



**BOARD OF DIRECTORS
FINANCE COMMITTEE MEETING AGENDA
TUESDAY, APRIL 05, 2022**

1:00 PM – CLOSED SESSION - MAIN CONFERENCE ROOM

1:30 PM – OPEN SESSION- MAIN CONFERENCE ROOM

41870 GARSTIN DRIVE, BIG BEAR LAKE, CA 92315

Copies of staff reports or other written documentation relating to each item of business referred to on this agenda are on file in the Chief Executive Officer's Office and are available for public inspection or purchase at 10 cents per page with advance written notice. In compliance with the Americans with Disabilities Act and Government Code Section 54954.2, if you need special assistance to participate in a District meeting or other services offered by the District, please contact Administration (909) 878-8214. Notification at least 48 hours prior to the meeting or time when services are needed will assist the District staff in assuring that reasonable arrangements can be made to provide accessibility to the meeting or service. **DOCUMENTS RELATED TO OPEN SESSION AGENDAS (SB 343)** Any public record, relating to an open session agenda item, that is distributed within 72 hours prior to the meeting is available for public inspection at the public counter located in the Administration Office, located at 41870 Garstin Drive, Big Bear Lake, CA 92315. For questions regarding any agenda item, contact Administration at (909) 878-8214.

OPEN SESSION

- 1. CALL TO ORDER** **Steve Baker, Treasurer**
- 2. ROLL CALL** **Shelly Egerer, Executive Assistant**
- 3. ADOPTION OF AGENDA***
- 4. PUBLIC FORUM FOR CLOSED SESSION**
Opportunity for members of the public to address the Committee on Closed Session items.
(Government Code Section 54954.3, there will be a three (3) minute limit per speaker. Any report or data required at this time must be requested in writing, signed and turned in to Administration. Please state your name and city of residence.)
- 5. ADJOURN TO CLOSED SESSION***

CLOSED SESSION

- 1. REAL PROPERTY NEGOTIATIONS: *Government Code Section 54956.8/TRADE SECRETS: *Pursuant to Health and Safety Code Section 32106 and Civil Code Section 34266.1**
(1) Property Acquisition/Lease/Tentative Improvement (Anticipated Disclosure 04/05/22)

OPEN SESSION

- 1. CALL TO ORDER** **Steve Baker, Treasurer**
- 2. RESULTS OF CLOSED SESSION*** **Steve Baker, Treasurer**
- 3. PUBLIC FORUM FOR OPEN SESSION**
Opportunity for members of the public to address the Committee on Open Session items.
(Government Code Section 54954.3, there will be a three (3) minute limit per speaker. Any report or data required at this time must be requested in writing, signed and turned in to Administration. Please state your name and city of residence.)

4. DIRECTORS COMMENTS

5. APPROVAL OF MINUTES*

A. March 01, 2022

6. OLD BUSINESS*

- None

7. NEW BUSINESS*

Evan Rayner, CEO

A. Discussion and Potential Recommendation to the Board of Directors the Following Expenditures:

- (1) Fire Panel Replacement
- (2) X-Ray Unit for Big Bear Urgent Care Inc.
- (3) X-Ray Unit funded by SHIP Grant
- (4) ED Modular System/Starc System

B. Discussion and Potential Recommendation to the Board of Directors Resolution #22-468
Determining, Certifying, and Directing Special Tax Levies Within The District (Measure F)

8. PRESENTATION AND REVIEW OF FINANCIAL STATEMENTS*

A. February 2022

B. CFO Report

9. ADJOURNMENT*

*** Denotes Actions Items**

**BEAR VALLEY COMMUNITY HEALTHCARE DISTRICT
BOARD OF DIRECTORS
FINANCE COMMITTEE MEETING MINUTES
41870 GARSTIN DR., BIG BEAR LAKE, CA 92315
MARCH 01, 2022**

MEMBERS Steven Baker, Treasurer Evan Rayner, CEO
PRESENT: Jack Briner, 2nd Vice President Shelly Egerer, Executive Assistant
Garth Hamblin, CFO

STAFF: Kerri Jex Mary Norman

OTHER: Woody White w/QHR

**COMMUNITY
MEMBERS:** None

ABSENT: None

OPEN SESSION

1. CALL TO ORDER:

Board Member Baker called the meeting to order at 1:00 p.m.

2. ROLL CALL:

Steven Baker and Jack Briner were present. Also present were Evan Rayner, CEO, Garth Hamblin, CFO and Shelly Egerer, Executive Assistant.

3. ADOPTION OF AGENDA:

Board Member Briner motioned to adopt the March 01, 2022 Finance Committee Meeting Agenda as presented. Second by Board Member Baker to adopt the March 01, 2022 Finance Committee Meeting Agenda as presented. Board Member Baker called for a vote. A vote in favor of the motion was unanimously approved.

- Board Member Baker - yes
- Board Member Briner- yes

CLOSED SESSION

1. PUBLIC FORUM FOR CLOSED SESSION:

Board Member Baker opened the Hearing Section for Public Comment on Closed Session items at 1:02 p.m. Hearing no request to address the Finance Committee, Board Member Baker closed the Hearing Section at 1:02 p.m.

2. ADJOURN TO CLOSED SESSION:

Board Member Baker motioned to adjourn to Closed Session at 1:02 p.m. Second by Board Member Briner to adjourn to Closed Session at 1:02 p.m. Board Member Baker called for a vote. A vote in favor of the motion was unanimously approved.

- Board Member Baker - yes
- Board Member Briner- yes

OPEN SESSION

1. CALL TO ORDER:

Board Member Baker called the meeting to order at 1:36 p.m.

2. RESULTS OF CLOSED SESSION:

Board Member Baker stated there was no reportable action from Closed Session.

3. PUBLIC FORUM FOR OPEN SESSION:

Board Member Baker opened the Hearing Section for Public Comment on Open Session items at 1:36 p.m. Hearing no request to address the Finance Committee, Board Member Baker closed the Hearing Section at 1:36 p.m.

4. DIRECTOR'S COMMENTS:

- None

5. APPROVAL OF MINUTES:

A. February 01, 2022

Board Member Briner motioned to approve the February 01, 2022 minutes as presented. Second by Board Member Baker to approve the February 01, 2022 minutes as presented. Board Member Baker called for a vote. A vote in favor of the motion was unanimously approved.

- Board Member Baker - yes
- Board Member Briner- yes

6. OLD BUSINESS:

- None

7. NEW BUSINESS*

A. Discussion and Potential Recommendation to the Board of Directors the Following Service Agreements:

- (1) AB Staffing Agreement
- (2) Radius Staffing Agreement
- (3) MedPro Service Agreement
- (4) Brent Beard, MD SNF Medical Director Service Agreement

Board Member Briner motioned to provide a positive recommendation to the Board of Directors of agreements one through four as presented. Second by Board Member Baker to provide a positive recommendation to the Board of Directors of agreements one through four as presented. Board Member Baker called for a vote. A vote in favor of the motion was unanimously approved.

- Board Member Baker - yes
- Board Member Briner- yes

8. PRESENTATION AND REVIEW OF FINANCIAL STATEMENTS*

A. January 2022 Finances:

- Mr. Hamblin reported the following information:
 - Total revenue was under budget
 - Clinic visits down

- ER was high
- Expenses are over budget but trending down
- SNF revenue is high
- 440 days cash on hand
 - Purchased UC and housing

B. CFO Report:

- Mr. Hamblin reported the following:
 - **American Rescue Plan (ARP) SHIP:**
 - Applied for a \$258,000 grant
 - Install temporary barriers
 - Wage & benefit expense for screeners
 - Portable x-ray unit
 - **FY 2023 Budget Preparation Schedule:**
 - Provided budget schedule
 - Working on capital equipment request
 - **Urgent Care Summary:**
 - Employees at the UC are employees of the district but charged to the correct cost center
 - January had a surplus for the month
 - **Check register has been provided for the month of January 2022**
 - UC expenses are being charged to a separate charge center
 - We are tracking all expenses
 - District credit card is monitored by Administration
 - We do have an Amazon account with our purchasing department
 - Follow up on the cost to First Foundation Bank and Tasty Food Products

Board Member Briner motioned to approve the January 2022 Finance Report and CFO Report as presented. Second by Board Member Baker to approve the January 2022 Finance Report and CFO Report as presented. Board Member Baker called for a vote. A vote in favor of the motion was unanimously approved.

- Board Member Baker - yes
- Board Member Briner- yes

9. ADJOURNMENT*

Board Member Baker motioned to adjourn the meeting at 2:08 p.m. Second by Board Member Briner to adjourn the meeting. Board Member Baker called for a vote. A vote in favor of the motion was unanimously approved.

- Board Member Baker - yes
- Board Member Briner- yes



Recommendation for Action

Date: 29 March 2022
To: Board of Directors
From: Garth M Hamblin, CFO
Re: **Fire Panel Replacement**

Recommended Action

Approve expenditure of up to \$100,000 for replacement of Fire Panel.

Background

Facilities has identified the need to replace our current Fire Panel as our existing panel is failing and is no longer supported and parts are hard to find. Cost estimates range from \$60,000 to \$100,000. We are getting quotes to evaluate the work to be done and compare prices. We feel we will need to move quickly with this repair / replacement once we know the cost.



Recommendation for Action



Date: 29 March 2022
To: Board of Directors
From: Garth M Hamblin, CFO
Re: **Purchase of X-Ray Unit for Big Bear Urgent Care**

Recommended Action

Approve expenditure of \$29,869.33 (\$35,506.48 deposit was previously paid) for total of \$65,375.81 for Medlink Medical 40kw 400M FMT Classic Radiographic System for Big Bear Urgent Care.

Background

We have previously approved X-Ray equipment for Urgent Care. We would like to move forward with replacement of the equipment in the urgent care we purchased. Total of unit is \$65,375.81. We have \$29,869.33 remaining to be paid.



Mailing address: 10808 Foothill Blvd Ste 160-314 • Rancho Cucamonga, CA 91730

Office location: 9637 Arrow Route Ste D • Rancho Cucamonga, CA 91730

909-527-4062 • 800-995-1955 • fax 909-527-4072

trirad@verizon.net

November 10, 2021

Bear Valley Community Healthcare District
Attn: Angela Rodriguez, Directory of Medical Imaging Services
41870 Garstin Dr., PO Box 1649
Big Bear, CA 92315
Phone 909-878-8226, Fax 909-878-8280
angela.rodriguez@bvchd.com

Dear Angela,

Tri-Rad, Inc. is pleased to submit the following quotation for your review. Quote to include products and services described at the stated prices and terms. This quote is for a Medlink Medical 40kW 400M FMT Classic Radiographic System.

Medlink Medical 40kW 400M FMT Classic System

AMRAD® Medical 400M High Frequency Generator

- Up to 400 kHz, 40 kW High Frequency (HF) generator
- Anatomical Programming
- kVp range: 40-125/150, optional
- mA stations: 10-500
- mAs range: 0.1-500 mAs
- Pedestal Mount and Handswitch
- Operates from 1-phase, 208-230V or 3-phase 208-230 or 400-480V electric service

AEC logic for HF generators

Two (2) three field solid-state ion chambers for AEC

S211 Elevator / Four-Way Float-Top Table

- 84 in. x 30 in. flat, seamless table top
- Variable table height, 23 in. to 35 in.
- +/- 5 in. transverse travel
- 32 in. longitudinal travel
- Foot treadle operation of table top and height movements
- Grid Cabinet with electric lock
- Grid: 10:1 ratio, 103 LPI
- Heavy-duty Deluxe cassette tray 06338
- Operates on 120VAC
- 400 lb. rated patient load

J700 Floor Mount Tubestand

- 10 ft. rails
- Rotational base, 360° with 90° detents
- Transverse tubearm with 8.5 in. travel
- Angulation dial, operator handgrips and electric locks
- Platform Tubemount

S109 Wallstand Package

- Counterbalanced column, floor-to-wall mounted
- Grid Cabinet, 17 in. x 17 in.
- Grid: 10:1 ratio, 103 LPI
- Heavy-Duty Deluxe cassette tray 06338
- Electric locks

X-ray Tube

- X-ray tube: 0.6 -1.5 mm focal spots, 200,000 heat units

Cables

- 25 ft. High Voltage cables, 150 kVp

Collimator

07385 Collimator Ralco 221

- Certified 150 kVp manual collimator with swivel mount
- LED light field and tape measure
- Transverse laser alignment to receptor tray

Price

Product	Medlink Medical 40kW 400M FMT Classic System	\$58,075.00
Removal	removal and disposal of existing room	\$1,400.00
Tax	7.75% on product	\$4,500.81
Shipping	Estimated shipping	\$1,400.00
Total		\$65,375.81
Deposit	Deposit received 7/22/2020 from previous quote	- \$35,506.48
Balance due upon installation	Balance that would be due if this product is selected.	29,869.33

Tri-Rad Inc. is not responsible for any room preparation, e.g. electrical, radiation shielding.

Quoted price includes:

- Installation and calibration of new system and instruction in use.
- Warranty:
 - Equipment, e.g. tubestand, table, wallunit – 5 years, parts
 - Generator – 3 years, parts
 - X-ray tube – 3 years, pro-rated
 - Labor – 1 year

Terms of sale:

Balance due upon installation.

All equipment on this quote is brand new

Price and terms effective for 30 days

Tri Rad, Inc. shall maintain public liability insurance in an amount of not less than one million dollars.
Certificate of insurance available upon request.

Accepted By:

Submitted By:

Authorized Representative

Paul Hood

Paul Hood, Tri-Rad, Inc. Representative



Recommendation for Action

Date: 29 March 2022
To: Board of Directors
From: Garth M Hamblin, CFO
Re: **Purchase Portable X-Ray Unit - funded by
American Rescue Plan (ARP) SHIP Grant**

Recommended Action

Approve expenditure of \$60,000 for fully rebuilt GE AMX 4+ Portable X-Ray Machine with DR.

Background

We have previously reported and discussed our application for American Rescue Plan (ARP) SHIP Grant. Part of that application included purchase of a portable x-ray unit to limit patient movement throughout the facility. The Grant has been approved. We would like approval to move forward with the purchase.



Mailing address: 10808 Foothill Blvd Ste 160-314 • Rancho Cucamonga, CA 91730

Office location: 9637 Arrow Route Ste D • Rancho Cucamonga, CA 91730

909-527-4062 • 800-995-1955 • fax 909-527-4072

trirad@verizon.net

January 26, 2022

Bear Valley Community Healthcare District
Attn: Angela Rodriguez, Directory of Medical Imaging Services
41870 Garstin Dr., PO Box 1649
Big Bear, CA 92315
Phone 909-878-8226, Fax 909-878-8280
angela.rodriguez@bvchd.com

Dear Angela,

Tri-Rad, Inc. is pleased to submit the following quotation for your review. Quote to include products and services described at the stated prices and terms. **This quote is for a fully rebuilt GE AMX 4+ portable x-ray machine with DR (digital radiography) for Bear Valley Community Hospital.**

FULLY REBUILT GE AMX 4+ PORTABLE

Unit rebuilt under the following guidelines to OEM specifications

- A complete overhaul of mechanical and electrical components
- Structural reinforcements
- All work and broken parts replaced with OEM parts
- Verification/installation of all current upgrades and FMI's (pertaining to the model AMX4 Plus)), including:
 - Collimator – rebuilt with OEM parts
 - New cables, guards, faceplate, crosshair window, bulb, knob, dials, SID tape
 - Tube – parts replaced with new OEM
 - Rotor cable, decals
 - Collimator alignment performed
 - Yoke – Détente bearings
 - Horizontal Arm – rebuilt with OEM parts
 - New lock, brake, brake cable, upgraded latch assembly
 - Column – rebuilt with OEM parts
 - New style column shell with $\pm 270^\circ$ Rotation
 - New carriage, cables, safety cable, upper break, lower break, détente assembly

- Safety cable tension set to OEM factory specs
- New 4 Plus HV cables, HV clamps, inner & outer wear strips
- Reinforced top cover, labels, key switch
- Front panel, side panels, decals, wear strips, wear strip rubbers
- New style drawer, mat with inside covers replaced
- New handswitch with new cable & hanger complete with remote field light option
- New style drive handle assembly
- Kickplate, wear strips and rubber
- Complete base assembly with drive motors, drive wheels drive wheel mounts, spring loaded casters, electro-static discharge cables, corner pads, wear strips, new switches in bumper
- Electronics package removed, disassembled and all boards replaced with current revisions to include: CPU, Fil KV, 1Khz, Rotor, Charger and drive boards
 - New style wiring harness, latch upgrade, new style CPU cabling with choke
 - Cord reel with hospital grade plug with noise filter to prevent spikes during charge cycle
 - Six (6) ESD (Electro-Static Discharge) devices throughout electronics package
- New maintenance-free, rechargeable lead/acid batteries with interface kit and terminal block
- Complete system calibration in full compliance with BRH standards
- Complete cosmetic repairs & refinishing with OEM paint
- Complete service documentation

G.E. AMX 4 PLUS TECHNICAL SPECIFICATIONS

System design and transport

- Overall dimension
 - Footprint (L X W X H) (mm 1148 x 639 x 1930 (tube in park position))
- Overall weight (kg) 499
- Power drive motor driven
- Speed of movement for powered
 - Drive (km-hr -1)
 - 4.8 (maximum speed)
 - 2.4 (arm out of transport position)
 - Dead man type drive handle, positive tube lock for
 - Transport, front safety bumper
- Will turn on own axis
- Maximum step height that can be negotiated (mm) 10
- Maximum ramp gradient that can be negotiated 5°
- Storage facilities storage bin for cassettes (up to 10) 14" x 17"

X-RAY TUBE SUPPORT

- Rotating column ($\pm 270^\circ$) with counterbalanced extending horizontal arm
- Maximum / minimum focal spot height (mm) 2012 / 620
- Maximum horizontal extension (mm) 1076
- Electromagnetic locks with single control (on collimator assembly) for main support movements, manual or friction for other movements

X-RAY TUBE ASSEMBLY

- Focal spot sizes 0.75 mm
- Type of collimator standard, manually controlled light beam diaphragm, 2 pair of blades
- Total beam filtrations (mm Al equivalent) ≥ 2.5

X-RAY GENERATOR

- Generator type medium frequency, multi pulse (1 kHz), microprocessor controlled
- Main power supply, battery pack charged from standard 120VAC, 10 amp outlet
- Nominal output (kW) 12.5
- KV range 50 to 125
- MAS range:
 - 4 to 320 at 60 kV
 - 4 to 320 at 80 kV
 - 4 to 250 at 100 kV
- Touch panel controls and digital displays
- Manual collimator, manually controlled light beam diaphragm, 2 pair of blades
- Total beam filtration (mm Al equivalent) ≥ 2.5

New, VIVIX-S VW Series DR 1417VW Wireless CsI Panel [FXRD-3643VAW] with Acquisition Workstation/Monitor

#HVE001-WKS VIVIX-S VW Series DR 1417VW Wireless CsI Panel [FXRD-3643VAW] with Acquisition Workstation/Monitor Scintillator Amorphous Silicon: Cesium Iodide (CsI: TI)

VIVIX-S VW Series DR 1417VW Wireless CsI Flat Panel Detector System includes: 1417VW Series Wireless CsI Flat Panel Detector [FXRD-3643VAW]; C-type Charging Cable; Two (2) Embedded Batteries; Access Point (AP); Acquisition Workstation/Monitor, VXvue with PureImpact™ Digital Radiography Acquisition Viewer Software.

Five (5) Year Panel Manufacturer Warranty and One (1) Year Remote Technical Support.
Batteries include a one (1) year warranty.

AMX 4 Portable DR Acquisition Workstation, hardware and mounting assembly included.

Acquisition Hardware: Three (3) Year warranty included on the portable workstation.

Intel Core i3 Processor 6100 CPU (3.7GHz)

1 TB Hard Drive

Imaging Acquisition software

Professional hospital grade touch screen resolution monitor: 1920 x 1080, full HD Ratio 1000:1

Concurrent Viewers: Ten (10) Local Area Network (LAN) Viewers, DICOM Send - Multi Destination, DICOM Print, DICOM MWL Modality Worklist, User Friendly Touch Screen GUI, Measurement Tools, including: Auto and Manual Selection, Archive, Image Preview, Magnify, Zoom, Marker.

Three (3) Year Acquisition Workstation and Monitor Warranty.

Note: includes loyal customer pricing

PACKAGE PRICE	GE AMX4+ rebuild portable x-ray machine and new DR	\$ 53,833.00
Sales Tax	7.75%	\$ 4,172.06
Shipping		\$ 1,700.00
	TOTAL	\$ 59,705.06

Includes

Installation and calibration of system

Instruction in use

1-year labor

1-year parts, GE AMX+ portable (includes x-ray tube)

Warranty as described in product details for digital

Terms of sale

50% with order

50% with first use

Price and terms effective for 60 days

Tri Rad, Inc. shall maintain public liability insurance in an amount of not less than one million dollars.
Certificate of insurance available upon request.

Accepted By:

Submitted By:

Authorized Representative

Paul Hood

Paul Hood, Tri-Rad, Inc. Representative

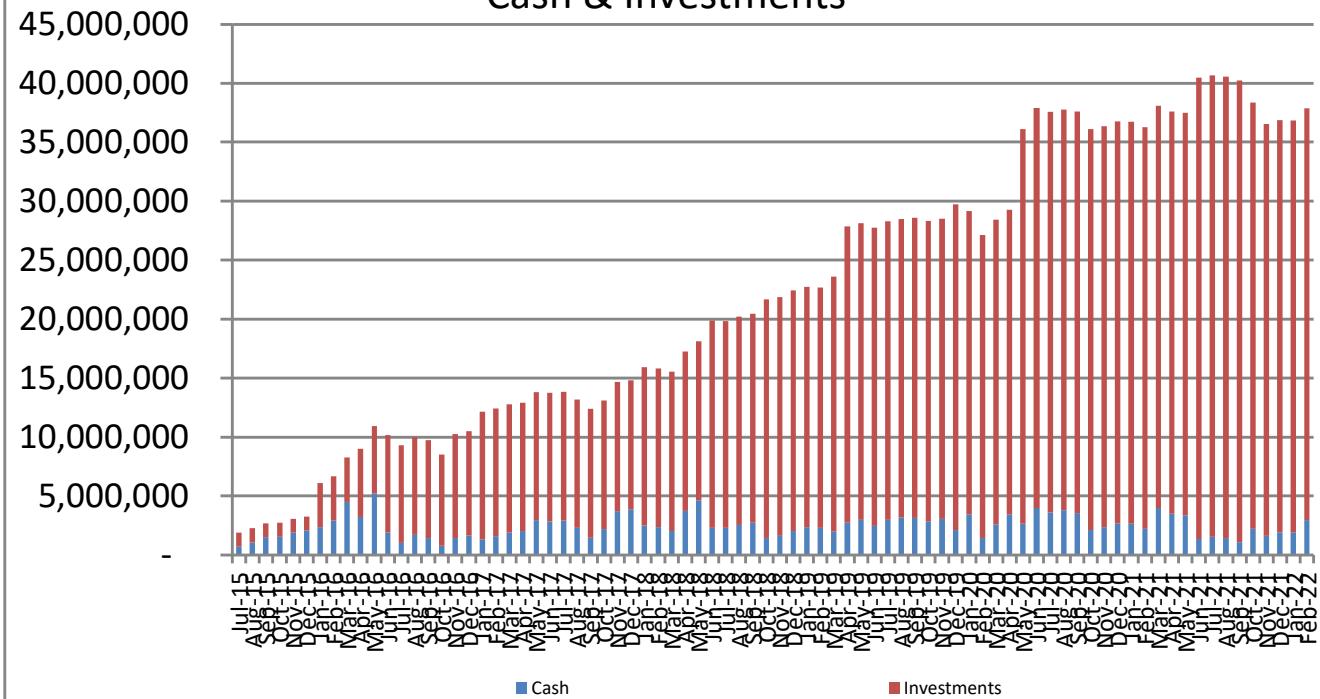


Finance Report
February 2022 Results

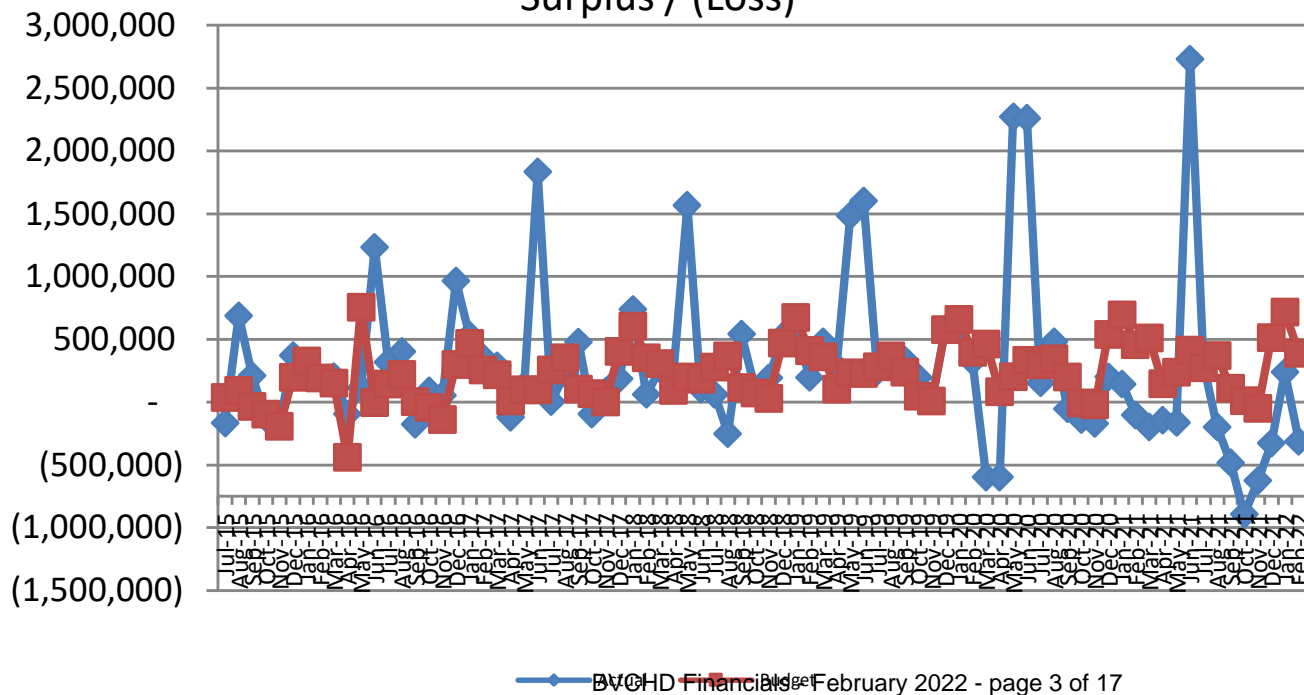
Summary for February 2022

- Cash on hand \$ 2,949,037
Investments \$ 34,930,232
- Days Cash on hand, including investments with LAIF – 441
- Loss of \$311,317 lower than budgeted surplus by \$701,705
- Total Patient Revenue was 2.6% higher than Budget for the month
- Net Patient Revenue was 2.4% more than budget
- Total Expenses were 30.4% more than budget

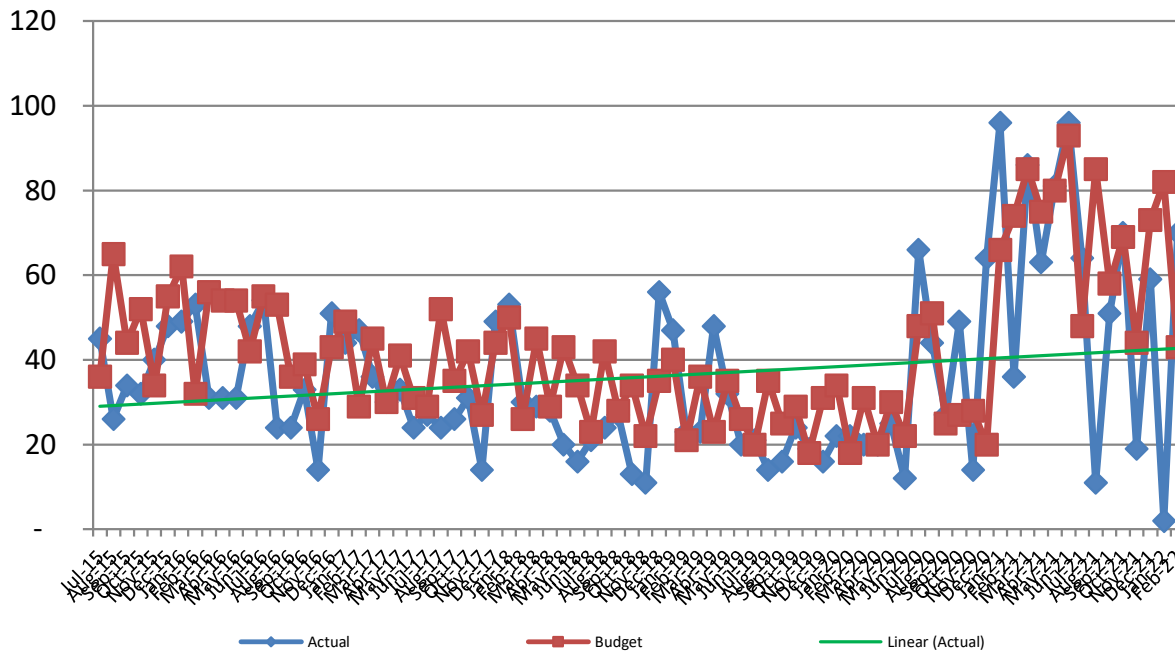
Cash & Investments



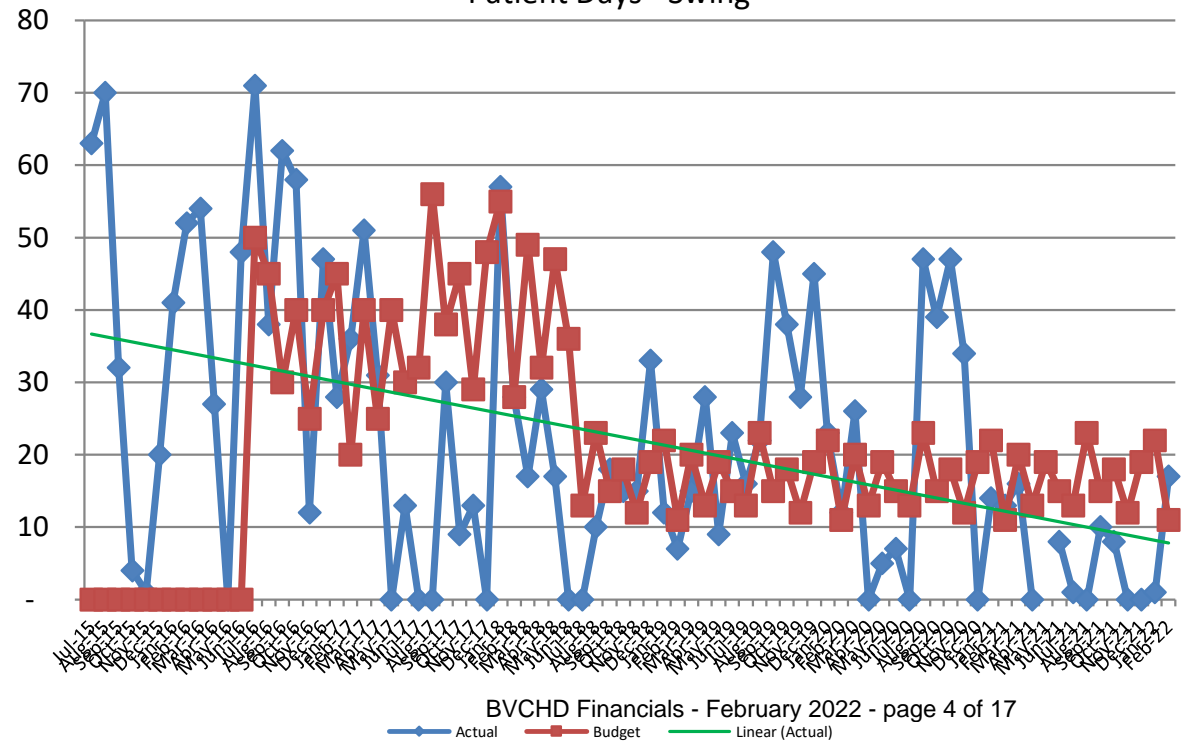
Surplus / (Loss)



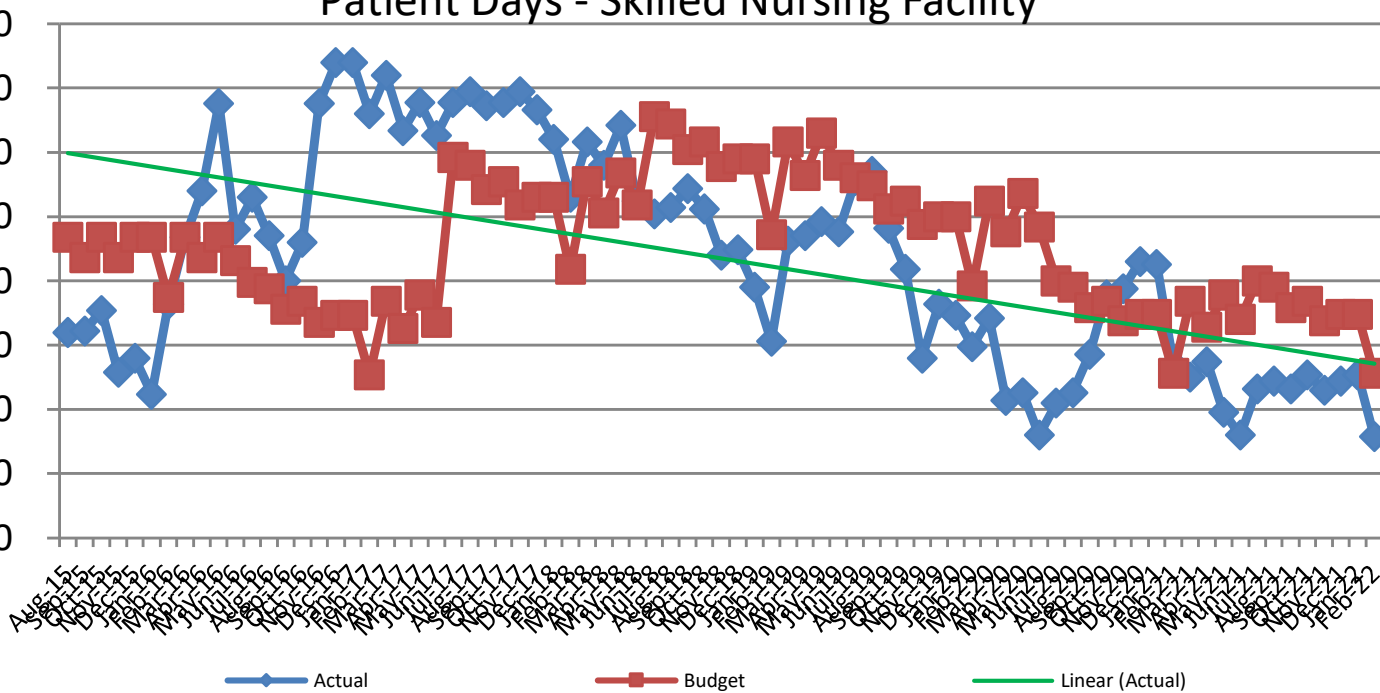
Patient Days - Acute



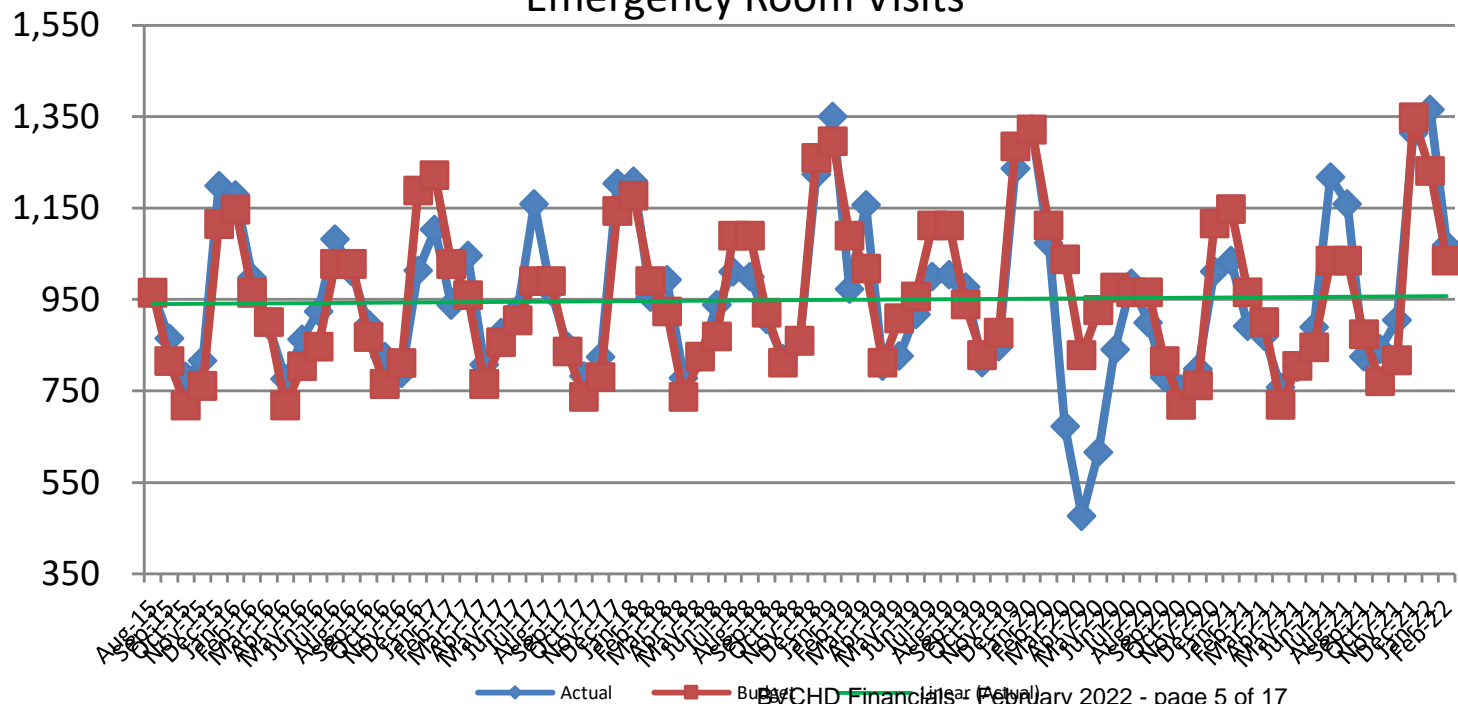
Patient Days - Swing



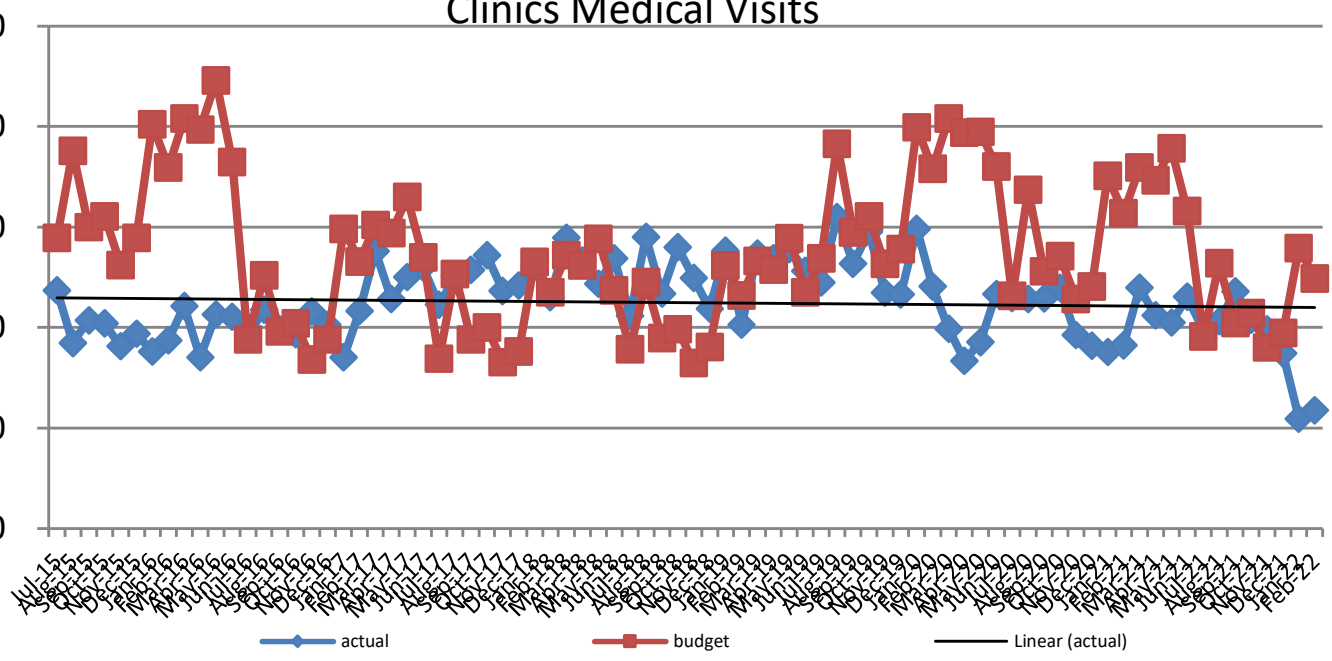
Patient Days - Skilled Nursing Facility



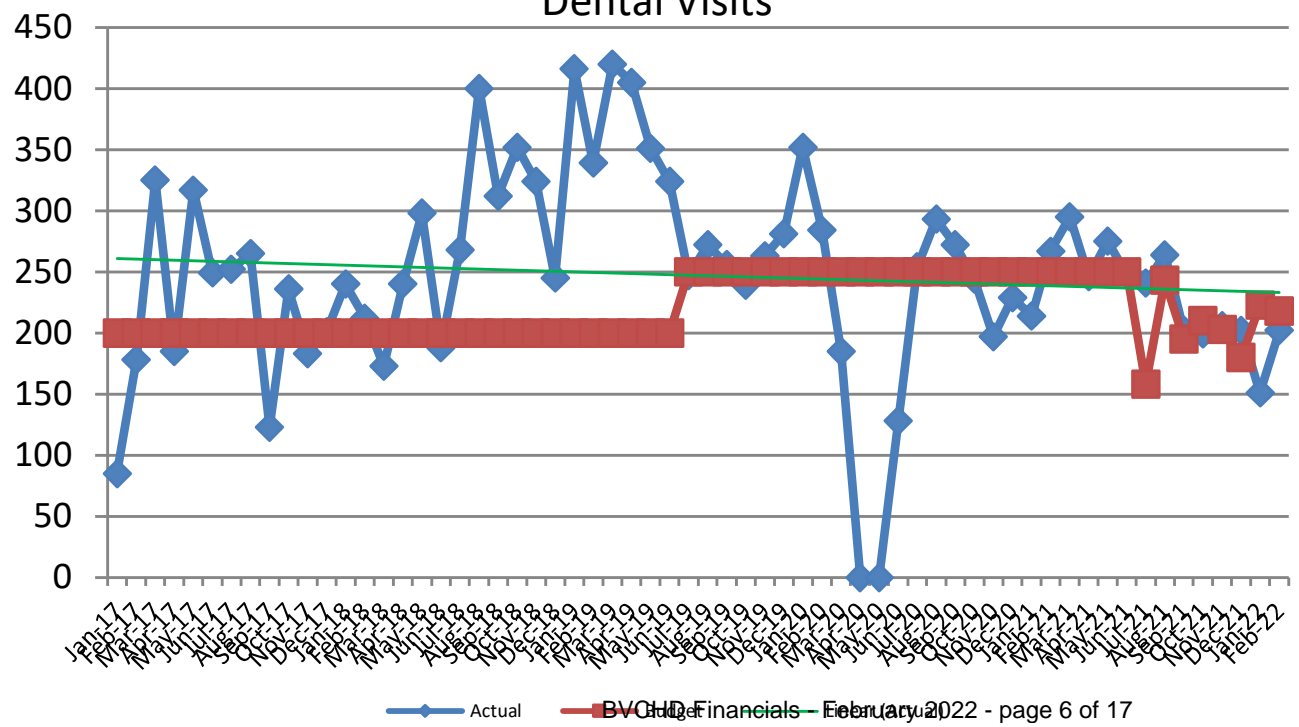
Emergency Room Visits



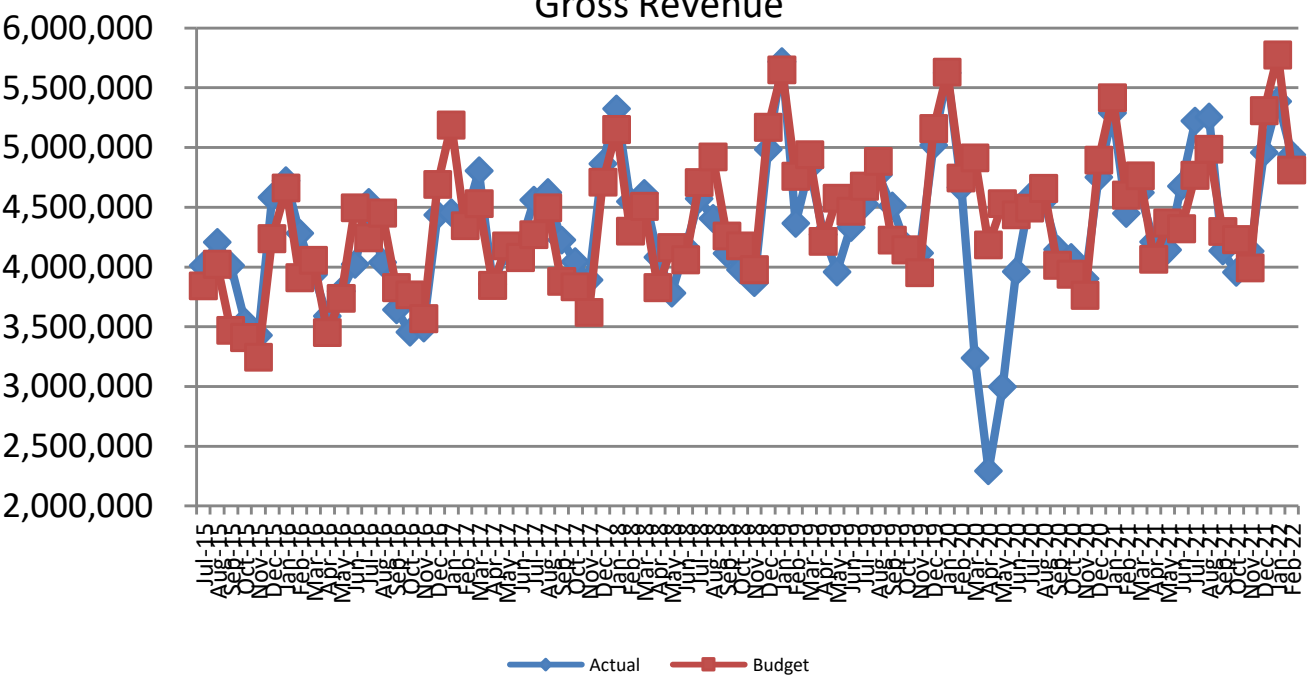
Clinics Medical Visits



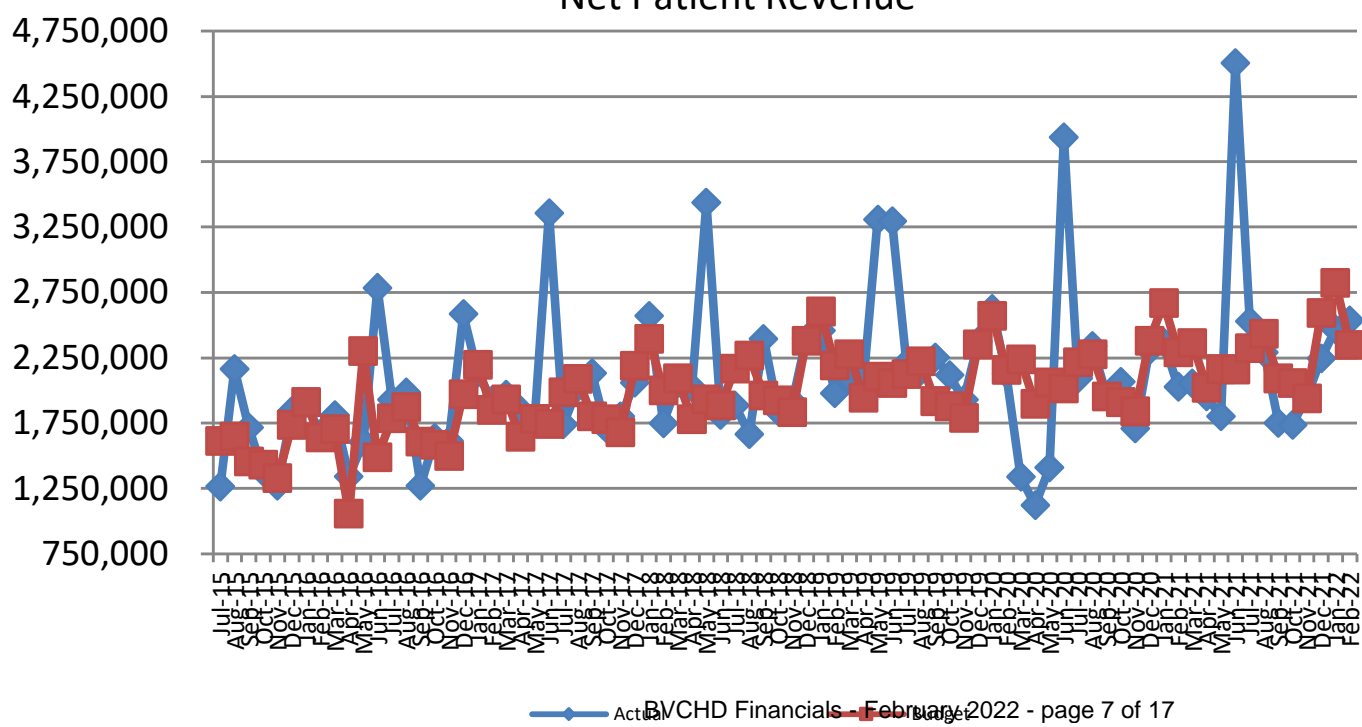
Dental Visits



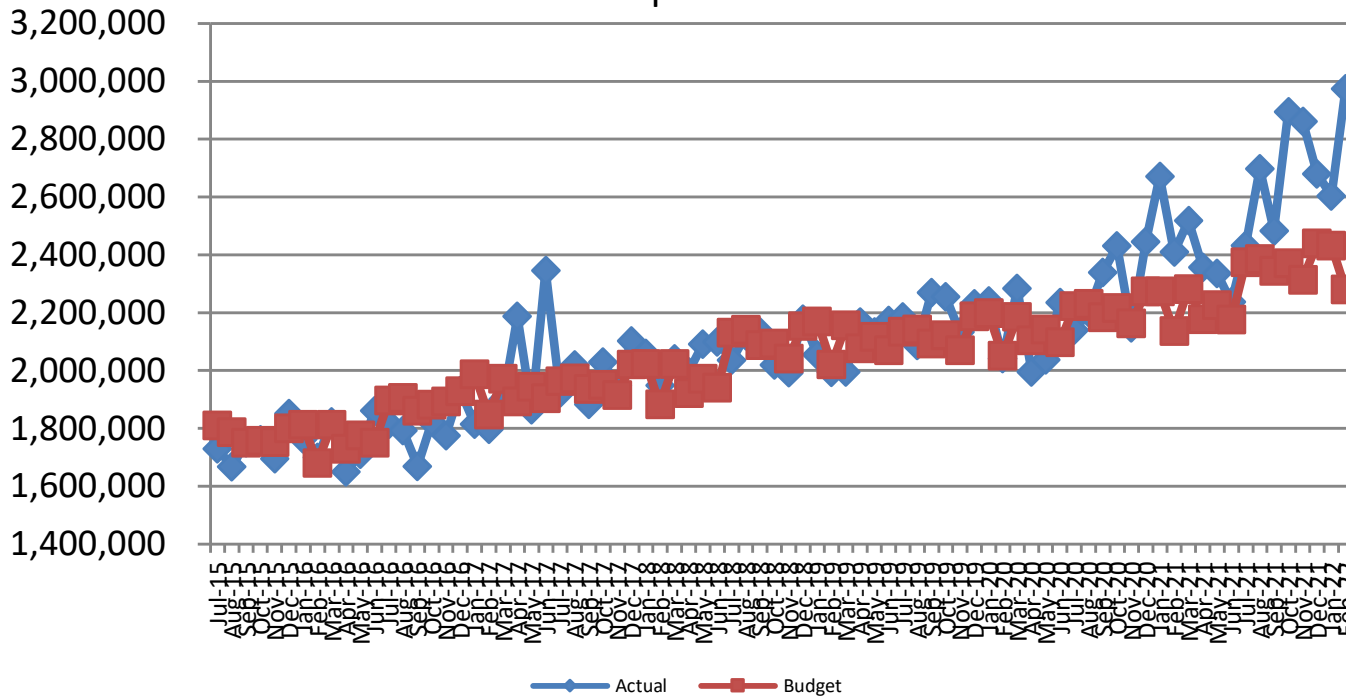
Gross Revenue



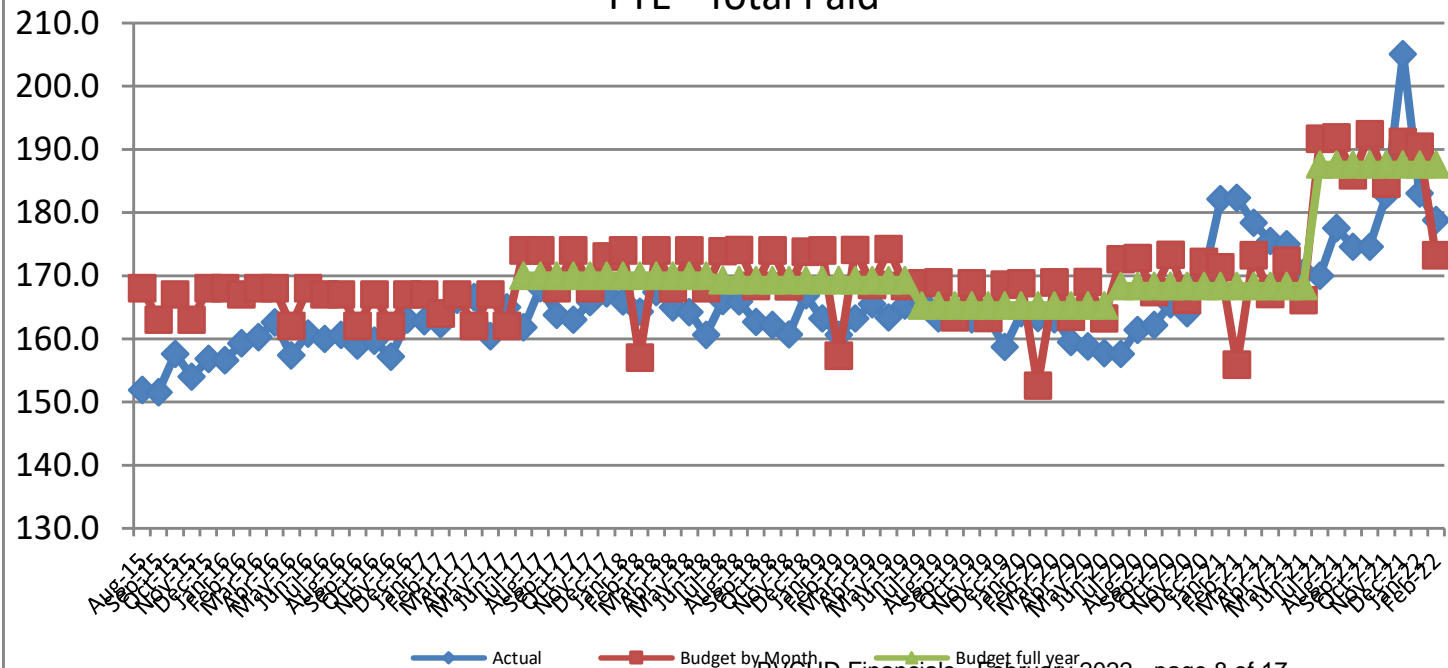
Net Patient Revenue



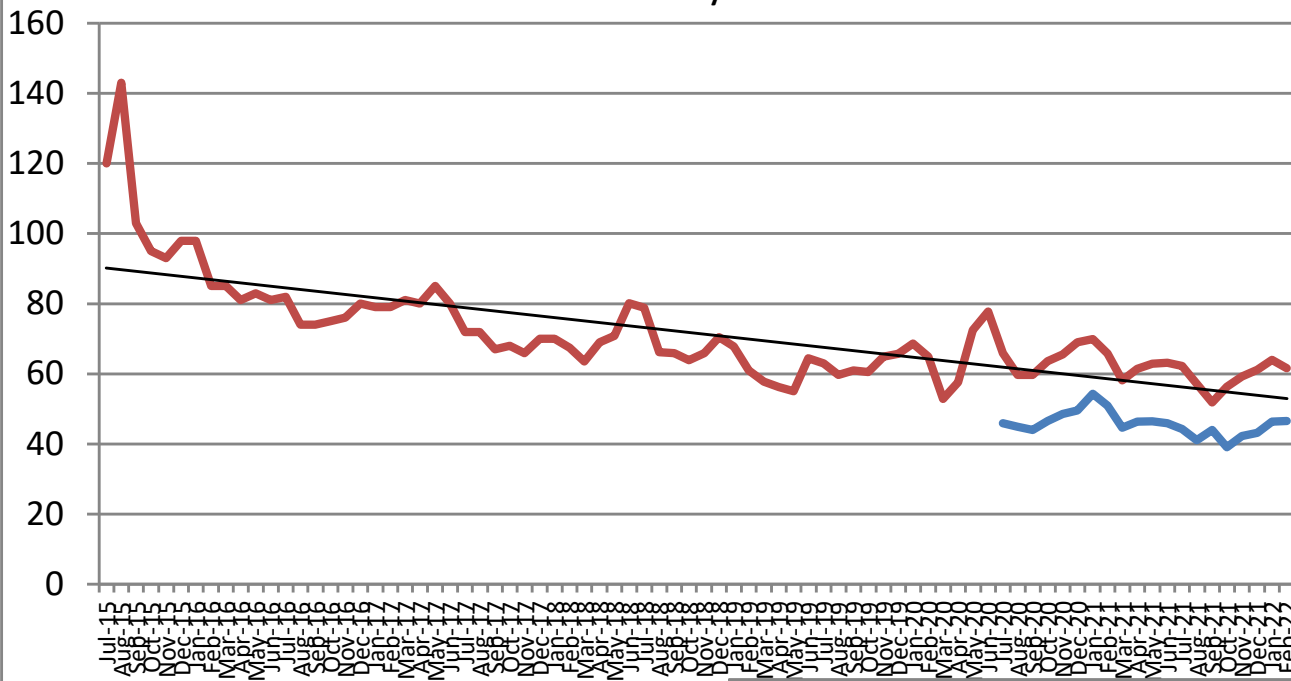
Total Expenses



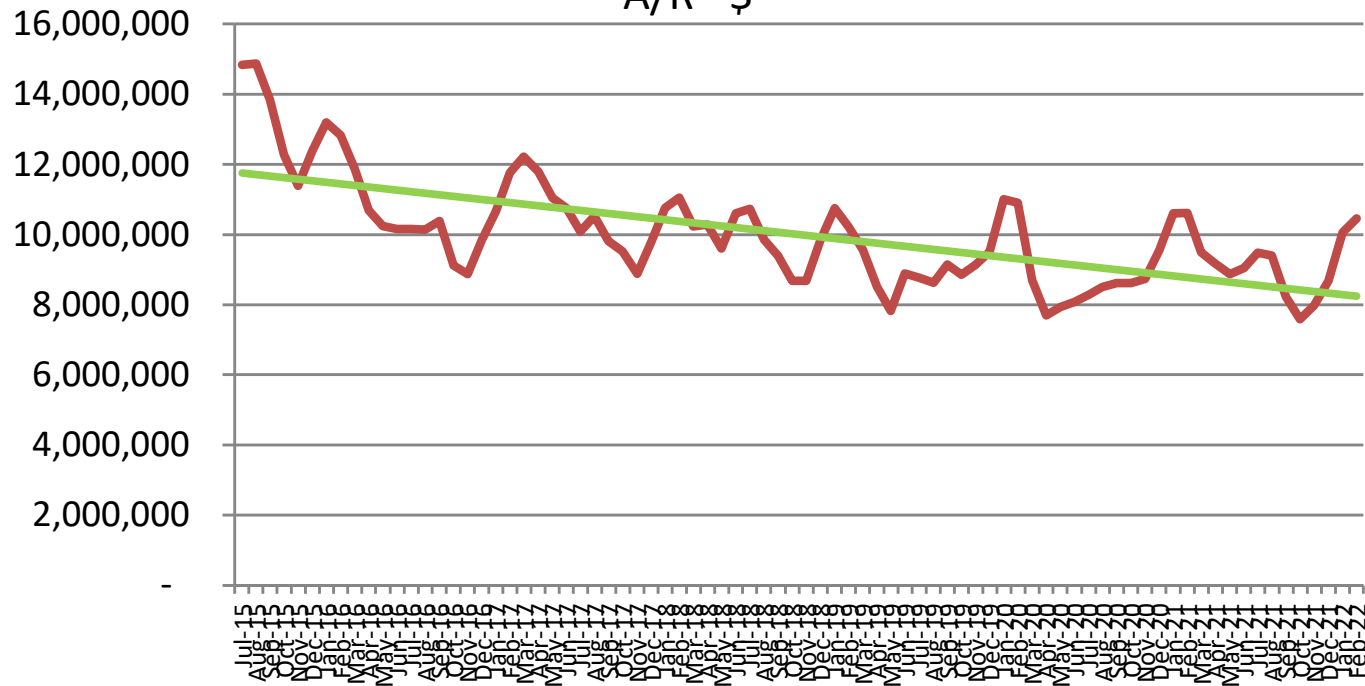
FTE - Total Paid



Accounts Receivable Days - Gross and Net



A/R - \$





February 2022 Financial Results

For the month . . .

Total Patient Revenue for February 2022 was \$4,938,779. This was 2.6% or \$126,314 more than budget. Inpatient revenue was 89.2% higher than budget for the month. Outpatient revenue was 31.6% lower than budget. Clinic revenue was 31.7% less than budget. ER revenue was 9.7% more than budget. Skilled Nursing Facility revenue was 31.1% more than budget.

Total Revenue deductions of \$2,535,343 were 2.8% more than budget for the month.

Total Operating Revenue was 0.2% lower than our budgeted amount for the month.

Total Expenses of \$2,973,864 were 30.4% or \$697,179 more than budget. Salaries were 25.8% higher than budget. We had \$110,593 in Registry expense. Supply expense was 88.9% over budget for the month – Lab was most of the difference. Purchased Services were 29.1% more than budget. Insurance expense continues over budget in Property and D & O insurance. Other Expense as over budget with settlement of a legal issue.

Our Operating Cash and Investments total \$37,879,269 as of the end of month. Total days cash on hand as of the end of February 2022 were 441

Key Statistics

Acute patient days were 70 for the month, 63% more than budget. We had 17 Swing Patient days for the month. Skilled Nursing Facility days of 329 were 13% under budget – our Average Daily Census was 11.75. ER Visits of 1,068 were 3.2% higher than budget. Clinics Medical visits were 37.6% less than budget. Dental visits were 202 for month.

FTE (Full Time Equivalents) for the month were 178.8.

Year-to-Date (through our first 3 months)

Total Patient Revenue – 0.5% less than budget

Total Revenue Deductions – 5.4% more than budget

Total Operating Revenue – 9.2% under budget

Total Expenses – 14.2% more than budget

Bear Valley Community Healthcare District
Financial Statements February 28, 2022

Financial Highlights—Hospital
STATEMENT OF OPERATIONS

	A	B	C	D	E	F	G	H	I	J
	Current Month					Year-to-Date				
	FY 20/21	FY 21/22		VARIANCE		FY 20/21	FY 21/22		VARIANCE	
	Actual	Actual	Budget	Amount	%	Actual	Actual	Budget	Amount	%
1 Total patient revenue	4,446,951	4,938,779	4,812,465	126,314	2.6%	35,757,346	37,986,615	38,172,025	(185,410)	-0.5%
2 Total revenue deductions	2,418,589	2,535,343	2,465,608	69,735	2.8%	18,887,661	20,608,973	19,559,437	1,049,536	5.4%
3 % Deductions	54%	51%	51%			53%	54%	51%		
4 Net Patient Revenue	2,028,362	2,403,436	2,346,857	56,579	2.4%	16,869,685	17,377,642	18,612,588	(1,234,946)	-6.6%
5 % Net to Gross	46%	49%	49%			47%	46%	49%		
6 Other Revenue	81,009	53,119	113,962	(60,843)	-53.4%	465,027	353,607	917,498	(563,891)	-61.5%
7 Total Operating Revenue	2,109,371	2,456,555	2,460,819	(4,264)	-0.2%	17,334,712	17,731,249	19,530,086	(1,798,837)	-9.2%
8 Total Expenses	2,409,313	2,973,864	2,280,685	693,179	30.4%	18,781,025	21,629,126	18,940,715	2,688,411	14.2%
9 % Expenses	54%	60%	47%			53%	57%	50%		
10 Surplus (Loss) from Operations	(299,942)	(517,309)	180,134	(697,443)	387.2%	(1,446,313)	(3,897,877)	589,371	(4,487,248)	761.4%
11 % Operating margin	-7%	-10%	4%			-4%	-10%	2%		
12 Total Non-operating	198,115	205,992	210,254	(4,262)	-2.0%	1,970,055	1,604,542	1,758,032	(153,490)	-8.7%
13 Surplus/(Loss)	(101,827)	(311,317)	390,388	(701,705)	179.7%	523,743	(2,293,335)	2,347,403	(4,640,738)	197.7%
14 % Total margin	-2%	-6%	8%			1%	-6%	6%		

BALANCE SHEET

	A	B	C	D	E
	February	February	January		
	FY 20/21	FY 21/22	FY 21/22	VARIANCE	
				Amount	%
15 Gross Accounts Receivables	10,613,399	10,468,256	10,067,816	400,440	4.0%
16 Net Accounts Receivables	3,587,506	3,326,025	3,128,616	197,409	6.3%
17 % Net AR to Gross AR	34%	32%	31%		
18 Days Gross AR	65.8	61.6	64.0	(2.4)	-3.8%
19 Cash Collections	1,847,048	1,806,943	1,798,958	7,985	0.4%
20 Settlements/IGT Transactions	25,533	1,690,301	733,096	957,204	130.6%
21 Stimulus Receipts	19,118	-	53,287	(53,287)	-100.0%
22 Investments	34,068,527	34,930,232	34,930,232	(0)	0.0%
23 Cash on hand	2,222,422	2,949,037	1,925,620	1,023,417	53.1%
24 Total Cash & Invest	36,290,949	37,879,269	36,855,852	1,023,417	2.8%
Days Cash & Invest	489	441	440	1	0.2%
Total Cash and Investments	36,290,949	37,879,269			
Increase Current Year vs. Prior Year		1,588,320			

Bear Valley Community Healthcare District
Financial Statements February 28, 2022

Statement of Operations

	A	B	C	D	E	F	G	H	I	J
	Current Month					Year-to-Date				
	FY 20/21	FY 21/22		VARIANCE		FY 20/21	FY 21/22		VARIANCE	
	Actual	Actual	Budget	Amount	%	Actual	Actual	Budget	Amount	%
Gross Patient Revenue										
1 Inpatient	190,620	257,006	135,810	121,196	89.2%	1,697,825	1,078,113	1,492,909	(414,796)	-27.8%
2 Outpatient	899,363	577,371	843,620	(266,249)	-31.6%	6,647,612	5,566,488	6,726,996	(1,160,508)	-17.3%
3 Clinic Revenue	293,223	228,215	334,041	(105,826)	-31.7%	2,461,002	2,245,115	2,583,242	(338,127)	-13.1%
4 Emergency Room	2,891,851	3,648,119	3,325,064	323,055	9.7%	23,478,191	27,413,276	25,859,415	1,553,861	6.0%
5 Skilled Nursing Facility	171,894	228,068	173,930	54,138	31.1%	1,472,717	1,683,623	1,509,463	174,160	11.5%
6 Total patient revenue	4,446,951	4,938,779	4,812,465	126,314	2.6%	35,757,346	37,986,615	38,172,025	(185,410)	-0.5%
Revenue Deductions										
7 Contractual Allow	2,085,989	2,560,405	2,171,451	388,954	17.9%	17,257,598	19,456,757	17,226,213	2,230,544	12.9%
8 Contractual Allow PY	(173,542)	(400,000)	-	(400,000)	#DIV/0!	(1,356,944)	(1,414,750)	-	(1,414,750)	#DIV/0!
9 Charity Care	13,627	40	20,662	(20,622)	-99.8%	136,756	109,701	163,887	(54,186)	-33.1%
10 Administrative	9,162	14,133	5,391	8,742	162.2%	32,099	128,096	42,763	85,333	199.5%
11 Policy Discount	16,334	22,912	16,594	6,318	38.1%	120,937	186,904	131,620	55,284	42.0%
12 Employee Discount	19,553	20,892	10,021	10,871	108.5%	70,626	128,379	79,482	48,897	61.5%
13 Bad Debts	333,629	259,484	241,489	17,995	7.5%	1,929,766	1,407,823	1,915,472	(507,649)	-26.5%
14 Denials	109,385	57,477	-	57,477	#DIV/0!	696,824	606,061	-	606,061	#DIV/0!
15 Total revenue deductions	2,418,589	2,535,343	2,465,608	69,735	2.8%	18,887,661	20,608,973	19,559,437	1,049,536	5.4%
16 Net Patient Revenue	2,028,362	2,403,436	2,346,857	56,579	2.4%	16,869,685	17,377,642	18,612,588	(1,234,946)	-6.6%
Total Revenue Deductions as a percent to Contractual Allowances as a percent to gross revenue WO PY and Other CA	40.2%	40.2%		40.2%		40.2%	447.4%	447.4%	0.0%	
	39.2%	39.2%		39.2%		39.2%	437.2%	437.2%	0.0%	
17 Other Revenue	81,009	53,119	113,962	(60,843)	-53.4%	465,027	353,607	917,498	(563,891)	-61.5%
18 Total Operating Revenue	2,109,371	2,456,555	2,460,819	(4,264)	-0.2%	17,334,712	17,731,249	19,530,086	(1,798,837)	-9.2%
Expenses										
19 Salaries	1,011,456	1,165,724	926,488	239,236	25.8%	8,099,866	9,000,466	8,025,944	974,522	12.1%
20 Employee Benefits	367,581	362,724	372,602	(9,878)	-2.7%	2,611,488	2,668,296	3,091,752	(423,456)	-13.7%
21 Registry	34,600	110,593	-	110,593	#DIV/0!	180,863	981,745	-	981,745	#DIV/0!
22 Salaries and Benefits	1,413,636	1,639,041	1,299,090	339,951	26.2%	10,892,217	12,650,508	11,117,696	1,532,812	13.8%
23 Professional fees	145,510	145,578	172,576	(26,998)	-15.6%	1,309,474	1,262,928	1,373,884	(110,956)	-8.1%
24 Supplies	238,374	274,744	145,465	129,279	88.9%	1,555,245	1,666,998	1,195,313	471,685	39.5%
25 Utilities	41,070	45,524	36,871	8,653	23.5%	283,795	343,131	294,565	48,566	16.5%
26 Repairs and Maintenance	42,847	48,928	52,548	(3,620)	-6.9%	388,365	350,056	425,970	(75,914)	-17.8%
27 Purchased Services	320,730	420,244	325,445	94,799	29.1%	2,726,047	3,202,842	2,532,504	670,338	26.5%
28 Insurance	38,863	80,680	43,214	37,466	86.7%	299,507	618,494	346,850	271,644	78.3%
29 Depreciation	91,295	96,309	96,931	(622)	-0.6%	730,360	744,021	778,604	(34,583)	-4.4%
30 Rental and Leases	18,371	19,368	27,103	(7,735)	-28.5%	144,674	158,780	216,824	(58,044)	-26.8%
32 Dues and Subscriptions	5,981	6,165	6,599	(434)	-6.6%	51,699	56,116	52,792	3,324	6.3%
33 Other Expense	52,636	197,282	74,843	122,439	163.6%	399,643	575,253	605,713	(30,460)	-5.0%
34 Total Expenses	2,409,313	2,973,864	2,280,685	693,179	30.4%	18,781,025	21,629,126	18,940,715	2,688,411	14.2%
35 Surplus (Loss) from Operations	(299,942)	(517,309)	180,134	(697,443)	387.2%	(1,446,313)	(3,897,877)	589,371	(4,487,248)	761.4%
Non-Operating Income										
37 Tax Revenue	204,167	204,163	204,167	(4)	0.0%	1,633,336	1,633,324	1,633,336	(12)	0.0%
38 Other non-operating	320	8,837	13,320	(4,483)	-33.7%	262,492	(14,852)	106,560	(121,412)	-113.9%
Interest Income	1,319	217	100	117	117.1%	134,227	47,650	76,800	(29,150)	-38.0%
Interest Expense	(7,691)	(7,225)	(7,333)	108	-1.5%	(60,000)	(61,580)	(58,664)	(2,916)	5.0%
IGT Expense	-	-	-	-	#DIV/0!	-	-	-	-	#DIV/0!
39 Total Non-operating	198,115	205,992	210,254	(4,262)	-2.0%	1,970,055	1,604,542	1,758,032	(153,490)	-8.7%
40 Surplus/(Loss)	(101,827)	(311,317)	390,388	(701,705)	179.7%	523,743	(2,293,335)	2,347,403	(4,640,738)	197.7%

**Bear Valley Community Healthcare District
Financial Statements**

Current Year Trending Statement of Operations

A Statement of Operations—CURRENT YEAR 2022

	1	2	3	4	5	6	7	8	9	10	11	12	
	July	Aug	Sept	Oct	Nov	Dec	Jan	Feb	Mar	Apr	May	June	YTD
Gross Patient Revenue													
1 Inpatient	205,183	68,218	158,880	137,136	60,476	170,795	20,420	257,006					1,078,113
2 Outpatient	711,151	1,107,243	748,528	714,979	646,865	561,835	498,516	577,371					5,566,488
3 Clinic	286,746	319,875	317,058	307,913	295,014	281,768	208,525	228,215					2,245,115
4 Emergency Room	3,855,619	3,551,235	2,705,755	2,582,787	2,926,079	3,737,527	4,406,156	3,648,119					27,413,276
5 Skilled Nursing Facility	162,677	208,828	205,420	211,653	203,217	208,788	254,972	228,068					1,683,623
6 Total patient revenue	5,221,376	5,255,400	4,135,641	3,954,468	4,131,650	4,960,713	5,388,589	4,938,779	-	-	-	-	37,986,615
Revenue Deductions	C/A	0.50	0.50	0.51	0.55	0.50	0.53	0.49	0.52	#DIV/0!	#DIV/0!	#DIV/0!	0.51
7 Contractual Allow	2,633,241	2,641,433	2,123,304	2,161,012	2,068,222	2,617,644	2,651,496	2,560,405					19,456,757
8 Contractual Allow PY	-	(166,414)	(150,000)	(161,900)	(239,980)	(150,000)	(146,456)	(400,000)					(1,414,750)
9 Charity Care	13,835	10,821	29,173	3,011	26,998	(1,094)	26,918	40					109,701
10 Administrative	13,068	65,243	2,149	470	22,039	3,086	7,909	14,133					128,096
11 Policy Discount	11,886	25,978	22,294	21,686	14,924	21,404	45,819	22,912					186,904
12 Employee Discount	3,477	8,688	21,685	14,258	27,122	18,715	13,541	20,892					128,379
13 Bad Debts	(20,228)	286,419	213,959	94,463	178,698	143,638	251,389	259,484					1,407,823
14 Denials	36,893	90,512	122,409	85,491	82,900	62,136	68,244	57,477					606,061
Total revenue deductions	2,692,172	2,962,680	2,384,974	2,218,491	2,180,924	2,715,529	2,918,860	2,535,343	-	-	-	-	20,608,973
16 Net Patient Revenue	2,529,203	2,292,719	1,750,667	1,735,978	1,950,726	2,245,184	2,469,729	2,403,436	-	-	-	-	17,377,642
net / tot pat rev	48.4%	43.6%	42.3%	43.9%	47.2%	45.3%	45.8%	48.7%	#DIV/0!	#DIV/0!	#DIV/0!	#DIV/0!	45.7%
17 Other Revenue	7,903	12,423	12,179	69,102	87,920	(14,843)	125,803	53,119					353,607
Total Operating Revenue	2,537,106	2,305,142	1,762,847	1,805,080	2,038,646	2,230,342	2,595,532	2,456,555	-	-	-	-	17,731,249
Expenses													
19 Salaries	1,031,745	1,186,235	1,128,310	1,030,308	1,180,530	1,149,239	1,128,376	1,165,724					9,000,466
20 Employee Benefits	328,024	322,710	327,131	341,164	324,130	316,185	346,228	362,724					2,668,296
21 Registry	18,220	19,970	20,190	426,685	274,156	62,342	49,589	110,593					981,745
22 Salaries and Benefits	1,377,989	1,528,915	1,475,631	1,798,157	1,778,816	1,527,766	1,524,193	1,639,041	-	-	-	-	12,650,508
23 Professional fees	158,025	158,753	160,727	159,587	165,629	159,273	155,356	145,578					1,262,928
24 Supplies	161,829	250,136	164,872	187,956	206,287	249,695	171,478	274,744					1,666,998
25 Utilities	41,897	42,700	40,028	40,081	44,915	40,309	47,677	45,524					343,131
26 Repairs and Maintenance	45,118	36,613	40,799	56,470	40,075	41,589	40,464	48,928					350,056
27 Purchased Services	390,217	395,513	354,590	405,689	361,055	436,034	439,501	420,244					3,202,842
28 Insurance	94,188	90,303	77,166	71,409	71,283	68,935	64,529	80,680					618,494
29 Depreciation	91,901	91,901	91,901	91,901	91,901	91,901	96,309	96,309					744,021
30 Rental and Leases	17,852	32,492	20,979	21,417	25,116	1,219	20,337	19,368					158,780
32 Dues and Subscriptions	8,330	6,022	6,214	6,592	7,840	8,748	6,206	6,165					56,116
33 Other Expense.	45,482	64,915	51,030	55,961	68,269	54,513	37,800	197,282					575,253
34 Total Expenses	2,432,828	2,698,263	2,483,936	2,895,219	2,861,186	2,679,982	2,603,849	2,973,864	-	-	-	-	21,629,126
Surplus (Loss) from Operations	104,279	(393,120)	(721,089)	(1,090,139)	(822,540)	(449,640)	(8,318)	(517,309)	-	-	-	-	(3,897,877)
Non-Operating Income													
37 Tax Revenue	204,167	204,167	204,163	204,163	204,163	204,175	204,163	204,163					1,633,324
38 Other non-operating	20	120	17,719	120	220	(95,495)	53,607	8,837					(14,852)
Interest Income	623	403	24,114	163	320	21,426	385	217					47,650
Interest Expense	(7,507)	(7,594)	(7,504)	(7,177)	(7,002)	(7,261)	(10,310)	(7,225)					(61,580)
IGT Expense													-
39 Total Non-operating	197,304	197,095	238,492	197,269	197,701	122,844	247,844	205,992	-	-	-	-	1,604,542
40 Surplus/(Loss)	301,582	(196,025)	(482,597)	(892,871)	(624,839)	(326,796)	239,526	(311,317)	-	-	-	-	(2,293,335)

BALANCE SHEET

BALANCE SHEET									PY
	July	Aug	Sept	Oct	Nov	Dec	Jan	Feb	June
ASSETS:									
Current Assets									
Cash and Cash Equivalents (Includes CD's)	1,511,284	1,403,907	1,085,094	2,218,655	1,616,814	1,947,742	1,925,620	2,949,037	1,344,262
Gross Patient Accounts Receivable	9,485,223	9,407,701	8,231,530	7,586,726	7,968,263	8,676,578	10,059,363	10,459,804	9,034,356
Less: Reserves for Allowances & Bad Debt	6,448,695	6,374,389	5,757,999	5,320,373	5,655,397	6,099,846	6,930,747	7,133,778	5,860,965
Net Patient Accounts Receivable	3,036,527	3,033,312	2,473,531	2,266,353	2,312,866	2,576,732	3,128,616	3,326,025	3,173,391
Tax Revenue Receivable	2,450,000	2,450,000	2,450,000	2,450,000	1,948,524	977,044	924,764	876,509	55,519
Other Receivables	-3,899	4,389	-33,265	295,202	481,488	634,389	245,901	-1,317,937	164,283
Inventories	278,346	277,571	273,934	274,099	282,701	269,874	285,427	283,430	279,460
Prepaid Expenses	780,163	813,857	766,194	727,526	665,682	660,627	577,596	528,298	552,322
Due From Third Party Payers	0	0							
Due From Affiliates/Related Organizations	0	0							
Other Current Assets	0	0							
Total Current Assets	8,052,421	7,983,036	7,015,487	8,231,835	7,308,075	7,066,408	7,087,925	6,645,363	5,569,237
Assets Whose Use is Limited									
Investments	39,135,702	39,135,702	39,159,533	36,159,533	34,909,533	34,930,232	34,930,232	34,930,232	39,135,702
Other Limited Use Assets	144,375	144,375	144,375	144,375	144,375	144,375	144,375	144,375	144,375
Total Limited Use Assets	39,280,077	39,280,077	39,303,908	36,303,908	35,053,908	35,074,607	35,074,607	35,074,607	39,280,077
Property, Plant, and Equipment									
Land and Land Improvements	3,061,292	3,061,292	3,061,292	3,061,292	3,071,192	3,071,192	3,071,192	3,071,192	3,061,292
Building and Building Improvements	10,194,722	10,194,722	10,194,722	10,194,722	10,533,054	10,533,054	10,533,054	10,533,054	10,194,722
Equipment	13,874,411	14,013,046	14,058,598	14,100,865	14,100,865	14,136,426	14,162,283	14,162,283	13,850,497
Construction In Progress	376,228	627,178	627,878	1,191,715	2,798,223	2,824,104	2,924,104	2,924,104	374,181
Capitalized Interest									
Gross Property, Plant, and Equipment	27,506,653	27,896,238	27,942,490	28,548,594	30,503,334	30,564,776	30,690,633	30,690,633	27,480,692
Less: Accumulated Depreciation	16,894,511	16,986,412	17,078,313	17,170,213	17,262,114	17,354,014	17,450,323	17,546,632	16,802,611
Net Property, Plant, and Equipment	10,612,142	10,909,826	10,864,178	11,378,381	13,241,220	13,210,762	13,240,310	13,144,001	10,678,081
TOTAL UNRESTRICTED ASSETS	57,944,639	58,172,939	57,183,572	55,914,124	55,603,204	55,351,777	55,402,841	54,863,971	55,527,395
Restricted Assets	0	0	0	0	0	0	0	0	0
TOTAL ASSETS	57,944,639	58,172,939	57,183,572	55,914,124	55,603,204	55,351,777	55,402,841	54,863,971	55,527,395

BALANCE SHEET

BALANCE SHEET									PY
	July	Aug	Sept	Oct	Nov	Dec	Jan	Feb	June
LIABILITIES:									
Current Liabilities									
Accounts Payable	1,142,730	1,297,913	830,678	1,295,173	1,276,619	843,265	828,659	1,032,634	1,477,884
Notes and Loans Payable									
Accrued Payroll	968,095	1,101,911	1,218,912	669,378	803,595	947,059	1,056,467	1,198,599	834,286
Patient Refunds Payable									
Due to Third Party Payers (Settlements)	6,734,792	7,066,883	7,107,149	7,012,564	7,407,980	8,054,137	7,967,811	7,591,087	6,671,118
Advances From Third Party Payers									
Current Portion of Def Rev - Txs,	2,245,833	2,041,666	1,837,503	1,633,340	1,429,177	1,225,002	1,020,839	816,676	0
Current Portion - LT Debt	40,000	40,000	40,000	40,000	40,000	40,000	40,000	40,000	40,000
Current Portion of AB915									
Other Current Liabilities (Accrued Interest & Accrued Other)	15,009	22,412	29,772	36,983	43,984	7,261	14,487	21,712	7,511
Total Current Liabilities	11,146,459	11,570,784	11,064,015	10,687,437	11,001,356	11,116,724	10,928,263	10,700,708	9,030,798
Long Term Debt									
USDA Loan	2,775,000	2,775,000	2,775,000	2,775,000	2,775,000	2,775,000	2,735,000	2,735,000	2,775,000
Leases Payable	0	0	0	0	0	0	0	0	0
Less: Current Portion Of Long Term Debt	0	0	0	0	0	0	0	0	0
Total Long Term Debt (Net of Current)	2,775,000	2,775,000	2,775,000	2,775,000	2,775,000	2,775,000	2,735,000	2,735,000	2,775,000
Other Long Term Liabilities									
Deferred Revenue	0	0	0	0	0	0	0	0	0
Other	0	0	0	0	0				
Total Other Long Term Liabilities	0	0	0	0	0	0	0	0	0
TOTAL LIABILITIES	13,921,459	14,345,784	13,839,015	13,462,437	13,776,356	13,891,724	13,663,263	13,435,708	11,805,798
Fund Balance									
Unrestricted Fund Balance	43,721,597	43,721,597	43,721,597	43,721,597	43,721,597	43,721,597	43,721,597	43,721,597	39,042,608
Temporarily Restricted Fund Balance	0	0				0			
Equity Transfer from FRHG	0	0				0			
Net Revenue/(Expenses)	301,582	105,557	-377,040	-1,269,910	-1,894,749	-2,221,545	-1,982,018	-2,293,335	4,678,990
TOTAL FUND BALANCE	44,023,180	43,827,155	43,344,558	42,451,687	41,826,848	41,500,052	41,739,579	41,428,262	43,721,596
TOTAL LIABILITIES & FUND BALANCE	57,944,639	58,172,939	57,183,572	55,914,124	55,603,204	55,391,777	55,402,841	54,863,971	55,527,395

Units of Service														
For the period ending February 28, 2022														
28		243												
Current Month						Bear Valley Community Hospital			Year-To-Date					
Feb-22		Feb-21		Actual -Budget		Act.-Act. Var %		Feb-22		Feb-21		Actual -Budget		Act.-Act. Var %
Actual	Budget	Actual	Variance	Var %	Actual			Budget	Actual	Variance	Var %			
70	43	36	27	62.8%	94.4%	Med Surg Patient Days		346	502	396	(156)	-31.1%	-12.6%	
17	11	13	6	54.5%	30.8%	Swing Patient Days		37	133	194	(96)	-72.2%	-80.9%	
329	378	385	(49)	-13.0%	-14.5%	SNF Patient Days		2,924	3,403	3,307	(479)	-14.1%	-11.6%	
416	432	434	(16)	-3.7%	-4.1%	Total Patient Days		3,307	4,038	3,897	(731)	-18.1%	-15.1%	
22	17	10	5	29.4%	120.0%	Acute Admissions		84	112	91	(28)	-25.0%	-7.7%	
19	17	12	2	11.8%	58.3%	Acute Discharges		86	112	90	(26)	-23.2%	-4.4%	
3.7	2.5	3.0	13.5	533.7%	22.8%	Acute Average Length of Stay		4.0	4.5	4.4	6.0	133.9%	-8.6%	
2.5	1.5	1.29	0.96	62.8%	94.4%	Acute Average Daily Census		1.4	2	1.6	(0.6)	-31.1%	-12.6%	
12.4	13.9	14.2	(1.5)	-11.1%	-13.1%	SNF/Swing Avg Daily Census		12.2	15	14.4	(2.4)	-16.3%	-15.4%	
14.9	15.4	15.5	(0.6)	-3.7%	-4.1%	Total Avg. Daily Census		13.6	17	16.0	(3.0)	-18.1%	-15.1%	
33%	34%	34%	-1%	-3.7%	-4.1%	% Occupancy		30%	37%	36%	-7%	-18.1%	-15.1%	
15	10	3	5	50.0%	400.0%	Emergency Room Admitted		45	80	43	(35)	-43.8%	4.7%	
1,053	1,024	7,111	29	2.8%	-85.2%	Emergency Room Discharged		8,651	7,909	7,111	742	9.4%	21.7%	
1,068	1,035	7,114	33	3.2%	-85.0%	Emergency Room Total		8,696	7,994	7,154	702	8.8%	21.6%	
38	37	254	1	3.2%	-85.0%	ER visits per calendar day		36	33	29	3	8.8%	21.6%	
68%	59%	30%	100%	170.0%	127.3%	% Admits from ER		54%	71%	47%	80%	112.0%	13.4%	
-	-	-	-	0.0%	#DIV/0!	Surgical Procedures I/P		-	-	1	-	#DIV/0!	-100.0%	
1	16	7	(15)	-93.8%	-85.7%	Surgical Procedures O/P		10	137	41	(127)	-92.7%	-75.6%	
1	16	7	(15)	-93.8%	-85.7%	TOTAL Procedures		10	137	42	(127)	-92.7%	-76.2%	
347	767	1,475	(420)	-54.8%	-76.5%	Surgical Minutes Total		3,189	6,656	6,610	(3,467)	-52.1%	-51.8%	

Units of Service
For the period ending February 28, 2022

Current Month						Bear Valley Community Hospital		Year-To-Date				
Feb-22		Feb-21	Actual -Budget		Act.-Act.		Feb-22		Feb-21	Actual -Budget		Act.-Act.
Actual	Budget	Actual	Variance	Var %	Var %		Actual	Budget	Actual	Variance	Var %	Var %
5,060	5,925	5,811	(865)	-14.6%	-12.9%	Lab Procedures	48,875	48,675	48,670	200	0.4%	0.4%
989	912	858	77	8.4%	15.3%	X-Ray Procedures	6,574	6,404	6,016	170	2.7%	9.3%
488	361	352	127	35.2%	38.6%	C.T. Scan Procedures	3,113	2,813	2,722	300	10.7%	14.4%
116	188	172	(72)	-38.3%	-32.6%	Ultrasound Procedures	1,205	1,444	1,442	(239)	-16.6%	-16.4%
36	53	43	(17)	-32.1%	-16.3%	Mammography Procedures	342	371	325	(29)	-7.8%	5.2%
341	249	294	92	36.9%	16.0%	EKG Procedures	2,414	2,245	2,049	169	7.5%	17.8%
74	97	69	(23)	-23.7%	7.2%	Respiratory Procedures	922	775	693	147	19.0%	33.0%
1,622	1,292	1,545	330	25.5%	5.0%	Physical Therapy Procedures	14,309	10,948	11,298	3,361	30.7%	26.7%
1,089	1,744	1,413	(655)	-37.6%	-22.9%	Primary Care Clinic Visits	11,232	12,885	12,296	(1,653)	-12.8%	-8.7%
202	218	267	(16)	-7.3%	-24.3%	Specialty Clinic Visits	1,667	1,630	1,970	37	2.3%	-15.4%
1,291	1,962	1,680	(671)	-34.2%	-23.2%	Clinic	12,899	14,515	14,266	(1,616)	-11.1%	-9.6%
50	75	65	(26)	-34.2%	-23.2%	Clinic visits per work day	71	80	78	(9)	-11.1%	-9.6%
9.8%	19.00%	15.20%	-9.20%	-48.42%	-35.53%	% Medicare Revenue	14.11%	19.00%	15.73%	-4.89%	-25.72%	-10.25%
28.80%	37.00%	32.60%	-8.20%	-22.16%	-11.66%	% Medi-Cal Revenue	34.16%	37.00%	34.78%	-2.84%	-7.67%	-1.76%
56.90%	39.00%	45.50%	17.90%	45.90%	25.05%	% Insurance Revenue	46.70%	39.00%	43.55%	7.70%	19.74%	7.23%
4.50%	5.00%	6.70%	-0.50%	-10.00%	-32.84%	% Self-Pay Revenue	5.03%	5.00%	5.95%	0.03%	0.50%	-15.55%
108.8	155.5	159.3	(46.7)	-30.0%	-31.7%	Productive FTE's	149.81	168.7	147.7	(18.8)	-11.2%	1.4%
178.8	173.2	182.3	5.6	3.3%	-1.9%	Total FTE's	195.13	187.7	168.1	7.5	4.0%	16.1%

**Bear Valley Community Healthcare District
Financial Statements**

Statement of Operations - 12 month trend

	12 mo average												
	Mar-21	Apr-21	May-21	Jun-21	Jul-21	Aug-21	Sep-21	Oct-21	Nov-21	Dec-21	Jan-22	Feb-22	
Gross Patient Revenue													
Inpatient	296,734	225,258	276,670	316,780	205,183	68,218	158,880	137,136	60,476	170,795	20,420	257,006	
Outpatient	912,932	818,519	806,119	895,835	711,151	1,107,243	748,528	714,979	646,865	561,835	498,516	577,371	
Clinic	334,126	319,634	331,766	329,268	286,746	319,875	317,058	307,913	295,014	281,768	208,525	228,215	
Emergency Room	2,912,572	2,674,571	2,572,087	2,989,681	3,855,619	3,551,235	2,705,755	2,582,787	2,926,079	3,737,527	4,406,156	3,648,119	
Skilled Nursing Facility	167,907	172,028	156,051	147,050	162,677	208,828	205,420	211,653	203,217	208,788	254,972	228,068	
Total patient revenue	4,624,271	4,210,010	4,142,693	4,678,614	5,221,376	5,255,400	4,135,641	3,954,468	4,131,650	4,960,713	5,388,589	4,938,779	
Revenue Deductions	C/A	0.48	0.55	0.49	(0.18)	0.50	0.50	0.51	0.55	0.50	0.53	0.49	0.52
Contractual Allow	2,216,245	2,323,468	2,034,429	(827,206)	2,633,241	2,641,433	2,123,304	2,161,012	2,068,222	2,617,644	2,651,496	2,560,405	
Contractual Allow PY	(188,836)	(150,000)	(150,000)	575,412	-	(166,414)	(150,000)	(161,900)	(239,980)	(150,000)	(146,456)	(400,000)	
Charity Care	36,620	6,715	54,986	3,292	13,835	10,821	29,173	3,011	26,998	(1,094)	26,918	40	
Administrative	13,140	1,881	35,199	31,501	13,068	65,243	2,149	470	22,039	3,086	7,909	14,133	
Policy Discount	18,301	17,613	14,532	9,531	11,886	25,978	22,294	21,686	14,924	21,404	45,819	22,912	
Employee Discount	13,458	16,357	10,317	6,142	3,477	8,688	21,685	14,258	27,122	18,715	13,541	20,892	
Bad Debts	360,402	(24,971)	228,137	201,327	(20,228)	286,419	213,959	94,463	178,698	143,638	251,389	259,484	
Denials	102,557	65,318	115,290	73,032	36,893	90,512	122,409	85,491	82,900	62,136	68,244	57,477	
Total revenue deductions	2,571,886	2,256,380	2,342,890	73,032	2,692,172	2,962,680	2,384,974	2,218,491	2,180,924	2,715,529	2,918,860	2,535,343	
Net Patient Revenue	2,052,385	1,953,630	1,799,803	4,605,583	2,529,203	2,292,719	1,750,667	1,735,978	1,950,726	2,245,184	2,469,729	2,403,436	
net / tot pat rev				98.4%	48.4%	43.6%	42.3%	43.9%	47.2%	45.3%	45.8%	48.7%	
Other Revenue	28,724	51,351	94,490	3,508,278	7,903	12,423	12,179	69,102	87,920	(14,843)	125,803	53,119	
Total Operating Revenue	2,081,109	2,004,981	1,894,293	8,113,861	2,537,106	2,305,142	1,762,847	1,805,080	2,038,646	2,230,342	2,595,532	2,456,555	
Expenses													
Salaries	1,122,861	987,947	919,624	1,031,689	1,031,745	1,186,235	1,128,310	1,030,308	1,180,530	1,149,239	1,128,376	1,165,724	
Employee Benefits	316,634	334,760	347,628	69,999	328,024	322,710	327,131	341,164	324,130	316,185	346,228	362,724	
Registry	89,742	26,730	28,200	397,134	18,220	19,970	20,190	426,685	274,156	62,342	49,589	110,593	
Salaries and Benefits	1,529,237	1,349,437	1,295,452	1,498,822	1,377,989	1,528,915	1,475,631	1,798,157	1,778,816	1,527,766	1,524,193	1,639,041	
Professional fees	169,184	162,508	160,653	162,027	158,025	158,753	160,727	159,587	165,629	159,273	155,356	145,578	
Supplies	181,273	130,080	139,834	148,272	161,829	250,136	164,872	187,956	206,287	249,695	171,478	274,744	
Utilities	41,650	42,606	48,851	43,494	41,897	42,700	40,028	40,081	44,915	40,309	47,677	45,524	
Repairs and Maintenance	34,920	45,723	68,127	132,129	45,118	36,613	40,799	56,470	40,075	41,589	40,464	48,928	
Purchased Services	358,181	385,560	380,111	388,958	390,217	395,513	354,590	405,689	361,055	436,034	439,501	420,244	
Insurance	37,712	37,712	37,850	38,640	94,188	90,303	77,166	71,409	71,283	68,935	64,529	80,680	
Depreciation	91,295	118,291	118,446	118,137	91,901	91,901	91,901	91,901	91,901	91,901	96,309	96,309	
Rental and Leases	19,804	25,551	33,742	130,197	17,852	32,492	20,979	21,417	25,116	1,219	20,337	19,368	
Interest													
Dues and Subscriptions	6,511	13,651	1,218	4,534	8,330	6,022	6,214	6,592	7,840	8,748	6,206	6,165	
Other Expense.	48,488	45,411	52,142	42,709	45,482	64,915	51,030	55,961	68,269	54,513	37,800	197,282	
Total Expenses	2,518,255	2,356,530	2,336,424	2,707,919	2,432,828	2,698,263	2,483,936	2,895,219	2,861,186	2,679,982	2,603,849	2,973,864	
Surplus (Loss) from Operations	(437,146)	(351,549)	(442,131)	5,405,942	104,279	(393,120)	(721,089)	(1,090,139)	(822,540)	(449,640)	(8,318)	(517,309)	
Non-Operating Income													
Tax Revenue	204,167	204,167	283,397	261,015	204,167	204,167	204,163	204,163	204,163	204,175	204,163	204,163	
Other non-operating	(2,262)	7,207	4,220	8,294	20	120	17,719	120	220	(95,495)	53,607	8,837	
Interest Income	43,279	1,704	(29)	30,463	623	403	24,114	163	320	21,426	385	217	
Interest Expense	(7,394)	(7,230)	(7,002)	(7,614)	(7,507)	(7,594)	(7,504)	(7,177)	(7,002)	(7,261)	(10,310)	(7,225)	
IGT Expense				(1,036,253)									
Total Non-operating	237,790	205,848	280,587	(744,094)	197,304	197,095	238,492	197,269	197,701	122,844	247,844	205,992	
Surplus/(Loss)	(199,355)	(145,701)	(161,544)	4,661,848	301,582	(196,025)	(482,597)	(892,871)	(624,839)	(326,796)	239,526	(311,317)	

Statistics

	Mar-21	Apr-21	May-21	Jun-21	Jul-21	Aug-21	Sep-21	Oct-21	Nov-21	Dec-21	Jan-22	Feb-22	12 mo average
Patient Days Acute	86	63	81	96	64	11	51	70	19	59	2	70	56
Patient Days Swing	16	-		8	1	-	10	8	-	-	1	17	6
Patient Days SNF	375	387	348	330	366	372	366	377	365	372	377	329	364
ER Visits	870	758	802	889	1,218	1,159	825	842	905	1,314	1,365	1,068	1,001
FHC Clinic Visits	1,491	1,387	1,363	1,466	1,360	1,357	1,483	1,395	1,348	1,226	906	951	1,311
RHC Clinic Visits	207	173	162	187	123	174	197	143	144	146	141	138	161
Dental Visits	295	246	275	248	241	264	202	199	206	202	151	202	228
Surgey - IP	-	-	-	-	-	-	-	-	-	-	-	-	-
Surgey - OP	3	7	3	9	-	-	-	5	-	4	-	1	3
Physical Therapy	1,657	1,439	1,479	1,754	1,946	2,324	2,299	1,824	1,501	1,480	1,313	1,622	1,720



CFO REPORT for

April 2022 Finance Committee and Board

Most Recent 12 months Information

Attached is a summary we have begun reviewing that shows Financial Statement and key Statistics over the past 12 months. Looking at / for trends.

Hematology Equipment – Lease

After review of the options of Lease vs Purchase of the Hematology equipment for Laboratory, we opted to Lease. David Perry of QHR Health helped with an analysis using our recently filed, June 30, 2021, Cost Report. As a Critical Access Hospital with cost based reimbursement, greater reimbursement of \$12,551 was found with the lease.

American Rescue Plan (ARP) SHIP - approval

We have word the Grant for \$258,376 has been approved.

We have a Recommendation for Action for the Board to move forward with the purchase of the portable X-Ray equipment

Our current Capital Budget includes \$54,500 to install temporary barriers in the Emergency Department to create isolation rooms for the treatment of COVID patients. The barriers will allow the ED to transform 4 patient beds into negative pressure isolation rooms without expanding the footprint of the ED. We will move forward with that expenditure / installation. Initial indications are that cost will be less than the budgeted / requested amount.

FY 2023 Budget Work

Managers are busy working on our FY 2023 (July 1, 2022 through June 30, 2023) Budget.

February 2022 check register

Attached is our February 2022 check register for the review of the committee.



The graph below shows urgent care visits by month.



below is a Profit and Loss Statement. It shows Net Revenue and Direct Expenses (no allocation for administrative expenses or management fee from BVCHD).

Profit and Loss Statement Urgent Care FY22

	Oct 2021	Nov 2021	Dec 2021	Jan 2022	Feb 2022	Mar 2022	Apr 2022	May 2022	Jun 2022	YTD
Revenue	29,029.00	31,166.00	70,141.48	117,560.24	89,183.00					337,079.72
Deductions			106.98	3,111.26	1,757.44					4,975.68
Net Revenue	29,029.00	31,166.00	70,034.50	114,448.98	87,425.56	-	-	-	-	332,104.04
Wages	18,909.63	35,436.22	44,122.76	46,254.19	53,993.83					198,716.63
Benefits	4,142.01	6,183.68	8,679.82	9,053.75	14,073.67					42,132.93
Physician Fees	-	3,000.00	17,587.51	21,521.42	30,794.57					72,903.50
Medical Supplies	4,172.77	1,168.41	4,391.22	4,809.49	3,109.85					17,651.74
Office Supplies	1,105.23	1,063.94	930.78	768.39	438.19					4,306.53
Non Med Supplies	-	4,107.36	4,744.77	2,983.20	1,403.57					13,238.90
Minor Equipment	5,036.42	35,868.16	5,801.39	3,514.06	906.51					51,126.54
Contracted Services	24,600.00	5,095.00			3,443.58					33,138.58
Purchase Services	-	8,172.86	4,129.59	910.25	365.00					13,577.70
Rent Expense	3,411.00	8,400.00	54,162.00	13,227.00	13,227.00					92,427.00
Tax and Licenses	524.00	-	4,661.99	94.10	164.53					5,444.62
Postage	544.36									544.36
Dues/Subs	-	1,313.57			465.00					1,778.57
Utilities	208.51	1,209.57	1,325.18	1,094.92	929.89					4,768.07
Misc Exp	-	4,546.90	45.00	510.00	778.05					5,879.95
Total Expenses	62,653.93	115,565.67	150,582.01	104,740.77	124,093.24	-	-	-	-	557,635.62
Net Income	(33,624.93)	(84,399.67)	(80,547.51)	9,708.21	(36,667.68)	-	-	-	-	(225,531.58)

RUN DATE:03/15/22
TIME:12:40

BEAR VALLEY COMMUNITY
CHECK REGISTER
02/01/22 THRU 02/28/22

PAGE 1
GLCKREG

BANK--CHECK-----

CODE	NUMBER	DATE	AMOUNT	PAYEE
ACH	012089	02/01/22	386.97	CARDINAL HEALTH
ACH	012090	02/02/22	86.85	CARDINAL HEALTH
ACH	012091	02/09/22	168.50	CARDINAL HEALTH
ACH	012092	02/10/22	1,060.48	CARDINAL HEALTH
ACH	012093	02/11/22	1,193.89	CARDINAL HEALTH
ACH	012094	02/15/22	179.88	CARDINAL HEALTH
ACH	012095	02/16/22	149.67	CARDINAL HEALTH
ACH	012096	02/17/22	1,296.12	CARDINAL HEALTH
ACH	012097	02/18/22	395.27	CARDINAL HEALTH
ACH	012098	02/22/22	908.19	CARDINAL HEALTH
ACH	012099	02/22/22	761.80	CARDINAL HEALTH
ACH	012100	02/23/22	437.47	CARDINAL HEALTH
ACH	012101	02/24/22	115.33	CARDINAL HEALTH
ACH	012102	02/28/22	573.42	CARDINAL HEALTH
ACH *	012103	02/28/22	1,022.61	CARDINAL HEALTH
FMB *	104432	02/09/22	529.48CR	ZOLL MEDICAL CORP.
FMB	104518	02/03/22	160.64	ABBOTT LABORATORIES
FMB	104519	02/03/22	7,868.00	ACS FACTORS
FMB	104520	02/03/22	5,921.40	AFLAC
FMB	104521	02/03/22	597.37	ALL PROTECTION ALARM
FMB	104522	02/03/22	201.94	AMAZON CAPITAL SERVICES, INC
FMB	104523	02/03/22	925.00	AMERICAN EAGLE JANITORIAL
FMB	104524	02/03/22	548.61	AMERICAN SECURITY RX
FMB	104525	02/03/22	3,200.00	AMN HEALTHCARE ALLIED, INC.
FMB	104526	02/03/22	1,250.00	ANDY WERKING
FMB	104527	02/03/22	19,853.54	BEAR VALLEY ELECTRIC
FMB	104528	02/03/22	186.09	BIG BEAR CITY CSD
FMB	104529	02/03/22	24,760.00	BIG BEAR FAMILY MEDICINE, INC
FMB	104530	02/03/22	586.00	C&D TERMITE & PEST CONTROL
FMB	104531	02/03/22	764.51	CALIF TOOL & WELDING SUPPLY
FMB	104532	02/03/22	1,125.00	CAW DBA VTECH
FMB	104533	02/03/22	3,021.00	CLEAN HARBORS ENVRMTL SERV INC
FMB	104534	02/03/22	54.38	COUNTY OF SAN BERNARDINO
FMB	104535	02/03/22	53.18	COUNTY OF SAN BERNARDINO
FMB	104536	02/03/22	55,015.64	CPSI/EVIDENT
FMB	104537	02/03/22	25,835.44	D CRITEL NURSING ANESTH INC
FMB	104538	02/03/22	22,033.34	DAVID HORNER PC
FMB	104539	02/03/22	1,029.58	DIY HOME CENTER
FMB	104540	02/03/22	971.00	DWP CITY OF BIG BEAR LAKE
FMB	104541	02/03/22	2,575.32	EMERALD TEXTILES
FMB	104542	02/03/22	403.50	EVAN RAYNER
FMB	104543	02/03/22	45.00	EVAN RAYNER
FMB	104544	02/03/22	3,302.46	FISHER HEALTHCARE
FMB	104545	02/03/22	1,200.00	FRONTIER COMMUNICATIONS
FMB	104546	02/03/22	7,210.00	FUSION MEDICAL STAFFING, LLC
FMB	104547	02/03/22	45.00	GARTH HAMBLIN
FMB	104548	02/03/22	110.19	GLOBALSTAR USA
FMB	104549	02/03/22	75.00	GNXCOR USA INC
FMB	104550	02/03/22	675.00	GORDON EQUIPMENT SERVICES
FMB	104551	02/03/22	1,063.11	GRAINGER PARTS

RUN DATE:03/15/22
TIME:12:40

BEAR VALLEY COMMUNITY
CHECK REGISTER
02/01/22 THRU 02/28/22

PAGE 2
GLCKREG

BANK--CHECK-----

CODE	NUMBER	DATE	AMOUNT	PAYEE
FMB	104552	02/03/22	459.02	GRAPHICS DESIGNED INK INC.
FMB	104553	02/03/22	7,085.00	HABEN PROF. CHIROPRACTIC CORP.
FMB	104554	02/03/22	2,703.63	HAVEN TECHNOLOGY CORP
FMB	104555	02/03/22	92.94	HEALTH CARE LOGISTICS
FMB	104556	02/03/22	2,000.00	HIGH DESERT PATHOLOGY MDCL GRP
FMB	104557	02/03/22	8,062.20	INDEED, INC.
FMB	104558	02/03/22	1,100.00	INLAND EMPIRE COMM COLLABOR
FMB	104559	02/03/22	195.80	J AND J PRODUCE CO
FMB	104560	02/03/22	520.00	JAMES SKOEN
FMB	104561	02/03/22	50.00	JON BOOTH
FMB	104562	02/03/22	214.72	KERRI JEX
FMB	104563	02/03/22	2,684.32	KLH MARKETING, INC.
FMB	104564	02/03/22	9,027.00	LAKEBEAR PARTNERS, LP
FMB	104565	02/03/22	724.59	LEARN CPR 4 LIFE
FMB	104566	02/03/22	365.00	LEWIS BRISBOIS BISGAARD SMITH
FMB	104567	02/03/22	32,330.00	LEWIS BRISBOIS BISGUAARD SMITH
FMB	104568	02/03/22	5,281.25	LIFESTREAM
FMB	104569	02/03/22	39.00	MACK TOLLE
FMB	104570	02/03/22	1,066.42	MARSH & MCLENNAN AGENCY LLC
FMB	104571	02/03/22	1,683.06	MATHESON TRI GAS INC.
FMB	104572	02/03/22	4,256.00	MEDICAL LABORATORY CONNECTIONS
FMB	104573	02/03/22	788.57	MEDISTAR HEALTHCARE CONN. CORP
FMB	104574	02/03/22	.00	VOIDED
FMB	104575	02/03/22	4,392.38	MEDLINE INDUSTRIES INC
FMB	104576	02/03/22	732.39	MICHAEL MURSICK
FMB	104577	02/03/22	4,000.00	MICHAEL NORMAN DO
FMB	104578	02/03/22	28.83	MINDRAY DS USA INC
FMB	104579	02/03/22	2,020.00	MISSION SURGICAL CLINIC
FMB	104580	02/03/22	559.64	MOBILE MODULAR PORTABLE STORAG
FMB	104581	02/03/22	2,345.21	ORTHO-CLINICAL DIAGNOSTICS INC
FMB	104582	02/03/22	8,097.97	PACIFIC COMPANIES, INC.
FMB	104583	02/03/22	1,430.00	PRAMANN CHIROPRACTIC INC.
FMB	104584	02/03/22	1,439.00	QUADIENT FINANCE USA, INC
FMB	104585	02/03/22	610.19	READY REFRESH BY NESTLE
FMB	104586	02/03/22	1,070.00	RENAISSANCE IMAGING MEDICAL AS
FMB	104587	02/03/22	8,336.00	ROSHAN T MELVANI MD INC
FMB	104588	02/03/22	.00	SANDY FLORES RODRIGUEZ
FMB	104589	02/03/22	495.00	SIEMENS HEALTHCARE DIAGNOSTICS
FMB	104590	02/03/22	994.13	SOFTSCRIPT INC
FMB	104591	02/03/22	12,508.14	SOUTHWEST GAS CORPORATION
FMB	104592	02/03/22	489.65	STAPLES ADVANTAGE
FMB	104593	02/03/22	1,760.00	STEVEN GROKE
FMB	104594	02/03/22	19,650.00	STEVEN MICHAEL KNAPIK
FMB	104595	02/03/22	3,000.00	STEWART CA HOLDINGS I, LLC
FMB	104596	02/03/22	4,200.00	SUMMIT PLAZA
FMB	104597	02/03/22	4,689.25	SYSO RIVERSIDE INC
FMB	104598	02/03/22	5,488.42	T-SYSTEM, INC
FMB	104599	02/03/22	3,520.25	TRANE US, INC
FMB	104600	02/03/22	960.00	TRI RAD INC
FMB	104601	02/03/22	46.48	UNITED PARCEL SERVICE
FMB	104602	02/03/22	857.04	US FOOD SERVICE INC

RUN DATE:03/15/22
TIME:12:40

BEAR VALLEY COMMUNITY
CHECK REGISTER
02/01/22 THRU 02/28/22

PAGE 3
GLCKREG

BANK--CHECK-----

CODE	NUMBER	DATE	AMOUNT	PAYEE
FMB	104603	02/03/22	12,800.00	V. MADHU ANVEKAR MD, INC.
FMB	104604	02/03/22	892.90	WAXIE SANITARY SUPPLY
FMB	104605	02/03/22	36.00	ALLMAN BRIAN
FMB	104606	02/03/22	117.81	APOSTOLOU LINDA
FMB	104607	02/03/22	129.86	BECKERBIEN CAROL L
FMB	104608	02/03/22	10.51	CARNEY REFUGIO
FMB	104609	02/03/22	30.00	DANIEL JUNE
FMB	104610	02/03/22	40.00	DONADA LICHILLE
FMB	104611	02/03/22	15.00	GEHRKE CEARA R
FMB	104612	02/03/22	5.00	HILLIARD JONI
FMB	104613	02/03/22	150.00	HOSKINS RAYMOND
FMB	104614	02/03/22	150.00	KIM HOONIE
FMB	104615	02/03/22	100.00	LAWSON KLAUS
FMB	104616	02/03/22	20.00	LESPERANCE MICHAEL
FMB	104617	02/03/22	15.00	LORENZEN JEANETTE E
FMB	104618	02/03/22	74.00	MILLER ARLENE
FMB	104619	02/03/22	150.00	ROOS SARAH
FMB	104620	02/03/22	10.51	SCHUBER JOSEPH
FMB	104621	02/03/22	96.17	VARGAS JACOB
FMB	104622	02/03/22	1,729.81	VASQUEZ EDWARD
FMB	104623	02/03/22	70.00	WADE RACHEL
FMB	104624	02/03/22	441.93	FAMILY DEVELOPMENT RESOURCES
FMB *	104625	02/03/22	259.05	MARTA L. COMBS
FMB	104633	02/10/22	62.62	BECKERBIEN CAROL L
FMB	104634	02/10/22	717.96	ADP SCREENING AND SELECTION SE
FMB	104635	02/10/22	832.37	AGILITI HEALTH, INC.
FMB	104636	02/10/22	1,747.07	AIR CONTROL SPECIALTIES, INC.
FMB	104637	02/10/22	831.50	ALBERTSONS SAFEWAY
FMB	104638	02/10/22	.00	VOIDED
FMB	104639	02/10/22	2,037.27	AMAZON CAPITAL SERVICES, INC
FMB	104640	02/10/22	241.00	AMERICAN PROFICIENCY INSTITUTE
FMB	104641	02/10/22	22,950.53	BEAR VALLEY ELECTRIC
FMB	104642	02/10/22	307.90	BEST SGS INC.
FMB	104643	02/10/22	574.98	BEST WESTERN PLUS BIG BEAR CHA
FMB	104644	02/10/22	3,733.22	BIG BEAR DISPOSAL
FMB	104645	02/10/22	9,210.00	BIG BEAR GUIDE
FMB	104646	02/10/22	243.24	BIG BEAR PAINT CENTER INC
FMB	104647	02/10/22	628.66	BIO RAD LABORATORIES, INC.
FMB	104648	02/10/22	1,088.91	BRACCO DIAGNOSTICS INC
FMB	104649	02/10/22	293.00	C&D TERMITE & PEST CONTROL
FMB	104650	02/10/22	3,514.00	CALIF TOOL & WELDING SUPPLY
FMB	104651	02/10/22	3,482.50	CALIFORNIA BOILER INC
FMB	104652	02/10/22	300.00	CRESTLINE FISRT BAPTIST
FMB	104653	02/10/22	2,497.98	DE LAGE LANDEN
FMB	104654	02/10/22	224.00	DEPT OF JUSTICE
FMB	104655	02/10/22	2,194.66	EMERALD TEXTILES
FMB	104656	02/10/22	1,635.71	FASTENAL CO
FMB	104657	02/10/22	17,696.67	FISHER HEALTHCARE
FMB	104658	02/10/22	1,256.80	FRESENIUS KABI LLC
FMB	104659	02/10/22	3,031.00	FUSION MEDICAL STAFFING, LLC
FMB	104660	02/10/22	59.80	GRAPHICS DESIGNED INK INC.

RUN DATE:03/15/22
TIME:12:40

BEAR VALLEY COMMUNITY
CHECK REGISTER
02/01/22 THRU 02/28/22

PAGE 4
GLCKREG

BANK--CHECK-----

CODE	NUMBER	DATE	AMOUNT	PAYEE
FMB	104661	02/10/22	20.00	INNOVATIVE CREDIT SOLUTIONS
FMB	104662	02/10/22	16,434.00	IRIS TELEHEALTH MEDICAL GROUP
FMB	104663	02/10/22	471.33	J AND J PRODUCE CO
FMB	104664	02/10/22	1,527.00	KBHR FM
FMB	104665	02/10/22	8,259.29	LABORATORY CORP OF AMERICA
FMB	104666	02/10/22	575.10	MARSH & MCLENNAN AGENCY LLC
FMB	104667	02/10/22	3,581.04	MATHESON TRI GAS INC.
FMB	104668	02/10/22	.00	VOIDED
FMB	104669	02/10/22	8,843.52	MEDLINE INDUSTRIES INC
FMB	104670	02/10/22	1,448.38	MEGAN MEADORS
FMB	104671	02/10/22	2,499.99	MICRO MERCHANT SYSTEMS, INC.
FMB	104672	02/10/22	131.94	MOONRIDGE FUEL
FMB	104673	02/10/22	1,217.94	NRC HEALTH
FMB	104674	02/10/22	8,489.78	ORTHO-CLINICAL DIAGNOSTICS INC
FMB	104675	02/10/22	171.54	PERFORMANCE HEALTH SUPPLY INC.
FMB	104676	02/10/22	2,040.00	PHILIPS HEALTHCARE
FMB	104677	02/10/22	273.38	REBEKAH BRENDEN
FMB	104678	02/10/22	169.42	SANDY FLORES RODRIGUEZ
FMB	104679	02/10/22	728.18	SIEMENS HEALTHCARE DIAGNOSTICS
FMB	104680	02/10/22	1,680.42	STAPLES ADVANTAGE
FMB	104681	02/10/22	931.25	STERICYCLE INC
FMB	104682	02/10/22	7,170.80	SYSKO RIVERSIDE INC
FMB	104683	02/10/22	2,194.81	TRI ANIM HEALTH SERVICES INC
FMB	104684	02/10/22	200.00	TRI-STATE ENVIRONMENTAL
FMB	104685	02/10/22	538.47	UNITED NURSES ASSOCIATION
FMB	104686	02/10/22	36.00	UNITED PARCEL SERVICE
FMB	104687	02/10/22	1,841.73	VISA
FMB	104688	02/10/22	626.40	WAXIE SANITARY SUPPLY
FMB	104689	02/10/22	529.48	ZOLL MEDICAL CORP.
FMB	104690	02/10/22	970.50	ZONES INC
FMB	104691	02/10/22	150.00	NURTURING FATHERS PROGRAM
FMB	104692	02/10/22	158.18	XEROX CORP
FMB *	104693	02/10/22	529.48	ZOLL MEDICAL CORP.
FMB	104698	02/17/22	38.78	BRYANT TERRIA
FMB	104699	02/17/22	134.50	BURCHIT SUSAN
FMB	104700	02/17/22	148.50	CLEMENS CHRISTOPHER
FMB	104701	02/17/22	30.00	DEVAVULTFORD CRETA J
FMB	104702	02/17/22	268.30	GERSON JAMIE
FMB	104703	02/17/22	15.00	GERSON JAMIE
FMB	104704	02/17/22	67.50	LARKIN WANDA G
FMB	104705	02/17/22	25.00	MASADO NORMINTA
FMB	104706	02/17/22	8.00	RITENOUR MARGARET ANNE
FMB	104707	02/17/22	125.00	WARDEN JASON J
FMB	104708	02/17/22	2,247.54	ADP INC
FMB	104709	02/17/22	219.49	ADP SCREENING AND SELECTION SE
FMB	104710	02/17/22	6,181.00	AGILITI HEALTH, INC.
FMB	104711	02/17/22	89.46	AIRGAS USA,LLC
FMB	104712	02/17/22	1,617.25	ALL PROTECTION ALARM
FMB	104713	02/17/22	4,202.29	AMAZON CAPITAL SERVICES, INC
FMB	104714	02/17/22	6,400.00	AMN HEALTHCARE ALLIED, INC.
FMB	104715	02/17/22	225.00	AMY JONES

RUN DATE:03/15/22
TIME:12:40

BEAR VALLEY COMMUNITY
CHECK REGISTER
02/01/22 THRU 02/28/22

PAGE 5
GLCKREG

BANK--CHECK-----

CODE	NUMBER	DATE	AMOUNT	PAYEE
FMB	104716	02/17/22	3,775.75	ANDY MEADORS BRANDING, INC
FMB	104717	02/17/22	262.63	BEAR VALLEY ELECTRIC
FMB	104718	02/17/22	31,144.00	BETA HEALTHCARE GROUP
FMB	104719	02/17/22	29,810.64	BETA HEALTHCARE GROUP
FMB	104720	02/17/22	1,076.20	BIG BEAR GRIZZLY
FMB	104721	02/17/22	2,022.50	BIO RAD LABORATORIES, INC.
FMB	104722	02/17/22	180.00	CALIF TELEHEALTH NETWORK
FMB	104723	02/17/22	7,100.00	CANON MEDICAL SYSTEMS USA, INC
FMB	104724	02/17/22	1,160.50	CARDIOLOGY SPECIALISTS MED GRP
FMB	104725	02/17/22	7,982.09	CAREFUSION SOLUTIONS LLC
FMB	104726	02/17/22	25,217.00	CENTER FOR ORAL HEALTH
FMB	104727	02/17/22	3,109.26	CHARTER COMMUNICATIONS HOLDING
FMB	104728	02/17/22	1,750.00	CHEROKEE CHEMICAL CO., INC
FMB	104729	02/17/22	15,541.64	CPSI/EVIDENT
FMB	104730	02/17/22	1,027.30	DIRECT SUPPLY HEALTHCARE EQUIP
FMB	104731	02/17/22	75.00	DOOLEY COMPANY
FMB	104732	02/17/22	2,588.92	EMERALD TEXTILES
FMB	104733	02/17/22	9,865.92	EMPLOYMENT DEVELOPMENT DEPT
FMB	104734	02/17/22	654.90	ENDURA STEEL, INC
FMB	104735	02/17/22	902.92	EXPERIAN HEALTH, INC
FMB	104736	02/17/22	11,946.33	FISHER HEALTHCARE
FMB	104737	02/17/22	716.00	FOX FARM STORAGE
FMB	104738	02/17/22	5,135.20	FUSION MEDICAL STAFFING, LLC
FMB	104739	02/17/22	100.00	GLOBO LANGUAGE SOLUTIONS LLC
FMB	104740	02/17/22	197.40	GRAINGER PARTS
FMB	104741	02/17/22	210.11	GRAPHIC PRODUCTS, INC
FMB	104742	02/17/22	211.65	INTRADO ENTERPRISE COLLAB INC
FMB	104743	02/17/22	1,042.14	J AND J PRODUCE CO
FMB	104744	02/17/22	2,881.54	JOHNSON CNTRLS FIRE PROT. LP
FMB	104745	02/17/22	28,054.00	JWT & ASSOCIATES, LLP
FMB	104746	02/17/22	429.00	KELLI GORA
FMB	104747	02/17/22	724.59	LEARN CPR 4 LIFE
FMB	104748	02/17/22	5,134.50	MARSH & MCLENNAN AGENCY LLC
FMB	104749	02/17/22	291.47	MARY NORMAN
FMB	104750	02/17/22	1,683.06	MATHESON TRI GAS INC.
FMB	104751	02/17/22	6,975.00	MCNEIL, TROPP & BRAUN, LLP
FMB	104752	02/17/22	4,144.00	MEDICAL LABORATORY CONNECTIONS
FMB	104753	02/17/22	739.29	MEDISTAR HEALTHCARE CONN. CORP
FMB	104754	02/17/22	.00	VOIDED
FMB	104755	02/17/22	14,992.95	MEDLINE INDUSTRIES INC
FMB	104756	02/17/22	11,070.37	MEGAN MEADORS
FMB	104757	02/17/22	479.89	MINDRAY DS USA INC
FMB	104758	02/17/22	51,575.00	NUWEST GROUP HOLDINGS, LLC
FMB	104759	02/17/22	22,654.21	ORTHO-CLINICAL DIAGNOSTICS INC
FMB	104760	02/17/22	94,903.58	QUORUM HEALTH RESOURCES LLC
FMB	104761	02/17/22	1,162.38	SOFTSCRIPT INC
FMB	104762	02/17/22	346.60	STAPLES ADVANTAGE
FMB	104763	02/17/22	3,947.93	SYSKO RIVERSIDE INC
FMB	104764	02/17/22	1,140.00	TASTY PRODUCTS, INC
FMB	104765	02/17/22	110.37	TAVOCA INC
FMB	104766	02/17/22	10,172.50	TELE CONNECT THERAPIES

RUN DATE:03/15/22
TIME:12:40

BEAR VALLEY COMMUNITY
CHECK REGISTER
02/01/22 THRU 02/28/22

PAGE 6
GLCKREG

BANK--CHECK-----

CODE	NUMBER	DATE	AMOUNT	PAYEE
FMB	104767	02/17/22	9.98	TRACIE CALLAHAN
FMB	104768	02/17/22	213.41	TRI ANIM HEALTH SERVICES INC
FMB	104769	02/17/22	808.13	TRUMED FINANCIAL SERVICES - LB
FMB	104770	02/17/22	65.37	UNITED PARCEL SERVICE
FMB	104771	02/17/22	682.33	US FOOD SERVICE INC
FMB	104772	02/17/22	1,457.79	WAXIE SANITARY SUPPLY
FMB	104773	02/17/22	94.10	ZONES INC
FMB *	104774	02/17/22	1,337.00	DEPT OF MOTOR VEHICLES
FMB	104777	02/24/22	855.10	AGILITI HEALTH, INC.
FMB	104778	02/24/22	2,760.00	AMN HEALTHCARE ALLIED, INC.
FMB	104779	02/24/22	54.00	ARROWHEAD UNITED WAY
FMB	104780	02/24/22	314.98	AT&T MOBILITY LLC
FMB	104781	02/24/22	1,002.08	AVANTE HEALTH SOLUTIONS
FMB	104782	02/24/22	5,441.30	BEAR VALLEY ELECTRIC
FMB	104783	02/24/22	200.00	BENDING ENERGY PHOTOGRAPHY
FMB	104784	02/24/22	287.49	BEST WESTERN PLUS BIG BEAR CHA
FMB	104785	02/24/22	889.20	BIG BEAR GRIZZLY
FMB	104786	02/24/22	319.50	BIO RAD LABORATORIES, INC.
FMB	104787	02/24/22	1,069.00	CALIFORNIA CHAMBER OF COMMERCE
FMB	104788	02/24/22	56,062.01	CPSI/EVIDENT
FMB	104789	02/24/22	2,387.10	EMERALD TEXTILES
FMB	104790	02/24/22	128.28	EVAN RAYNER
FMB	104791	02/24/22	55.47	FISHER HEALTHCARE
FMB	104792	02/24/22	3,588.50	FOXIT SOFTWARE INC
FMB	104793	02/24/22	558.58	FRESENIUS KABI LLC
FMB	104794	02/24/22	75.00	GNXCOR USA INC
FMB	104795	02/24/22	58.62	GRAINGER PARTS
FMB	104796	02/24/22	295.66	HAMILTON MEDICAL INC
FMB	104797	02/24/22	127,500.00	HENNIG RUIZ & SINGH, P.C.
FMB	104798	02/24/22	1,100.00	INLAND EMPIRE COMM COLLABOR
FMB	104799	02/24/22	390.06	LEASING ASSOC. BARRINGTON, INC
FMB	104800	02/24/22	79.70	LEGALSHIELD
FMB	104801	02/24/22	3,807.50	LIFESTREAM
FMB	104802	02/24/22	1,950.00	MEDICAL DISPATCH
FMB	104803	02/24/22	600.00	MEDICOM TECHNOLOGIES INC
FMB	104804	02/24/22	9,965.71	MEDLINE INDUSTRIES INC
FMB	104805	02/24/22	559.64	MOBILE MODULAR PORTABLE STORAG
FMB	104806	02/24/22	66,818.00	NUWEST GROUP HOLDINGS, LLC
FMB	104807	02/24/22	1,039.82	ORTHO-CLINICAL DIAGNOSTICS INC
FMB	104808	02/24/22	3,466.09	PACIFIC COMPANIES, INC.
FMB	104809	02/24/22	287.23	PETTY CASH - VICTORIA SHIVELY
FMB	104810	02/24/22	171.00	RAM HEALTHCARE CONSULTING GROU
FMB	104811	02/24/22	781.64	RELIAS LLC
FMB	104812	02/24/22	260.08	SMILEMAKERS
FMB	104813	02/24/22	11,596.37	SOUTHWEST GAS CORPORATION
FMB	104814	02/24/22	269.81	STAPLES ADVANTAGE
FMB	104815	02/24/22	131.19	TRACIE CALLAHAN
FMB	104816	02/24/22	570.66	TRACY LEWIS
FMB	104817	02/24/22	46.48	UNITED PARCEL SERVICE
FMB	104818	02/24/22	650.71	US FOOD SERVICE INC
FMB	104819	02/24/22	968.24	WAXIE SANITARY SUPPLY

RUN DATE:03/15/22
TIME:12:40

BEAR VALLEY COMMUNITY
CHECK REGISTER
02/01/22 THRU 02/28/22

PAGE 7
GLCKREG

BANK--CHECK-----

CODE	NUMBER	DATE	AMOUNT	PAYEE
FMB	104820	02/24/22	195.18	XEROX CORP
FMB	104821	02/24/22	747.68	CPSI/EVIDENT
FMB	104822	02/24/22	585.15	UNITED NURSES ASSOCIATION
TOTALS:			1,314,566.71	