



*MISSION*

*It is our mission to deliver quality healthcare to the residents of and visitors to Big Bear Valley through the most effective use of available resources.*

*VISION*

*To be the premier provider of emergency medical and healthcare services in our Big Bear Valley.*

---

**NOTICE AND CALL OF A  
BOARD OF DIRECTORS  
SPECIAL FINANCE COMMITTEE MEETING**

Tuesday, December 10, 2024  
1:00 p.m. Open Session @ Main Conference Room  
41870 Garstin Drive, Big Bear Lake, CA 92315

NOTICE IS HEREBY GIVEN that a Special Meeting of the Board of Directors, Finance Committee of the Bear Valley Community Healthcare District will be held on Tuesday, November 10, 2024. Open Session beginning at 1:00 p.m. A copy of the agenda is attached hereto.

Dated: December 09, 2024

A handwritten signature in black ink that reads "Shelly Egerer".

Shelly Egerer  
Executive Assistant



**BOARD OF DIRECTORS  
SPECIAL FINANCE COMMITTEE MEETING AGENDA  
TUESDAY, DECEMBER 10, 2024  
1:00 PM OPEN SESSION MAIN CONFERENCE ROOM  
41870 GARSTIN DRIVE, BIG BEAR LAKE, CA 92315**

---

Copies of staff reports or other written documentation relating to each item of business referred to on this agenda are on file in the Chief Executive Officer's Office and are available for public inspection or purchase at 10 cents per page with advance written notice. In compliance with the Americans with Disabilities Act and Government Code Section 54954.2, if you need special assistance to participate in a District meeting or other services offered by the District, please contact Administration (909) 878-8214. Notification at least 48 hours prior to the meeting or time when services are needed will assist the District staff in assuring that reasonable arrangements can be made to provide accessibility to the meeting or service. **DOCUMENTS RELATED TO OPEN SESSION AGENDAS (SB 343)** Any public record, relating to an open session agenda item, that is distributed within 72 hours prior to the meeting is available for public inspection at the public counter located in the Administration Office, located at 41870 Garstin Drive, Big Bear Lake, CA 92315. For questions regarding any agenda item, contact Administration at (909) 878-8214.

---

**OPEN SESSION**

1. **CALL TO ORDER** **Jack Briner, Treasurer**
2. **ROLL CALL** **Shelly Egerer, Executive Assistant**
3. **ADOPTION OF AGENDA\***
4. **PUBLIC FORUM FOR OPEN SESSION**  
Opportunity for members of the public to address the Committee on Open Session items.  
*(Government Code Section 54954.3, there will be a three (3) minute limit per speaker. Any report or data required at this time must be requested in writing, signed and turned in to Administration. Please state your name and city of residence.)*
5. **DIRECTORS COMMENTS**
6. **APPROVAL OF MINUTES\***  
A. November 05, 2024
7. **OLD BUSINESS\***
  - None
8. **NEW BUSINESS\***
  - None
9. **PRESENTATION AND REVIEW OF FINANCIAL STATEMENTS\***  
A. October 2024
10. **ADJOURNMENT\*** **\* Denotes Actions Items**

**BEAR VALLEY COMMUNITY HEALTHCARE DISTRICT  
BOARD OF DIRECTORS  
SPECIAL FINANCE COMMITTEE MEETING MINUTES  
41870 GARSTIN DR., BIG BEAR LAKE, CA 92315  
NOVEMBER 05, 2024**

**MEMBERS** Steven Baker, President  
**PRESENT:** Jack Briner, Treasurer  
Jim Schlenker, CFO

Evan Rayner, CEO  
Nicole Wheeler, Medical Staff Coor

**STAFF:** Kerri Jex, CNO

**OTHER:** None

**COMMUNITY**

**MEMBERS:** Joseph Kelly Kristina Niehls Dan Gulbranson

**ABSENT:** None

---

**OPEN SESSION**

**1. CALL TO ORDER:**

Board Member Briner called the meeting to order at 1:00 p.m.

**2. ROLL CALL:**

Steven Baker and Jack Briner were present. Also present were Evan Rayner, CEO, Jim Schlenker, CFO and Nicole Wheeler. Absent was Shelly Egerer, Executive Assistant.

**3. ADOPTION OF AGENDA:**

**President Baker motioned to adopt the November 05, 2024 Special Finance Committee Meeting Agenda as presented. Second by Board Member Briner to adopt the November 05, 2024 Special Finance Committee Meeting Agenda as presented. Board Member Briner called for a vote. A vote in favor of the motion was unanimously approved.**

- President Baker - yes
- Board Member Briner- yes

**CLOSED SESSION**

**1. PUBLIC FORUM FOR CLOSED SESSION:**

Board Member Briner opened the Hearing Section for Public Comment on Closed Session items at 1:00 p.m. Hearing no request to address the Finance Committee, Board Member Briner closed the Hearing Section at 1:00 p.m.

**2. ADJOURN TO CLOSED SESSION:**

**President Baker motioned to adjourn to Closed Session at 1:01 p.m. Second by Board Member Briner to adjourn to Closed Session at 1:01 p.m. Board Member Briner called for a vote. A vote in favor of the motion was unanimously approved.**

- President Baker - yes
- Board Member Briner- yes

## OPEN SESSION

**1. CALL TO ORDER:**

Board Member Briner called the meeting to order at 1:30 p.m.

**2. RESULTS OF CLOSED SESSION:**

Board Member Briner stated there was no reportable action from Closed Session.

**3. PUBLIC FORUM FOR OPEN SESSION:**

Board Member Briner opened the Hearing Section for Public Comment on Open Session items at 1:30 p.m. Hearing no request to address the Finance Committee, Board Member Briner closed the Hearing Section at 1:30 p.m.

**4. DIRECTOR'S COMMENTS:**

- None

**5. APPROVAL OF MINUTES:**

A. October 03, 2024

**President Baker motioned to approve the October 03, 2024 minutes as presented. Second by Board Member Briner to approve the October 03, 2024 and minutes as presented. Board Member Briner called for a vote. A vote in favor of the motion was unanimously approved.**

- President Baker - yes
- Board Member Briner- yes

**6. OLD BUSINESS:**

- None

**7. NEW BUSINESS\***

- None

**8. PRESENTATION AND REVIEW OF FINANCIAL STATEMENTS\***

**A. September 2024 Finances:**

- Mr. Schlenker reported the following information:
  - \$2.2 Million in cash
  - Days cash on hands 396
  - Loss for the month was \$ 748,651
  - Patient revenue is 15.6% lower than budget
  - Revenue deductions were at 50%, target was 49.4%
  - Net patient revenue was 16.5% less than budget
  - Total Expenses were 7.0% lower than budget
  - Supplies were over budget due to equipment needed for the Line Fire
  - September was better than expected due to the Line Fire
  - Quality money was received approximately \$45,000 in Quality funds
  - 8 days of closure of non-critical services during the Line Fire
  - Clinic visits close to target
  - Laboratory and Radiology decreased due to closure
  - Requested a review with Noridian to update Medicare rates
  - Acute patient days have increased

- SNF continues to increase
  - Emergency Department visits have decreased which is expected as seasonal
  - AR days are 71.5
- Mr. Rayner reported the district is working with our insurance to assist in the loss from the Line Fire, a claims adjuster was on site to complete an evaluation of results from the fire damage and loss of services.

**President Baker motioned to approve the September 2024 Finance Report as presented. Second by Board Member Briner to approve the September 2024 Finance Report as presented. Board Member Briner called for a vote. A vote in favor of the motion was unanimously approved.**

- President Baker - yes
- Board Member Baker - yes

## **9. ADJOURNMENT\***

**President Baker motioned to adjourn the meeting at 1:58 p.m. Second by Board Member Briner to adjourn the meeting. Board Member Baker called for a vote. A vote in favor of the motion was unanimously approved.**

- President Baker - yes
- Board Member Briner- yes



Finance Report  
October 2024 Results

## Summary for October 2024

- Cash on hand \$ 2,301,414
- Investments \$ 15,373,142
- Board Designated Funds \$ 25,000,000
- Days Cash on hand, including investments with LAIF – 379
- Operating **Loss** for the month of \$1,091,574 vs projected loss of \$619,810
- Total **Loss** of \$311,840 (vs a budget of \$76,190 surplus)
- Total Patient Revenue was 3.2% lower than Budget for the month
- Revenue deductions were at 57% of total revenue (12.5% higher than budget)
- Net Patient Revenue was 18.6% less than budget
- Total Expenses were 0.4% lower than budget



## October 2024 Financial Results

### **Key Statistics**

Total Patient Days were less than budget (773 vs 840). Our Acute and Swing average daily census was 5.2. Emergency Room visits did not exceed the monthly target (801 vs 838). Surgical procedures were below the monthly target (13 vs 26). Primary care visits were higher than projected (2,212 vs 1,704) as were specialty clinic visits (331 vs 270). Both primary care and specialty clinic visits exceed their year to date targets by 1,050 and 167 visits respectively. Lab (6,897 vs 6,460) and Imaging (combined modalities of 1,353 vs 1,343) exceeded budgeted targets with only X-ray falling short of its monthly target by 62.

### **Financial Highlights**

Overall revenues for the month (\$5,370,808 vs \$5,550,587) was just shy of target with shortfalls in Inpatient (\$138,927) and Emergency Services (\$279,276).

Total Revenue Deductions were 12.5% higher than budget for the month (at 57.4% of gross revenue). A slightly higher percentage of revenue for Medicare (17.6% vs 15.0%) and Medical (46.4% vs 37.0%) caused larger contractual allowances in these areas. While total gross accounts receivable did decrease to just over \$13 million, days in accounts receivable did climb to 75.4.

Total Expenses were slightly exceeded the current month target (\$16K). The main areas of variance included Salaries and Benefits including registry (under by \$602) which included benefits that were less than budget and Registry costs which exceeded budget (by \$38K), Professional fees (under by \$22K), Supplies (under by \$6K), Utilities (under by \$5K), Repairs and Maintenance (over by \$13K), Rental and Leases (over by \$5K), Dues and Subscriptions (under by \$4K), and Other Expenses (over by \$23K).

While salaries and benefits were under our budget projection, Registry (non-employed RN staff) did increase by exceed the target for the month (\$107K vs \$70K). Both Salaries (by \$425K) and Benefits (by \$89K) are under their projections for the first four months of this fiscal year while Registry costs have exceeded their year-to-date target (by \$125K). The primary reason for the overage in repairs and maintenance was related to Radiology equipment repairs which were just over \$12K. Other expenses included some minor equipment for various departments (replacement washers and dryers, floor scrubbers, utility carts and a pressure washer for Environmental services; replacement carbon filters for Plant; an updated copy machine for the FHC; various expenses related to our Fall





Festival event; additional marketing related to Measure U as well as settlement/attorney fees related to the parcel tax issue. With the exception of some funds related to the parcel tax issue, most other items were planned for in the budget this fiscal year.

Full Time Equivalent staffing (for BVCHD employed staff) was at 210.6 vs a current month target of 213.5.

Other non-operating revenue for the month totaled \$779,734 and included county tax revenue (\$229,167), IEHP funding for P4P (pay for performance; \$484K and \$25K) as well as some additional IEHP funds related to physician recruitment (\$37K).

This combination led to a loss from Operations of \$1,091,574 as compared to an expected loss of \$619,810.

Our Total Loss for the month was \$311,840 versus an expected surplus of \$76,190.

On a year to date basis, we have an overall loss of \$1,163,576 as compared to a surplus the previous year of \$383,761.

Our Operating Cash and Investments totaled \$42,047,066 with days of cash on hand of 379 and days in accounts receivable of 75.4.

**Bear Valley Community Healthcare District**  
**Financial Statements October 2024**

**Financial Highlights—Hospital**  
**STATEMENT OF OPERATIONS**

		A	B	C	D	E	F	G	H	I	J
		Current Month					Year-to-Date				
		FY 23/24	FY 24/25		VARIANCE		FY 23/24	FY 24/25		VARIANCE	
		Actual	Actual	Budget	Amount	%	Actual	Actual	Budget	Amount	%
1	Total patient revenue	5,014,923	5,370,808	5,550,587	(179,779)	-3.2%	21,198,814	22,349,491	23,631,050	(1,281,558)	-5.4%
2	Total revenue deductions	2,084,385	3,084,830	2,741,083	343,747	12.5%	10,223,228	12,999,614	11,666,236	1,333,377	11.4%
3	% Deductions	42%	57%	49%			48%	58%	49%		
4	Net Patient Revenue	2,930,538	2,285,978	2,809,504	(523,527)	-18.6%	10,975,586	9,349,877	11,964,813	(2,614,936)	-21.9%
5	% Net to Gross	58%	43%	51%			52%	42%	51%		
6	Other Revenue	89,878	156,145	88,612	67,533	76.2%	189,823	427,346	353,926	73,420	20.7%
7	Total Operating Revenue	3,020,416	2,442,123	2,898,116	(455,993)	-15.7%	11,165,409	9,777,223	12,318,739	(2,541,516)	-20.6%
8	Total Expenses	3,206,134	3,533,697	3,517,927	15,771	0.4%	12,366,264	13,473,558	14,093,869	(620,311)	-4.4%
9	% Expenses	64%	66%	63%			58%	60%	60%		
10	Surplus (Loss) from Operations	(185,718)	(1,091,574)	(619,810)	(471,764)	-76.1%	(1,200,856)	(3,696,335)	(1,775,130)	(1,921,205)	-108.2%
11	% Operating margin	-4%	-20%	-11%			-6%	-17%	-8%		
12	Total Non-operating	238,284	779,734	696,000	83,733	12.0%	1,584,617	2,532,759	2,784,001	(251,243)	-9.0%
13	Surplus/(Loss)	52,566	(311,840)	76,190	(388,030)	509.3%	383,761	(1,163,576)	1,008,872	(2,172,448)	215.3%
14	% Total margin	1%	-6%	1%			2%	-5%	4%		

**BALANCE SHEET**

		A	B	C	D	E
		October	October	September	VARIANCE	
		FY 23/24	FY 24/25	FY 24/25	Amount	%
15	Gross Accounts Receivables	10,414,199	13,051,469	13,484,606	(433,137)	-3.2%
16	Net Accounts Receivables	3,302,660	4,264,378	4,267,543	(3,165)	-0.1%
17	% Net AR to Gross AR	32%	33%	32%		
18	Days Gross AR	62.1	75.4	71.5	4.0	5.6%
19	Cash Collections	2,499,947.7	2,301,414	2,511,208	(209,794)	-8.4%
21	Investments and Board Designated Funds	40,888,785	40,373,142	40,373,142	-	0.0%
22	Cash on hand	2,775,657	1,673,924	2,281,052	(607,128)	-26.6%
23	Total Cash & Invest	43,664,442	42,047,066	42,654,194	(607,128)	-1.4%
24	Days Cash & Invest	446	379	396	(17)	-4.3%
	Total Cash and Investments	43,664,442	42,047,066	42,654,194		
	Increase Current Year vs. Prior Year		(1,617,376)			

**Statement of Operations**

		A	B	C	D	E	F	G	H	I	J
		Current Month					Year-to-Date				
		FY 23/24	FY 24/25		VARIANCE		FY 23/24	FY 24/25		VARIANCE	
		Actual	Actual	Budget	Amount	%	Actual	Actual	Budget	Amount	%
<b>Gross Patient Revenue</b>											
1	Inpatient	457,697	474,566	613,494	(138,927)	-22.6%	1,610,532	1,811,319	2,365,541	(554,222)	-23.4%
2	Outpatient	948,398	1,132,094	985,547	146,547	14.9%	3,701,300	4,167,338	3,946,415	220,923	5.6%
3	Clinic Revenue	278,391	379,501	291,396	88,106	30.2%	1,130,291	1,377,394	1,179,854	197,540	16.7%
4	Emergency Room	2,886,971	2,950,438	3,229,714	(279,276)	-8.6%	13,157,099	13,406,887	14,430,108	(1,023,221)	-7.1%
5	Skilled Nursing Facility	443,466	434,209	430,437	3,772	0.9%	1,599,591	1,586,554	1,709,131	(122,577)	-7.2%
6	<b>Total patient revenue</b>	<b>5,014,923</b>	<b>5,370,808</b>	<b>5,550,587</b>	<b>(179,779)</b>	<b>-3.2%</b>	<b>21,198,814</b>	<b>22,349,491</b>	<b>23,631,050</b>	<b>(1,281,558)</b>	<b>-5.4%</b>
<b>Revenue Deductions</b>											
7	Contractual Allow	1,898,456	2,713,778	2,378,344	335,433	14.1%	9,434,653	11,415,681	10,122,393	1,293,288	12.8%
8	Contractual Allow PY	-	-	-	-	#DIV/0!	-	-	-	-	#DIV/0!
9	Charity Care	69	2,654	15,154	(12,500)	-82.5%	96,342	152,095	64,498	87,597	135.8%
10	Administrative	(1,399)	93,848	15,005	78,843	525.4%	5,128	289,227	63,864	225,363	352.9%
11	Policy Discount	9,366	12,474	22,304	(9,830)	-44.1%	41,825	48,577	94,927	(46,350)	-48.8%
12	Employee Discount	4,737	6,646	15,217	(8,571)	-56.3%	26,217	25,969	64,765	(38,796)	-59.9%
13	Bad Debts	23,350	182,059	221,502	(39,443)	-17.8%	217,156	412,180	942,726	(530,546)	-56.3%
14	Denials	104,327	73,372	73,557	(185)	-0.3%	401,907	655,886	313,064	342,822	109.5%
15	<b>Total revenue deductions</b>	<b>2,084,385</b>	<b>3,084,830</b>	<b>2,741,083</b>	<b>343,747</b>	<b>12.5%</b>	<b>10,223,228</b>	<b>12,999,614</b>	<b>11,666,236</b>	<b>1,333,377</b>	<b>11.4%</b>
16	<b>Net Patient Revenue</b>	<b>2,930,538</b>	<b>2,285,978</b>	<b>2,809,504</b>	<b>(523,527)</b>	<b>-18.6%</b>	<b>10,975,586</b>	<b>9,349,877</b>	<b>11,964,813</b>	<b>(2,614,936)</b>	<b>-21.9%</b>
	revenue including Prior Year adjustment	41.6%	57.4%	49.4%	8.1%		48.2%	58.2%	49.4%	8.8%	
										0.0%	
17	<b>Other Revenue</b>	89,878	156,145	88,612	67,533	76.2%	189,823	427,346	353,926	73,420	20.7%
18	<b>Total Operating Revenue</b>	<b>3,020,416</b>	<b>2,442,123</b>	<b>2,898,116</b>	<b>(455,993)</b>	<b>-15.7%</b>	<b>11,165,409</b>	<b>9,777,223</b>	<b>12,318,739</b>	<b>(2,541,516)</b>	<b>-20.6%</b>
<b>Expenses</b>											
19	Salaries	1,300,784	1,526,254	1,531,256	(5,002)	-0.3%	5,034,698	5,652,212	6,076,886	(424,675)	-7.0%
20	Employee Benefits	441,934	486,211	519,590	(33,379)	-6.4%	1,693,093	1,983,958	2,073,380	(89,422)	-4.3%
21	Registry	118,087	107,449	69,669	37,780	54.2%	462,846	420,963	296,305	124,658	42.1%
22	Salaries and Benefits	<b>1,860,805</b>	<b>2,119,913</b>	<b>2,120,515</b>	<b>(602)</b>	<b>0.0%</b>	<b>7,190,637</b>	<b>8,057,133</b>	<b>8,446,571</b>	<b>(389,438)</b>	<b>-4.6%</b>
23	Professional fees	218,219	273,757	295,618	(21,861)	-7.4%	779,216	1,065,612	1,176,889	(111,277)	-9.5%
24	Supplies	178,874	194,220	200,234	(6,014)	-3.0%	786,832	832,453	826,040	6,413	0.8%
25	Utilities	49,960	52,093	57,233	(5,140)	-9.0%	205,941	218,945	231,958	(13,013)	-5.6%
26	Repairs and Maintenance	52,562	74,871	62,235	12,636	20.3%	242,613	280,118	248,640	31,478	12.7%
27	Purchased Services	502,377	466,708	466,628	80	0.0%	1,874,399	1,794,003	1,901,470	(107,466)	-5.7%
28	Insurance	90,001	106,212	103,607	2,605	2.5%	420,077	428,366	414,428	13,938	3.4%
29	Depreciation	78,149	78,149	67,732	10,417	15.4%	390,745	312,596	270,928	41,668	15.4%
30	Rental and Leases	20,430	27,651	22,689	4,962	21.9%	82,286	93,549	90,756	2,793	3.1%
32	Dues and Subscriptions	29,820	13,440	17,532	(4,092)	-23.3%	60,394	70,903	70,145	758	1.1%
33	Other Expense	124,939	126,683	103,904	22,779	21.9%	333,124	319,880	416,044	(96,163)	-23.1%
34	<b>Total Expenses</b>	<b>3,206,134</b>	<b>3,533,697</b>	<b>3,517,927</b>	<b>15,771</b>	<b>0.4%</b>	<b>12,366,264</b>	<b>13,473,558</b>	<b>14,093,869</b>	<b>(620,311)</b>	<b>-4.4%</b>
35	<b>Surplus (Loss) from Operations</b>	<b>(185,718)</b>	<b>(1,091,574)</b>	<b>(619,810)</b>	<b>(471,764)</b>	<b>-76.1%</b>	<b>(1,200,856)</b>	<b>(3,696,335)</b>	<b>(1,775,130)</b>	<b>(1,921,205)</b>	<b>-108.2%</b>
<b>Non-Operating Income</b>											
37	Tax Revenue	215,833	229,167	229,167	0	0.0%	863,332	1,038,355	916,667	121,688	13.3%
38	Other non-operating	29,590	556,907	474,167	82,740	17.4%	74,995	1,037,959	1,446,667	(408,708)	-28.3%
	Interest Income	131	618	-	618	#DIV/0!	675,374	486,147	450,000	36,147	8.0%
	Interest Expense	(7,271)	(6,957)	(7,333)	376	-5.1%	(29,085)	(29,702)	(29,332)	(370)	1.3%
	IGT Expense	-	-	-	-	#DIV/0!	-	-	-	-	#DIV/0!
39	<b>Total Non-operating</b>	<b>238,284</b>	<b>779,734</b>	<b>696,000</b>	<b>83,733</b>	<b>12.0%</b>	<b>1,584,617</b>	<b>2,532,759</b>	<b>2,784,001</b>	<b>(251,243)</b>	<b>-9.0%</b>
40	<b>Surplus/(Loss)</b>	<b>52,566</b>	<b>(311,840)</b>	<b>76,190</b>	<b>(388,030)</b>	<b>509.3%</b>	<b>383,761</b>	<b>(1,163,576)</b>	<b>1,008,872</b>	<b>(2,172,448)</b>	<b>215.3%</b>

**Bear Valley Community Healthcare District  
Financial Statements**

**Current Year Trending Statement of Operations**

**A Statement of Operations—CURRENT YEAR 2025**

		1	2	3	4	5	6	7	8	9	10	11	12	
		July	Aug	Sept	Oct	Nov	Dec	Jan	Feb	Mar	Apr	May	June	YTD
<b>Gross Patient Revenue</b>														
1	Inpatient	548,673	501,640	286,439	474,566									1,811,319
2	Outpatient	1,036,654	1,029,143	969,447	1,132,094									4,167,338
3	Clinic	369,463	345,846	282,583	379,501									1,377,394
4	Emergency Room	4,069,032	3,609,764	2,777,653	2,950,438									13,406,887
5	Skilled Nursing Facility	411,287	380,194	360,864	434,209									1,586,554
6	<b>Total patient revenue</b>	<b>6,435,109</b>	<b>5,866,588</b>	<b>4,676,986</b>	<b>5,370,808</b>	-	-	-	-	-	-	-	-	<b>22,349,491</b>
<b>Revenue Deductions</b>		C/A	0.49	0.62	0.41	0.51	#DIV/0!	#DIV/0!	#DIV/0!	#DIV/0!	#DIV/0!	#DIV/0!	#DIV/0!	0.51
7	Contractual Allow	3,157,029	3,628,721	1,916,154	2,713,778									11,415,681
8	Contractual Allow PY	-												-
9	Charity Care	-	130,055	19,387	2,654									152,095
10	Administrative	136,547	30,025	28,806	93,848									289,227
11	Policy Discount	10,047	14,347	11,708	12,474									48,577
12	Employee Discount	7,983	7,545	3,795	6,646									25,969
13	Bad Debts	179,539	(189,644)	240,226	182,059									412,180
14	Denials	186,795	281,494	114,225	73,372									655,886
15	<b>Total revenue deductions</b>	<b>3,677,939</b>	<b>3,902,543</b>	<b>2,334,302</b>	<b>3,084,830</b>	-	-	-	-	-	-	-	-	<b>12,999,614</b>
16	<b>Net Patient Revenue</b>	<b>2,757,170</b>	<b>1,964,045</b>	<b>2,342,684</b>	<b>2,285,978</b>	-	-	-	-	-	-	-	-	<b>9,349,877</b>
	net / tot pat rev	42.8%	33.5%	50.1%	42.6%	#DIV/0!	#DIV/0!	#DIV/0!	#DIV/0!	#DIV/0!	#DIV/0!	#DIV/0!	#DIV/0!	41.8%
		2.9%	4.8%	2.4%	1.4%	#DIV/0!	#DIV/0!	#DIV/0!	#DIV/0!	#DIV/0!	#DIV/0!	#DIV/0!	#DIV/0!	2.9%
17	<b>Other Revenue</b>	<b>70,254</b>	<b>73,692</b>	<b>127,255</b>	<b>156,145</b>									<b>427,346</b>
18	<b>Total Operating Revenue</b>	<b>2,827,424</b>	<b>2,037,737</b>	<b>2,469,939</b>	<b>2,442,123</b>	-	-	-	-	-	-	-	-	<b>9,777,223</b>
<b>Expenses</b>														
19	Salaries	1,201,654	1,668,615	1,255,689	1,526,254									5,652,212
20	Employee Benefits	444,548	582,963	470,237	486,211									1,983,958
21	Registry	99,973	119,575	93,966	107,449									420,963
22	Salaries and Benefits	1,746,174	2,371,153	1,819,892	2,119,913	-	-	-	-	-	-	-	-	8,057,133
23	Professional fees	234,004	300,107	257,745	273,757									1,065,612
24	Supplies	205,156	208,669	224,409	194,220									832,453
25	Utilities	62,144	46,153	58,555	52,093									218,945
26	Repairs and Maintenance	64,539	75,161	65,547	74,871									280,118
27	Purchased Services	437,767	399,488	490,040	466,708									1,794,003
28	Insurance	108,112	106,836	107,206	106,212									428,366
29	Depreciation	78,149	78,149	78,149	78,149									312,596
30	Rental and Leases	17,135	24,134	24,629	27,651									93,549
32	Dues and Subscriptions	20,633	20,467	16,363	13,440									70,903
33	Other Expense	46,821	70,319	76,057	126,683									319,880
34	<b>Total Expenses</b>	<b>3,020,634</b>	<b>3,700,637</b>	<b>3,218,590</b>	<b>3,533,697</b>	-	-	-	-	-	-	-	-	<b>13,473,558</b>
35	<b>Surplus (Loss) from Operations</b>	<b>(193,209)</b>	<b>(1,662,900)</b>	<b>(748,651)</b>	<b>(1,091,574)</b>	-	-	-	-	-	-	-	-	<b>(3,696,335)</b>
36	<b>Non-Operating Income</b>													
37	Tax Revenue	350,855	229,167	229,167	229,167									1,038,355
38	Other non-operating	319,388	9,108	152,556	556,907									1,037,959
	Interest Income	772	211	484,545	618									486,147
	Interest Expense	(8,418)	(7,243)	(7,083)	(6,957)									(29,702)
	IGT Expense													-
39	<b>Total Non-operating</b>	<b>662,597</b>	<b>231,243</b>	<b>859,185</b>	<b>779,734</b>	-	-	-	-	-	-	-	-	<b>2,532,759</b>
40	<b>Surplus/(Loss)</b>	<b>469,388</b>	<b>(1,431,657)</b>	<b>110,534</b>	<b>(311,840)</b>	-	-	-	-	-	-	-	-	<b>(1,163,576)</b>





**Units of Service**  
For the period ending Oct 2024

31

123

**Current Month**

**Bear Valley Community Hospital**

**Year-To-Date**

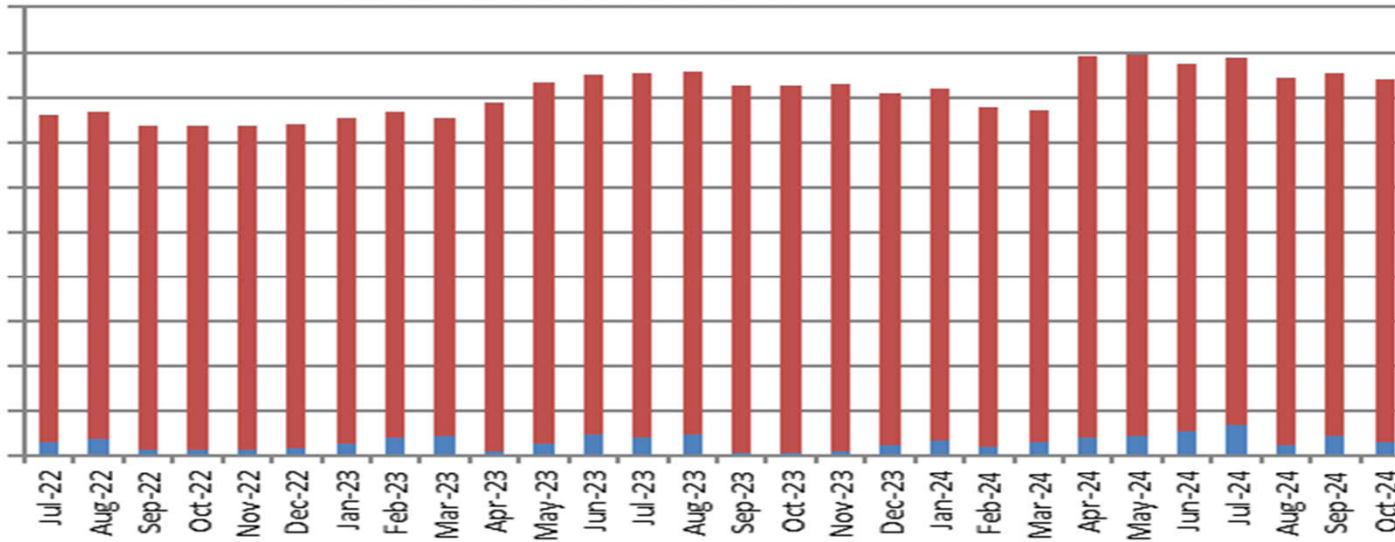
Oct-24		Oct-23	Actual -Budget		Act.-Act.		Oct-24		Oct-23	Actual -Budget		Act.-Act.
Actual	Budget	Actual	Variance	Var %	Var %		Actual	Budget	Actual	Variance	Var %	Var %
110	158	90	(48)	-30.2%	22.2%	Med Surg Patient Days	409	580	283	(171)	-29.4%	44.5%
48	78	104	(30)	-38.1%	-53.8%	Swing Patient Days	141	308	290	(167)	-54.1%	-51.4%
615	605	640	10	1.7%	-3.9%	SNF Patient Days	2,308	2,448	2,304	(140)	-5.7%	0.2%
<b>773</b>	<b>840</b>	<b>834</b>	<b>(67)</b>	<b>-8.0%</b>	<b>-7.3%</b>	<b>Total Patient Days</b>	<b>2,858</b>	<b>3,335</b>	<b>2,877</b>	<b>(477)</b>	<b>-14.3%</b>	<b>-0.7%</b>
31	30	21	1	4.9%	47.6%	Acute Admissions	115	117	86	(2)	-1.9%	33.7%
30	29	4	1	3.9%	650.0%	Acute Discharges	116	115	73	1	1.2%	58.9%
3.7	5.5	22.5	(42.3)	-775.3%	-83.7%	Acute Average Length of Stay	3.5	5.1	3.9	(2)	-30.3%	-9.1%
1.5	2.5	3.4	(0.95)	-38.1%	-53.8%	Swing Average Daily Census	1.1	2.5	2.4	(1.4)	-54.1%	-51.4%
3.5	5.1	2.9	(1.53)	-30.2%	22.2%	Acute Average Daily Census	3.3	4.7	2.3	(1.4)	-29.4%	44.5%
19.8	19.5	20.6	0.3	1.7%	-3.9%	SNFAvg Daily Census	18.8	19.9	18.7	(1.1)	-5.7%	0.2%
<b>24.9</b>	<b>27.1</b>	<b>26.9</b>	<b>(2.2)</b>	<b>-8.0%</b>	<b>-7.3%</b>	<b>Total Avg. Daily Census</b>	<b>23.2</b>	<b>27.1</b>	<b>23.4</b>	<b>(3.9)</b>	<b>-14.3%</b>	<b>-0.7%</b>
<b>55.4%</b>	<b>60.2%</b>	<b>59.8%</b>	<b>-5%</b>	<b>-8.0%</b>	<b>-7.3%</b>	<b>% Occupancy</b>	<b>51.6%</b>	<b>60.3%</b>	<b>52.0%</b>	<b>-9%</b>	<b>-14.3%</b>	<b>-0.7%</b>
32	18	20	14	79.6%	60.0%	Emergency Room Admitted	113	86	80	27	31.5%	41.3%
769	820	794	(51)	-6.2%	-3.1%	Emergency Room Discharged	3,460	3,952	3,782	(492)	-12.4%	-8.5%
<b>801</b>	<b>838</b>	<b>814</b>	<b>(37)</b>	<b>-4.4%</b>	<b>-1.6%</b>	<b>Emergency Room Total</b>	<b>3,573</b>	<b>4,038</b>	<b>3,862</b>	<b>(465)</b>	<b>-11.5%</b>	<b>-7.5%</b>
<b>26</b>	<b>27</b>	<b>26</b>	<b>(1)</b>	<b>-4.4%</b>	<b>-1.6%</b>	<b>ER visits per calendar day</b>	<b>29</b>	<b>33</b>	<b>31</b>	<b>(4)</b>	<b>-11.5%</b>	<b>-7.5%</b>
<b>103.2%</b>	<b>60.3%</b>	<b>95.2%</b>	<b>10%</b>	<b>16.9%</b>	<b>8.4%</b>	<b>% Admits from ER</b>	<b>98.3%</b>	<b>73.3%</b>	<b>93.0%</b>	<b>-8%</b>	<b>-11.4%</b>	<b>5.6%</b>
3	5	-	(2)	0.0%	#DIV/0!	Surgical Procedures I/P	9	18	-	(9)	0.0%	#DIV/0!
10	21	13	(11)	-51.9%	-23.1%	Surgical Procedures O/P	55	77	39	(22)	-28.4%	41.0%
<b>13</b>	<b>26</b>	<b>13</b>	<b>(13)</b>	<b>-49.6%</b>	<b>0.0%</b>	<b>TOTAL Procedures</b>	<b>64</b>	<b>95</b>	<b>39</b>	<b>(31)</b>	<b>-32.5%</b>	<b>64.1%</b>

Units of Service For the period ending Oct 2024													
Current Month						Bear Valley Community Hospital						Year-To-Date	
Oct-24		Oct-23	Actual -Budget		Act.-Act.	Oct-24		Oct-23	Actual -Budget		Act.-Act.		
Actual	Budget	Actual	Variance	Var %	Var %	Actual	Budget	Actual	Variance	Var %	Var %		
6,897	6,460	5,969	437	6.8%	15.5%		Lab Procedures	26,872	26,641	24,983	231	0.9%	7.6%
653	715	678	(62)	-8.7%	-3.7%		X-Ray Procedures	2,824	3,177	3,028	(353)	-11.1%	-6.7%
427	409	371	18	4.4%	15.1%		C.T. Scan Procedures	1,695	1,706	1,596	(11)	-0.6%	6.2%
200	162	191	38	23.5%	4.7%		Ultrasound Procedures	681	656	679	25	3.8%	0.3%
73	57	94	16	27.3%	-22.3%		Mammography Procedures	217	227	263	(10)	-4.6%	-17.5%
299	285	285	14	4.9%	4.9%		EKG Procedures	1,185	1,224	1,224	(39)	-3.2%	-3.2%
103	96	100	7	7.3%	3.0%		Respiratory Procedures	392	397	362	(5)	-1.3%	8.3%
2,632	2,892	2,463	(260)	-9.0%	6.9%		Physical Therapy Procedures	10,048	9,796	10,024	252	2.6%	0.2%
2,212	1,704	1,347	508	29.8%	64.2%		Primary Care Clinic Visits	7,898	6,848	6,083	1,050	15.3%	29.8%
331	270	264	61	22.6%	25.4%		Specialty Clinic Visits	1,222	1,055	1,088	167	15.8%	12.3%
<b>2,543</b>	<b>1,974</b>	<b>1,611</b>	<b>569</b>	<b>28.8%</b>	<b>57.9%</b>		<b>Clinic</b>	<b>9,120</b>	<b>7,903</b>	<b>7,171</b>	<b>1,217</b>	<b>15.4%</b>	<b>27.2%</b>
<b>82</b>	<b>64</b>	<b>52</b>	<b>18</b>	<b>28.8%</b>	<b>57.9%</b>		<b>Clinic visits per work day</b>	<b>74</b>	<b>64</b>	<b>58</b>	<b>10</b>	<b>15.4%</b>	<b>27.2%</b>
17.6%	15.00%	18.30%	2.60%	17.33%	-3.83%		% Medicare Revenue	14.53%	15.00%	15.83%	-0.48%	-3.17%	-8.21%
46.40%	37.00%	42.30%	9.40%	25.41%	9.69%		% Medi-Cal Revenue	44.63%	37.00%	40.00%	7.63%	20.61%	11.56%
32.80%	43.00%	35.50%	-10.20%	-23.72%	-7.61%		% Insurance Revenue	37.28%	43.00%	41.73%	-5.73%	-13.31%	-10.67%
3.20%	3.50%	3.90%	-0.30%	-8.57%	-17.95%		% Self-Pay Revenue	3.58%	3.50%	3.23%	0.08%	2.14%	10.85%
190.1	192.2	179.9	(2.0)	-1.1%	5.7%		Productive FTE's	190.1	192.2	181.1	(2.0)	-1.1%	5.0%
210.6	213.5	204.6	(2.9)	-1.4%	2.9%		Total FTE's	210.6	213.5	205.3	(2.9)	-1.4%	2.6%



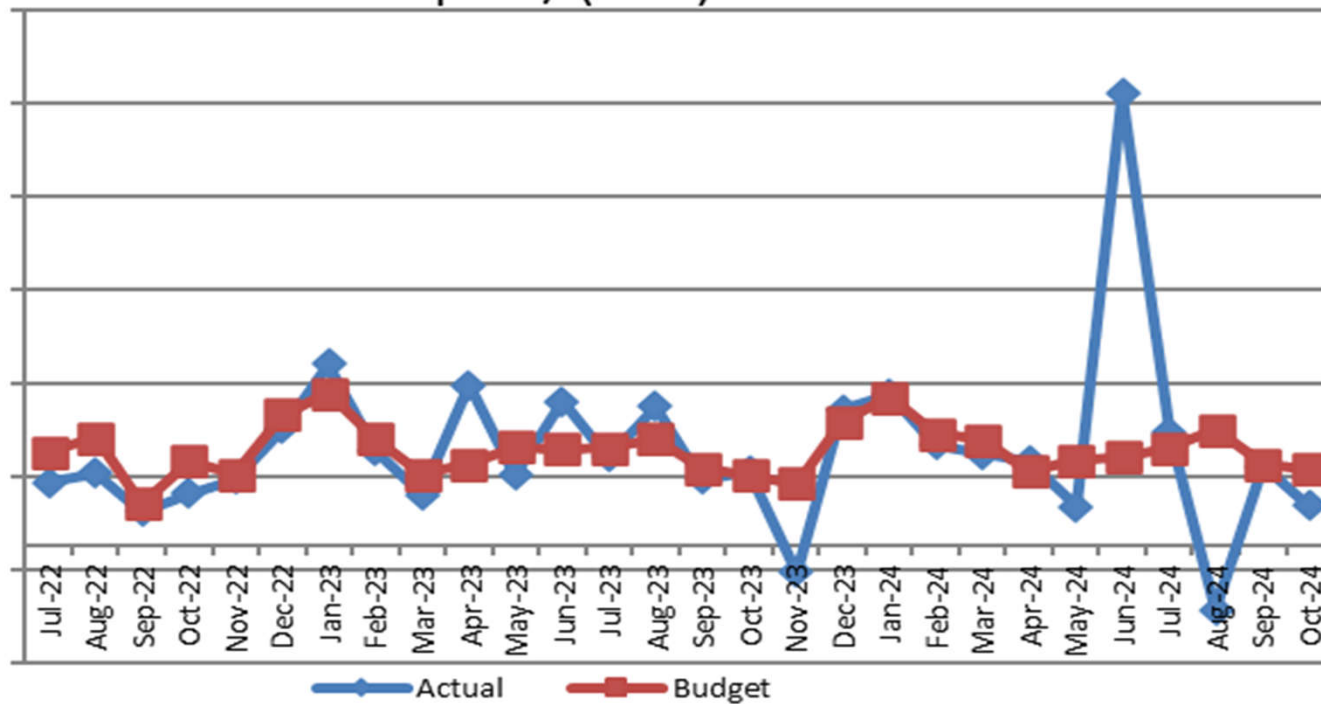
### Cash & Investments

50,000,000  
45,000,000  
40,000,000  
35,000,000  
30,000,000  
25,000,000  
20,000,000  
15,000,000  
10,000,000  
5,000,000  
-

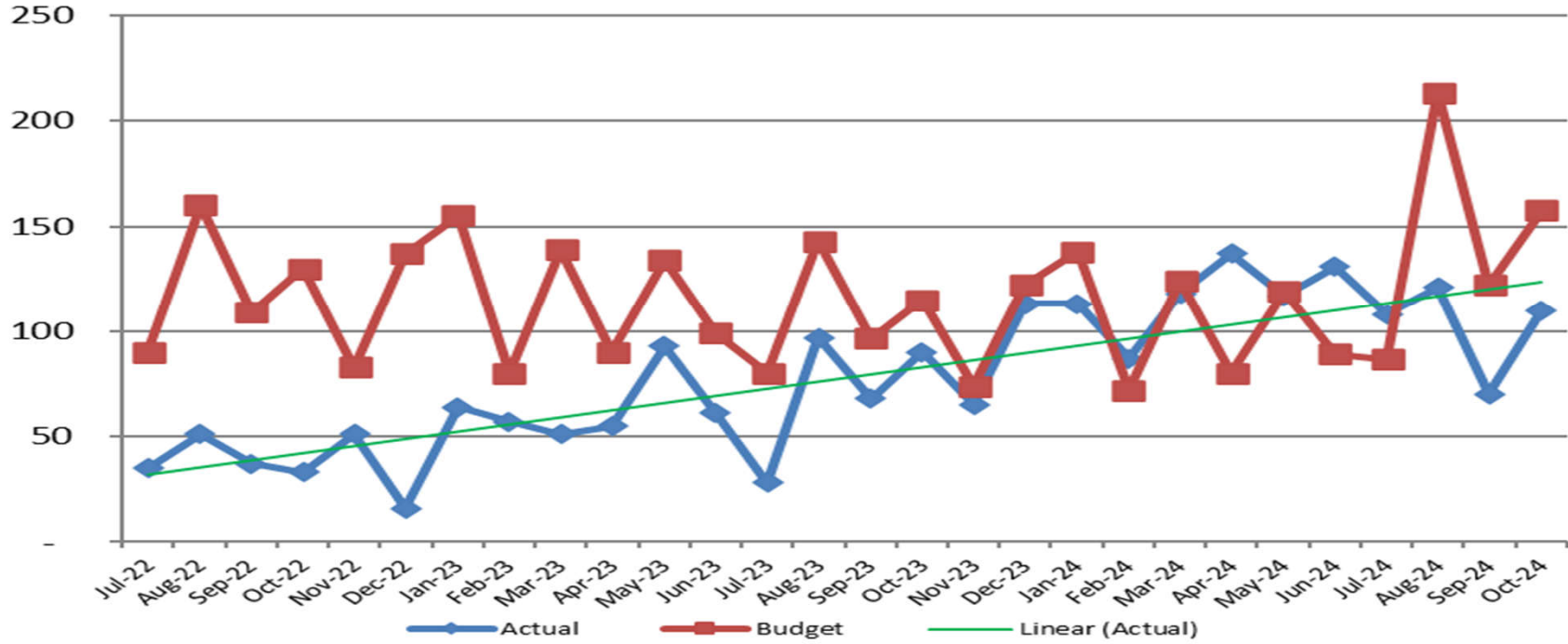


### Surplus / (Loss)

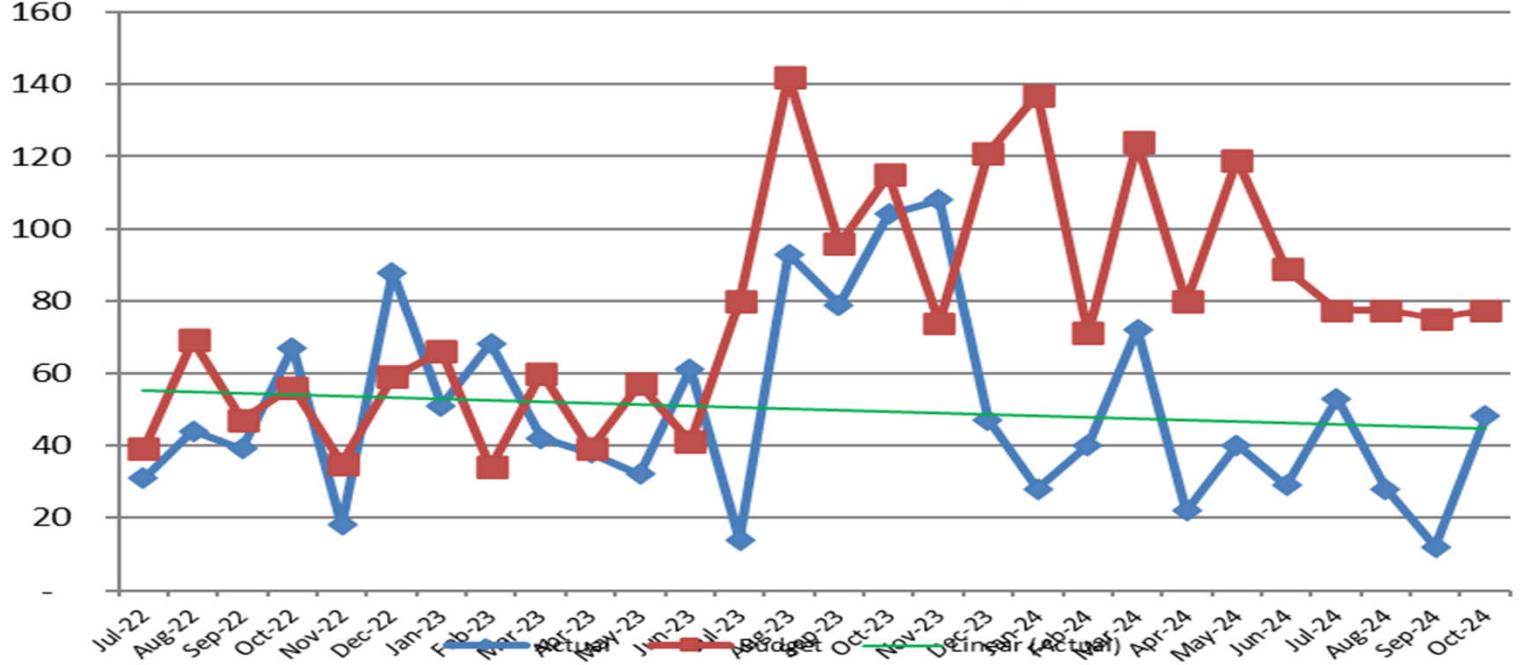
5,000,000  
4,000,000  
3,000,000  
2,000,000  
1,000,000  
-  
(1,000,000)  
(2,000,000)



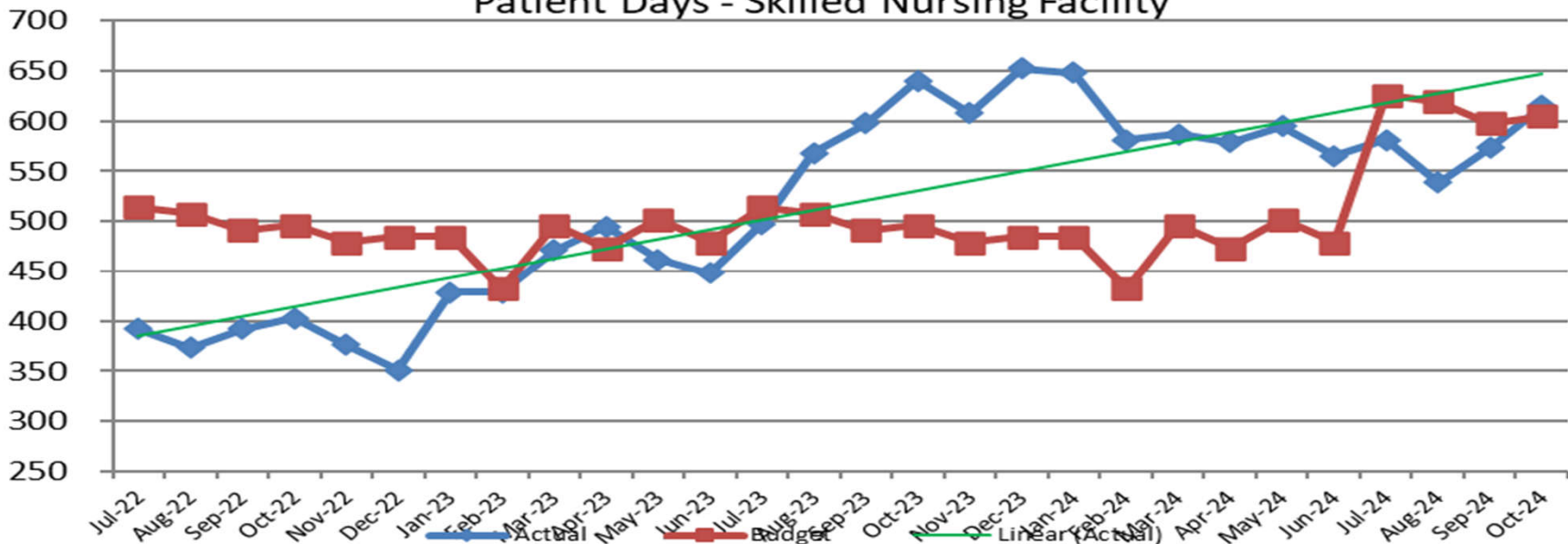
Patient Days - Acute



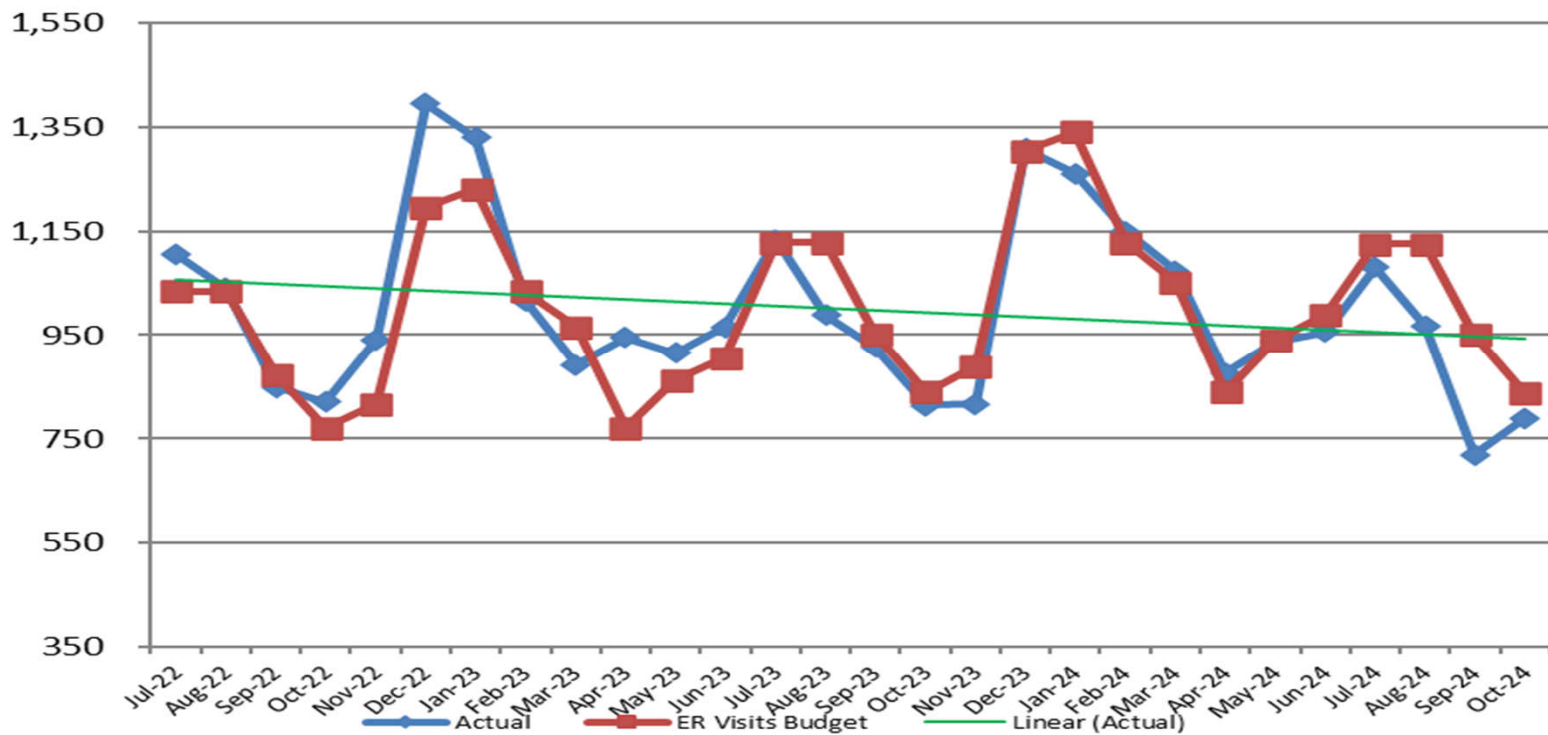
Patient Days - Swing



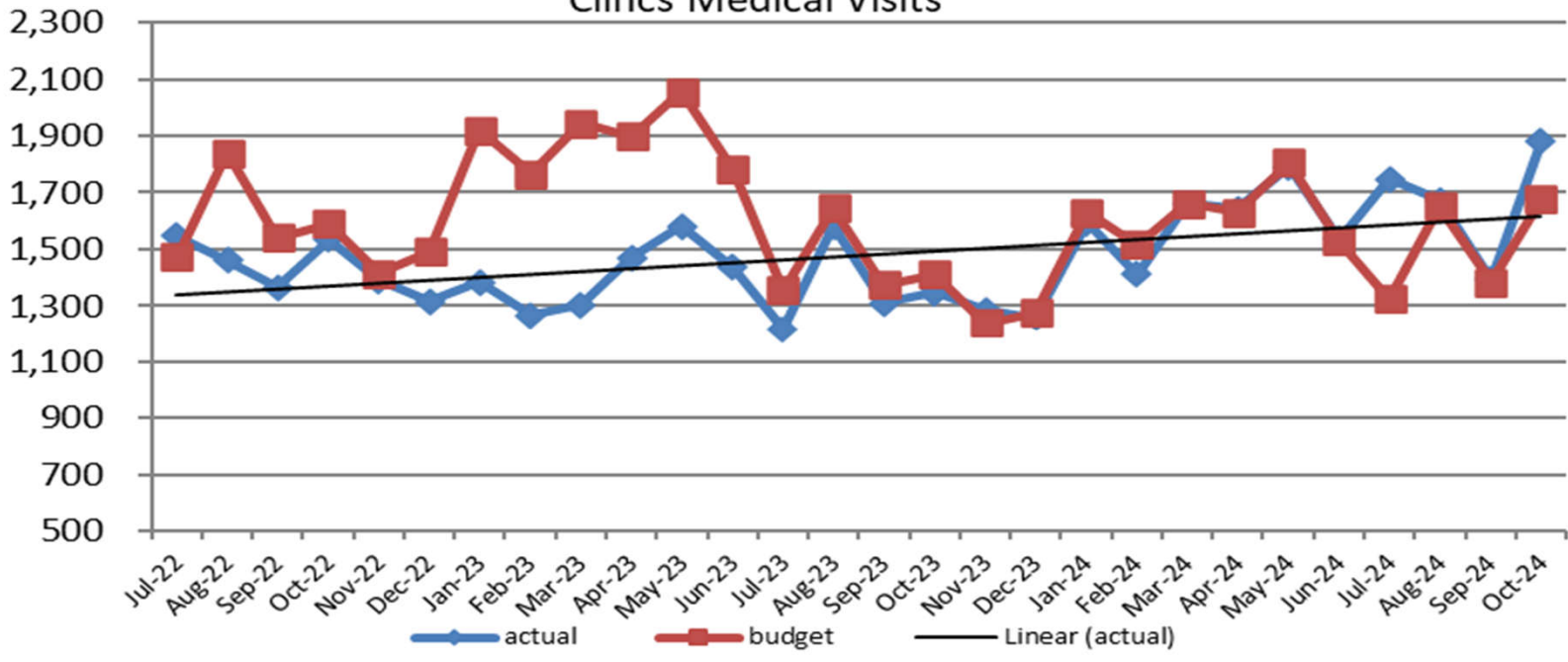
### Patient Days - Skilled Nursing Facility



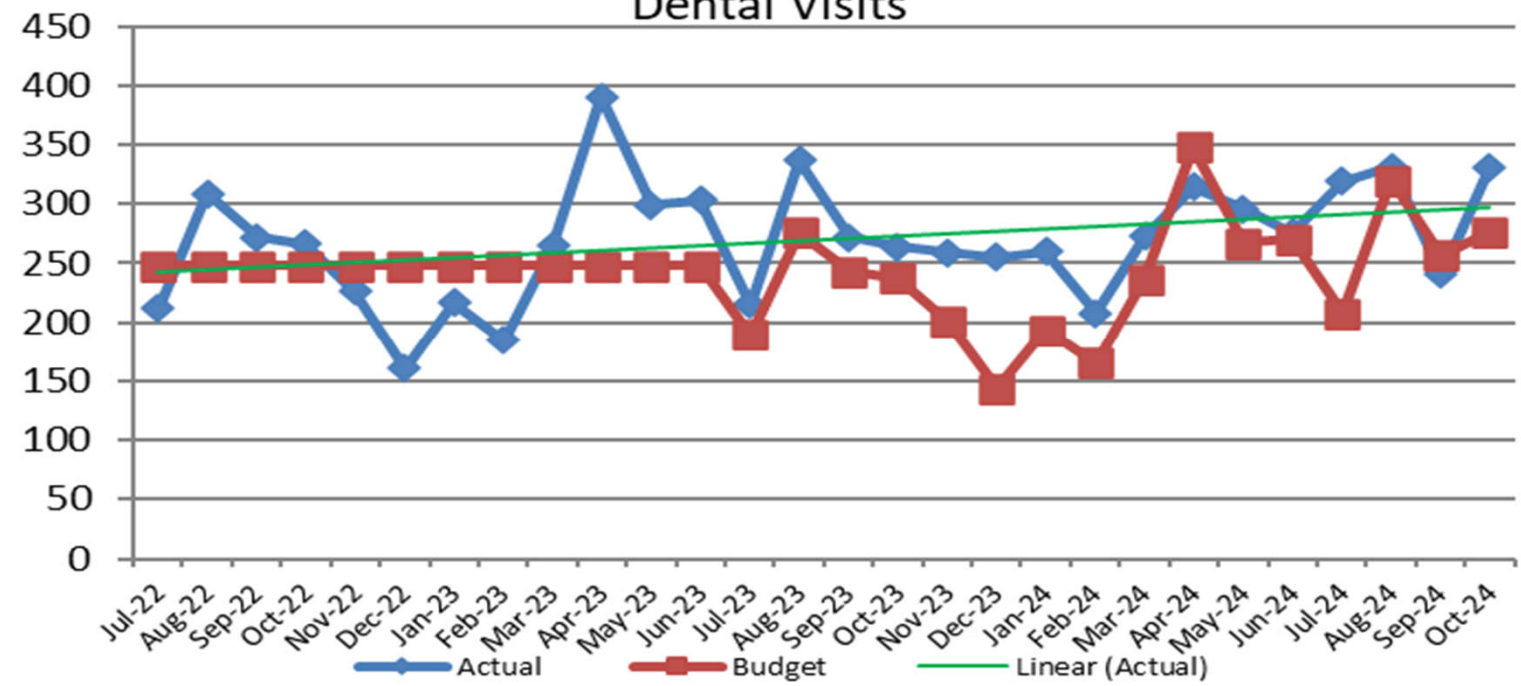
### Emergency Room Visits



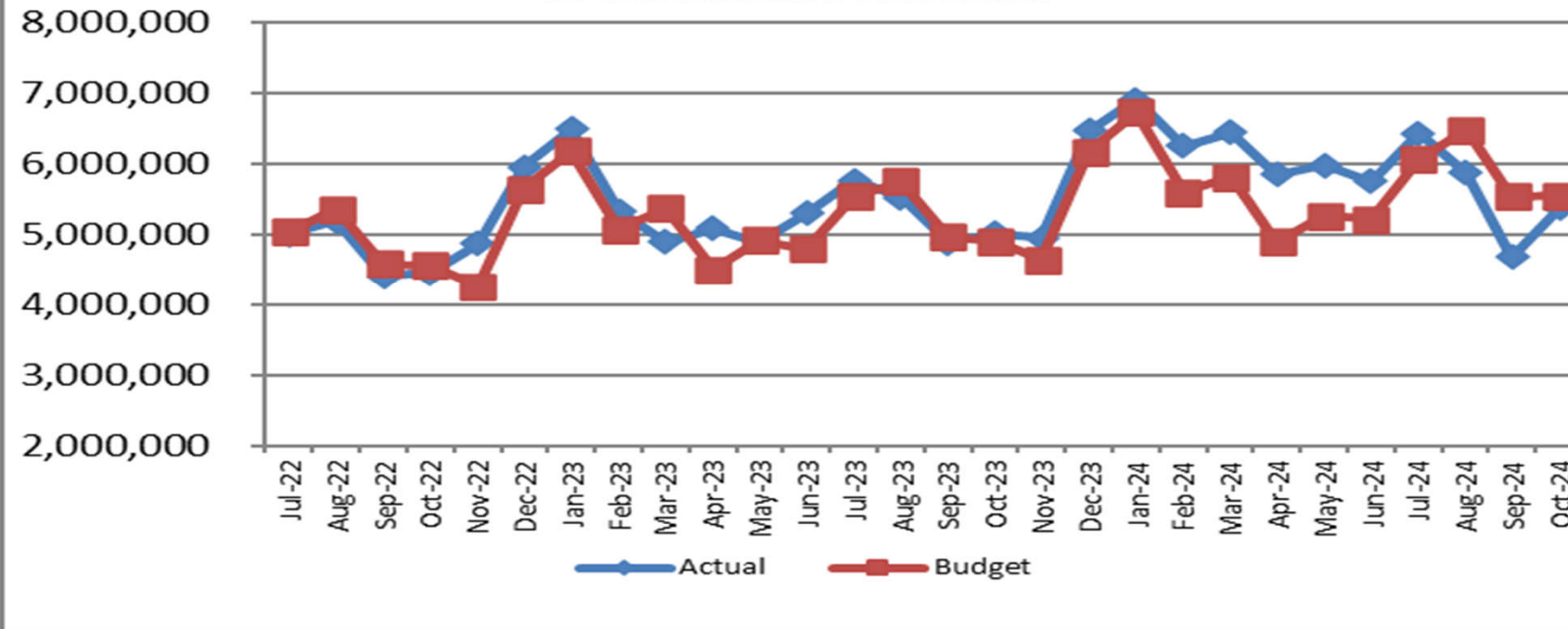
### Clincs Medical Visits



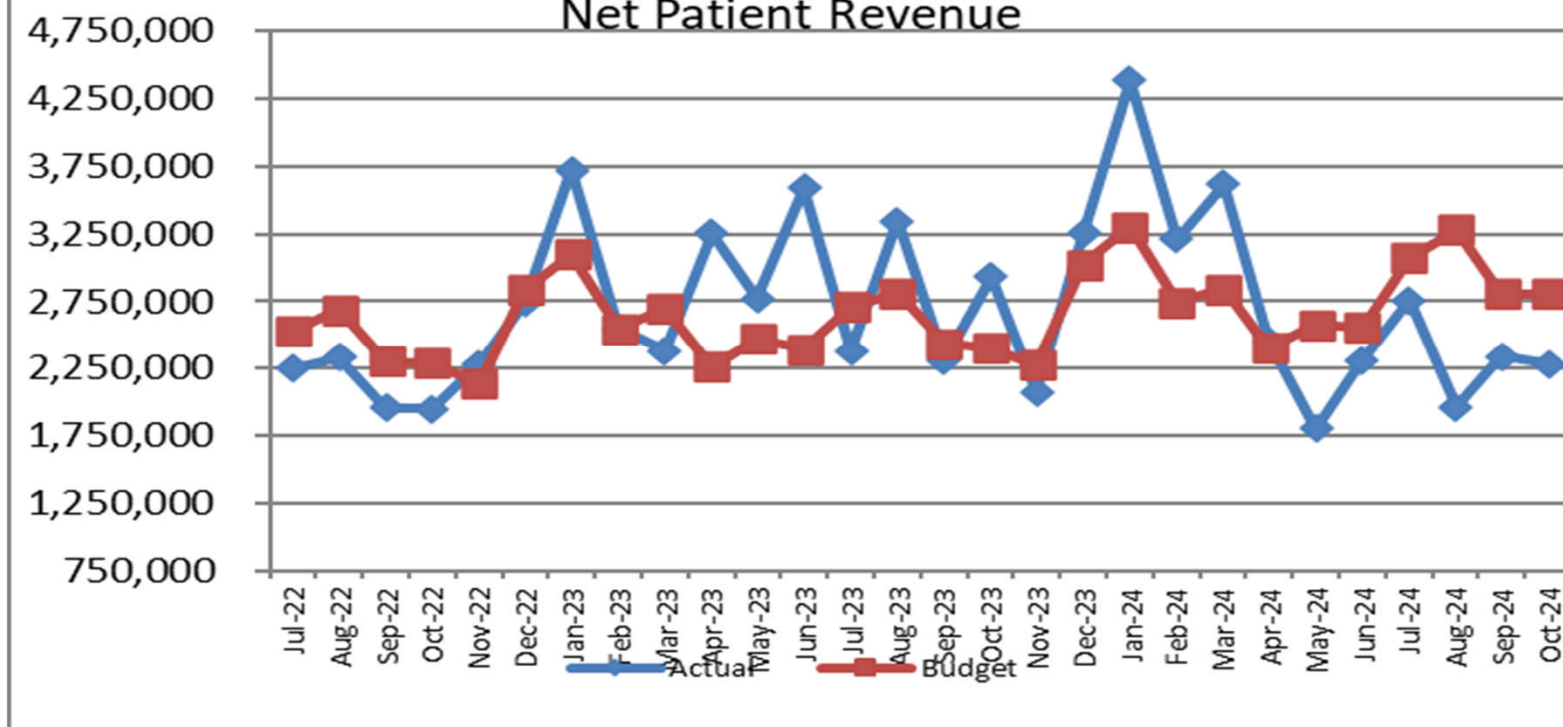
### Dental Visits



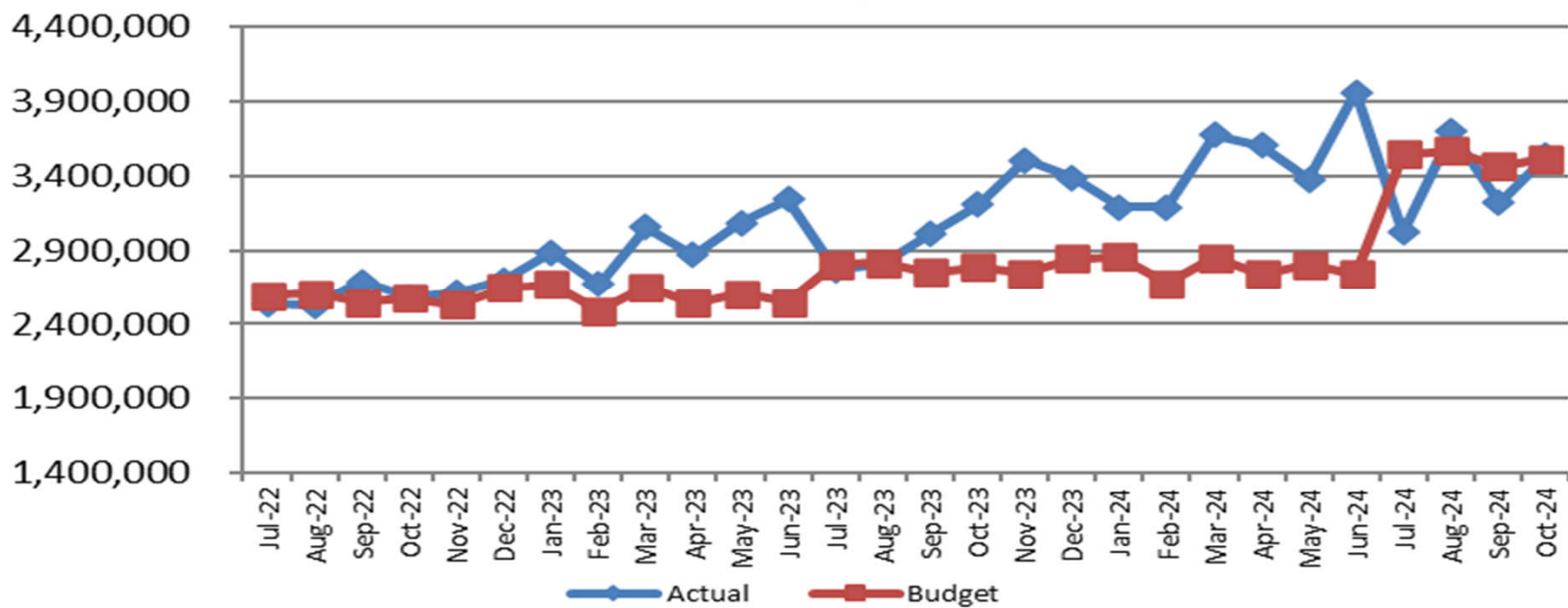
### Gross Patient Revenue



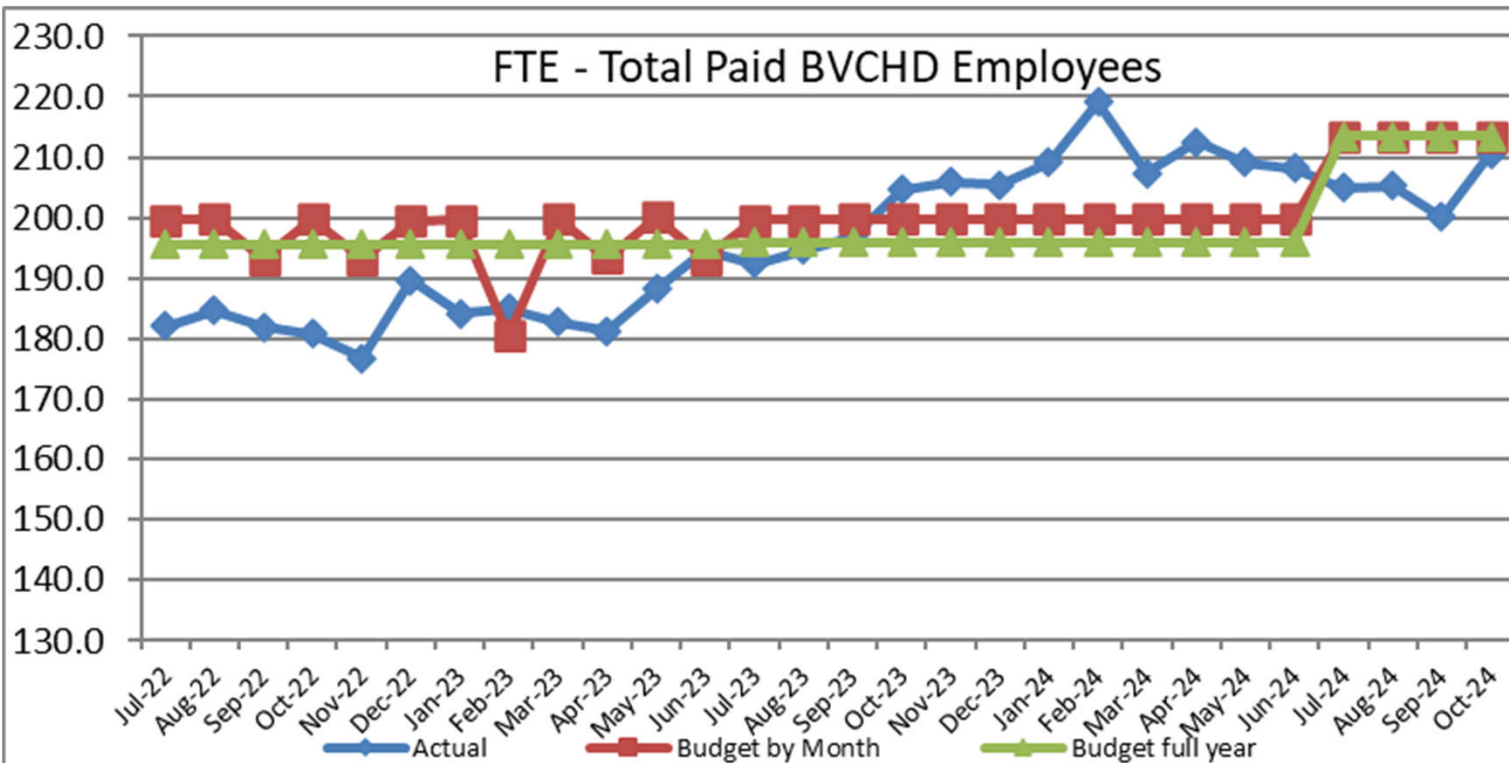
### Net Patient Revenue



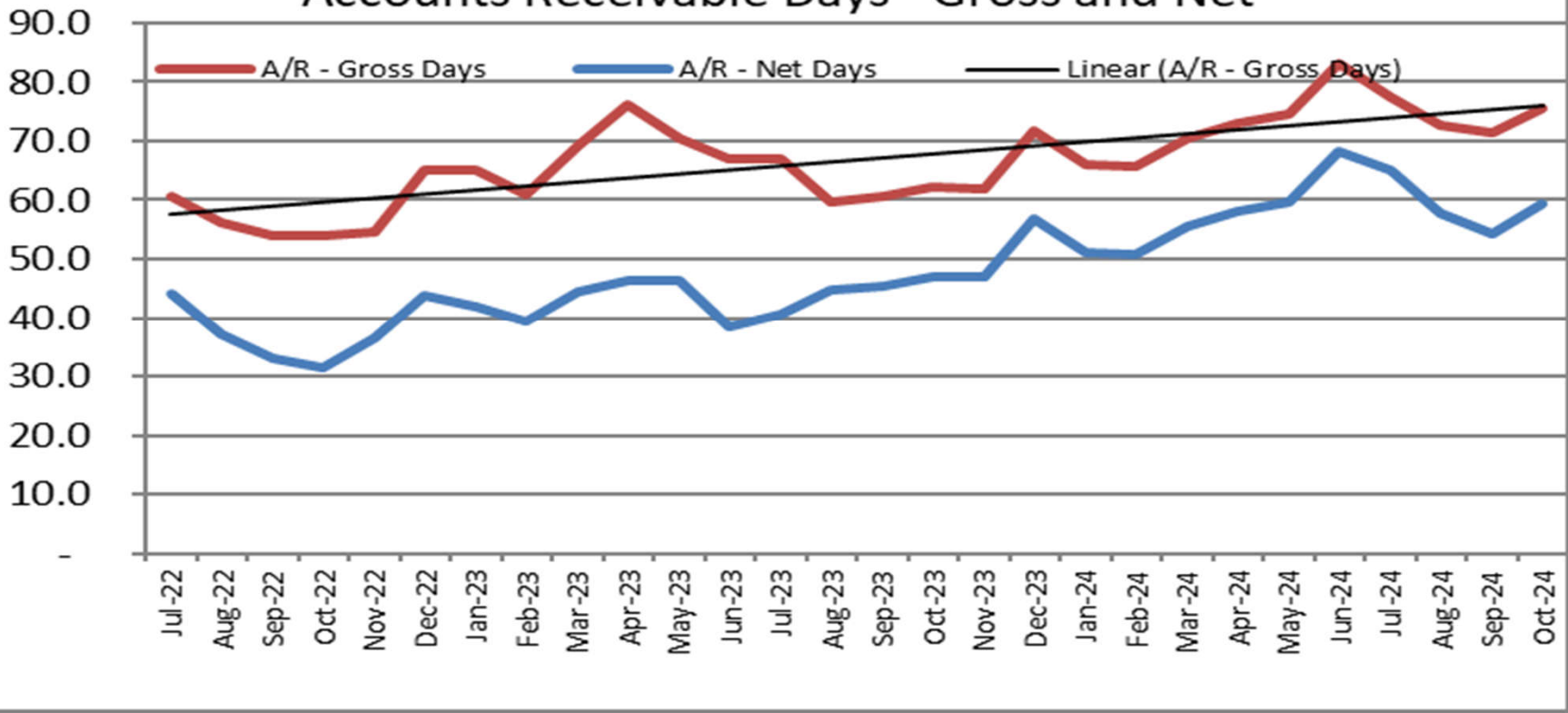
### Total Expenses



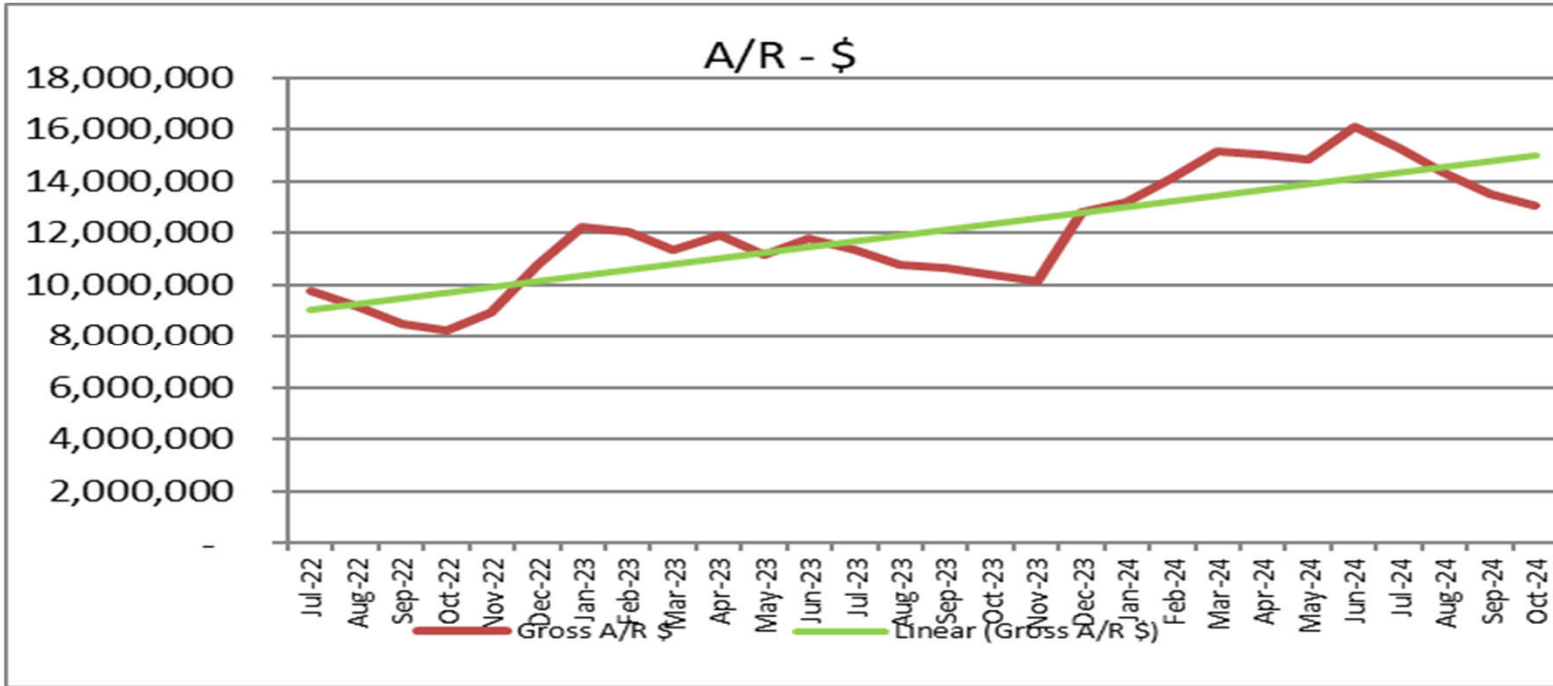
### FTE - Total Paid BVCHD Employees



## Accounts Receivable Days - Gross and Net



## A/R - \$





Finance Report  
October 2024 Results



## Summary for October 2024

- Cash on hand \$ 2,301,414
- Investments \$ 15,373,142
- Board Designated Funds \$ 25,000,000
- Days Cash on hand, including investments with LAIF – 379
- Operating **Loss** for the month of \$1,091,574 vs projected loss of \$619,810
- Total **Loss** of \$311,840 (vs a budget of \$76,190 surplus)
- Total Patient Revenue was 3.2% lower than Budget for the month
- Revenue deductions were at 57% of total revenue (12.5% higher than budget)
- Net Patient Revenue was 18.6% less than budget
- Total Expenses were 0.4% lower than budget



## October 2024 Financial Results

### **Key Statistics**

Total Patient Days were less than budget (773 vs 840). Our Acute and Swing average daily census was 5.2. Emergency Room visits did not exceed the monthly target (801 vs 838). Surgical procedures were below the monthly target (13 vs 26). Primary care visits were higher than projected (2,212 vs 1,704) as were specialty clinic visits (331 vs 270). Both primary care and specialty clinic visits exceed their year to date targets by 1,050 and 167 visits respectively. Lab (6,897 vs 6,460) and Imaging (combined modalities of 1,353 vs 1,343) exceeded budgeted targets with only X-ray falling short of its monthly target by 62.

### **Financial Highlights**

Overall revenues for the month (\$5,370,808 vs \$5,550,587) was just shy of target with shortfalls in Inpatient (\$138,927) and Emergency Services (\$279,276).

Total Revenue Deductions were 12.5% higher than budget for the month (at 57.4% of gross revenue). A slightly higher percentage of revenue for Medicare (17.6% vs 15.0%) and Medical (46.4% vs 37.0%) caused larger contractual allowances in these areas. While total gross accounts receivable did decrease to just over \$13 million, days in accounts receivable did climb to 75.4.

Total Expenses were slightly exceeded the current month target (\$16K). The main areas of variance included Salaries and Benefits including registry (under by \$602) which included benefits that were less than budget and Registry costs which exceeded budget (by \$38K), Professional fees (under by \$22K), Supplies (under by \$6K), Utilities (under by \$5K), Repairs and Maintenance (over by \$13K), Rental and Leases (over by \$5K), Dues and Subscriptions (under by \$4K), and Other Expenses (over by \$23K).

While salaries and benefits were under our budget projection, Registry (non-employed RN staff) did increase by exceed the target for the month (\$107K vs \$70K). Both Salaries (by \$425K) and Benefits (by \$89K) are under their projections for the first four months of this fiscal year while Registry costs have exceeded their year-to-date target (by \$125K). The primary reason for the overage in repairs and maintenance was related to Radiology equipment repairs which were just over \$12K. Other expenses included some minor equipment for various departments (replacement washers and dryers, floor scrubbers, utility carts and a pressure washer for Environmental services; replacement carbon filters for Plant; an updated copy machine for the FHC; various expenses related to our Fall



Festival event; additional marketing related to Measure U as well as settlement/attorney fees related to the parcel tax issue. With the exception of some funds related to the parcel tax issue, most other items were planned for in the budget this fiscal year.

Full Time Equivalent staffing (for BVCHD employed staff) was at 210.6 vs a current month target of 213.5.

Other non-operating revenue for the month totaled \$779,734 and included county tax revenue (\$229,167), IEHP funding for P4P (pay for performance; \$484K and \$25K) as well as some additional IEHP funds related to physician recruitment (\$37K).

This combination led to a loss from Operations of \$1,091,574 as compared to an expected loss of \$619,810.

Our Total Loss for the month was \$311,840 versus an expected surplus of \$76,190.

On a year to date basis, we have an overall loss of \$1,163,576 as compared to a surplus the previous year of \$383,761.

Our Operating Cash and Investments totaled \$42,047,066 with days of cash on hand of 379 and days in accounts receivable of 75.4.

**Bear Valley Community Healthcare District**  
**Financial Statements October 2024**

**Financial Highlights—Hospital**  
**STATEMENT OF OPERATIONS**

		A	B	C	D	E	F	G	H	I	J
		Current Month					Year-to-Date				
		FY 23/24	FY 24/25		VARIANCE		FY 23/24	FY 24/25		VARIANCE	
		Actual	Actual	Budget	Amount	%	Actual	Actual	Budget	Amount	%
1	Total patient revenue	5,014,923	5,370,808	5,550,587	(179,779)	-3.2%	21,198,814	22,349,491	23,631,050	(1,281,558)	-5.4%
2	Total revenue deductions	2,084,385	3,084,830	2,741,083	343,747	12.5%	10,223,228	12,999,614	11,666,236	1,333,377	11.4%
3	% Deductions	42%	57%	49%			48%	58%	49%		
4	Net Patient Revenue	2,930,538	2,285,978	2,809,504	(523,527)	-18.6%	10,975,586	9,349,877	11,964,813	(2,614,936)	-21.9%
5	% Net to Gross	58%	43%	51%			52%	42%	51%		
6	Other Revenue	89,878	156,145	88,612	67,533	76.2%	189,823	427,346	353,926	73,420	20.7%
7	Total Operating Revenue	3,020,416	2,442,123	2,898,116	(455,993)	-15.7%	11,165,409	9,777,223	12,318,739	(2,541,516)	-20.6%
8	Total Expenses	3,206,134	3,533,697	3,517,927	15,771	0.4%	12,366,264	13,473,558	14,093,869	(620,311)	-4.4%
9	% Expenses	64%	66%	63%			58%	60%	60%		
10	Surplus (Loss) from Operations	(185,718)	(1,091,574)	(619,810)	(471,764)	-76.1%	(1,200,856)	(3,696,335)	(1,775,130)	(1,921,205)	-108.2%
11	% Operating margin	-4%	-20%	-11%			-6%	-17%	-8%		
12	Total Non-operating	238,284	779,734	696,000	83,733	12.0%	1,584,617	2,532,759	2,784,001	(251,243)	-9.0%
13	Surplus/(Loss)	52,566	(311,840)	76,190	(388,030)	509.3%	383,761	(1,163,576)	1,008,872	(2,172,448)	215.3%
14	% Total margin	1%	-6%	1%			2%	-5%	4%		

**BALANCE SHEET**

		A	B	C	D	E
		October	October	September	VARIANCE	
		FY 23/24	FY 24/25	FY 24/25	Amount	%
15	Gross Accounts Receivables	10,414,199	13,051,469	13,484,606	(433,137)	-3.2%
16	Net Accounts Receivables	3,302,660	4,264,378	4,267,543	(3,165)	-0.1%
17	% Net AR to Gross AR	32%	33%	32%		
18	Days Gross AR	62.1	75.4	71.5	4.0	5.6%
19	Cash Collections	2,499,947.7	2,301,414	2,511,208	(209,794)	-8.4%
21	Investments and Board Designated Funds	40,888,785	40,373,142	40,373,142	-	0.0%
22	Cash on hand	2,775,657	1,673,924	2,281,052	(607,128)	-26.6%
23	Total Cash & Invest	43,664,442	42,047,066	42,654,194	(607,128)	-1.4%
24	Days Cash & Invest	446	379	396	(17)	-4.3%
	Total Cash and Investments	43,664,442	42,047,066	42,654,194		
	Increase Current Year vs. Prior Year		(1,617,376)			

**Statement of Operations**

		A	B	C	D	E	F	G	H	I	J
		Current Month					Year-to-Date				
		FY 23/24	FY 24/25		VARIANCE		FY 23/24	FY 24/25		VARIANCE	
		Actual	Actual	Budget	Amount	%	Actual	Actual	Budget	Amount	%
<b>Gross Patient Revenue</b>											
1	Inpatient	457,697	474,566	613,494	(138,927)	-22.6%	1,610,532	1,811,319	2,365,541	(554,222)	-23.4%
2	Outpatient	948,398	1,132,094	985,547	146,547	14.9%	3,701,300	4,167,338	3,946,415	220,923	5.6%
3	Clinic Revenue	278,391	379,501	291,396	88,106	30.2%	1,130,291	1,377,394	1,179,854	197,540	16.7%
4	Emergency Room	2,886,971	2,950,438	3,229,714	(279,276)	-8.6%	13,157,099	13,406,887	14,430,108	(1,023,221)	-7.1%
5	Skilled Nursing Facility	443,466	434,209	430,437	3,772	0.9%	1,599,591	1,586,554	1,709,131	(122,577)	-7.2%
6	<b>Total patient revenue</b>	<b>5,014,923</b>	<b>5,370,808</b>	<b>5,550,587</b>	<b>(179,779)</b>	<b>-3.2%</b>	<b>21,198,814</b>	<b>22,349,491</b>	<b>23,631,050</b>	<b>(1,281,558)</b>	<b>-5.4%</b>
<b>Revenue Deductions</b>											
7	Contractual Allow	1,898,456	2,713,778	2,378,344	335,433	14.1%	9,434,653	11,415,681	10,122,393	1,293,288	12.8%
8	Contractual Allow PY	-	-	-	-	#DIV/0!	-	-	-	-	#DIV/0!
9	Charity Care	69	2,654	15,154	(12,500)	-82.5%	96,342	152,095	64,498	87,597	135.8%
10	Administrative	(1,399)	93,848	15,005	78,843	525.4%	5,128	289,227	63,864	225,363	352.9%
11	Policy Discount	9,366	12,474	22,304	(9,830)	-44.1%	41,825	48,577	94,927	(46,350)	-48.8%
12	Employee Discount	4,737	6,646	15,217	(8,571)	-56.3%	26,217	25,969	64,765	(38,796)	-59.9%
13	Bad Debts	23,350	182,059	221,502	(39,443)	-17.8%	217,156	412,180	942,726	(530,546)	-56.3%
14	Denials	104,327	73,372	73,557	(185)	-0.3%	401,907	655,886	313,064	342,822	109.5%
15	<b>Total revenue deductions</b>	<b>2,084,385</b>	<b>3,084,830</b>	<b>2,741,083</b>	<b>343,747</b>	<b>12.5%</b>	<b>10,223,228</b>	<b>12,999,614</b>	<b>11,666,236</b>	<b>1,333,377</b>	<b>11.4%</b>
16	<b>Net Patient Revenue</b>	<b>2,930,538</b>	<b>2,285,978</b>	<b>2,809,504</b>	<b>(523,527)</b>	<b>-18.6%</b>	<b>10,975,586</b>	<b>9,349,877</b>	<b>11,964,813</b>	<b>(2,614,936)</b>	<b>-21.9%</b>
	revenue including Prior Year adjustment	41.6%	57.4%	49.4%	8.1%		48.2%	58.2%	49.4%	8.8%	
										0.0%	
17	<b>Other Revenue</b>	89,878	156,145	88,612	67,533	76.2%	189,823	427,346	353,926	73,420	20.7%
18	<b>Total Operating Revenue</b>	<b>3,020,416</b>	<b>2,442,123</b>	<b>2,898,116</b>	<b>(455,993)</b>	<b>-15.7%</b>	<b>11,165,409</b>	<b>9,777,223</b>	<b>12,318,739</b>	<b>(2,541,516)</b>	<b>-20.6%</b>
<b>Expenses</b>											
19	Salaries	1,300,784	1,526,254	1,531,256	(5,002)	-0.3%	5,034,698	5,652,212	6,076,886	(424,675)	-7.0%
20	Employee Benefits	441,934	486,211	519,590	(33,379)	-6.4%	1,693,093	1,983,958	2,073,380	(89,422)	-4.3%
21	Registry	118,087	107,449	69,669	37,780	54.2%	462,846	420,963	296,305	124,658	42.1%
22	Salaries and Benefits	<b>1,860,805</b>	<b>2,119,913</b>	<b>2,120,515</b>	<b>(602)</b>	<b>0.0%</b>	<b>7,190,637</b>	<b>8,057,133</b>	<b>8,446,571</b>	<b>(389,438)</b>	<b>-4.6%</b>
23	Professional fees	218,219	273,757	295,618	(21,861)	-7.4%	779,216	1,065,612	1,176,889	(111,277)	-9.5%
24	Supplies	178,874	194,220	200,234	(6,014)	-3.0%	786,832	832,453	826,040	6,413	0.8%
25	Utilities	49,960	52,093	57,233	(5,140)	-9.0%	205,941	218,945	231,958	(13,013)	-5.6%
26	Repairs and Maintenance	52,562	74,871	62,235	12,636	20.3%	242,613	280,118	248,640	31,478	12.7%
27	Purchased Services	502,377	466,708	466,628	80	0.0%	1,874,399	1,794,003	1,901,470	(107,466)	-5.7%
28	Insurance	90,001	106,212	103,607	2,605	2.5%	420,077	428,366	414,428	13,938	3.4%
29	Depreciation	78,149	78,149	67,732	10,417	15.4%	390,745	312,596	270,928	41,668	15.4%
30	Rental and Leases	20,430	27,651	22,689	4,962	21.9%	82,286	93,549	90,756	2,793	3.1%
32	Dues and Subscriptions	29,820	13,440	17,532	(4,092)	-23.3%	60,394	70,903	70,145	758	1.1%
33	Other Expense	124,939	126,683	103,904	22,779	21.9%	333,124	319,880	416,044	(96,163)	-23.1%
34	<b>Total Expenses</b>	<b>3,206,134</b>	<b>3,533,697</b>	<b>3,517,927</b>	<b>15,771</b>	<b>0.4%</b>	<b>12,366,264</b>	<b>13,473,558</b>	<b>14,093,869</b>	<b>(620,311)</b>	<b>-4.4%</b>
35	<b>Surplus (Loss) from Operations</b>	<b>(185,718)</b>	<b>(1,091,574)</b>	<b>(619,810)</b>	<b>(471,764)</b>	<b>-76.1%</b>	<b>(1,200,856)</b>	<b>(3,696,335)</b>	<b>(1,775,130)</b>	<b>(1,921,205)</b>	<b>-108.2%</b>
<b>Non-Operating Income</b>											
37	Tax Revenue	215,833	229,167	229,167	0	0.0%	863,332	1,038,355	916,667	121,688	13.3%
38	Other non-operating	29,590	556,907	474,167	82,740	17.4%	74,995	1,037,959	1,446,667	(408,708)	-28.3%
	Interest Income	131	618	-	618	#DIV/0!	675,374	486,147	450,000	36,147	8.0%
	Interest Expense	(7,271)	(6,957)	(7,333)	376	-5.1%	(29,085)	(29,702)	(29,332)	(370)	1.3%
	IGT Expense	-	-	-	-	#DIV/0!	-	-	-	-	#DIV/0!
39	<b>Total Non-operating</b>	<b>238,284</b>	<b>779,734</b>	<b>696,000</b>	<b>83,733</b>	<b>12.0%</b>	<b>1,584,617</b>	<b>2,532,759</b>	<b>2,784,001</b>	<b>(251,243)</b>	<b>-9.0%</b>
40	<b>Surplus/(Loss)</b>	<b>52,566</b>	<b>(311,840)</b>	<b>76,190</b>	<b>(388,030)</b>	<b>509.3%</b>	<b>383,761</b>	<b>(1,163,576)</b>	<b>1,008,872</b>	<b>(2,172,448)</b>	<b>215.3%</b>

**Bear Valley Community Healthcare District  
Financial Statements**

**Current Year Trending Statement of Operations**

**A Statement of Operations—CURRENT YEAR 2025**

		1	2	3	4	5	6	7	8	9	10	11	12	
		July	Aug	Sept	Oct	Nov	Dec	Jan	Feb	Mar	Apr	May	June	YTD
<b>1</b>	<b>Gross Patient Revenue</b>													
1	Inpatient	548,673	501,640	286,439	474,566									1,811,319
2	Outpatient	1,036,654	1,029,143	969,447	1,132,094									4,167,338
3	Clinic	369,463	345,846	282,583	379,501									1,377,394
4	Emergency Room	4,069,032	3,609,764	2,777,653	2,950,438									13,406,887
5	Skilled Nursing Facility	411,287	380,194	360,864	434,209									1,586,554
6	<b>Total patient revenue</b>	<b>6,435,109</b>	<b>5,866,588</b>	<b>4,676,986</b>	<b>5,370,808</b>	-	-	-	-	-	-	-	-	<b>22,349,491</b>
	<b>Revenue Deductions</b>	C/A	0.49	0.62	0.41	0.51	#DIV/0!	#DIV/0!	#DIV/0!	#DIV/0!	#DIV/0!	#DIV/0!	#DIV/0!	0.51
7	Contractual Allow	3,157,029	3,628,721	1,916,154	2,713,778									11,415,681
8	Contractual Allow PY	-												-
9	Charity Care	-	130,055	19,387	2,654									152,095
10	Administrative	136,547	30,025	28,806	93,848									289,227
11	Policy Discount	10,047	14,347	11,708	12,474									48,577
12	Employee Discount	7,983	7,545	3,795	6,646									25,969
13	Bad Debts	179,539	(189,644)	240,226	182,059									412,180
14	Denials	186,795	281,494	114,225	73,372									655,886
15	<b>Total revenue deductions</b>	<b>3,677,939</b>	<b>3,902,543</b>	<b>2,334,302</b>	<b>3,084,830</b>	-	-	-	-	-	-	-	-	<b>12,999,614</b>
16	<b>Net Patient Revenue</b>	0.57	0.67	0.50	0.57	#DIV/0!	#DIV/0!	#DIV/0!	#DIV/0!	#DIV/0!	#DIV/0!	#DIV/0!	#DIV/0!	
	net / tot pat rev	42.8%	33.5%	50.1%	42.6%	#DIV/0!	#DIV/0!	#DIV/0!	#DIV/0!	#DIV/0!	#DIV/0!	#DIV/0!	#DIV/0!	41.8%
17	<b>Other Revenue</b>	2.9%	4.8%	2.4%	1.4%	#DIV/0!	#DIV/0!	#DIV/0!	#DIV/0!	#DIV/0!	#DIV/0!	#DIV/0!	#DIV/0!	2.9%
		70,254	73,692	127,255	156,145									427,346
18	<b>Total Operating Revenue</b>	<b>2,827,424</b>	<b>2,037,737</b>	<b>2,469,939</b>	<b>2,442,123</b>	-	-	-	-	-	-	-	-	<b>9,777,223</b>
	<b>Expenses</b>													
19	Salaries	1,201,654	1,668,615	1,255,689	1,526,254									5,652,212
20	Employee Benefits	444,548	582,963	470,237	486,211									1,983,958
21	Registry	99,973	119,575	93,966	107,449									420,963
22	Salaries and Benefits	1,746,174	2,371,153	1,819,892	2,119,913	-	-	-	-	-	-	-	-	8,057,133
23	Professional fees	234,004	300,107	257,745	273,757									1,065,612
24	Supplies	205,156	208,669	224,409	194,220									832,453
25	Utilities	62,144	46,153	58,555	52,093									218,945
26	Repairs and Maintenance	64,539	75,161	65,547	74,871									280,118
27	Purchased Services	437,767	399,488	490,040	466,708									1,794,003
28	Insurance	108,112	106,836	107,206	106,212									428,366
29	Depreciation	78,149	78,149	78,149	78,149									312,596
30	Rental and Leases	17,135	24,134	24,629	27,651									93,549
32	Dues and Subscriptions	20,633	20,467	16,363	13,440									70,903
33	Other Expense	46,821	70,319	76,057	126,683									319,880
34	<b>Total Expenses</b>	<b>3,020,634</b>	<b>3,700,637</b>	<b>3,218,590</b>	<b>3,533,697</b>	-	-	-	-	-	-	-	-	<b>13,473,558</b>
35	<b>Surplus (Loss) from Operations</b>	<b>(193,209)</b>	<b>(1,662,900)</b>	<b>(748,651)</b>	<b>(1,091,574)</b>	-	-	-	-	-	-	-	-	<b>(3,696,335)</b>
36	<b>Non-Operating Income</b>													
37	Tax Revenue	350,855	229,167	229,167	229,167									1,038,355
38	Other non-operating	319,388	9,108	152,556	556,907									1,037,959
	Interest Income	772	211	484,545	618									486,147
	Interest Expense	(8,418)	(7,243)	(7,083)	(6,957)									(29,702)
	IGT Expense													-
39	<b>Total Non-operating</b>	<b>662,597</b>	<b>231,243</b>	<b>859,185</b>	<b>779,734</b>	-	-	-	-	-	-	-	-	<b>2,532,759</b>
40	<b>Surplus/(Loss)</b>	<b>469,388</b>	<b>(1,431,657)</b>	<b>110,534</b>	<b>(311,840)</b>	-	-	-	-	-	-	-	-	<b>(1,163,576)</b>







**Units of Service**  
For the period ending Oct 2024

31

123

**Current Month**

**Bear Valley Community Hospital**

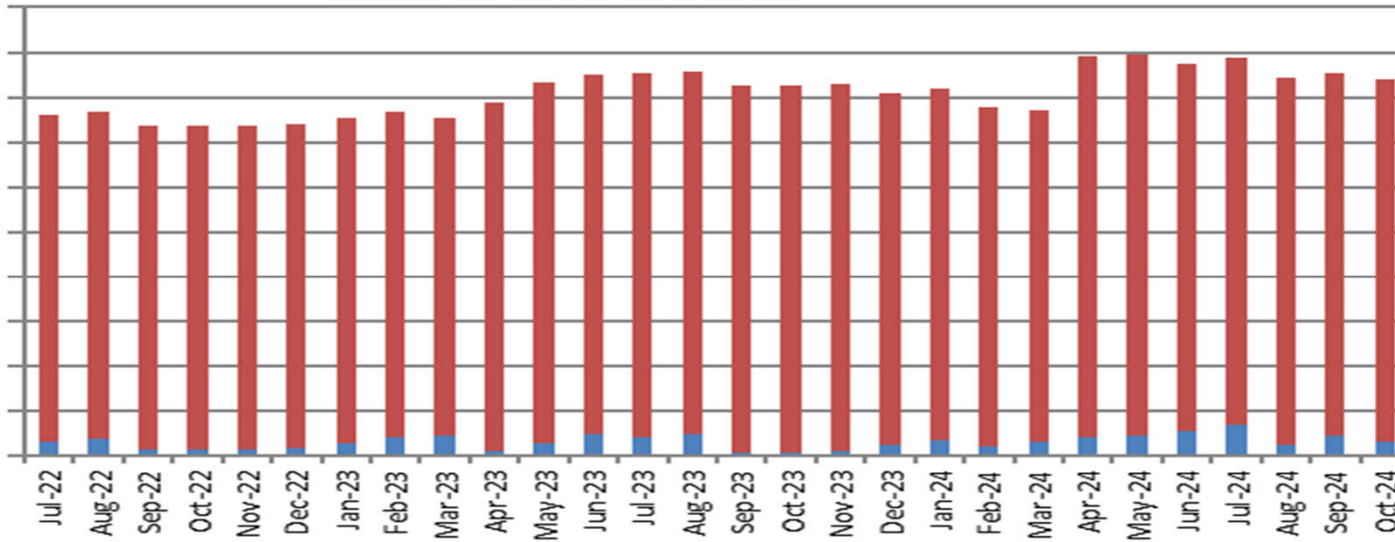
**Year-To-Date**

Oct-24		Oct-23	Actual -Budget		Act.-Act.		Oct-24		Oct-23	Actual -Budget		Act.-Act.
Actual	Budget	Actual	Variance	Var %	Var %		Actual	Budget	Actual	Variance	Var %	Var %
110	158	90	(48)	-30.2%	22.2%	Med Surg Patient Days	409	580	283	(171)	-29.4%	44.5%
48	78	104	(30)	-38.1%	-53.8%	Swing Patient Days	141	308	290	(167)	-54.1%	-51.4%
615	605	640	10	1.7%	-3.9%	SNF Patient Days	2,308	2,448	2,304	(140)	-5.7%	0.2%
<b>773</b>	<b>840</b>	<b>834</b>	<b>(67)</b>	<b>-8.0%</b>	<b>-7.3%</b>	<b>Total Patient Days</b>	<b>2,858</b>	<b>3,335</b>	<b>2,877</b>	<b>(477)</b>	<b>-14.3%</b>	<b>-0.7%</b>
31	30	21	1	4.9%	47.6%	Acute Admissions	115	117	86	(2)	-1.9%	33.7%
30	29	4	1	3.9%	650.0%	Acute Discharges	116	115	73	1	1.2%	58.9%
3.7	5.5	22.5	(42.3)	-775.3%	-83.7%	Acute Average Length of Stay	3.5	5.1	3.9	(2)	-30.3%	-9.1%
1.5	2.5	3.4	(0.95)	-38.1%	-53.8%	Swing Average Daily Census	1.1	2.5	2.4	(1.4)	-54.1%	-51.4%
3.5	5.1	2.9	(1.53)	-30.2%	22.2%	Acute Average Daily Census	3.3	4.7	2.3	(1.4)	-29.4%	44.5%
19.8	19.5	20.6	0.3	1.7%	-3.9%	SNFAvg Daily Census	18.8	19.9	18.7	(1.1)	-5.7%	0.2%
<b>24.9</b>	<b>27.1</b>	<b>26.9</b>	<b>(2.2)</b>	<b>-8.0%</b>	<b>-7.3%</b>	<b>Total Avg. Daily Census</b>	<b>23.2</b>	<b>27.1</b>	<b>23.4</b>	<b>(3.9)</b>	<b>-14.3%</b>	<b>-0.7%</b>
<b>55.4%</b>	<b>60.2%</b>	<b>59.8%</b>	<b>-5%</b>	<b>-8.0%</b>	<b>-7.3%</b>	<b>% Occupancy</b>	<b>51.6%</b>	<b>60.3%</b>	<b>52.0%</b>	<b>-9%</b>	<b>-14.3%</b>	<b>-0.7%</b>
32	18	20	14	79.6%	60.0%	Emergency Room Admitted	113	86	80	27	31.5%	41.3%
769	820	794	(51)	-6.2%	-3.1%	Emergency Room Discharged	3,460	3,952	3,782	(492)	-12.4%	-8.5%
<b>801</b>	<b>838</b>	<b>814</b>	<b>(37)</b>	<b>-4.4%</b>	<b>-1.6%</b>	<b>Emergency Room Total</b>	<b>3,573</b>	<b>4,038</b>	<b>3,862</b>	<b>(465)</b>	<b>-11.5%</b>	<b>-7.5%</b>
<b>26</b>	<b>27</b>	<b>26</b>	<b>(1)</b>	<b>-4.4%</b>	<b>-1.6%</b>	<b>ER visits per calendar day</b>	<b>29</b>	<b>33</b>	<b>31</b>	<b>(4)</b>	<b>-11.5%</b>	<b>-7.5%</b>
<b>103.2%</b>	<b>60.3%</b>	<b>95.2%</b>	<b>10%</b>	<b>16.9%</b>	<b>8.4%</b>	<b>% Admits from ER</b>	<b>98.3%</b>	<b>73.3%</b>	<b>93.0%</b>	<b>-8%</b>	<b>-11.4%</b>	<b>5.6%</b>
3	5	-	(2)	0.0%	#DIV/0!	Surgical Procedures I/P	9	18	-	(9)	0.0%	#DIV/0!
10	21	13	(11)	-51.9%	-23.1%	Surgical Procedures O/P	55	77	39	(22)	-28.4%	41.0%
<b>13</b>	<b>26</b>	<b>13</b>	<b>(13)</b>	<b>-49.6%</b>	<b>0.0%</b>	<b>TOTAL Procedures</b>	<b>64</b>	<b>95</b>	<b>39</b>	<b>(31)</b>	<b>-32.5%</b>	<b>64.1%</b>

Units of Service For the period ending Oct 2024													
Current Month						Bear Valley Community Hospital						Year-To-Date	
Oct-24		Oct-23	Actual -Budget		Act.-Act.	Oct-24		Oct-23	Actual -Budget		Act.-Act.		
Actual	Budget	Actual	Variance	Var %	Var %	Actual	Budget	Actual	Variance	Var %	Var %		
6,897	6,460	5,969	437	6.8%	15.5%		Lab Procedures	26,872	26,641	24,983	231	0.9%	7.6%
653	715	678	(62)	-8.7%	-3.7%		X-Ray Procedures	2,824	3,177	3,028	(353)	-11.1%	-6.7%
427	409	371	18	4.4%	15.1%		C.T. Scan Procedures	1,695	1,706	1,596	(11)	-0.6%	6.2%
200	162	191	38	23.5%	4.7%		Ultrasound Procedures	681	656	679	25	3.8%	0.3%
73	57	94	16	27.3%	-22.3%		Mammography Procedures	217	227	263	(10)	-4.6%	-17.5%
299	285	285	14	4.9%	4.9%		EKG Procedures	1,185	1,224	1,224	(39)	-3.2%	-3.2%
103	96	100	7	7.3%	3.0%		Respiratory Procedures	392	397	362	(5)	-1.3%	8.3%
2,632	2,892	2,463	(260)	-9.0%	6.9%		Physical Therapy Procedures	10,048	9,796	10,024	252	2.6%	0.2%
2,212	1,704	1,347	508	29.8%	64.2%		Primary Care Clinic Visits	7,898	6,848	6,083	1,050	15.3%	29.8%
331	270	264	61	22.6%	25.4%		Specialty Clinic Visits	1,222	1,055	1,088	167	15.8%	12.3%
<b>2,543</b>	<b>1,974</b>	<b>1,611</b>	<b>569</b>	<b>28.8%</b>	<b>57.9%</b>		<b>Clinic</b>	<b>9,120</b>	<b>7,903</b>	<b>7,171</b>	<b>1,217</b>	<b>15.4%</b>	<b>27.2%</b>
<b>82</b>	<b>64</b>	<b>52</b>	<b>18</b>	<b>28.8%</b>	<b>57.9%</b>		<b>Clinic visits per work day</b>	<b>74</b>	<b>64</b>	<b>58</b>	<b>10</b>	<b>15.4%</b>	<b>27.2%</b>
17.6%	15.00%	18.30%	2.60%	17.33%	-3.83%		% Medicare Revenue	14.53%	15.00%	15.83%	-0.48%	-3.17%	-8.21%
46.40%	37.00%	42.30%	9.40%	25.41%	9.69%		% Medi-Cal Revenue	44.63%	37.00%	40.00%	7.63%	20.61%	11.56%
32.80%	43.00%	35.50%	-10.20%	-23.72%	-7.61%		% Insurance Revenue	37.28%	43.00%	41.73%	-5.73%	-13.31%	-10.67%
3.20%	3.50%	3.90%	-0.30%	-8.57%	-17.95%		% Self-Pay Revenue	3.58%	3.50%	3.23%	0.08%	2.14%	10.85%
190.1	192.2	179.9	(2.0)	-1.1%	5.7%		Productive FTE's	190.1	192.2	181.1	(2.0)	-1.1%	5.0%
210.6	213.5	204.6	(2.9)	-1.4%	2.9%		Total FTE's	210.6	213.5	205.3	(2.9)	-1.4%	2.6%

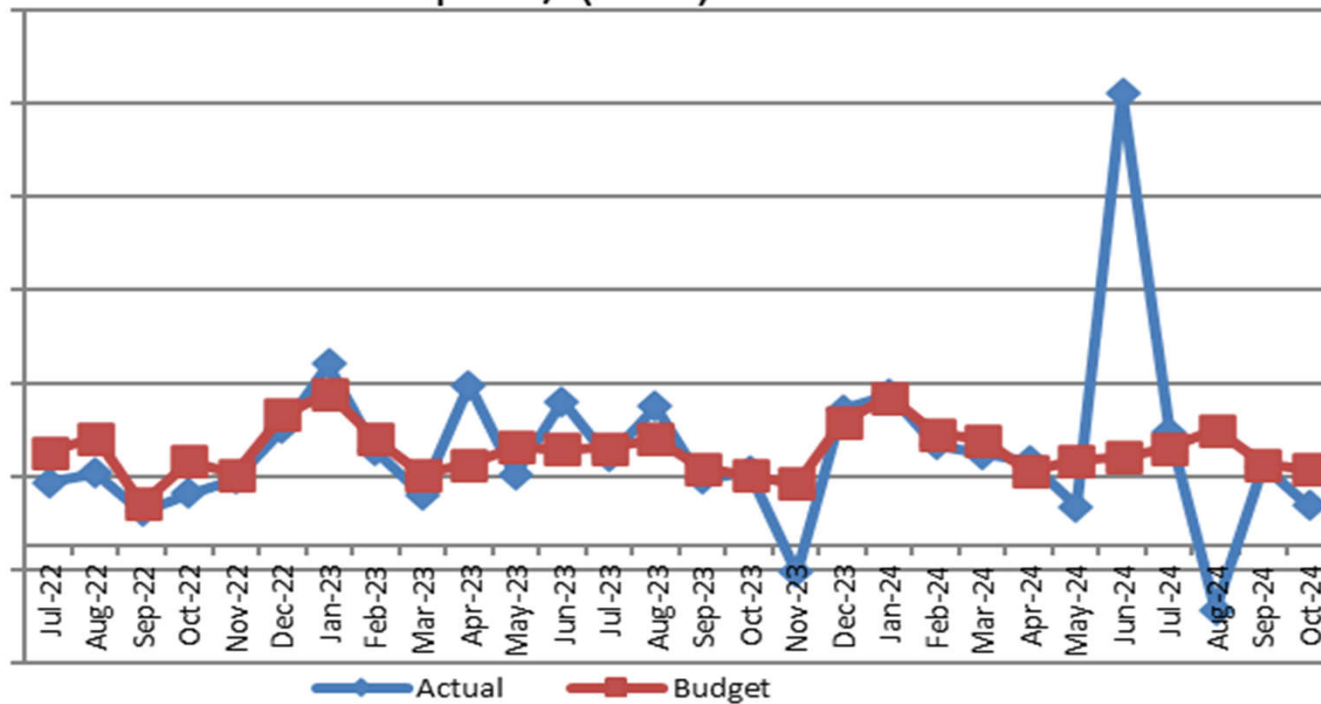
### Cash & Investments

50,000,000  
45,000,000  
40,000,000  
35,000,000  
30,000,000  
25,000,000  
20,000,000  
15,000,000  
10,000,000  
5,000,000  
-

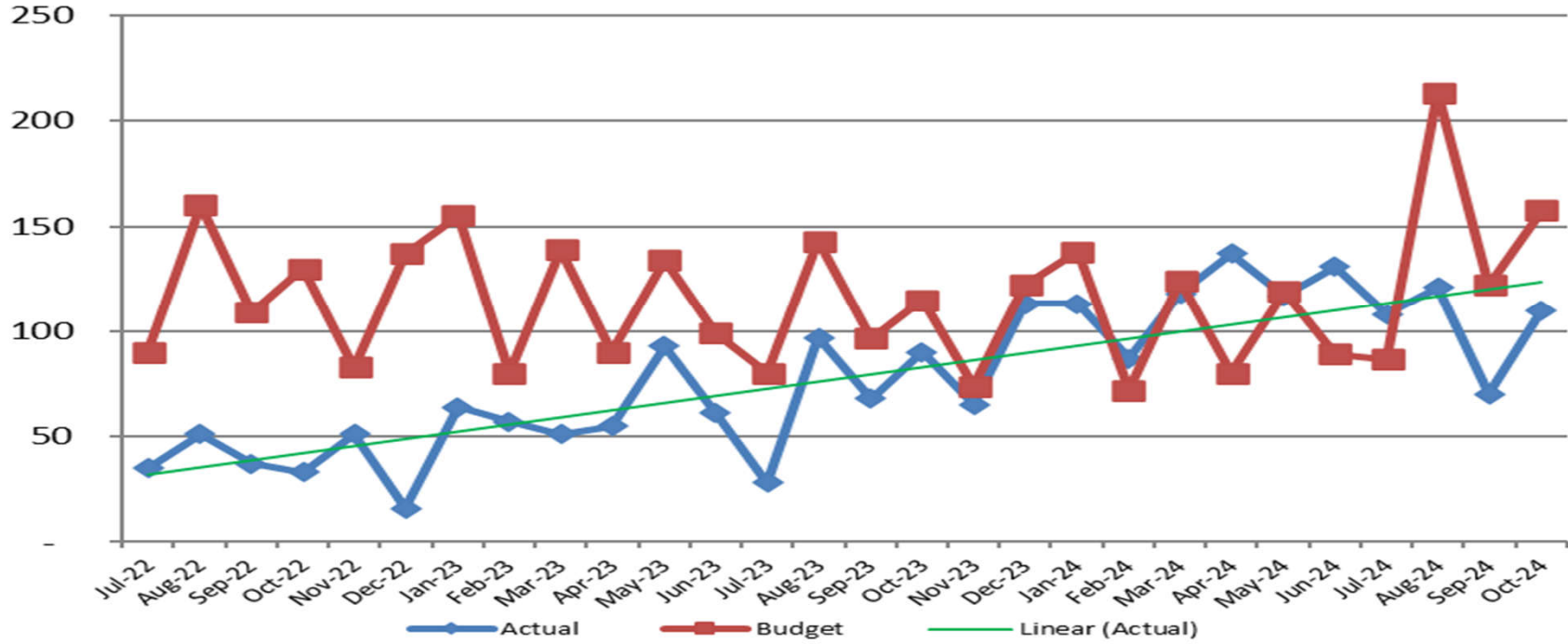


### Surplus / (Loss)

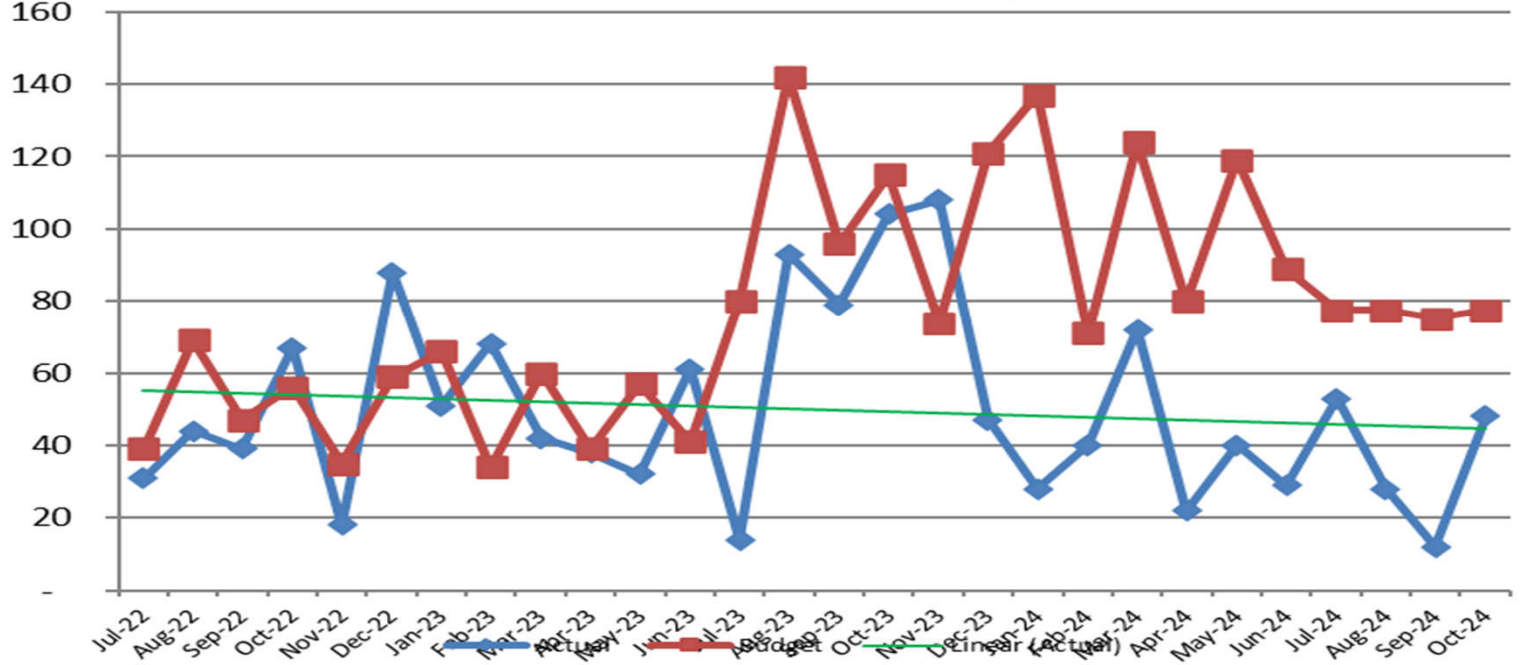
5,000,000  
4,000,000  
3,000,000  
2,000,000  
1,000,000  
-  
(1,000,000)  
(2,000,000)



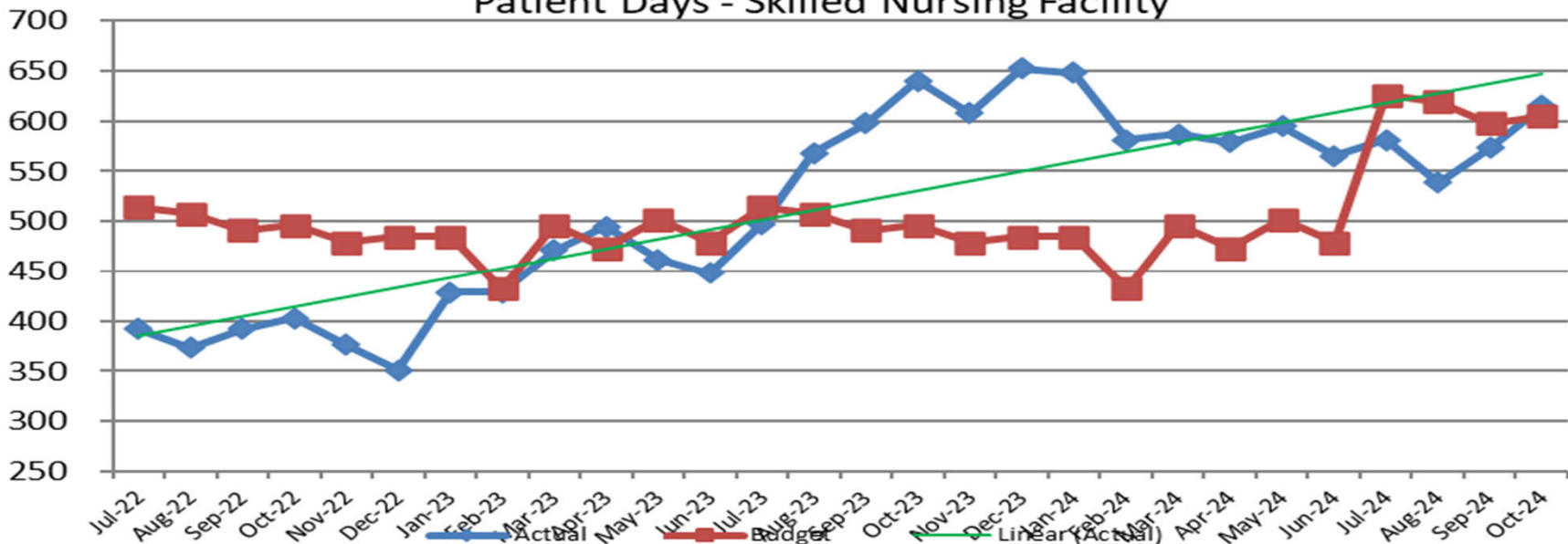
Patient Days - Acute



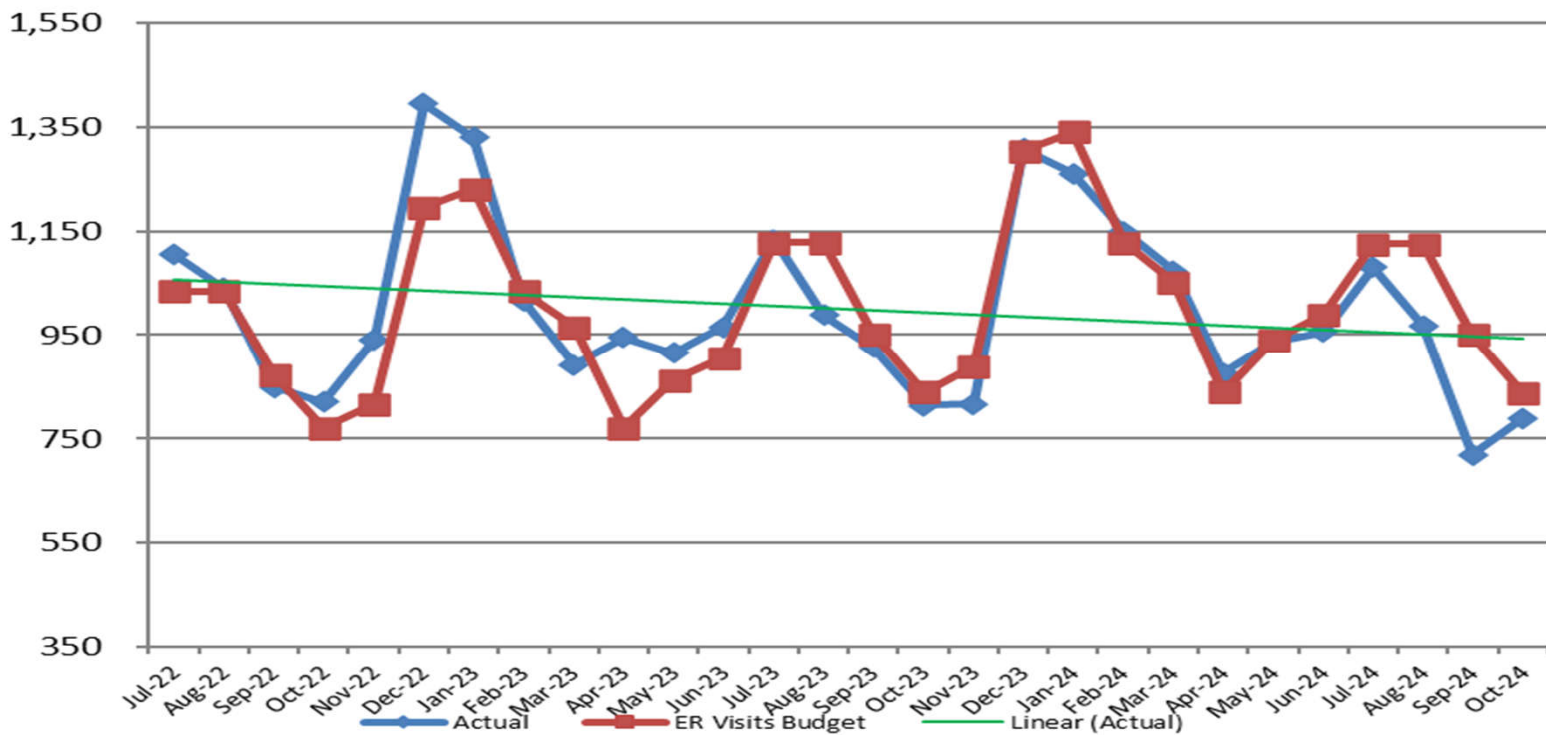
Patient Days - Swing



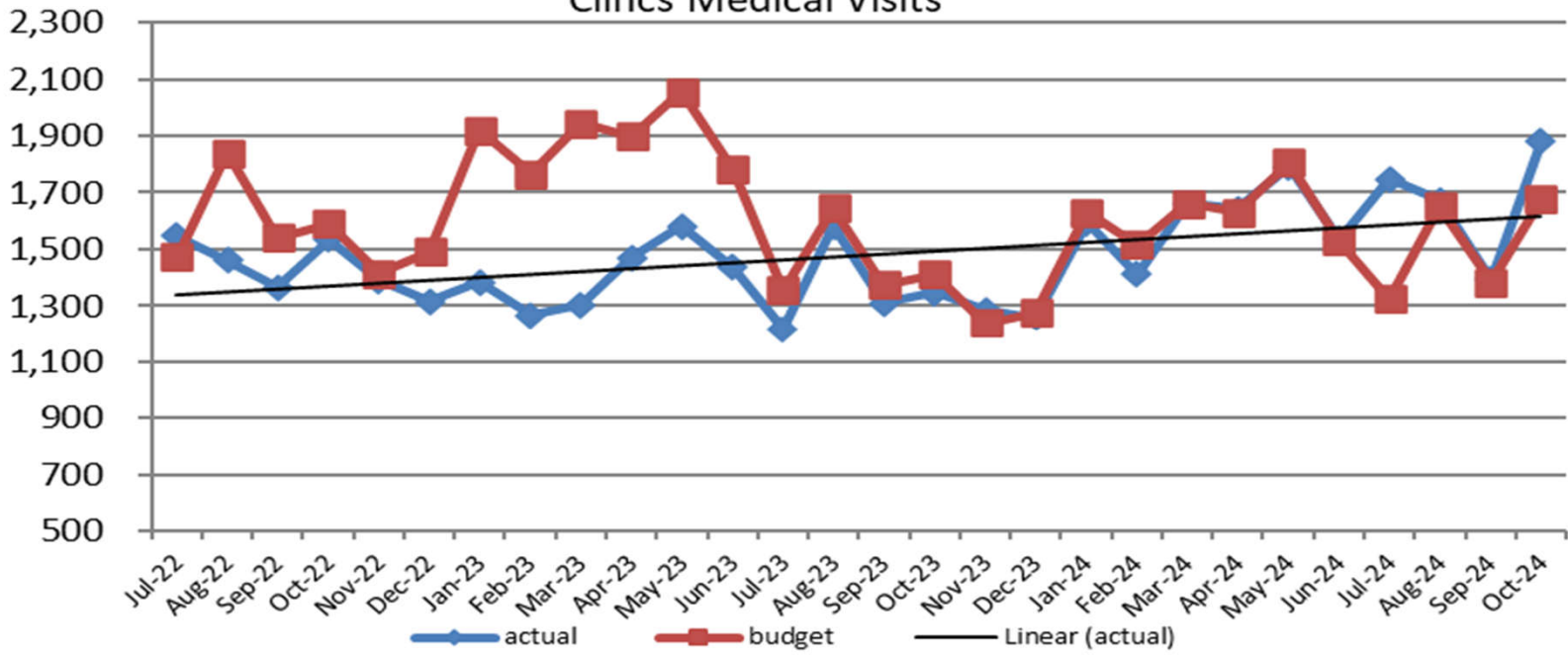
### Patient Days - Skilled Nursing Facility



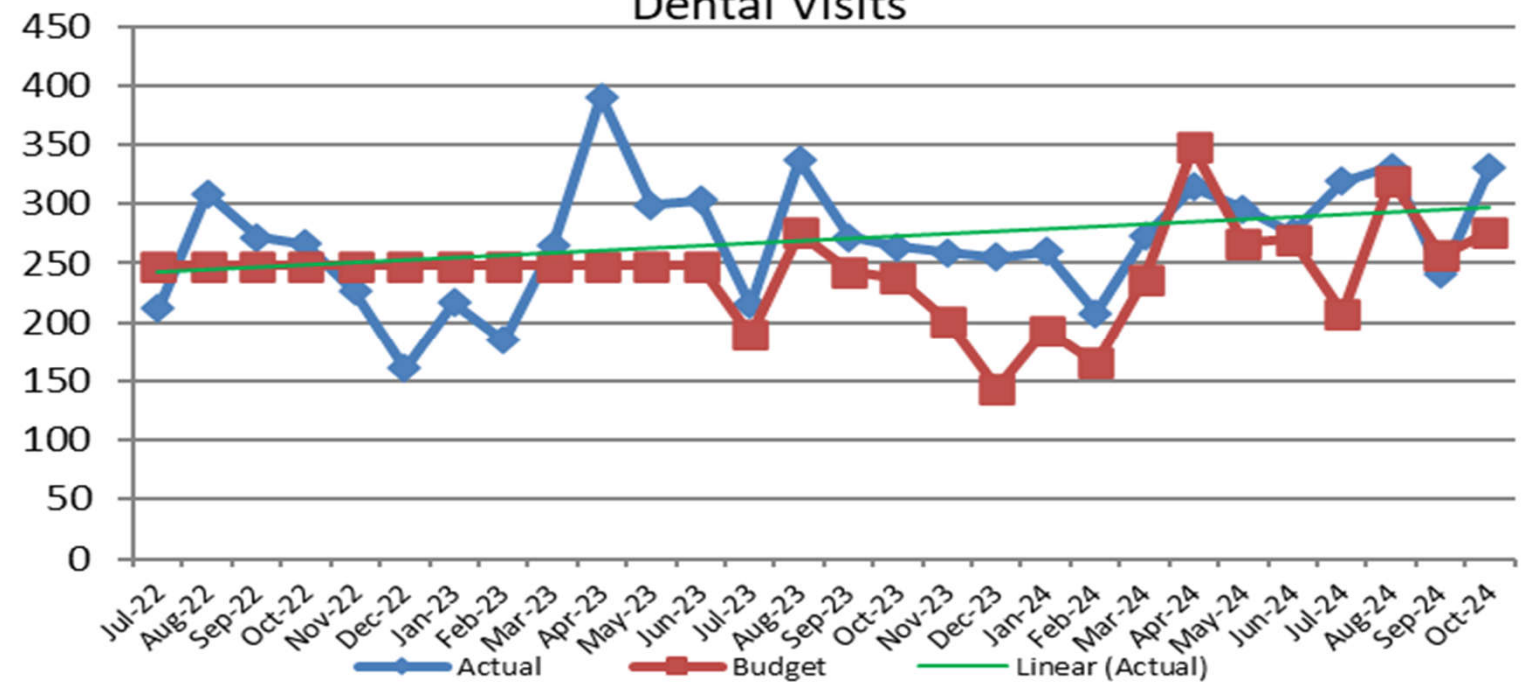
### Emergency Room Visits



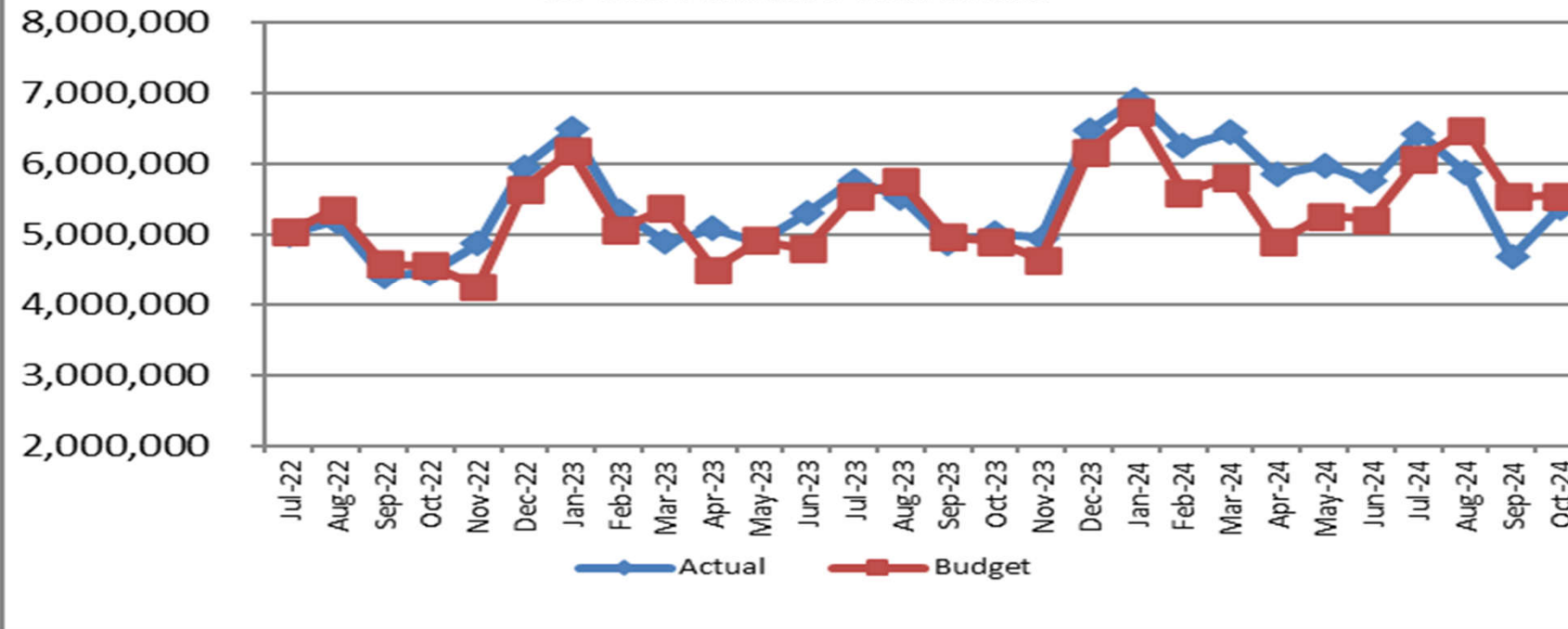
### Clincs Medical Visits



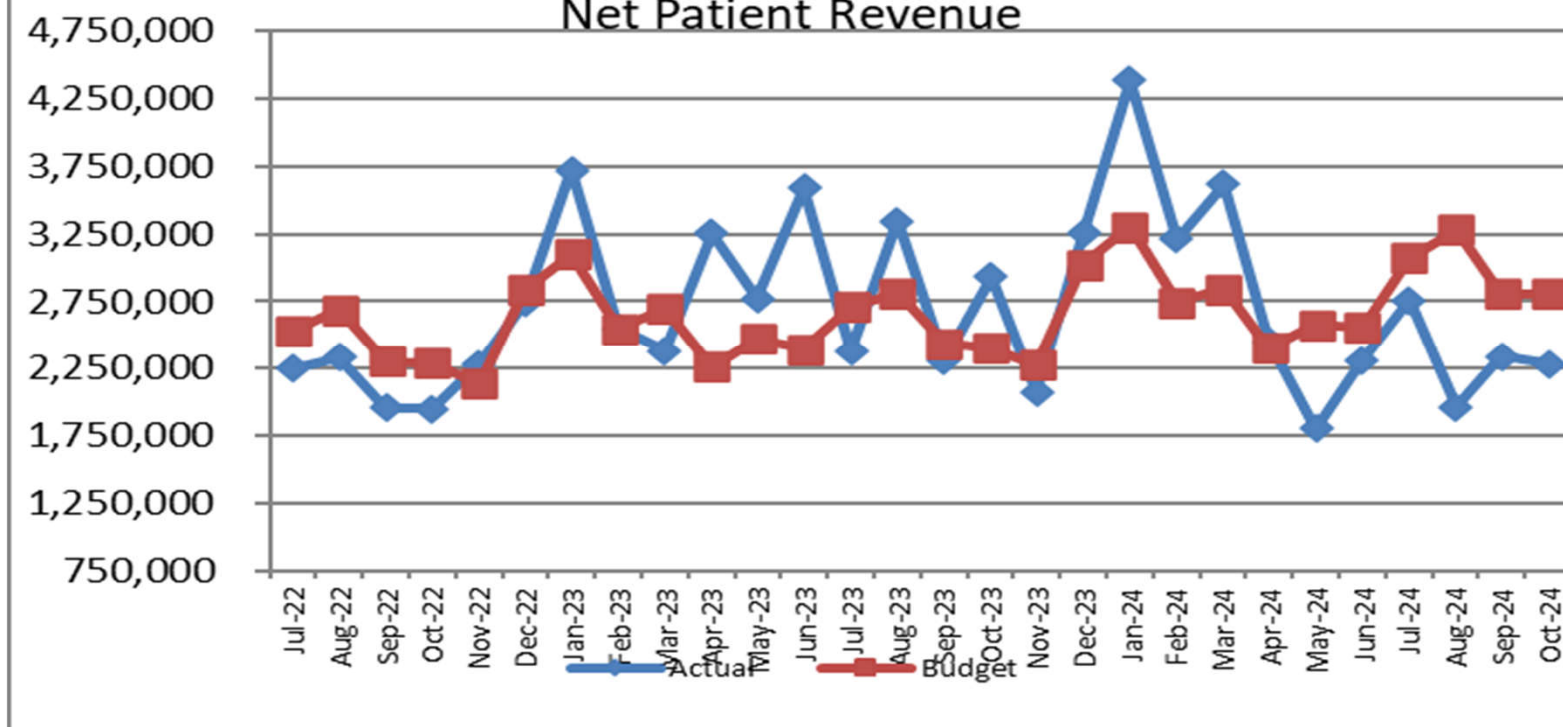
### Dental Visits



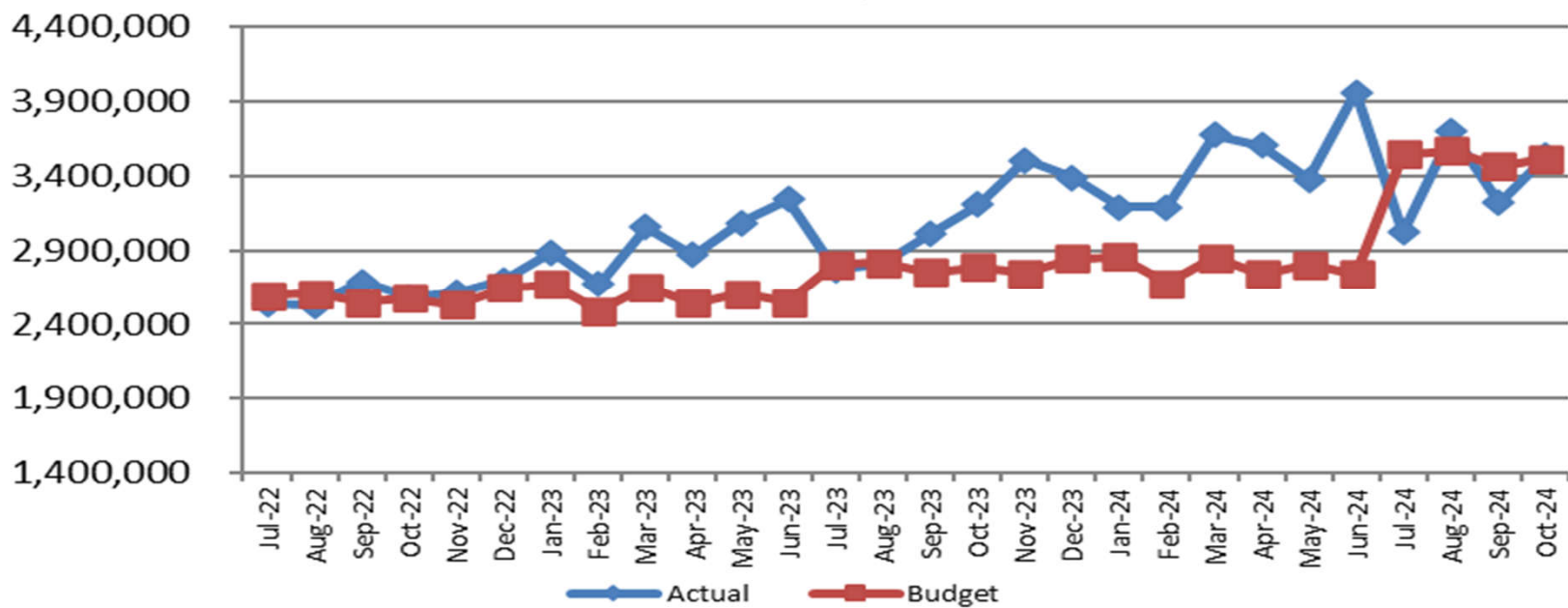
### Gross Patient Revenue



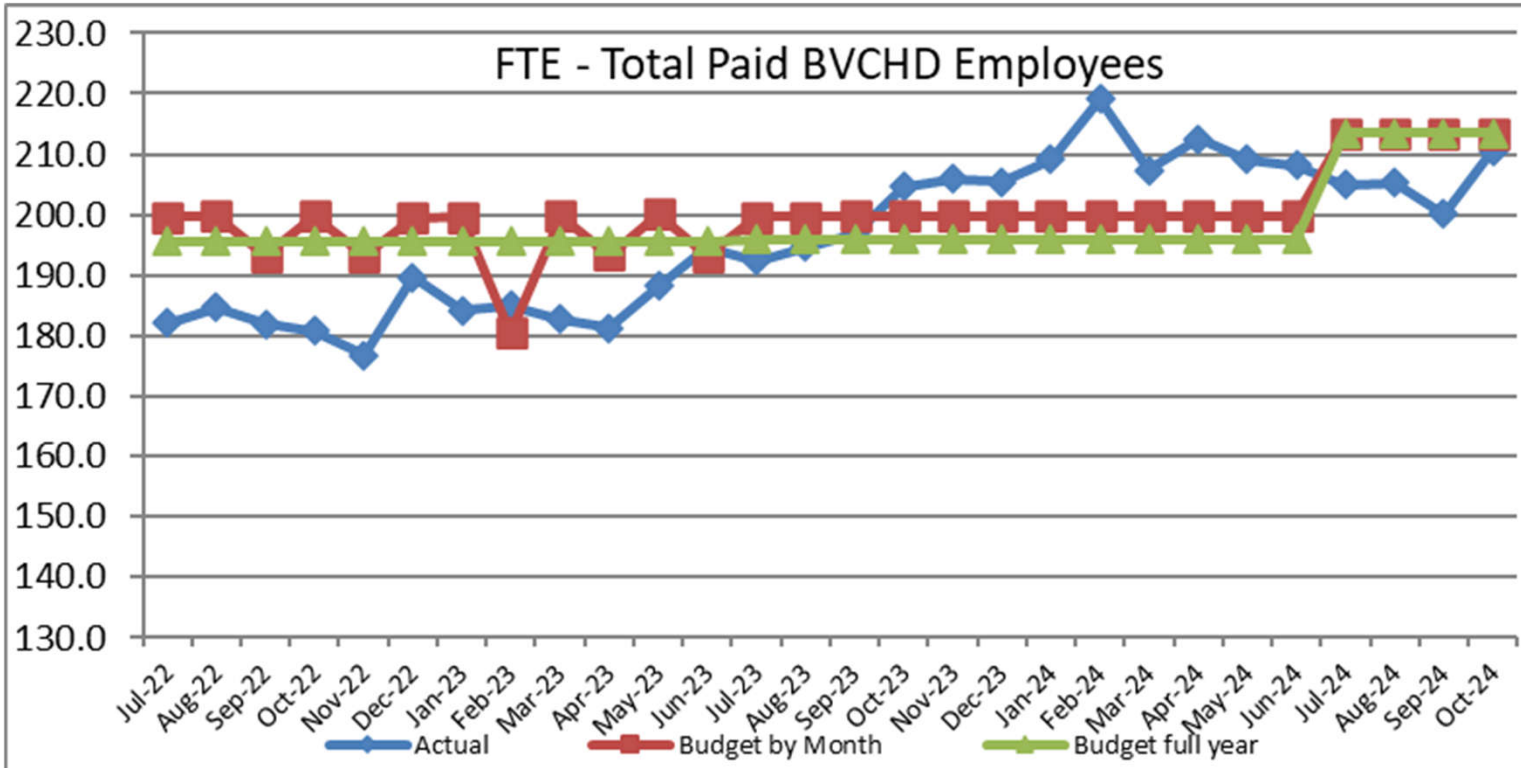
### Net Patient Revenue



### Total Expenses

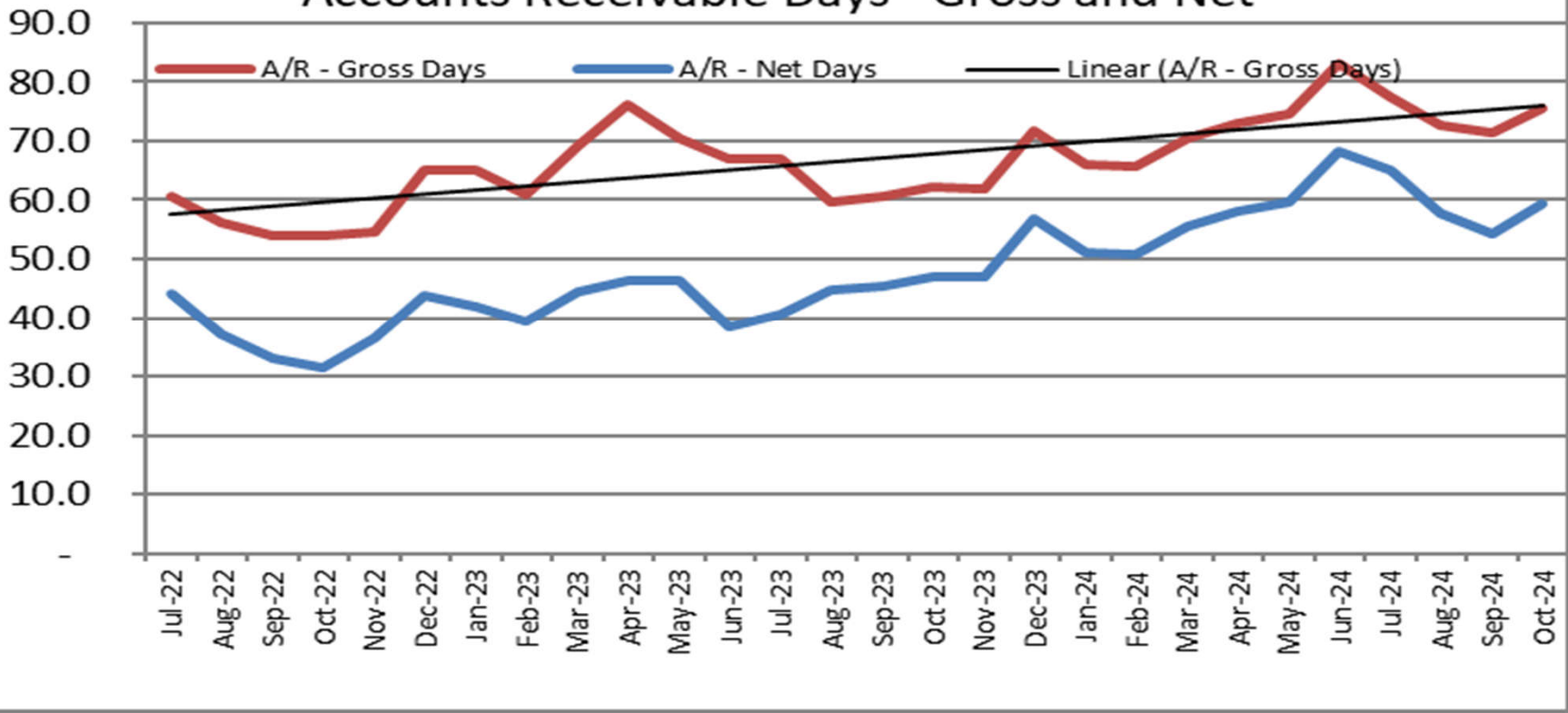


### FTE - Total Paid BVCHD Employees

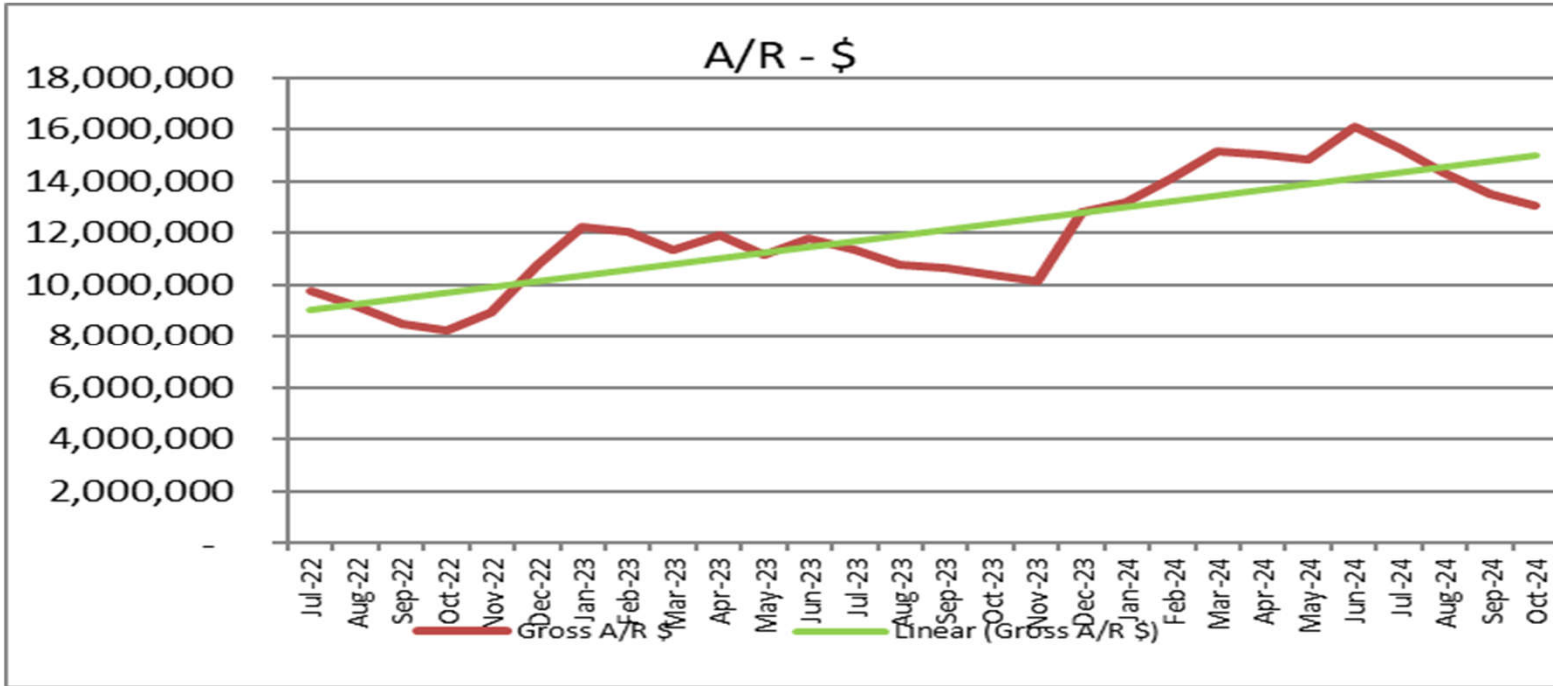




## Accounts Receivable Days - Gross and Net



## A/R - \$



RUN DATE:11/25/24  
TIME:13:24

BEAR VALLEY COMMUNITY  
CHECK REGISTER  
10/01/24 THRU 10/31/24

PAGE 1  
GLCKREG

BANK--CHECK-----

CODE	NUMBER	DATE	AMOUNT	PAYEE
ACH *	001966	10/24/24	1,375.00	CR BDM BEN-GAL LTD
ACH	001998	10/01/24	475.16	CARDINAL HEALTH
ACH	001999	10/01/24	1,668.28	WAGWORKS, INC.
ACH *	002000	10/02/24	4,294.00	RAFFY KRİKORIAN
ACH	022001	10/02/24	57.65	CARDINAL HEALTH
ACH	022002	10/03/24	523.82	CARDINAL HEALTH
ACH	022003	10/04/24	391.30	CARDINAL HEALTH
ACH	022004	10/07/24	2,431.06	CARDINAL HEALTH
ACH	022005	10/08/24	774.39	CARDINAL HEALTH
ACH	022006	10/08/24	1,143.42	WAGWORKS, INC.
ACH	022007	10/09/24	66.11	CARDINAL HEALTH
ACH	022008	10/11/24	7,175.43	MCKESSON CORPORATION
ACH	022009	10/11/24	857.20	CARDINAL HEALTH
ACH	022010	10/15/24	3,486.33	VISA
ACH	022011	10/15/24	89.40	CARDINAL HEALTH
ACH	022012	10/15/24	2,573.51	CARDINAL HEALTH
ACH	022013	10/16/24	2,498.35	WAGWORKS, INC.
ACH	022014	10/16/24	247.07	CARDINAL HEALTH
ACH	022015	10/17/24	2,261.00	BOARD OF EQUALIZATION
ACH	022016	10/17/24	1,596.34	CARDINAL HEALTH
ACH	022017	10/18/24	712.07	CARDINAL HEALTH
ACH	022018	10/21/24	3,167.96	CARDINAL HEALTH
ACH	022019	10/22/24	1,469.19	CARDINAL HEALTH
ACH	022020	10/22/24	1,233.26	WAGWORKS, INC.
ACH	022021	10/23/24	218.29	CARDINAL HEALTH
ACH	022022	10/24/24	222.09	CARDINAL HEALTH
ACH	022023	10/25/24	539.54	CARDINAL HEALTH
ACH	022024	10/25/24	3,369.32	MCKESSON CORPORATION
ACH	022025	10/28/24	237.47	CARDINAL HEALTH
ACH	022026	10/28/24	4,774.72	CARDINAL HEALTH
ACH	022027	10/29/24	628.12	WAGWORKS, INC.
ACH	022028	10/29/24	2,634.04	CARDINAL HEALTH
ACH *	022029	10/31/24	80.27	CARDINAL HEALTH
FMB *	095013	10/14/24	70.00	CR FLORES MARIA C
FMB *	099256	10/14/24	40.00	CR NARAL CHANDRABATI
FMB *	102762	10/14/24	30.00	CR PATTERSON JOSHUA
FMB *	111533	10/11/24	1,000.00	CR BIG BEAR SKI EDUCATIONAL FOUND
FMB *	113634	10/28/24	251.10	CR EVA PIERCE
FMB *	113876	10/10/24	1,800.00	CR QUADIENT FINANCE USA, INC
FMB *	114160	10/10/24	1,500.00	CR MICHAEL NORMAN DO
FMB *	114387	10/10/24	1,500.00	CR MICHAEL NORMAN DO
FMB	114635	10/03/24	9,768.00	HERITAGE MEDICAL GROUP
FMB	114636	10/03/24	120.96	OVERPAYMENT RECOVERY
FMB	114637	10/03/24	3,461.84	AFLAC
FMB	114638	10/03/24	278.04	AIRGAS USA,LLC
FMB	114639	10/03/24	4,777.96	ALCON VISION, LLC
FMB	114640	10/03/24	707.43	ALIMED INC
FMB	114641	10/03/24	1,799.42	AMAZON CAPITAL SERVICES, INC
FMB	114642	10/03/24	1,250.00	ANDY WERKING
FMB	114643	10/03/24	156.03	ANGELA RODRIGUEZ

RUN DATE:11/25/24  
TIME:13:24

BEAR VALLEY COMMUNITY  
CHECK REGISTER  
10/01/24 THRU 10/31/24

PAGE 2  
GLCKREG

BANK--CHECK-----			
CODE	NUMBER	DATE	PAYEE
FMB	114644	10/03/24	725.57 ARTHREX CREDIT
FMB	114645	10/03/24	1,179.75 ARTHREX, INC
FMB	114646	10/03/24	995.42 BAUSCH & LOMB AMERICAS INC.
FMB	114647	10/03/24	242.68 BEAR VALLEY ELECTRIC
FMB	114648	10/03/24	72.26 BECKMAN COULTER INC
FMB	114649	10/03/24	417.76 BEST WESTERN PLUS BIG BEAR CHA
FMB	114650	10/03/24	40.68 BIG BEAR CITY CSD
FMB	114651	10/03/24	28,045.00 BIG BEAR FAMILY MEDICINE, INC
FMB	114652	10/03/24	628.66 BIO RAD LABORATORIES, INC.
FMB	114653	10/03/24	2,855.20 BRACCO DIAGNOSTICS INC
FMB	114654	10/03/24	731.00 BREWD COFFEE SYSTEMS
FMB	114655	10/03/24	1,600.81 BUTCHERS BLOCK
FMB	114656	10/03/24	180.00 CALIF TELEHEALTH NETWORK
FMB	114657	10/03/24	891.09 CALIF TOOL & WELDING SUPPLY
FMB	114658	10/03/24	193,543.22 CALPERS1486578418
FMB	114659	10/03/24	2,275.00 CALVIN PRAMANN, DC
FMB	114660	10/03/24	516.55 CDW GOVERNMENT INC
FMB	114661	10/03/24	248.00 CLIA LABORATORY PROGRAM
FMB	114662	10/03/24	2,224.92 CLIMATEC, LLC
FMB	114663	10/03/24	65,183.00 COSCO FIRE PROTECTION, INC
FMB	114664	10/03/24	7,900.00 DAVID HORNER PC
FMB	114665	10/03/24	224.00 DEPT OF JUSTICE
FMB	114666	10/03/24	783.03 DIRECT SIGNS
FMB	114667	10/03/24	1,617.01 DIRECT SUPPLY HEALTHCARE EQUIP
FMB	114668	10/03/24	225.83 DIY HOME CENTER
FMB	114669	10/03/24	1,389.12 DWP CITY OF BIG BEAR LAKE
FMB	114670	10/03/24	37.50 ECOLAB
FMB	114671	10/03/24	2,500.00 ELEVATE EMERGENCY MEDICINE
FMB	114672	10/03/24	3,500.81 EMERALD TEXTILES
FMB	114673	10/03/24	1,656.19 ENV SERVICES, INC
FMB	114674	10/03/24	36,497.96 FISHER HEALTHCARE
FMB	114675	10/03/24	3,864.17 PRESENIUS KABI LLC
FMB	114676	10/03/24	30,142.23 GATEWAY ACCEPTANCE CO.
FMB	114677	10/03/24	212.58 GEIGER SUPPLY
FMB	114678	10/03/24	1,850.00 GIDDY UP RANCH
FMB	114679	10/03/24	388.95 GLOBO LANGUAGE SOLUTIONS LLC
FMB	114680	10/03/24	75.00 GNXCOR USA INC
FMB	114681	10/03/24	2,146.84 GRAINGER PARTS
FMB	114682	10/03/24	185.87 GRAPHICS DESIGNED INK INC.
FMB	114683	10/03/24	9,750.00 HABEN PROF. CHIROPRACTIC CORP.
FMB	114684	10/03/24	7,000.00 HEARTWORKS, INC
FMB	114685	10/03/24	2,000.00 HIGH DESERT PATHOLOGY MDCL GRP
FMB	114686	10/03/24	2,321.33 INDEED, INC.
FMB	114687	10/03/24	20.00 INNOVATIVE CREDIT SOLUTIONS
FMB	114688	10/03/24	8,593.29 ITXTEND LLC
FMB	114689	10/03/24	1,067.90 J AND J PRODUCE CO
FMB	114690	10/03/24	130.00 JAMES SKOIEN
FMB	114691	10/03/24	10,470.75 JOHNSON CNTRLS FIRE PROT. LP
FMB	114692	10/03/24	2,596.45 KIMBRO S APPLIANCE SERVICE
FMB	114693	10/03/24	768.18 KONICA MINOLTA BUSINESS SOL
FMB	114694	10/03/24	2,102.99 MATHESON TRI GAS INC.

RUN DATE:11/25/24  
TIME:13:24

BEAR VALLEY COMMUNITY  
CHECK REGISTER  
10/01/24 THRU 10/31/24

PAGE 3  
GLCKREG

BANK--CHECK-----				
CODE	NUMBER	DATE	AMOUNT	PAYEE
FMB	114695	10/03/24	23,895.56	MEDELY, INC.
FMB	114696	10/03/24	.00	VOIDED
FMB	114697	10/03/24	.00	VOIDED
FMB	114698	10/03/24	14,656.11	MEDLINE INDUSTRIES INC
FMB	114699	10/03/24	.00	MICHAEL NORMAN DO
FMB	114700	10/03/24	1,500.00	MICHAEL S CHIN, MD, INC
FMB	114701	10/03/24	198.85	MINDRAY DS USA INC
FMB	114702	10/03/24	121.25	MOUNTAIN WATER CO
FMB	114703	10/03/24	2,159.80	OLYMPUS AMERICA INC.
FMB	114704	10/03/24	75.00	OMEED AHADIAT, MD
FMB	114705	10/03/24	162.70	ORTHO-CLINICAL DIAGNOSTICS INC
FMB	114706	10/03/24	75.65	PEM FILINGS, LLC
FMB	114707	10/03/24	1,995.00	RAM HEALTHCARE CONSULTING GROU
FMB	114708	10/03/24	1,186.18	READY REFRESH BY NESTLE
FMB	114709	10/03/24	577.92	ROBINHOOD RESORT
FMB	114710	10/03/24	936.99	RR DONNELLEY CO
FMB	114711	10/03/24	2,700.00	SMARTSHEET INC.
FMB	114712	10/03/24	355.81	SMILEMAKERS
FMB	114713	10/03/24	21,833.00	SOL RADIOLOGY INC
FMB	114714	10/03/24	151.30	SPECTRACORP TECH. GRP., INC.
FMB	114715	10/03/24	855.00	STALCUP LANDSCAPE INNOVATIONS
FMB	114716	10/03/24	186.32	STAPLES ADVANTAGE
FMB	114717	10/03/24	247.97	STEVE LONG
FMB	114718	10/03/24	18,275.00	STEVEN MICHAEL KNAPIK
FMB	114719	10/03/24	4,985.39	SYSCO RIVERSIDE INC
FMB	114720	10/03/24	197.10	SYSMEX AMERICA, INC.
FMB	114721	10/03/24	6,132.93	T-SYSTEM, INC
FMB	114722	10/03/24	691.02	TEAMSTERS LOCAL 1932
FMB	114723	10/03/24	3,000.00	THE DOCTOR'S HOUSE, INC
FMB	114724	10/03/24	566.34	TRI ANIM HEALTH SERVICES INC
FMB	114725	10/03/24	808.13	TRUMED FINANCIAL SERVICES - LB
FMB	114726	10/03/24	1,760.00	TRYSPARROW.COM INC
FMB	114727	10/03/24	575.88	UNITED NURSES ASSOCIATION
FMB	114728	10/03/24	922.58	UNITED PARCEL SERVICE
FMB	114729	10/03/24	5,933.92	US FOOD SERVICE INC
FMB	114730	10/03/24	8,900.00	V. MADHU ANVEKAR MD, INC.
FMB	114731	10/03/24	444.10	VISA
FMB	114732	10/03/24	302.00	WAXIE SANITARY SUPPLY
FMB	114733	10/03/24	477.00	WELLSKY CORP
FMB *	114734	10/03/24	109.85	WESTFAX, INC
FMB	114738	10/10/24	164.11	AAA CHAMPION INC
FMB	114739	10/10/24	114.78	ABBOTT LABORATORIES
FMB	114740	10/10/24	130.85	AGILITI HEALTH, INC.
FMB	114741	10/10/24	316.11	ALBERTSONS SAFEWAY
FMB	114742	10/10/24	1,761.33	AMAZON CAPITAL SERVICES, INC
FMB	114743	10/10/24	2,958.80	AMERISOURCEBERGEN
FMB	114744	10/10/24	789.00	ANDREA ROJAS
FMB	114745	10/10/24	1,086.21	ANGELA RODRIGUEZ
FMB	114746	10/10/24	459.95	AT&T MOBILITY LLC
FMB	114747	10/10/24	1,070.00	BAUSCH & LOMB AMERICAS INC.
FMB	114748	10/10/24	25,375.34	BEAR VALLEY ELECTRIC

RUN DATE:11/25/24  
TIME:13:24

BEAR VALLEY COMMUNITY  
CHECK REGISTER  
10/01/24 THRU 10/31/24

PAGE 4  
GLCKREG

BANK--CHECK-----				
CODE	NUMBER	DATE	AMOUNT	PAYEE
FMB	114749	10/10/24	1,835.25	BECKMAN COULTER INC
FMB	114750	10/10/24	290.00	BELLA NATALIE CERVATES
FMB	114751	10/10/24	25,879.45	BETA HEALTHCARE GROUP
FMB	114752	10/10/24	5,800.66	BIG BEAR DISPOSAL
FMB	114753	10/10/24	1,746.00	BIG BEAR GRIZZLY
FMB	114754	10/10/24	592.00	BREWD COFFEE SYSTEMS
FMB	114755	10/10/24	2,023.44	CALIF TOOL & WELDING SUPPLY
FMB	114756	10/10/24	75.00	CAMSS - MEMBERSHIP
FMB	114757	10/10/24	4,612.49	CAREFUSION SOLUTIONS LLC
FMB	114758	10/10/24	1,125.00	CAW DBA VTECH
FMB	114759	10/10/24	5,779.46	CHARTER COMMUNICATIONS HOLDING
FMB	114760	10/10/24	1,750.00	CHEROKEE CHEMICAL CO., INC
FMB	114761	10/10/24	4,112.67	CLEAN HARBORS ENVRMTL SERV INC
FMB	114762	10/10/24	55.76	COUNTY OF SAN BERNARDINO
FMB	114763	10/10/24	2,500.00	CYRANO SYSTEMS, LLC
FMB	114764	10/10/24	10,999.88	DASHLANE USA INC.
FMB	114765	10/10/24	.00	ELEVATE EMERGENCY MEDICINE
FMB	114766	10/10/24	4,643.39	EMPLOYMENT DEVELOPMENT DEPT
FMB	114767	10/10/24	151.42	EVAN RAYNER
FMB	114768	10/10/24	3,196.05	FISHER HEALTHCARE
FMB	114769	10/10/24	1,098.13	FRONTIER COMM
FMB	114770	10/10/24	8,592.35	GATEWAY ACCEPTANCE CO.
FMB	114771	10/10/24	.00	GLOBALSTAR USA
FMB	114772	10/10/24	489.00	GOLDEN STATE STORAGE
FMB	114773	10/10/24	3,024.77	GRAINGER PARTS
FMB	114774	10/10/24	177.79	GRAPHICS DESIGNED INK INC.
FMB	114775	10/10/24	80.66	HEALTHMARK INDUSTRIES CO INC
FMB	114776	10/10/24	353.44	HIGH DESERT LASER GRAPHICS
FMB	114777	10/10/24	500.00	IGNACIO CERVANTES
FMB	114778	10/10/24	499.99	IHEARTMEDIA ENTERTAINMENT INC
FMB	114779	10/10/24	656.00	INFLUENCE MARKETING SERVICES
FMB	114780	10/10/24	1,083.85	IPITOMY COMMUNICATIONS LLC
FMB	114781	10/10/24	33,277.50	IRIS TELEHEALTH MEDICAL GROUP
FMB	114782	10/10/24	3,871.31	IRON MOUNTAIN INC
FMB	114783	10/10/24	1,050.00	ITXTEND LLC
FMB	114784	10/10/24	304.57	J AND J PRODUCE CO
FMB	114785	10/10/24	458.76	JENNIFER RICHARDS
FMB	114786	10/10/24	548.74	JON BOOTH
FMB	114787	10/10/24	1,689.93	KONICA MINOLTA
FMB	114788	10/10/24	3,233.67	MEDBRIDGE, INC
FMB	114789	10/10/24	26,213.97	MEDELY, INC.
FMB	114790	10/10/24	1,950.00	MEDICAL DISPATCH
FMB	114791	10/10/24	20,931.18	MEDLINE INDUSTRIES INC
FMB	114792	10/10/24	7,705.00	MESA ENERGY SYSTEMS
FMB	114793	10/10/24	597.95	MOONRIDGE FUEL
FMB	114794	10/10/24	205.00	NAMSS
FMB	114795	10/10/24	5,425.00	NAVE LAW OFFICE, PC
FMB	114796	10/10/24	258.92	OLYMPUS AMERICA INC.
FMB	114797	10/10/24	2,289.07	ORTHO-CLINICAL DIAGNOSTICS INC
FMB	114798	10/10/24	20,250.00	PAUL F STEMMER MD
FMB	114799	10/10/24	17,955.00	PERFORMYARD INC

RUN DATE:11/25/24  
TIME:13:24

BEAR VALLEY COMMUNITY  
CHECK REGISTER  
10/01/24 THRU 10/31/24

PAGE 5  
GLCKREG

BANK--CHECK-----				
CODE	NUMBER	DATE	AMOUNT	PAYEE
FMB	114800	10/10/24	190.00	PETTY CASH - VICTORIA SHIVELY
FMB	114801	10/10/24	60.00	PL MEDICAL CO., LLC
FMB	114802	10/10/24	246.77	POSITIVE PROMOTIONS INC
FMB	114803	10/10/24	2,080.50	RAM HEALTHCARE CONSULTING GROU
FMB	114804	10/10/24	387.00	SISTER MY SISTER BAKE SHOP
FMB	114805	10/10/24	1,820.00	STALCUP LANDSCAPE INNOVATIONS
FMB	114806	10/10/24	879.12	STERICYCLE INC
FMB	114807	10/10/24	165.49	STEVE LONG
FMB	114808	10/10/24	3,267.91	SYSCO RIVERSIDE INC
FMB	114809	10/10/24	27.65	SYSMEX AMERICA, INC.
FMB	114810	10/10/24	662.50	T-SYSTEM, INC
FMB	114811	10/10/24	47.27	TRACY LEWIS
FMB	114812	10/10/24	932.52	TRI ANIM HEALTH SERVICES INC
FMB	114813	10/10/24	1,868.14	TRI RAD INC
FMB	114814	10/10/24	1,946.91	TRONEX INTERNATIONAL, INC
FMB	114815	10/10/24	3,498.06	US FOOD SERVICE INC
FMB	114816	10/10/24	1,615.17	WAXIE SANITARY SUPPLY
FMB	114817	10/10/24	109.85	WESTFAX, INC
FMB	114818	10/10/24	38,750.00	WILLIAM CANNATA, MD
FMB	114819	10/10/24	350.00	XOPTICAL LLC
FMB	114820	10/11/24	1,500.00	BEAR VALLEY COMM HLTHCR DISTR
FMB *	114821	10/11/24	40,300.00	D CRITEL NURSING ANESTH INC
FMB	114823	10/16/24	8.66	ANTHEM BLUE CROSS
FMB	114824	10/16/24	70.00	FLORES MARIA C
FMB	114825	10/16/24	893.15	HEALTH PLAN OF NEVADA
FMB	114826	10/16/24	40.00	NARAL CHANDRABATI
FMB	114827	10/16/24	819.02	OSCAR INSURANCE CORPORA
FMB	114828	10/16/24	30.00	PATTERSON JOSHUA
FMB	114829	10/16/24	47.94	TRICAREWEST VA CCN
FMB	114830	10/16/24	133.79	TRIWEST VA CCN
FMB	114831	10/16/24	128.26	TRIWEST VA CCN
FMB	114832	10/16/24	47.94	TRIWEST VA CCN
FMB	114833	10/16/24	142.63	TRIWEST VA CCN
FMB	114834	10/16/24	246.62	ADP SCREENING AND SELECTION SE
FMB	114835	10/16/24	2,133.61	AGILITI HEALTH, INC.
FMB	114836	10/16/24	499.66	ALBERTSONS SAFEGWAY
FMB	114837	10/16/24	8.59	ALIMED INC
FMB	114838	10/16/24	878.59	AMAZON CAPITAL SERVICES, INC
FMB	114839	10/16/24	3,123.88	AMERISOURCEBERGEN
FMB	114840	10/16/24	4,525.12	BEAR VALLEY ELECTRIC
FMB	114841	10/16/24	129.03	BECKMAN COULTER INC
FMB	114842	10/16/24	790.00	BELLA NATALIE CERVATES
FMB	114843	10/16/24	25,879.45	BETA HEALTHCARE GROUP
FMB	114844	10/16/24	203.35	BIG BEAR CITY CSD
FMB	114845	10/16/24	225.00	C&D TERMITE & PEST CONTROL
FMB	114846	10/16/24	5,224.11	CAMFIL USA, INC
FMB	114847	10/16/24	1,080.00	CARDINAL HEALTH PHARMACY SERVI
FMB	114848	10/16/24	42,560.00	CENTER FOR ORAL HEALTH
FMB	114849	10/16/24	14,681.10	CLIFFORD MOSS
FMB	114850	10/16/24	7,654.92	CLIMATEC, LLC
FMB	114851	10/16/24	1,091.40	CONMED LINVATEC

RUN DATE:11/25/24  
TIME:13:24

BEAR VALLEY COMMUNITY  
CHECK REGISTER  
10/01/24 THRU 10/31/24

PAGE 6  
GLCKREG

BANK--CHECK-----			
CODE	NUMBER	DATE	PAYEE
AMOUNT			
FMB	114852	10/16/24	COUNTY OF SAN BERNARDINO
FMB	114853	10/16/24	26,044.00 CPSI/EVIDENT
FMB	114854	10/16/24	96.00 DEPT OF JUSTICE
FMB	114855	10/16/24	2,410.93 EMERALD TEXTILES
FMB	114856	10/16/24	565.92 EXPERIAN HEALTH, INC
FMB	114857	10/16/24	229.40 FASTENAL CO
FMB	114858	10/16/24	2,400.00 FDA-MQSA PROGRAM
FMB	114859	10/16/24	1,348.58 FISHER HEALTHCARE
FMB	114860	10/16/24	5,260.72 GATEWAY ACCEPTANCE CO.
FMB	114861	10/16/24	134.29 GLOBALSTAR USA
FMB	114862	10/16/24	628.54 GLOBO LANGUAGE SOLUTIONS LLC
FMB	114863	10/16/24	3,932.51 GRAINGER PARTS
FMB	114864	10/16/24	969.75 GRAPHICS DESIGNED INK INC.
FMB	114865	10/16/24	656.25 HEARTWORKS, INC
FMB	114866	10/16/24	500.00 HUMAN MEDICAL BILLING
FMB	114867	10/16/24	2,485.00 IGNACIO CERVANTES
FMB	114868	10/16/24	1,169.09 INSTRUMENTATION LABORATORY
FMB	114869	10/16/24	3,542.39 IRON MOUNTAIN INC
FMB	114870	10/16/24	1,176.06 KONICA MINOLTA BUSINESS SOL
FMB	114871	10/16/24	9,751.24 LABORATORY CORP OF AMERICA
FMB	114872	10/16/24	2,645.00 LIFESTREAM
FMB	114873	10/16/24	591.94 MARKETLAB, INC
FMB	114874	10/16/24	25,515.00 MARSH & MCLENNAN AGENCY LLC
FMB	114875	10/16/24	700.38 MATHESON TRI GAS INC.
FMB	114876	10/16/24	256.05 MATTHEW BATHGATE
FMB	114877	10/16/24	3,720.00 MCNEIL, TROPP & BRAUN, LLP
FMB	114878	10/16/24	46,627.19 MEDELY, INC.
FMB	114879	10/16/24	19,136.99 MEDLINE INDUSTRIES INC
FMB	114880	10/16/24	700.00 MINDCARE SOLUTIONS GROUP, INC
FMB	114881	10/16/24	46.35 MINDRAY DS USA INC
FMB	114882	10/16/24	7,916.81 NETWORK TIGERS, INC.
FMB	114883	10/16/24	44.90 OJ'S DONUT HOUSE
FMB	114884	10/16/24	1,400.00 OLYMPUS AMERICA INC.
FMB	114885	10/16/24	13,200.50 ORTHO-CLINICAL DIAGNOSTICS INC
FMB	114886	10/16/24	85,889.64 QHR HEALTH, LLC
FMB	114887	10/16/24	3,049.00 QUADIENT FINANCE USA, INC
FMB	114888	10/16/24	865.31 RALPH W HAUPT INC
FMB	114889	10/16/24	2,080.50 RAM HEALTHCARE CONSULTING GROU
FMB	114890	10/16/24	615.86 SIEMENS HEALTHCARE DIAGNOSTICS
FMB	114891	10/16/24	2,413.63 SOFTSCRIPT INC
FMB	114892	10/16/24	2,775.00 STANLEY K MATHIS, DPM, INC.
FMB	114893	10/16/24	5,595.13 SYSMEX AMERICA, INC.
FMB	114894	10/16/24	11,416.00 TELE CONNECT THERAPIES
FMB	114895	10/16/24	281.45 THOMSON REUTERS WEST
FMB	114896	10/16/24	37.64 UNITED PARCEL SERVICE
FMB	114897	10/16/24	149.00 VALERIE REARDON
FMB	114898	10/16/24	254.10 WAGeworks, INC.
FMB	114899	10/16/24	144.97 ZONES INC
FMB	114900	10/17/24	36,949.25 BETA HEALTHCARE GROUP
FMB	114901	10/17/24	5,120.00 UNMARKED LOGISTICS, LLC
FMB *	114902	10/17/24	12,000.00 SPEEDTRACK, INC

RUN DATE:11/25/24  
TIME:13:24

BEAR VALLEY COMMUNITY  
CHECK REGISTER  
10/01/24 THRU 10/31/24

PAGE 7  
GLCKREG

BANK--CHECK-----			
CODE	NUMBER	DATE	PAYEE
FMB	114905	10/24/24	1,816.26 AETNA
FMB	114906	10/24/24	23.67 CLARKE ELLEN
FMB	114907	10/24/24	138.96 OVERPAYMENT RECOVERY
FMB	114908	10/24/24	2,045.00 A PLUMBING AND HEATING INC
FMB	114909	10/24/24	10.66 ABBOTT LABORATORIES
FMB	114910	10/24/24	3,461.84 AFLAC
FMB	114911	10/24/24	231.14 AGILITI HEALTH, INC.
FMB	114912	10/24/24	4,500.00 AHMED EL-BERSHAWI
FMB	114913	10/24/24	261.35 ALIMED INC
FMB	114914	10/24/24	2,624.98 AMAZON CAPITAL SERVICES, INC
FMB	114915	10/24/24	2,048.43 ANDY MEADORS BRANDING, INC
FMB	114916	10/24/24	948.52 BEAR VALLEY ELECTRIC
FMB	114917	10/24/24	5,533.00 BEAR VALLEY PAVING
FMB	114918	10/24/24	123.31 BECKMAN COULTER INC
FMB	114919	10/24/24	36,949.25 BETA HEALTHCARE GROUP
FMB	114920	10/24/24	1,488.08 BIG BEAR CITY CSD
FMB	114921	10/24/24	.00 BIG BEAR FAMILY MEDICINE, INC
FMB	114922	10/24/24	260.84 BIO RAD LABORATORIES, INC.
FMB	114923	10/24/24	652.50 BLANCA RAMIREZ
FMB	114924	10/24/24	893.00 BREWD COFFEE SYSTEMS
FMB	114925	10/24/24	248.00 C&D TERMITE & PEST CONTROL
FMB	114926	10/24/24	1,358.94 CALIF TOOL & WELDING SUPPLY
FMB	114927	10/24/24	191,940.17 CALPERS1486578418
FMB	114928	10/24/24	7,391.50 CANON MEDICAL SYSTEMS USA, INC
FMB	114929	10/24/24	2,206.78 CARDINAL HEALTH
FMB	114930	10/24/24	4,375.41 CDW GOVERNMENT INC
FMB	114931	10/24/24	2,000.00 CLINICIANS TELEMED MED GROUP
FMB	114932	10/24/24	58,956.00 COSCO FIRE PROTECTION, INC
FMB	114933	10/24/24	55.76 COUNTY OF SAN BERNARDINO
FMB	114934	10/24/24	45.05 COUNTY OF SAN BERNARDINO
FMB	114935	10/24/24	69,125.98 CPSI/EVIDENT
FMB	114936	10/24/24	11,187.84 DELTA DENTAL OF CA
FMB	114937	10/24/24	2,944.69 DIRECT SUPPLY HEALTHCARE EQUIP
FMB	114938	10/24/24	15,000.00 ELEVATE EMERGENCY MEDICINE
FMB	114939	10/24/24	3,663.82 EMERALD TEXTILES
FMB	114940	10/24/24	1,068.00 EXTRA SPACE MANAGEMENT INC
FMB	114941	10/24/24	4,139.08 FISHER HEALTHCARE
FMB	114942	10/24/24	400.00 FRANK PIROLO
FMB	114943	10/24/24	15.00 FRONTIER COMM
FMB	114944	10/24/24	17,534.08 GATEWAY ACCEPTANCE CO.
FMB	114945	10/24/24	9,396.37 GRAINGER PARTS
FMB	114946	10/24/24	8,652.75 HOSPITAL ASSOC OF SO CALIF
FMB	114947	10/24/24	2,451.63 INSTRUMENTATION LABORATORY
FMB	114948	10/24/24	1,911.72 J AND J PRODUCE CO
FMB	114949	10/24/24	3,118.28 JIM SCHLENKER
FMB	114950	10/24/24	2,366.10 KERRI JEX
FMB	114951	10/24/24	3,774.37 LEASING ASSOC. BARRINGTON, INC
FMB	114952	10/24/24	451.00 MARSH & MCLENNAN AGENCY LLC
FMB	114953	10/24/24	34,543.34 MEDELY, INC.
FMB	114954	10/24/24	.00 VOIDED
FMB	114955	10/24/24	7,500.84 MEDLINE INDUSTRIES INC



RUN DATE:11/25/24  
TIME:13:24

BEAR VALLEY COMMUNITY  
CHECK REGISTER  
10/01/24 THRU 10/31/24

PAGE 8  
GLCKREG

BANK--CHECK-----				
CODE	NUMBER	DATE	AMOUNT	PAYEE
FMB	114956	10/24/24	105.25	MOUNTAIN WATER CO
FMB	114957	10/24/24	7,542.50	MURRAYS SALOON AND EATERY
FMB	114958	10/24/24	9,545.23	MUTUAL OF OMAHA
FMB	114959	10/24/24	6,134.92	NRC HEALTH
FMB	114960	10/24/24	2,022.67	OLYMPUS AMERICA INC.
FMB	114961	10/24/24	193.00	PTS COMMUNICATIONS
FMB	114962	10/24/24	1,038.79	RADWORKS LLC
FMB	114963	10/24/24	2,052.00	RAM HEALTHCARE CONSULTING GROU
FMB	114964	10/24/24	1,077.19	RELIAS LLC
FMB	114965	10/24/24	160.00	ROTARY CLUB OF BIG BEAR LAKE
FMB	114966	10/24/24	6,453.87	SOUTHWEST GAS CORPORATION
FMB	114967	10/24/24	7,308.60	STAPLES ADVANTAGE
FMB	114968	10/24/24	6,505.09	STAPLES PROMOTIONAL PRODUCTS
FMB	114969	10/24/24	6,411.06	STERIS CORPORATION
FMB	114970	10/24/24	1,950.00	STRIKE PRO TECH OF TEXAS, INC
FMB	114971	10/24/24	6,111.16	SYSKO RIVERSIDE INC
FMB	114972	10/24/24	125.00	T-SYSTEM, INC
FMB	114973	10/24/24	202.70	TAVOCA INC
FMB	114974	10/24/24	714.83	TEAMSTERS LOCAL 1932
FMB	114975	10/24/24	1,069.41	TRUMED FINANCIAL SERVICES - LB
FMB	114976	10/24/24	451.35	UNITED NURSES ASSOCIATION
FMB	114977	10/24/24	148.35	UNITED PARCEL SERVICE
FMB	114978	10/24/24	7,224.52	US FOOD SERVICE INC
FMB	114979	10/24/24	3,671.17	WAXIE SANITARY SUPPLY
FMB	114980	10/24/24	477.00	WELLSKY CORP
FMB	114981	10/24/24	1,297.00	WISCONSIN STE LAB HYGIENE
FMB *	114982	10/24/24	582.08	ZOLL MEDICAL CORP.
FMB	114984	10/31/24	8,531.49	AGILITI HEALTH, INC.
FMB	114985	10/31/24	269.28	AIRGAS USA,LLC
FMB	114986	10/31/24	561.07	AMAZON CAPITAL SERVICES, INC
FMB	114987	10/31/24	518.21	AMO SALES AND SERVICE, INC
FMB	114988	10/31/24	1,019.25	ANDY MEADORS BRANDING, INC
FMB	114989	10/31/24	1,189.56	APPLIED MEDICAL
FMB	114990	10/31/24	1,179.75	ARTHREX, INC
FMB	114991	10/31/24	460.20	AT&T MOBILITY LLC
FMB	114992	10/31/24	132.62	BEAR VALLEY ELECTRIC
FMB	114993	10/31/24	482.50	BELLA NATALIE CERVATES
FMB	114994	10/31/24	11,000.00	BENINK & SLAVENS, LLP
FMB	114995	10/31/24	.00	BIG BEAR URGENT CARE INC.
FMB	114996	10/31/24	87.92	BIO RAD LABORATORIES, INC.
FMB	114997	10/31/24	2,335.12	BRACCO DIAGNOSTICS INC
FMB	114998	10/31/24	145.00	C&D TERMITE & PEST CONTROL
FMB	114999	10/31/24	192.00	CALIF DEPT OF PUBLIC HEALTH
FMB	115000	10/31/24	180.00	CALIF TELEHEALTH NETWORK
FMB	115001	10/31/24	424.73	CALIF TOOL & WELDING SUPPLY
FMB	115002	10/31/24	8,460.78	CAREFUSION SOLUTIONS LLC
FMB	115003	10/31/24	685.42	CARLY BRONSON
FMB	115004	10/31/24	516.55	CDW GOVERNMENT INC
FMB	115005	10/31/24	11,181.24	CITY OF BIG BEAR LAKE
FMB	115006	10/31/24	1,239.50	CPSI/EVIDENT
FMB	115007	10/31/24	38,750.00	D CRITEL NURSING ANESTH INC

RUN DATE:11/25/24  
TIME:13:24

BEAR VALLEY COMMUNITY  
CHECK REGISTER  
10/01/24 THRU 10/31/24

PAGE 9  
GLCKREG

BANK--CHECK-----

CODE	NUMBER	DATE	AMOUNT	PAYEE
FMB	115008	10/31/24	530.28	DIANE LOPEZ
FMB	115009	10/31/24	134.10	DWP CITY OF BIG BEAR LAKE
FMB	115010	10/31/24	2,658.34	EMERALD TEXTILES
FMB	115011	10/31/24	251.10	EVA PIERCE
FMB	115012	10/31/24	1,839.76	FIDELITY SECURITY LIFE INS CO
FMB	115013	10/31/24	1,929.66	FISHER HEALTHCARE
FMB	115014	10/31/24	1,088.00	FRONTIER COMM
FMB	115015	10/31/24	1,515.83	FRONTIER COMMUNICATIONS
FMB	115016	10/31/24	11,683.10	GATEWAY ACCEPTANCE CO.
FMB	115017	10/31/24	807.11	GRAINGER PARTS
FMB	115018	10/31/24	554.87	HR DIRECT/GNEIL
FMB	115019	10/31/24	3,950.00	IBM
FMB	115020	10/31/24	240.03	J AND J PRODUCE CO
FMB	115021	10/31/24	2,800.00	JIM SCHLENKER
FMB	115022	10/31/24	1,689.93	KONICA MINOLTA
FMB	115023	10/31/24	.00	LEGALSHIELD
FMB	115024	10/31/24	2,500.00	MANIFEST MEDEX
FMB	115025	10/31/24	16,560.00	MEDELY, INC.
FMB	115026	10/31/24	.00	VOIDED
FMB	115027	10/31/24	8,168.05	MEDLINE INDUSTRIES INC
FMB	115028	10/31/24	27.18	MEGANN WELSH
FMB	115029	10/31/24	127.15	MILE HIGH SPORTS AND EQUIPMENT
FMB	115030	10/31/24	595.00	NICHOLAS O. ALIBERTI
FMB	115031	10/31/24	51.00	OJ'S DONUT HOUSE
FMB	115032	10/31/24	239.37	OLYMPUS AMERICA INC.
FMB	115033	10/31/24	2,780.93	ORTHO-CLINICAL DIAGNOSTICS INC
FMB	115034	10/31/24	513.82	PERFORMANCE HEALTH SUPPLY INC.
FMB	115035	10/31/24	740.92	POSITIVE PROMOTIONS INC
FMB	115036	10/31/24	231.60	PTS COMMUNICATIONS
FMB	115037	10/31/24	650.00	QUANTA DIALYSIS TECHNOLOGIES
FMB	115038	10/31/24	81,504.17	QUINN COMPANY
FMB	115039	10/31/24	2,123.25	RAM HEALTHCARE CONSULTING GROU
FMB	115040	10/31/24	73.43	SCOTT SURICO
FMB	115041	10/31/24	181.34	SIEMENS HEALTHCARE DIAGNOSTICS
FMB	115042	10/31/24	266.26	SMILEMAKERS
FMB	115043	10/31/24	874.35	STAPLES ADVANTAGE
FMB	115044	10/31/24	690.36	SURGICAL PRODUCT SOLUTIONS LLC
FMB	115045	10/31/24	1,598.24	SYSCO RIVERSIDE INC
FMB	115046	10/31/24	6,795.43	T-SYSTEM, INC
FMB	115047	10/31/24	712.53	TEAMSTERS LOCAL 1932
FMB	115048	10/31/24	55.37	TRI ANIM HEALTH SERVICES INC
FMB	115049	10/31/24	1,249.80	TRONEX INTERNATIONAL, INC
FMB	115050	10/31/24	4,492.54	TUFF SHED INC
FMB	115051	10/31/24	551.19	UNITED NURSES ASSOCIATION
FMB	115052	10/31/24	2,792.34	US FOOD SERVICE INC
FMB	115053	10/31/24	321.10	WAXIE SANITARY SUPPLY
FMB	115054	10/31/24	1,000.00	WILLIAM A. GIAMARINO
FMB	115055	10/31/24	100.01	ZOLL MEDICAL CORP.
TOTALS:			2,357,680.89	