



**BOARD OF DIRECTORS
FINANCE COMMITTEE MEETING AGENDA
TUESDAY, JUNE 03, 2025**

**1:00 PM – OPEN SESSION – MAIN CONFERENCE ROOM
41870 GARSTIN DRIVE, BIG BEAR LAKE, CA 92315**

Copies of staff reports or other written documentation relating to each item of business referred to on this agenda are on file in the Chief Executive Officer's Office and are available for public inspection or purchase at 10 cents per page with advance written notice. In compliance with the Americans with Disabilities Act and Government Code Section 54954.2, if you need special assistance to participate in a District meeting or other services offered by the District, please contact Administration (909) 878-8214. Notification at least 48 hours prior to the meeting or time when services are needed will assist the District staff in assuring that reasonable arrangements can be made to provide accessibility to the meeting or service. **DOCUMENTS RELATED TO OPEN SESSION AGENDAS (SB 343)** Any public record, relating to an open session agenda item, that is distributed within 72 hours prior to the meeting is available for public inspection at the public counter located in the Administration Office, located at 41870 Garstin Drive, Big Bear Lake, CA 92315. For questions regarding any agenda item, contact Administration at (909) 878-8214.

OPEN SESSION

1. **CALL TO ORDER** **Jack Briner, Treasurer**
2. **ROLL CALL** **Shelly Egerer, Executive Assistant**
3. **ADOPTION OF AGENDA***
4. **PUBLIC FORUM FOR OPEN SESSION**
Opportunity for members of the public to address the Committee on Open Session items.
(Government Code Section 54954.3, there will be a three (3) minute limit per speaker. Any report or data required at this time must be requested in writing, signed and turned into Administration. Please state your name and city of residence.)
5. **DIRECTORS' COMMENTS**
6. **APPROVAL OF MINUTES***
A. May 06, 2025
7. **OLD BUSINESS***
 - None
8. **NEW BUSINESS***
 - None
9. **PRESENTATION AND REVIEW OF FINANCIAL STATEMENTS***
A. April 2025
10. **ADJOURNMENT*** *** Denotes Actions Items**

**BEAR VALLEY COMMUNITY HEALTHCARE DISTRICT
BOARD OF DIRECTORS
FINANCE COMMITTEE MEETING MINUTES
41870 GARSTIN DR., BIG BEAR LAKE, CA 92315
MAY 06, 2025**

MEMBERS Jack Briner, Treasurer Evan Rayner, CEO
PRESENT: Steven Baker, President Shelly Egerer, Executive Assistant
Jim Schlenker, CFO

STAFF: None

OTHER: None

**COMMUNITY
MEMBERS:** None

ABSENT: Kerri Jex, CNO

OPEN SESSION

1. CALL TO ORDER:

Board Member Briner called the meeting to order at 1:00 p.m.

2. ROLL CALL:

Jack Briner and Steven Baker were present. Also present were Evan Rayner, CEO, Jim Schlenker, CFO and Shelly Egerer, Executive Assistant.

3. ADOPTION OF AGENDA:

President Baker motioned to adopt the May 06, 2025 Finance Committee Meeting Agenda as presented. Second by Board Member Briner to adopt the May 06, 2025 Finance Committee Meeting Agenda as presented. Board Member Briner called for a vote. A vote in favor of the motion was unanimously approved.

- President Baker - yes
- Board Member Briner - yes

4. PUBLIC FORUM FOR OPEN SESSION:

Board Member Briner opened the Hearing Section for Public Comment on Open Session items at 1:00 p.m. Hearing no request to address the Finance Committee, Board Member Briner closed the Hearing Section at 1:00 p.m.

5. DIRECTOR'S COMMENTS:

- None

6. APPROVAL OF MINUTES:

A. April 01, 2025

President Baker motioned to approve the April 01, 2025 minutes as presented. Second by Board Member Briner to approve the April 01, 2025 and minutes as presented. Board Member Briner called for a vote. A vote in favor of the motion was unanimously approved.

- President Baker - yes
- Board Member Briner- yes

7. OLD BUSINESS:

- None

8. NEW BUSINESS*

- None

9. PRESENTATION AND REVIEW OF FINANCIAL STATEMENTS*

A. March 2025 Finances:

- Mr. Schlenker reported the following information:
 - Cash on hand \$2,339,036
 - Cash Collections is \$2,894,344
 - Loss for the month of \$357,000
 - Days cash on hand 356
 - Total Surplus of \$344,766
 - Patient revenue was 1.8% higher
 - Total patient days were less than budget
 - ER was below budget
 - Contractual allowances for the month were under budget
 - Charity cases are higher than normal but still under budget
 - Total operating revenue exceeded the current month; target by \$111k
 - Registry continues
 - 4.5% rate w/LAIF
 - Contractual allowances, denials at \$1.2 million
 - Continue to look at contractual w/commercial insurance
- Mr. Schlenker reported that the budget packets have gone out and we will begin the process with the managers and once completed we will present to the Board.
- Mr. Rayner reported that Heritage is working with us on agreement; this is due to the new physician group that has begun in the community.

President Baker motioned to approve the March 2025 Finance Report as presented. Second by Board Member Briner to approve the March 2025 Finance Report as presented. Board Member Briner called for a vote. A vote in favor of the motion was unanimously approved.

- President Baker - yes
- Board Member Briner- yes

10. ADJOURNMENT*

President Baker motioned to adjourn the meeting at 1:49 p.m. Second by Board Member Briner to adjourn the meeting. Board Member Briner called for a vote. A vote in favor of the motion was unanimously approved.

- President Baker - yes
- Board Member Briner- yes



Finance Report
April 2025 Results

Summary for April 2025

- Cash on hand \$ 3,083,076
- *Cash Collections* \$ 3,154,901
- Investments \$ 19,573,172
- Board Designated Funds \$ 25,000,000
- Days Cash on hand, including investments with LAIF – 377
- Operating **Loss** for the month of \$619,445 vs projected Loss of \$615,388
- Total **Surplus** of \$274,189 (vs a budgeted Surplus of \$80,612)
- Total Patient Revenue was 9.8% Higher than Budget for the month
- Revenue deductions were at 49% of total revenue (9.6% higher than budget-See narrative)
- Net Patient Revenue was 10.1% more than budget
- Total Expenses were 7.6% more than budget



April 2025 Financial Results

Key Statistics

Total Patient Days exceeded budget (779 vs 741). Our Acute and Swing average daily census was 5.4. Emergency Room visits were slightly above the monthly target (871 vs 838). Surgical procedures were well below the monthly target (5 vs 22). Primary care visits were well above their target (2,329 vs 2,000) as were specialty clinic visits (346 vs 294). Both primary care and specialty clinic visits continue to exceed their year-to-date targets by 2,148 and 470 respectively. Lab procedures (7,763 vs 6,860) as were Imaging (combined modalities of 1,535 vs 1,403) and only X-Ray procedures were below its monthly target by 13 procedures.

Financial Highlights

Overall revenues for the month (\$5,978,474 vs \$5,443,094) exceeded the monthly target with inpatient revenue (by \$32,195), Outpatient Revenue (by \$228,287), Clinic (by \$79,473) Emergency Room (by \$180,154) and Skilled Nursing (by \$15,271).

Total Revenue Deductions were 9.6% above budget for the month (49.3% of gross revenue. Days in accounts receivable decreased from 77.7 to 76.7 with cash collections of \$3,154,901. Increased revenue and collection activity led to higher bad debt reserves (by \$283K). Denial write offs exceeded budget for the month (by \$48K). Administrative adjustments were \$38K more than projected. Charity Care cases were also high (\$52,790 vs \$14,860). Self-pay accounts receivable over 120 days old increased to 2.73 million.

The total accounts receivable over 120 days old increased to \$6,477 million or 37.4% of the total accounts receivable. Continued meetings with Trubridge leadership are occurring to address the plan to correct this issue and ensure front-end processes are in place to maintain a reasonable collection rate and positive impact to the overall days in accounts receivable. While the aged accounts receivable over 120 days continue to decline (from 44.8% of total a few months ago to 37.4% as of the end of April), continued focus remains as there is a direct impact to our revenue deductions (increased bad debt, charity and denials).

Contractual allowances for the month were below the target. Like last month, there was an additional reduction of contractual allowances in the amount of \$500,000 related to a portion of supplemental funding realized.



Total operating revenue exceeded the current month's target by \$260K.

Total Expenses exceeded the current month's target (by \$264K). The main areas of variance included Salaries and Benefits including registry (over by \$142K) which included benefits (by \$14K) and Registry (by \$19K) that exceeded budget as well as salary costs which were over budget (by \$108K), Professional fees (over by \$19K), Supplies (by \$10K), Utilities (by \$16K), Repairs and Maintenance (by \$6K), Purchased Services (by \$53K), Dues and Subscriptions (by \$12K). Other Expenses were under by \$8K.

Salaries were over our budget projection (by \$108K) as was Registry (\$86K vs \$67K). The total salaries, benefits and registry costs are under budget for the year by \$32K with Salaries (by \$118K) and Benefits (by \$138K) under their targets and Registry costs exceeding its year-to-date target (by \$289K). Also, we have been able to spend \$400K less in Registry as compared to the same ten month period last year.

Professional Fees, while over budget for the month, were lower than in the previous month by \$15K.

Supplies included additional supplies related to our 340B Pharmacy program (\$22,354).

Purchased services included \$15,321 in legal fees, \$21,097 in contract labor for our Skilled Nursing Facility, \$3,750 for needed Respiratory Therapy staffing, and some costs associated with property clean up (\$1,331).

Utilities were higher than the previous month and over budget primarily due to higher electricity cost and usage (\$35k vs \$28k in March) as rates increased from Bear Valley Electric.

Repairs and Maintenance included costs for new wall protection in the Skilled Nursing Facility (\$4,032) and some equipment repairs in Radiology (\$8,202).

Other expenses were under budget for the month (by \$8K) but did include costs for an exam table (\$2,985), a vital signs machine (\$3,727), additional Marketing costs (\$18,780), and training related to our Skilled Nursing Facility (\$2,863).

Full Time Equivalent staffing (for BVCHD employed staff) was at 228.7 vs a current month target of 213.5. As a reminder, there are 12.1 ~~full~~ fte's related to the "Mom and Dad's" Grant program included in our staffing calculations.



Other non-operating revenue for the month totaled \$893,634 and included county tax revenue (\$229,167), quality payments from Molina (\$90,439 and \$31,773), IEHP (\$4,424), and Beta Healthcare Group (\$30,439) as well as some rental income, interest expense, rental income and miscellaneous other revenue (copy fees, etc.).

This combination led to a loss from Operations of \$619,445 as compared to an expected loss of \$615,388.

Our Total Surplus for the month was \$274,189 versus an expected surplus of \$80,612.

On a year-to-date basis, we have an overall loss of \$56,562.

Our Operating Cash and Investments totaled \$47,656,248 with days of cash on hand of 378 and days in accounts receivable of 76.7.

Financial Highlights—Hospital
STATEMENT OF OPERATIONS

		A	B	C	D	E	F	G	H	I	J
			Current Month					Year-to-Date			
		FY 23/24	FY 24/25		VARIANCE		FY 23/24	FY 24/25		VARIANCE	
		Actual	Actual	Budget	Amount	%	Actual	Actual	Budget	Amount	%
1	Total patient revenue	5,845,141	5,978,474	5,443,094	535,379	9.8%	58,073,853	59,893,330	61,113,643	(1,220,313)	-2.0%
2	Total revenue deductions	3,389,812	2,944,612	2,687,874	256,738	9.6%	28,677,944	31,847,769	30,169,711	1,678,057	5.6%
3	% Deductions	58%	49%	49%	49%		49%	53%	49%		
4	Net Patient Revenue	2,455,329	3,033,862	2,755,220	278,641	10.1%	29,395,909	28,045,562	30,943,932	(2,898,370)	-9.4%
5	% Net to Gross	42%	51%	51%			51%	47%	51%		
6	Other Revenue	172,425	69,179	88,090	(18,911)	-21.5%	873,192	1,163,253	882,984	280,269	31.7%
7	Total Operating Revenue	2,627,755	3,103,041	2,843,310	259,730	9.1%	30,269,101	29,208,815	31,826,916	(2,618,101)	-8.2%
8	Total Expenses	3,606,243	3,722,486	3,458,699	263,787	7.6%	32,923,061	35,484,604	35,178,605	305,999	0.9%
9	% Expenses	62%	62%	64%			57%	59%	58%		
10	Surplus (Loss) from Operations	(978,488)	(619,445)	(615,388)	(4,057)	-0.7%	(2,653,960)	(6,275,789)	(3,351,689)	(2,924,100)	-87.2%
11	% Operating margin	-17%	-10%	-11%			-5%	-10%	-5%		
12	Total Non-operating	1,136,506	893,634	696,000	197,634	28.4%	4,332,445	6,219,227	6,960,003	(740,776)	-10.6%
13	Surplus/(Loss)	158,018	274,189	80,612	193,577	-240.1%	1,678,485	(56,562)	3,608,314	(3,664,876)	101.6%
14	% Total margin	3%	5%	1%			3%	0%	6%		

BALANCE SHEET

		A	B	C	D	E
		April	April	March		
		FY 23/24	FY 24/25	FY 24/25	VARIANCE	
					Amount	%
15	Gross Accounts Receivables	15,043,607	16,141,098	17,001,101	(860,003)	-5.1%
16	Net Accounts Receivables	5,607,196	5,684,709	6,297,633	(612,924)	-9.7%
17	% Net AR to Gross AR	37%	35%	37%		
18	Days Gross AR	73	76.7	77.7	(1.0)	-1.2%
19	Cash Collections	2,794,147	3,154,901	2,894,344	260,557	9.0%
21	Investments and Board Designated Funds	42,552,534	44,573,172	42,010,270	2,562,902	6.1%
22	Cash on hand	2,160,579	3,083,076	2,329,036	754,040	32.4%
23	Total Cash & Invest	44,713,113	47,656,248	44,339,306	3,316,942	7.5%
24	Days Cash & Invest	391.9	377.5	356.4	21	5.9%
	Total Cash and Investments	44,713,113	47,656,248	44,339,306		
	Increase Current Year vs. Prior Year		2,943,135			

Statement of Operations											
		A	B	C	D	E	F	G	H	I	J
		Current Month				Year-to-Date					
		FY 23/24	FY 24/25		VARIANCE		FY 23/24	FY 24/25		VARIANCE	
		Actual	Actual	Budget	Amount	%	Actual	Actual	Budget	Amount	%
Gross Patient Revenue											
1	Inpatient	560,787	500,157	467,963	32,195	6.9%	4,643,812	5,141,941	5,765,102	(623,161)	-10.8%
2	Outpatient	1,228,018	1,218,011	989,724	228,287	23.1%	9,828,983	10,182,482	10,101,720	80,762	0.8%
3	Clinic Revenue	352,151	413,150	333,677	79,473	23.8%	2,990,610	3,550,479	3,047,203	503,275	16.5%
4	Emergency Room	3,296,493	3,414,989	3,234,835	180,154	5.6%	36,464,133	37,065,957	37,974,904	(908,947)	-2.4%
5	Skilled Nursing Facility	407,693	432,167	416,896	15,271	3.7%	4,146,315	3,952,471	4,224,714	(272,243)	-6.4%
6	Total patient revenue	5,845,141	5,978,474	5,443,094	535,379	9.8%	58,073,853	59,893,330	61,113,643	(1,220,313)	-2.0%
Revenue Deductions											
7	Contractual Allow	3,170,394	2,227,926	2,332,176	(104,250)	-4.5%	25,679,554	27,030,665	26,177,222	853,443	3.3%
8	Contractual Allow PY	-	-	-	-	#DIV/O!	-	-	-	-	#DIV/O!
9	Charity Care	10,514	28,999	14,860	14,139	95.1%	192,249	358,064	166,797	191,267	114.7%
10	Administrative	9,747	52,790	14,714	38,076	258.8%	48,936	426,947	165,157	261,790	158.5%
11	Policy Discount	9,946	9,352	21,871	(12,519)	-57.2%	127,729	123,980	245,487	(121,507)	-49.5%
12	Employee Discount	7,196	5,077	14,922	(9,845)	-66.0%	57,155	56,195	167,487	(111,292)	-66.4%
13	Bad Debts	160,490	500,498	217,202	283,296	130.4%	1,790,224	2,476,362	2,437,956	38,406	1.6%
14	Denials	104,327	119,971	72,129	47,842	66.3%	782,097	1,375,556	809,605	565,951	69.9%
15	Total revenue deductions	3,389,812	2,944,612	2,687,874	256,738	9.6%	28,677,944	31,847,769	30,169,711	1,678,057	5.6%
16	Net Patient Revenue	2,455,329	3,033,862	2,755,220	278,641	10.1%	29,395,909	28,045,562	30,943,932	(2,898,370)	-9.4%
	revenue including Prior Year adjustment	58.0%	49.3%	49.4%	-0.1%		49.4%	53.2%	49.4%	3.8%	
										0.0%	
17	Other Revenue	172,425	69,179	88,090	(18,911)	-21.5%	873,192	1,163,253	882,984	280,269	31.7%
18	Total Operating Revenue	2,627,755	3,103,041	2,843,310	259,730	9.1%	30,269,101	29,208,815	31,826,916	(2,618,101)	-8.2%
Expenses											
19	Salaries	1,332,243	1,591,396	1,482,933	108,463	7.3%	13,146,757	14,899,810	15,017,776	(117,966)	-0.8%
20	Employee Benefits	450,613	527,196	512,806	14,390	2.8%	4,437,663	5,018,252	5,156,403	(138,151)	-2.7%
21	Registry	167,258	85,836	67,123	18,713	27.9%	1,400,430	1,034,418	745,821	288,597	38.7%
22	Salaries and Benefits	1,950,114	2,204,428	2,062,862	141,566	6.9%	18,984,849	20,952,479	20,920,000	32,479	0.2%
23	Professional fees	340,536	309,363	290,037	19,326	6.7%	2,415,568	2,776,949	2,872,585	(95,636)	-3.3%
24	Supplies	244,757	210,027	199,889	10,138	5.1%	2,048,481	2,091,456	2,077,387	14,069	0.7%
25	Utilities	58,741	69,257	53,489	15,768	29.5%	540,585	582,767	597,480	(14,713)	-2.5%
26	Repairs and Maintenance	59,358	67,719	61,935	5,784	9.3%	619,221	649,628	620,552	29,076	4.7%
27	Purchased Services	585,637	527,846	474,960	52,886	11.1%	4,940,318	5,332,745	4,929,532	403,213	8.2%
28	Insurance	89,104	105,854	103,607	2,247	2.2%	955,963	1,068,207	1,036,070	32,137	3.1%
29	Depreciation	78,149	78,149	67,732	10,417	15.4%	859,640	781,490	677,320	104,170	15.4%
30	Rental and Leases	28,329	24,204	22,689	1,515	6.7%	221,463	242,185	226,890	15,295	6.7%
32	Dues and Subscriptions	23,460	29,508	17,544	11,964	68.2%	185,809	203,782	175,288	28,494	16.3%
33	Other Expense.	148,056	96,131	103,955	(7,825)	-7.5%	1,151,163	802,917	1,045,501	(242,584)	-23.2%
34	Total Expenses	3,606,243	3,722,486	3,458,699	263,787	7.6%	32,923,061	35,484,604	35,178,605	305,999	0.9%
35	Surplus (Loss) from Operations	(978,488)	(619,445)	(615,388)	(4,057)	-0.7%	(2,653,960)	(6,275,789)	(3,351,689)	(2,924,100)	-87.2%
Non-Operating Income											
36	Tax Revenue	215,833	229,167	229,167	0	0.0%	2,158,330	2,413,355	2,291,667	121,688	5.3%
38	Other non-operating	516,000	664,883	474,167	190,716	40.2%	742,939	2,470,355	3,391,667	(921,311)	-27.2%
	Interest Income	411,797	6,377	-	6,377	#DIV/O!	1,496,112	1,406,602	1,350,000	56,602	4.2%
	Interest Expense	(7,124)	(6,792)	(7,333)	541	-7.4%	(64,936)	(71,086)	(73,330)	2,244	-3.1%
	IGT Expense	-	-	-	-	#DIV/O!	-	-	-	-	#DIV/O!
39	Total Non-operating	1,136,506	893,634	696,000	197,634	28.4%	4,332,445	6,219,227	6,960,003	(740,776)	-10.6%
40	Surplus/(Loss)	158,018	274,189	80,612	193,577	-240.1%	1,678,485	(56,562)	3,608,314	(3,664,876)	101.6%

Bear Valley Community Healthcare District Financial Statements														
Current Year Trending Statement of Operations														
A Statement of Operations—CURRENT YEAR 2025														8.8%
		1	2	3	4	5	6	7	8	9	10	11	12	
		July	Aug	Sept	Oct	Nov	Dec	Jan	Feb	Mar	Apr	May	June	YTD
Gross Patient Revenue														
1	Inpatient	548,673	501,640	286,439	474,566	545,975	579,035	672,645	445,001	587,809	500,157			5,141,941
2	Outpatient	1,036,654	1,029,143	969,447	1,132,094	945,399	883,837	995,030	1,001,722	971,145	1,218,011			10,182,482
3	Clinic	369,463	345,846	282,583	379,501	332,839	364,070	365,624	357,944	339,458	413,150			3,550,479
4	Emergency Room	4,069,032	3,609,764	2,777,653	2,950,438	3,033,121	4,389,623	4,532,984	3,972,969	4,315,383	3,414,989			37,065,957
5	Skilled Nursing Facility	411,287	380,194	360,864	434,209	406,891	381,820	383,810	357,084	404,145	432,167			3,952,471
6	Total patient revenue	6,435,109	5,866,588	4,676,986	5,370,808	5,264,225	6,598,385	6,950,094	6,134,720	6,617,941	5,978,474	-	-	59,893,330
Revenue Deductions														
	C/A	0.49	0.62	0.41	0.51	0.51	0.54	0.31	0.41	0.38	0.37	#DIV/0!	#DIV/0!	0.45
7	Contractual Allow	3,157,929	3,628,721	1,916,154	2,713,778	2,658,859	3,543,688	2,154,717	2,513,937	2,515,858	2,227,926			27,030,665
8	Contractual Allow PY	-												-
9	Charity Care	-	130,055	19,387	2,654	28,687	36,152	28,013	33,411	50,707	28,999			358,064
10	Administrative	136,547	30,025	28,806	93,848	10,251	11,430	1,804	593	60,851	52,790			426,947
11	Policy Discount	10,047	14,347	11,708	12,474	12,072	12,667	12,086	12,633	16,594	9,352			123,980
12	Employee Discount	7,983	7,545	3,795	6,646	6,142	7,526	2,309	7,474	1,699	5,077			56,195
13	Bad Debts	179,539	(189,644)	240,226	182,059	227,750	(1,897)	504,023	361,466	472,343	500,498			2,476,362
14	Denials	186,795	281,494	114,225	73,372	105,869	213,588	144,743	65,883	69,616	119,971			1,375,556
15	Total revenue deductions	3,677,939	3,902,543	2,334,302	3,084,830	3,049,629	3,823,154	2,847,695	2,995,397	3,187,668	2,944,612	-	-	31,847,769
16	Net Patient Revenue	2,757,170	1,964,045	2,342,684	2,285,978	2,214,596	2,775,232	4,102,399	3,139,323	3,430,273	3,033,862	-	-	28,045,562
	net / tot pat rev	42.8%	33.5%	50.1%	42.6%	42.1%	42.1%	59.0%	51.2%	51.8%	50.7%	#DIV/0!	#DIV/0!	46.8%
		2.9%	4.8%	2.4%	1.4%	2.0%	3.2%	2.1%	1.1%	1.1%	2.0%	#DIV/0!	#DIV/0!	2.3%
17	Other Revenue	70,254	73,692	127,255	156,145	213,532	172,373	57,010	164,103	59,710	69,179			1,163,253
18	Total Operating Revenue	2,827,424	2,037,737	2,469,939	2,442,123	2,428,128	2,947,604	4,159,409	3,303,427	3,489,983	3,103,041	-	-	29,208,815
Expenses														
19	Salaries	1,201,654	1,668,615	1,255,689	1,526,254	1,427,622	1,583,253	1,486,264	1,493,626	1,665,436	1,591,396			14,899,810
20	Employee Benefits	385,921	582,963	470,237	486,211	467,412	499,616	542,389	505,290	551,017	527,196			5,018,252
21	Registry	99,973	119,575	93,966	107,449	97,509	126,527	137,842	85,073	80,668	85,836			1,034,418
22	Salaries and Benefits	1,687,547	2,371,153	1,819,892	2,119,913	1,992,543	2,209,396	2,166,496	2,083,989	2,297,122	2,204,428	-	-	20,952,479
23	Professional fees	234,004	300,107	257,745	273,757	270,357	253,557	293,646	258,914	325,502	309,363			2,776,949
24	Supplies	193,404	208,669	224,409	194,220	194,825	202,771	234,014	217,408	211,709	210,027			2,091,456
25	Utilities	62,144	46,153	58,555	52,093	53,955	59,623	55,653	66,474	58,861	69,257			582,767
26	Repairs and Maintenance	64,539	75,161	65,547	74,871	63,552	75,441	48,326	61,423	53,049	67,719			649,628
27	Purchased Services	424,771	399,488	490,040	466,708	463,935	475,399	617,686	882,198	584,674	527,846			5,332,745
28	Insurance	108,112	106,836	107,206	106,212	105,685	105,685	105,685	111,247	105,685	105,854			1,068,207
29	Depreciation	78,149	78,149	78,149	78,149	78,149	78,149	78,149	78,149	78,149	78,149			781,490
30	Rental and Leases	17,135	24,134	24,629	27,651	25,866	20,651	23,946	27,901	26,068	24,204			242,185
32	Dues and Subscriptions	20,633	20,467	16,363	13,440	24,250	16,450	21,414	21,160	20,097	29,508			203,782
33	Other Expense.	102,412	70,319	76,057	126,683	47,006	68,472	39,252	89,604	86,982	96,131			802,917
34	Total Expenses	2,992,850	3,700,637	3,218,590	3,533,697	3,320,120	3,565,594	3,684,267	3,898,467	3,847,896	3,722,486	-	-	35,484,604
35	Surplus (Loss) from Operations	(165,425)	(1,662,900)	(748,651)	(1,091,574)	(891,992)	(617,989)	475,141	(595,040)	(357,914)	(619,445)	-	-	(6,275,789)
36	Non-Operating Income													
37	Tax Revenue	350,855	229,167	229,167	229,167	229,167	229,167	229,167	229,167	229,167	229,167			2,413,355
38	Other non-operating	319,388	9,108	152,556	556,907	5,662	448,411	276,791	20,955	15,695	664,883			2,470,355
	Interest Income	772	211	484,545	618	407	447,476	1,061	319	464,814	6,377			1,406,602
	Interest Expense	(8,418)	(7,243)	(7,083)	(6,957)	(6,831)	(6,712)	(7,087)	(6,965)	(6,996)	(6,792)			(71,086)
	IGT Expense													-
39	Total Non-operating	662,597	231,243	859,185	779,734	228,405	1,118,341	499,932	243,476	702,680	893,634	-	-	6,219,227
40	Surplus/(Loss)	497,172	(1,431,657)	110,534	(311,840)	(663,587)	500,352	975,073	(351,564)	344,766	274,189	-	-	(56,562)

2024-2025 Actual BS												
BALANCE SHEET												
	July	Aug	Sept	Oct	Nov	Dec	Jan	Feb	Mar	Apr	May	June
ASSETS:												
Current Assets												
Cash and Cash Equivalents (Includes CD's)	3,533,830	1,323,001	2,281,052	1,673,924	2,293,446	3,187,862	2,552,866	1,919,498	2,329,036	3,083,076		
Gross Patient Accounts Receivable	15,292,129	14,332,026	13,484,606	13,051,469	13,113,478	14,450,324	16,308,599	17,116,870	17,001,101	16,141,098		
Less: Reserves for Allowances & Bad Debt	10,438,332	9,896,190	9,217,063	8,787,091	8,662,431	9,519,921	10,200,193	10,675,128	10,703,467	10,456,389		
Net Patient Accounts Receivable	4,853,797	4,435,836	4,267,543	4,264,378	4,451,047	4,930,403	6,108,406	6,441,742	6,297,633	5,684,709	0	0
Tax Revenue Receivable												
Other Receivables	542,125	602,584	565,558	368,577	2,955,502	2,945,966	-3,882,705	-4,840,487	-3,711,304	-4,321,727		
Inventories	266,291	274,891	288,935	285,184	320,251	322,226	347,549	351,793	360,360	359,079		
Prepaid Expenses	1,307,868	1,245,576	1,160,868	1,155,960	1,019,379	970,327	884,497	792,371	643,684	587,326		
Due From Third Party Payers	0	0										
Due From Affiliates/Related Organizations	0	0										
Other Current Assets	2,750,000	2,749,865	2,748,665	2,748,665	2,385,588	1,105,533	1,037,349	1,053,164	881,547	-11,094		
Total Current Assets	13,253,911	10,631,752	11,312,621	10,496,688	13,425,213	13,462,318	7,047,963	5,718,081	6,800,957	5,381,370	0	0
Assets Whose Use is Limited												
Investments	40,888,786	40,888,786	40,373,142	15,373,142	11,673,142	12,120,270	18,370,270	18,370,270	17,010,270	19,573,172		
Board Designated Funds	0	0	0	25,000,000	25,000,000	25,000,000	25,000,000	25,000,000	25,000,000	25,000,000		
Other Limited Use Assets	133,608	133,608	133,608	133,608	133,608	133,608	133,608	133,608	133,608	133,608		
Total Limited Use Assets	41,022,394	41,022,394	40,506,750	40,506,750	36,806,750	37,253,878	43,503,878	43,503,878	42,143,878	44,706,780	0	0
Property, Plant, and Equipment												
Land and Land Improvements	4,216,685	4,201,210	4,216,685	4,216,685	4,216,685	4,216,685	4,216,685	4,216,685	4,216,685	4,216,685		
Building and Building Improvements	9,618,188	9,618,188	9,683,371	9,683,371	9,784,775	9,784,775	9,784,775	9,784,775	9,799,520	9,807,328		
Equipment	15,815,379	18,418,736	18,526,451	18,746,342	18,713,685	18,824,492	18,808,694	18,994,548	19,027,118	19,244,698		
Construction In Progress	4,059,556	1,462,628	1,462,628	1,485,293	1,490,516	1,492,674	1,493,444	1,668,209	1,668,209	1,605,035		
Capitalized Interest												
Gross Property, Plant, and Equipment	33,709,808	33,700,763	33,889,135	34,131,690	34,205,661	34,318,626	34,303,598	34,664,216	34,711,532	34,873,746	0	0
Less: Accumulated Depreciation	20,245,936	20,324,085	20,402,233	20,480,383	20,558,532	20,636,681	20,714,830	20,807,972	20,886,121	20,964,270		
Net Property, Plant, and Equipment	13,463,872	13,376,678	13,486,902	13,651,307	13,647,130	13,681,945	13,588,768	13,856,245	13,825,411	13,909,476	0	0
TOTAL UNRESTRICTED ASSETS	67,740,176	65,030,823	65,306,273	64,654,745	63,879,093	64,398,140	64,140,610	63,078,203	62,770,246	63,997,626	0	0
Restricted Assets	0	0	0	0	0	0	0	0	0	0	0	0
TOTAL ASSETS	67,740,176	65,030,823	65,306,273	64,654,745	63,879,093	64,398,140	64,140,610	63,078,203	62,770,246	63,997,626	0	0

LIABILITIES:	0												
Current Liabilities													
Accounts Payable	1,829,377	784,840	1,107,722	773,316	833,809	831,708	566,115	1,055,656	671,043	1,129,695			
Notes and Loans Payable													
Accrued Payroll	1,157,795	838,342	810,564	1,080,382	1,204,792	1,437,371	791,087	833,871	1,033,660	1,201,460			
Patient Refunds Payable													
Due to Third Party Payers (Settlements)	3,698,698	3,703,206	3,707,714	3,733,422	3,737,930	3,742,733	3,461,225	506,373	276,715	452,074			
Advances From Third Party Payers													
Current Portion of Def Rev - Txs,	2,750,000	2,520,833	2,291,667	2,062,500	1,833,333	1,604,167	1,375,000	1,252,088	1,251,450	1,559,413			
Current Portion - LT Debt	45,000	45,000	45,000	45,000	45,000	45,000	45,000	45,000	45,000	45,000			
Current Portion of AB915													
Other Current Liabilities (Accrued Interest & Accrued Other	174,649	485,603	580,073	508,431	436,122	493,703	683,650	910,407	681,240	533,006			
Total Current Liabilities	9,655,519	8,377,823	8,542,739	8,203,051	8,090,985	8,154,681	6,922,077	4,603,395	3,959,109	4,920,648	0	0	
Long Term Debt													
USDA Loan													
Leases Payable	0	0	0	0	0	0	0	0	0	0	0	0	
Less: Current Portion Of Long Term Debt	-2,640,000	-2,640,000	-2,640,000	-2,640,000	-2,640,000	-2,595,000	-2,595,000	-2,595,000	-2,595,000	-2,595,000	0	0	
Total Long Term Debt (Net of Current)	2,640,000	2,640,000	2,640,000	2,640,000	2,640,000	2,595,000	2,595,000	2,595,000	2,595,000	2,595,000	0	0	
Other Long Term Liabilities													
Deferred Revenue	0	0	0	0	0	0	0	0	0	0	0	0	
Other	0	0	0	0	0								
Total Other Long Term Liabilities	0	0	0	0	0	0	0	0	0	0	0	0	
TOTAL LIABILITIES	12,295,519	11,017,823	11,182,739	10,843,051	10,730,985	10,749,681	9,517,077	7,198,395	6,554,109	7,515,648	0	0	
Fund Balance													
Unrestricted Fund Balance	54,947,486	55,444,657	54,013,000	54,123,535	53,811,694	53,148,107	53,648,459	56,231,373	55,871,371	56,207,789			
Temporarily Restricted Fund Balance		0				0							
Equity Transfer from FRHG	0	0				0							
Net Revenue/(Expenses)	497,172	-1,431,657	110,534	-311,841	-663,587	500,352	975,073	-351,565	344,766	274,189			
TOTAL FUND BALANCE	55,444,658	54,013,000	54,123,534	53,811,694	53,148,107	53,648,459	54,623,532	55,879,808	56,216,137	56,481,978	0	0	
TOTAL LIABILITIES & FUND BALANCE	67,740,177	65,030,823	65,306,273	64,654,745	63,879,092	64,398,141	64,140,609	63,078,203	62,770,246	63,997,626	0	0	

Bear Valley Community	Fiscal Year	FYE 6-30-25								
AR by Financial Class	Jul-24	Aug-24	Sep-24	Oct-24	Nov-24	Dec-24	Jan-25	Feb-25	Mar-25	Apr-25
Medicare	2,334,095	2,121,815	1,456,030	1,760,244	1,294,456	1,526,822	1,857,610	1,851,655	2,163,467	1,971,989
Medicaid	3,266,485	3,655,865	3,789,232	3,648,700	3,777,193	4,699,166	4,472,864	4,750,317	4,671,421	4,300,195
Blue Cross	752,253	748,833	552,966	532,023	675,624	935,292	1,206,075	1,094,260	1,162,045	896,566
Commercial Insurance	4,884,202	4,567,247	3,989,337	3,767,042	4,220,533	4,567,463	5,319,338	5,753,987	5,319,898	4,915,371
Workers Compensation	0	0	0	0	0	0	0	0	0	0
Other Third Party	0	0	0	0	0	0	0	0	0	0
Self Pay	5,180,934	4,453,213	4,810,875	4,479,971	4,291,443	3,880,200	4,540,441	4,745,561	4,800,446	5,242,889
Subtotal	16,417,969	15,546,973	14,598,440	14,187,980	14,259,249	15,608,943	17,396,328	18,195,780	18,117,277	17,327,010
Less Credit Balances	(1,129,833)	(1,218,990)	(1,117,877)	(1,140,556)	(1,140,556)	(1,162,662)	(1,091,772)	(1,082,952)	(1,120,220)	(1,189,954)
Total AR including credit balances	15,288,136	14,327,983	13,480,563	13,047,424	13,118,693	14,446,281	16,304,556	17,112,828	16,997,057	16,137,056
AR by Age from Discharge										
0-30 Days	5,227,689	4,943,537	4,005,521	4,478,990	4,872,149	5,959,909	6,510,448	6,080,574	5,745,605	5,500,846
31-60 Days	2,279,818	2,205,243	2,032,036	1,447,679	1,788,029	2,023,938	2,928,918	3,323,416	2,773,790	2,588,029
61-90 Days	1,494,024	1,088,095	1,218,613	1,099,205	790,079	989,982	1,291,568	1,705,915	2,085,274	1,382,623
91-120 Days	999,117	1,119,044	803,066	937,770	781,620	586,430	752,100	1,107,088	1,330,931	1,378,414
121-180 Days	2,096,361	1,657,287	1,629,093	1,488,971	1,405,863	1,321,429	1,130,430	1,150,231	1,476,267	1,722,925
181-365 Days	4,320,959	4,533,767	4,910,110	4,735,367	4,621,509	4,727,255	4,782,864	4,828,556	4,705,410	4,754,173
Over 365 Days	0	0	0	0	0	0	0	0	0	0
Total	16,417,969	15,546,973	14,598,440	14,187,980	14,259,249	15,608,943	17,396,328	18,195,780	18,117,277	17,327,010
% Age from Discharge										
0-30 Days	31.8%	31.8%	27.4%	31.6%	34.2%	38.2%	37.4%	33.4%	31.7%	31.7%
31-60 Days	13.9%	14.2%	13.9%	10.2%	12.5%	13.0%	16.8%	18.3%	15.3%	14.9%
61-90 Days	9.1%	7.0%	8.3%	7.7%	5.5%	6.3%	7.4%	9.4%	11.5%	8.0%
91-120 Days	6.1%	7.2%	5.5%	6.6%	5.5%	3.8%	4.3%	6.1%	7.3%	8.0%
121-180 Days	12.8%	10.7%	11.2%	10.5%	9.9%	8.5%	6.5%	6.3%	8.1%	9.9%
181-365 Days	26.3%	29.2%	33.6%	33.4%	32.4%	30.3%	27.5%	26.5%	26.0%	27.4%
Over 365 Days	0.0%	0.0%	0.0%	0.0%	0.0%	0.0%	0.0%	0.0%	0.0%	0.0%
Total	100.0%	100.0%	100.0%	100.0%	100.0%	100.0%	100.0%	100.0%	100.0%	100.0%
Dollars Over 120 Days	6,417,320	6,191,054	6,539,203	6,224,338	6,027,372	6,048,684	5,913,294	5,978,787	6,181,677	6,477,098
Per Cent over 120 Days	39.1%	39.8%	44.8%	43.9%	42.3%	38.8%	34.0%	32.9%	34.1%	37.4%
	107,500	107,165	108,652	172,082	168,264	187,320	204,486	224,224	218,210	210,462

<div>Units of Service</div> <div>For the period ending Apr 2025</div>													
31		304											
Current Month						Bear Valley Community Hospital				Year-To-Date			
Apr-25 Actual	Budget	Apr-24 Actual	Actual -Budget Variance	Budget Var %	Act.-Act. Var %			Apr-25 Actual	Budget	Apr-24 Actual	Actual -Budget Variance	Budget Var %	Act.-Act. Var %
118	89	137	29	32.6%	-13.9%		Med Surg Patient Days	1181	1,370	916	(189)	-13.8%	28.9%
50	75	22	(25)	-33.3%	127.3%		Swing Patient Days	432	760	607	(328)	-43.2%	-28.8%
611	577	579	34	5.9%	5.5%		SNF Patient Days	5,660	5,923	5,959	(263)	-4.4%	-5.0%
779	741	738	38	5.1%	5.6%		Total Patient Days	7,273	8,053	7,482	(780)	-9.7%	-2.8%
29	29	32	0	1.4%	-9.4%		Acute Admissions	313	290	267	23	8.0%	17.2%
27	28	31	(1)	-3.4%	-12.9%		Acute Discharges	311	283	261	28	9.8%	19.2%
4.4	3.2	4.4	1	37.2%	-1.1%		Acute Average Length of Stay	3.8	4.8	3.5	(1)	-21.5%	8.2%
1.6	2.4	0.7	(0.81)	-33.3%	127.3%		Swing Average Daily Census	1.4	2.5	2.0	(1.1)	-43.2%	-28.8%
3.8	2.9	4.4	0.94	32.6%	-13.9%		Acute Average Daily Census	3.9	4.5	3.0	(0.6)	-13.8%	28.9%
19.7	18.6	18.7	1.1	5.9%	5.5%		SNFAvg Daily Census	18.6	19.5	19.6	(0.9)	-4.4%	-5.0%
25.1	23.9	23.8	1.2	5.1%	5.6%		Total Avg. Daily Census	23.9	26.5	24.6	(2.6)	-9.7%	-2.8%
55.8%	53.1%	52.9%	3%	5.1%	5.6%		% Occupancy	53.2%	58.9%	54.7%	-6%	-9.7%	-2.8%
29	18	32	11	62.7%	-9.4%		Emergency Room Admitted	295	225	239	70	31.1%	23.4%
842	820	876	22	2.7%	-3.9%		Emergency Room Discharged	9,733	10,350	10,255	(617)	-6.0%	-5.1%
871	838	908	33	4.0%	-4.1%		Emergency Room Total	10,028	10,575	10,494	(547)	-5.2%	-4.4%
28	27	29	1	4.0%	-4.1%		ER visits per calendar day	33	35	35	(2)	-5.2%	-4.4%
100.0%	62.3%	100.0%	4%	5.7%	0.0%		% Admits from ER	94.2%	77.6%	89.5%	33%	42.6%	5.3%
1	4	8	(3)	-75.0%	-87.5%		Surgical Procedures I/P	30	42	38	(12)	-28.6%	-21.1%
4	18	18	(14)	-77.6%	-77.8%		Surgical Procedures O/P	127	178	121	(51)	-28.7%	5.0%
5	22	26	(17)	-77.1%	-80.8%		TOTAL Procedures	157	220	159	(63)	-28.7%	-1.3%
227	1,192	2,304	(965)	-81.0%	-90.1%		Surgical/Anes Minutes Total	9,105	12,074	11,090	(2,969)	-24.6%	-17.9%

Units of Service
For the period ending Apr 2025

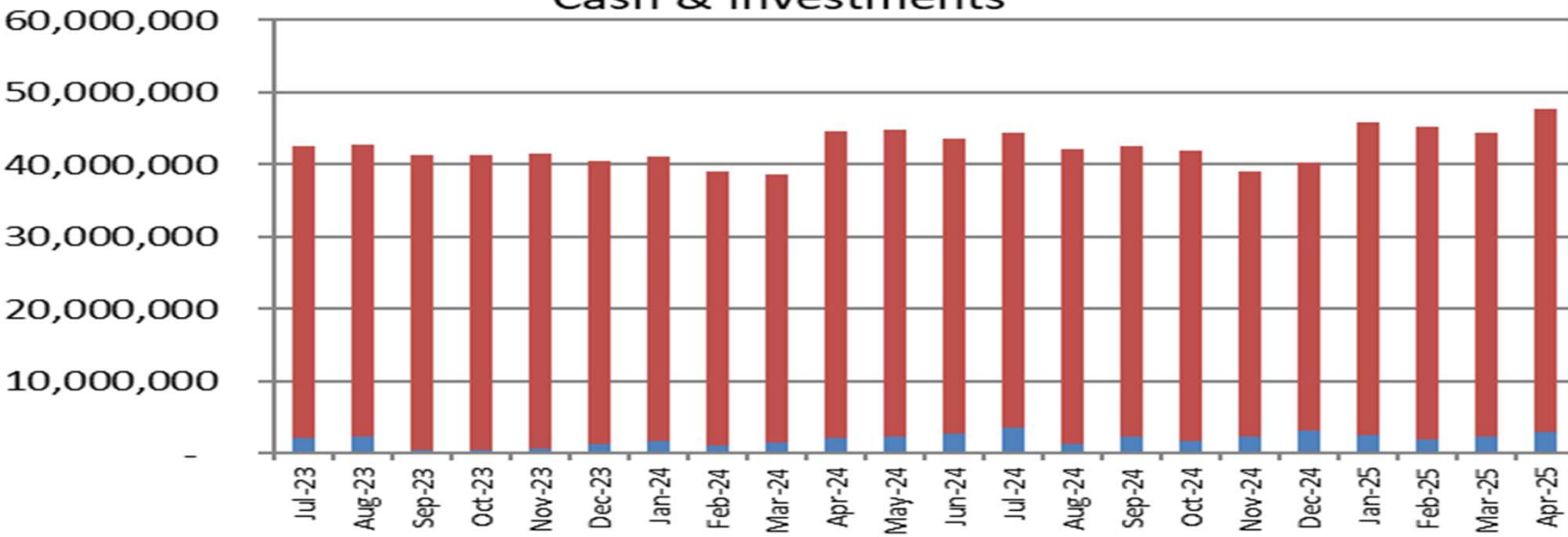
Current Month

Bear Valley Community Hospital

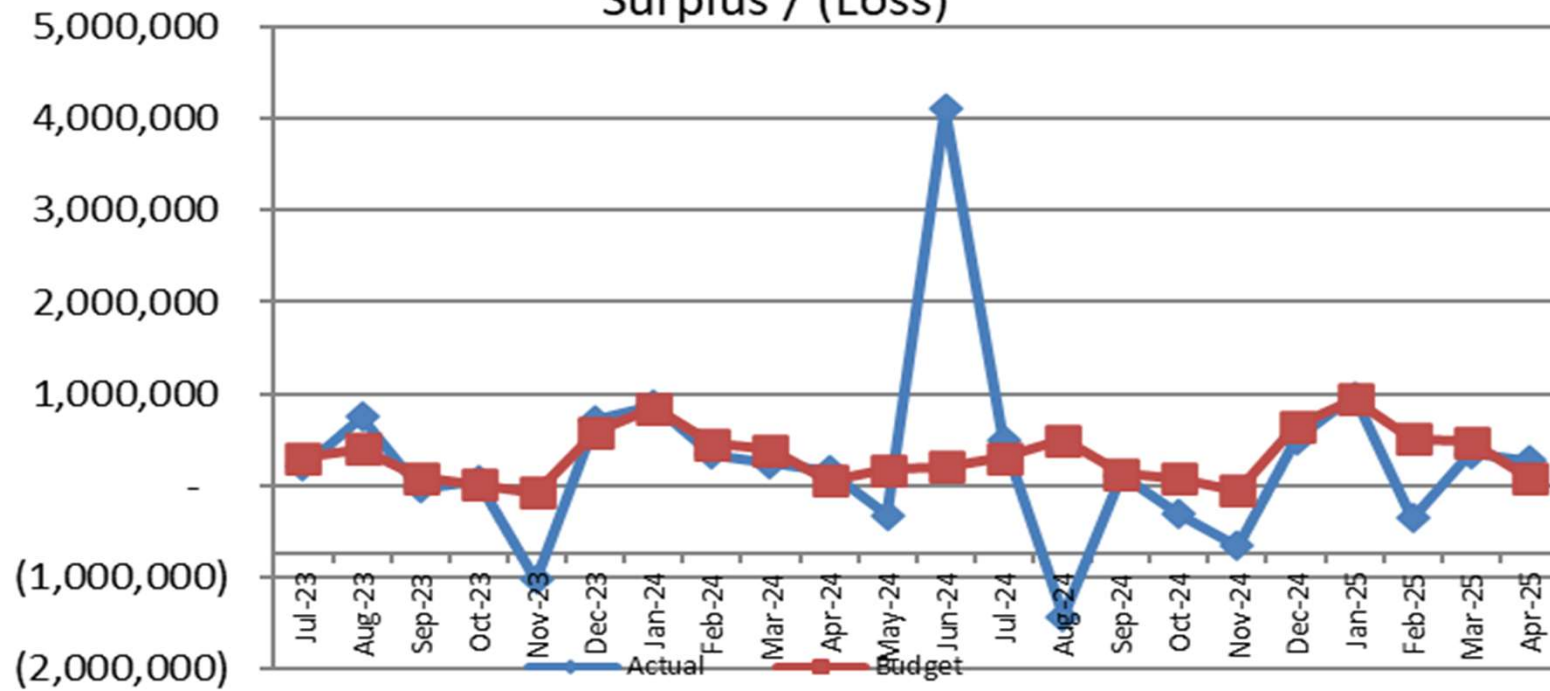
Year-To-Date

Apr-25		Apr-24	Actual -Budget		Act.-Act.	Apr-25		Apr-24	Actual -Budget		Act.-Act.		
Actual	Budget	Actual	Variance	Var %	Var %		Actual	Budget	Actual	Variance	Var %	Var %	
7,763	6,860	6,983	903	13.2%	11.2%		Lab Procedures	68,492	65,645	64,927	2,847	4.3%	5.5%
776	789	849	(13)	-1.6%	-8.6%		X-Ray Procedures	8,330	8,889	8,851	(559)	-6.3%	-5.9%
493	393	435	100	25.4%	13.3%		C.T. Scan Procedures	4,829	4,641	4,465	188	4.1%	8.2%
201	166	161	35	21.1%	24.8%		Ultrasound Procedures	1,665	1,601	1,615	64	4.0%	3.1%
65	55	58	10	17.2%	12.1%		Mammography Procedures	468	562	528	(94)	-16.8%	-11.4%
332	293	293	39	13.3%	13.3%		EKG Procedures	3,143	3,065	3,065	78	2.5%	2.5%
86	126	95	(40)	-31.7%	-9.5%		Respiratory Procedures	1,146	1,189	1,152	(43)	-3.6%	-0.5%
2,513	2,655	2,369	(142)	-5.3%	6.1%		Physical Therapy Procedures	24,018	24,253	24,366	(235)	-1.0%	-1.4%
2,329	2,000	1,643	329	16.5%	41.8%		Primary Care Clinic Visits	20,051	17,903	14,936	2,148	12.0%	34.2%
346	294	314	52	17.7%	10.2%		Specialty Clinic Visits	2,969	2,499	2,657	470	18.8%	11.7%
2,675	2,294	1,957	381	16.6%	36.7%		Clinic	23,020	20,402	17,593	2,618	12.8%	30.8%
86	74	63	12	16.6%	36.7%		Clinic visits per work day	76	67	58	9	12.8%	30.8%
13.8%	15.00%	12.80%	-1.20%	-8.00%	7.81%		% Medicare Revenue	14.22%	15.00%	14.01%	-0.78%	-5.20%	1.50%
46.10%	37.00%	44.70%	9.10%	24.59%	3.13%		% Medi-Cal Revenue	42.16%	37.00%	39.21%	5.16%	13.95%	7.52%
37.20%	43.00%	39.60%	-5.80%	-13.49%	-6.06%		% Insurance Revenue	40.00%	43.00%	43.04%	-3.00%	-6.98%	-7.06%
2.90%	3.50%	2.90%	-0.60%	-17.14%	0.00%		% Self-Pay Revenue	3.62%	3.50%	4.03%	0.12%	3.43%	-10.17%
203.1	192.2	186.7	11.0	5.7%	8.8%		Productive FTE's	185.5	192.2	180.5	(6.6)	-3.4%	2.8%
228.7	213.5	212.5	15.2	7.1%	7.6%		Total FTE's	213.6	213.5	205.5	0.1	0.0%	3.9%

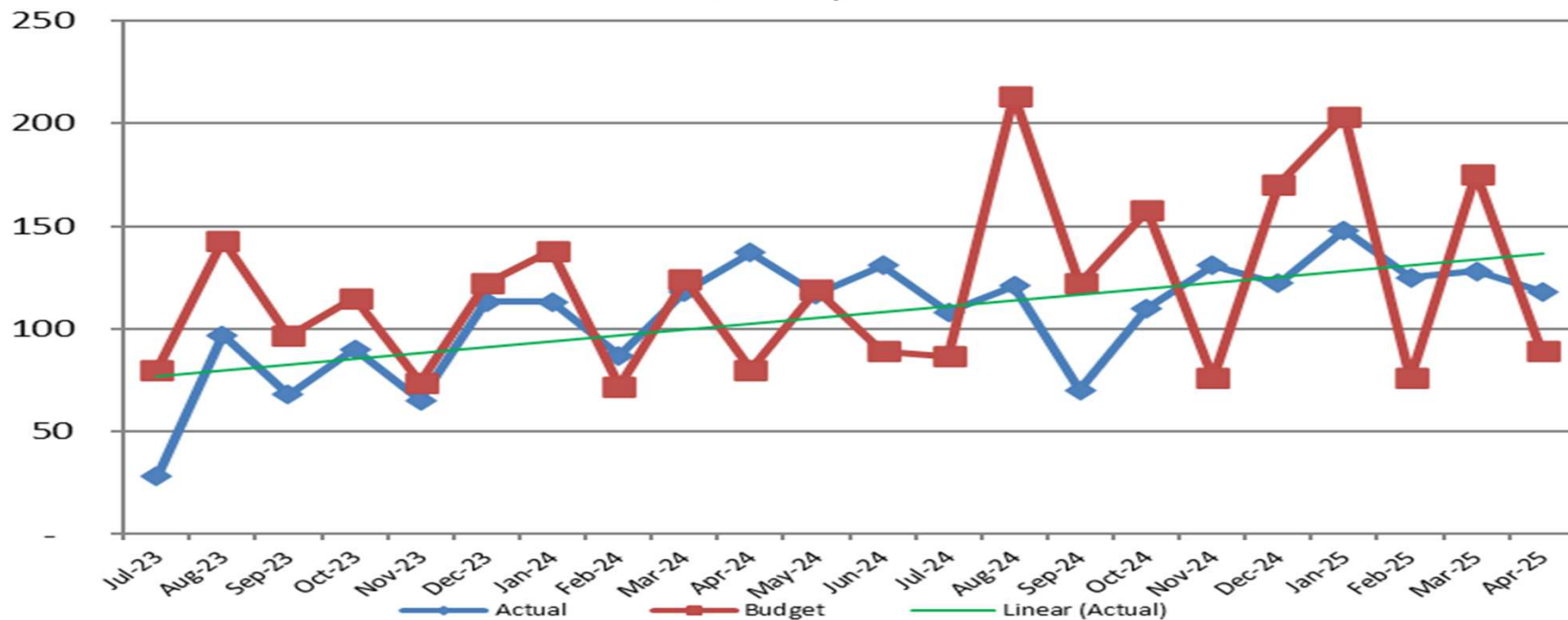
Cash & Investments



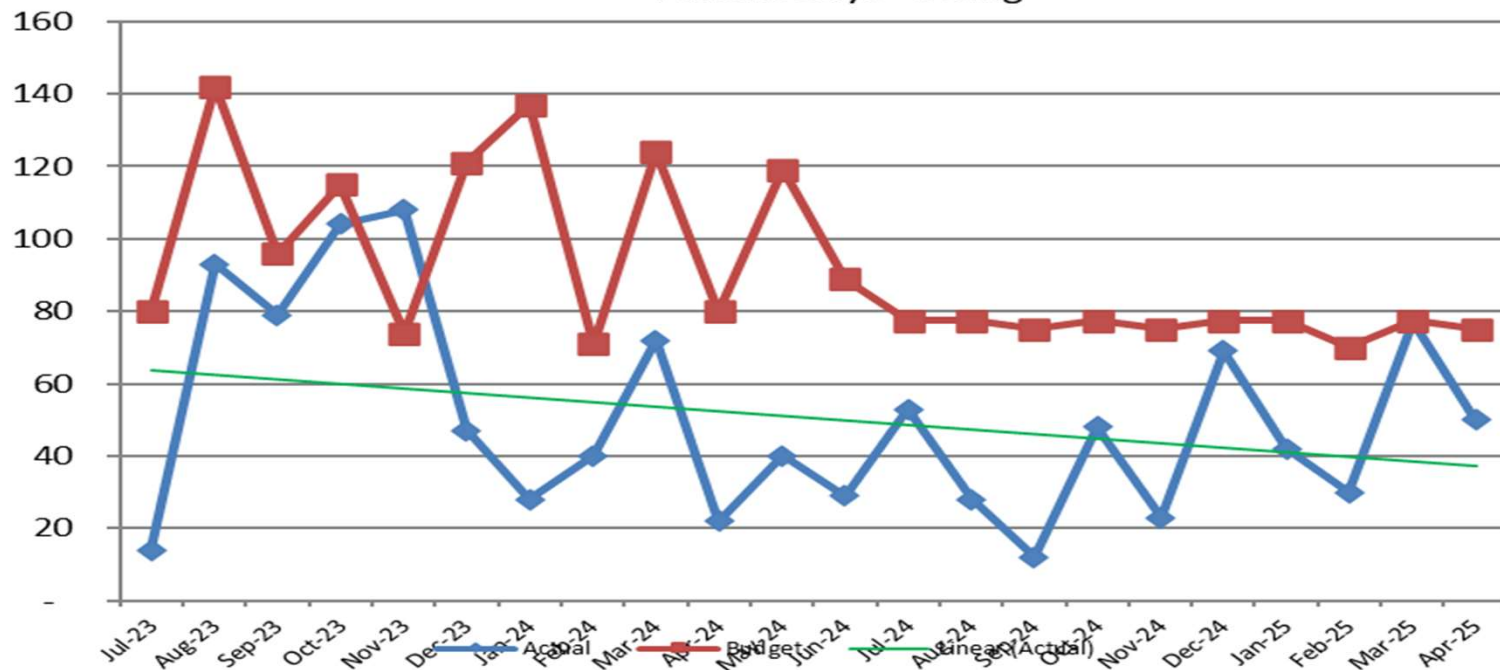
Surplus / (Loss)

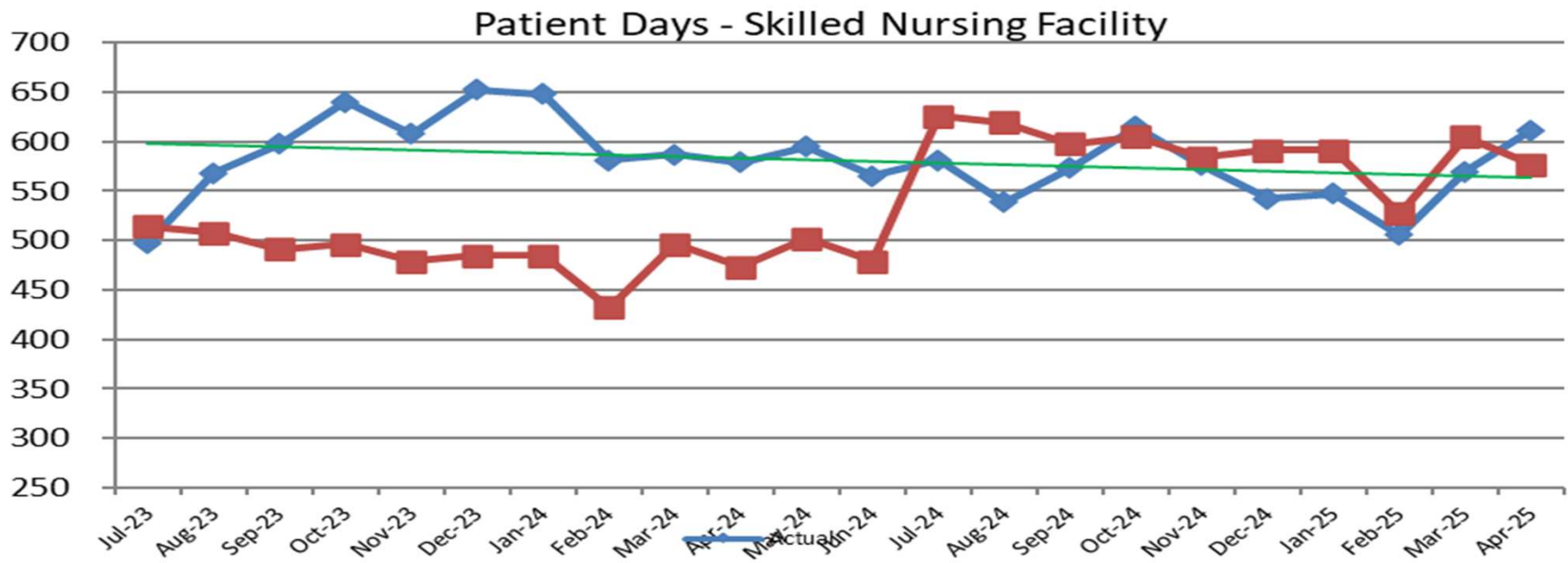


Patient Days - Acute

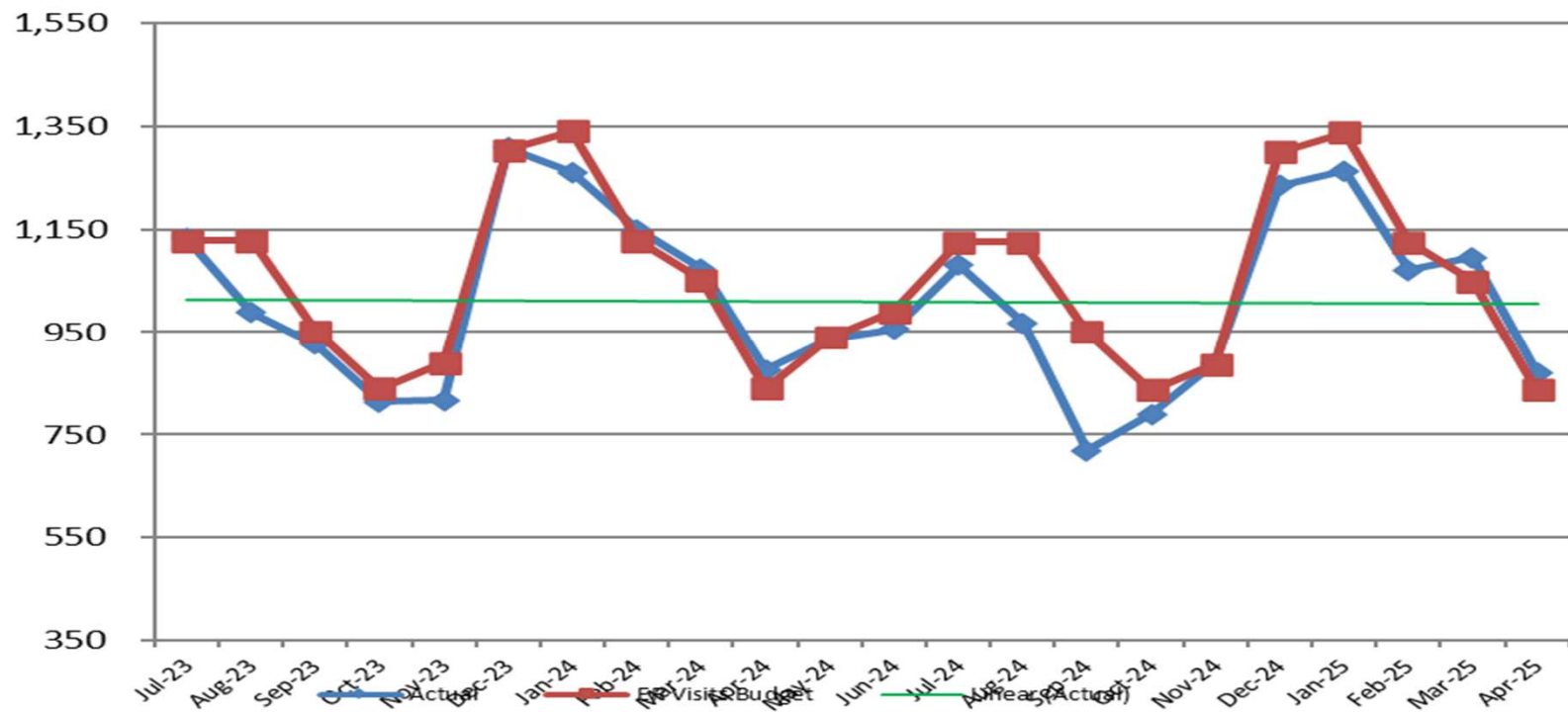


Patient Days - Swing

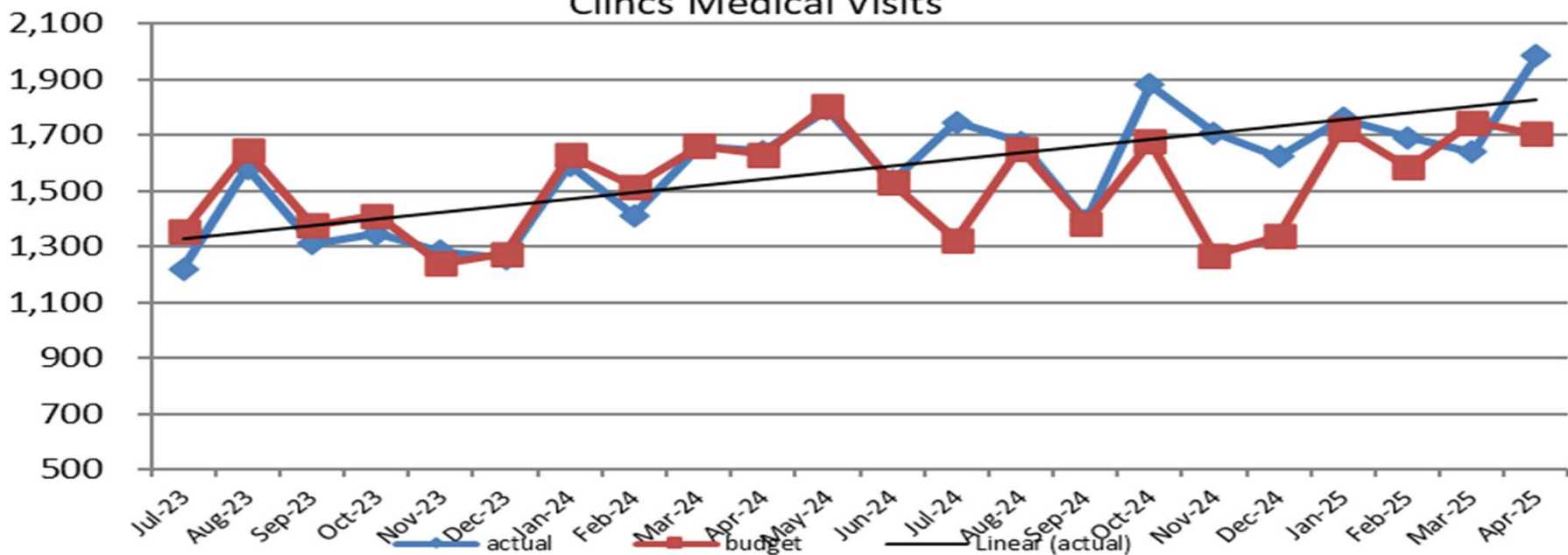




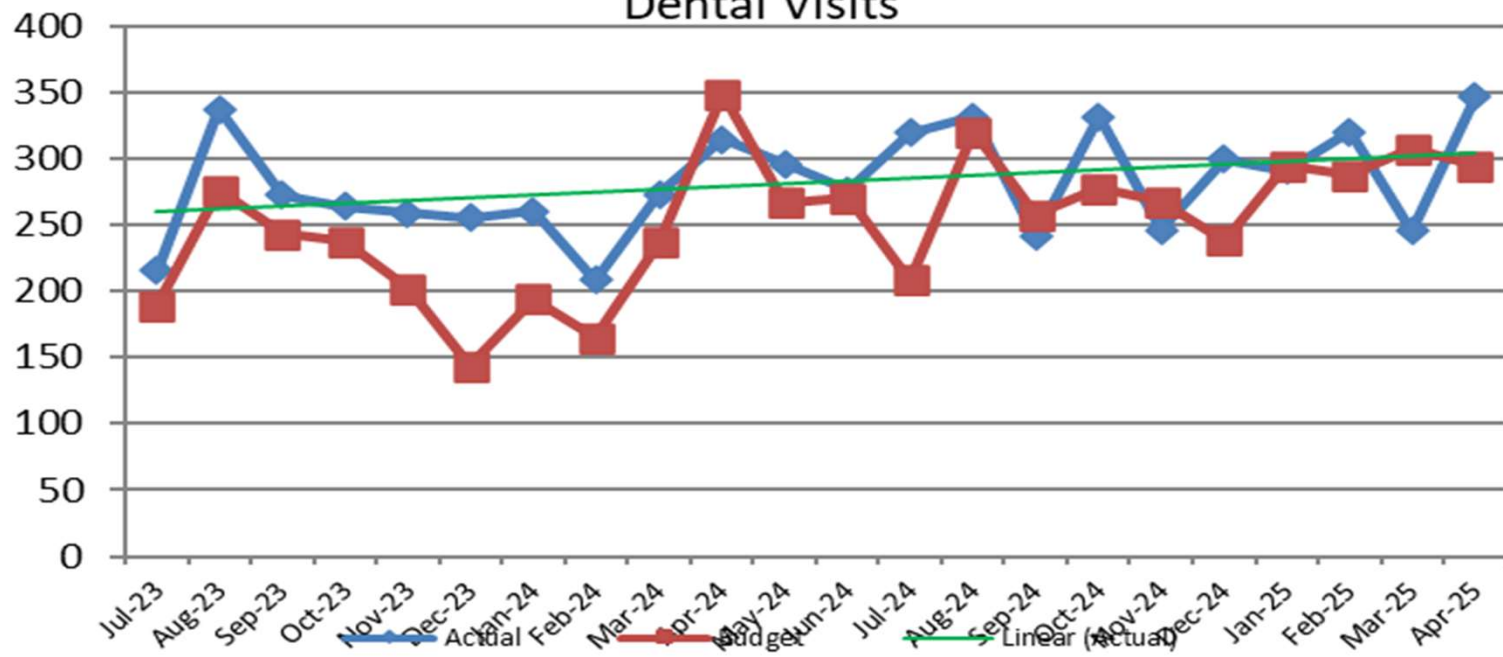
Emergency Room Visits



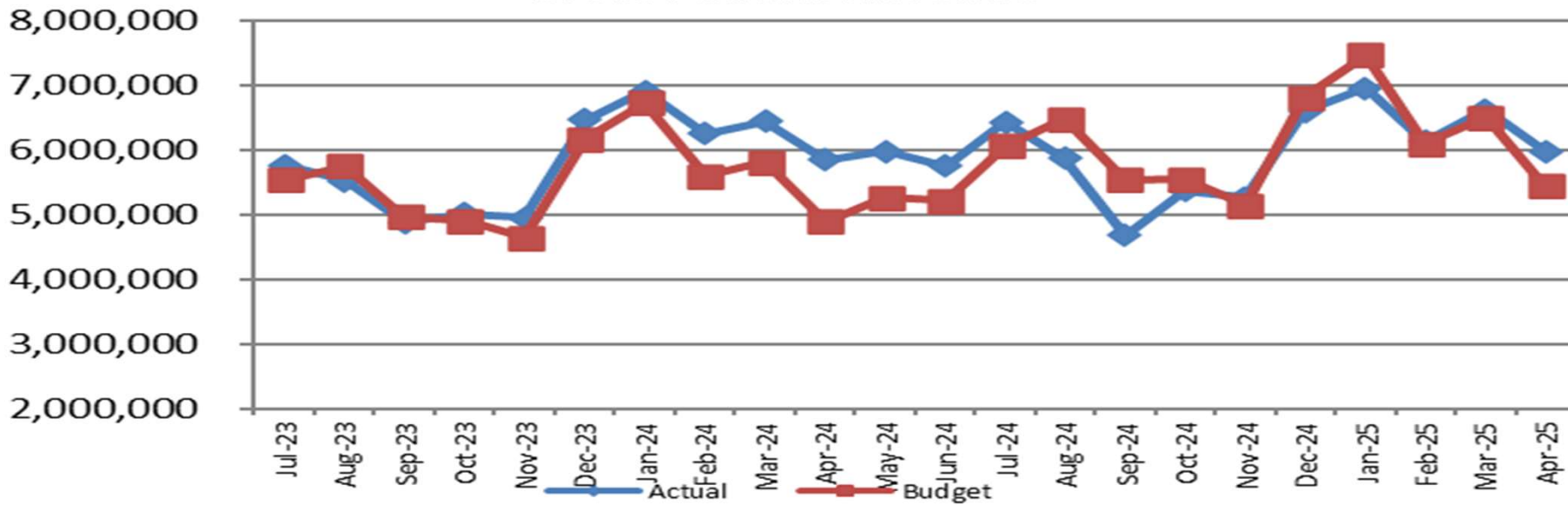
Clincs Medical Visits



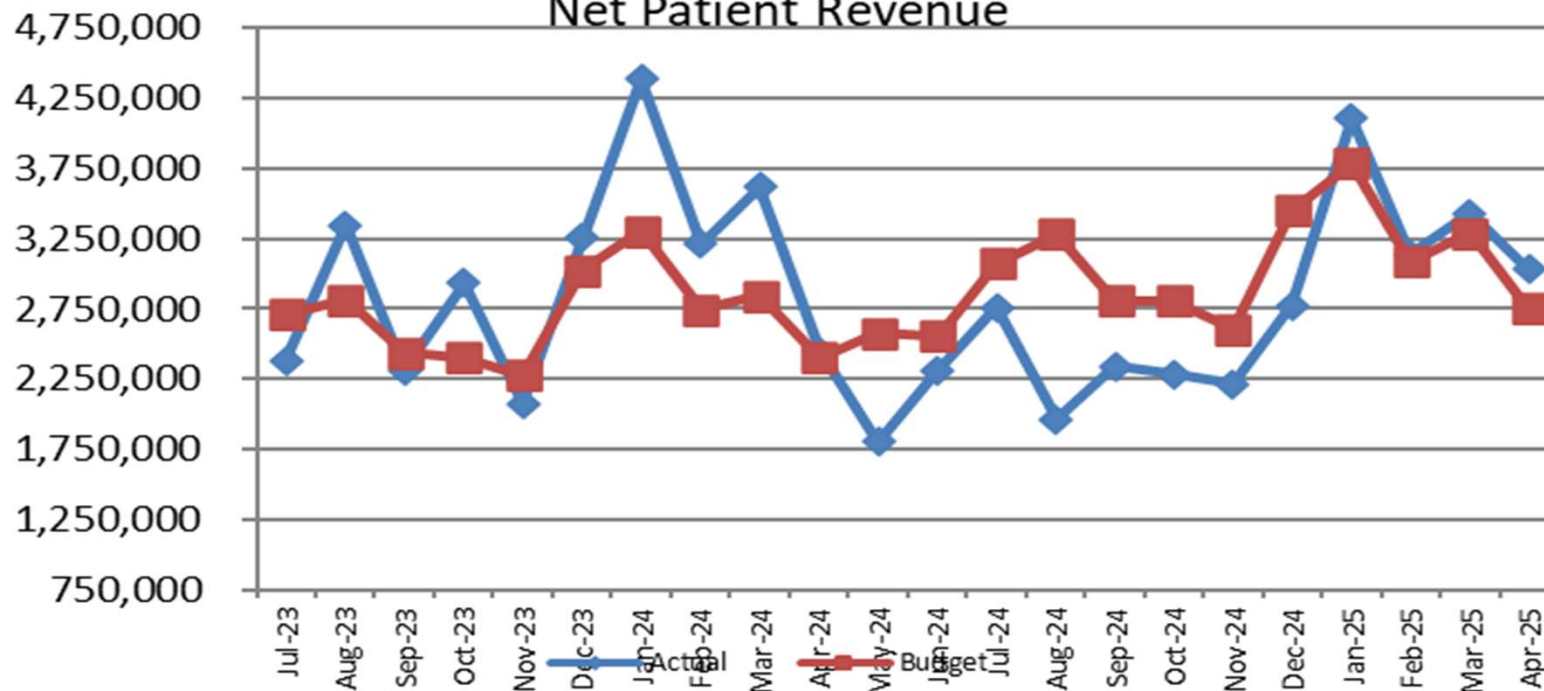
Dental Visits



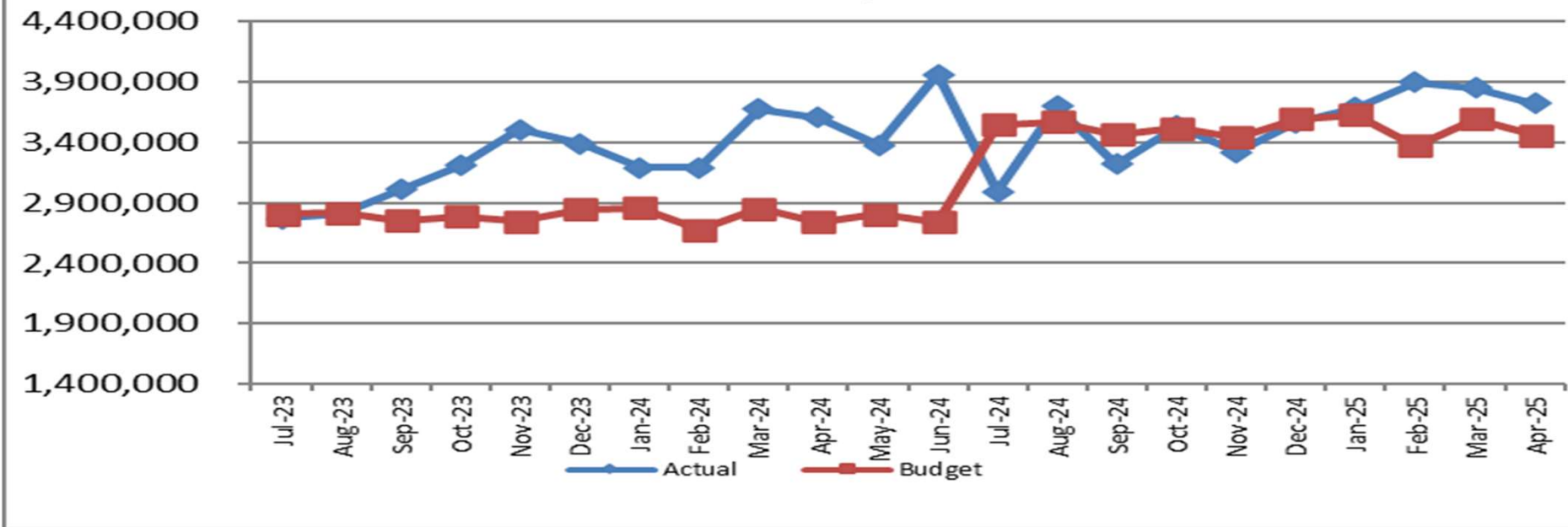
Gross Patient Revenue



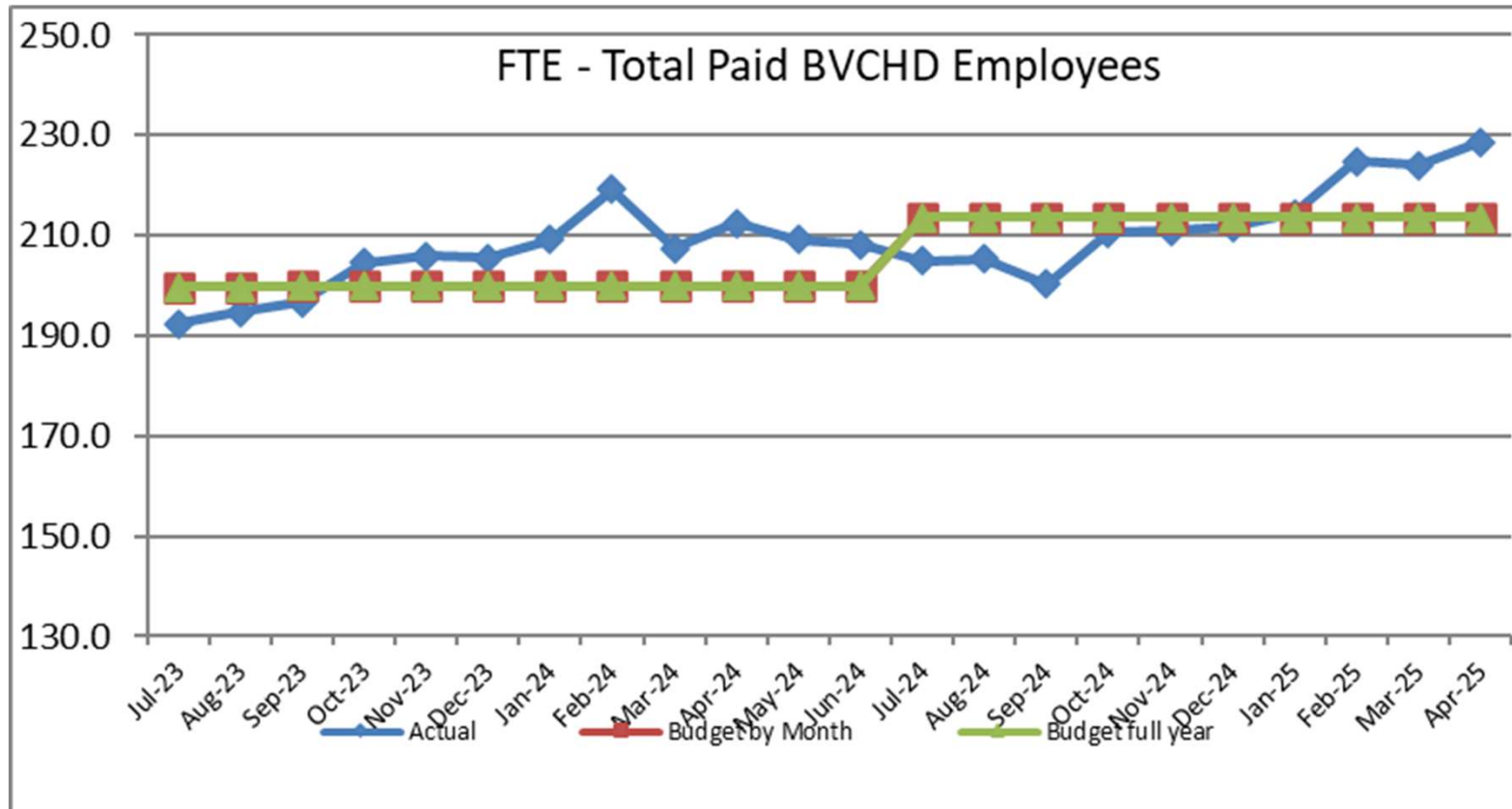
Net Patient Revenue



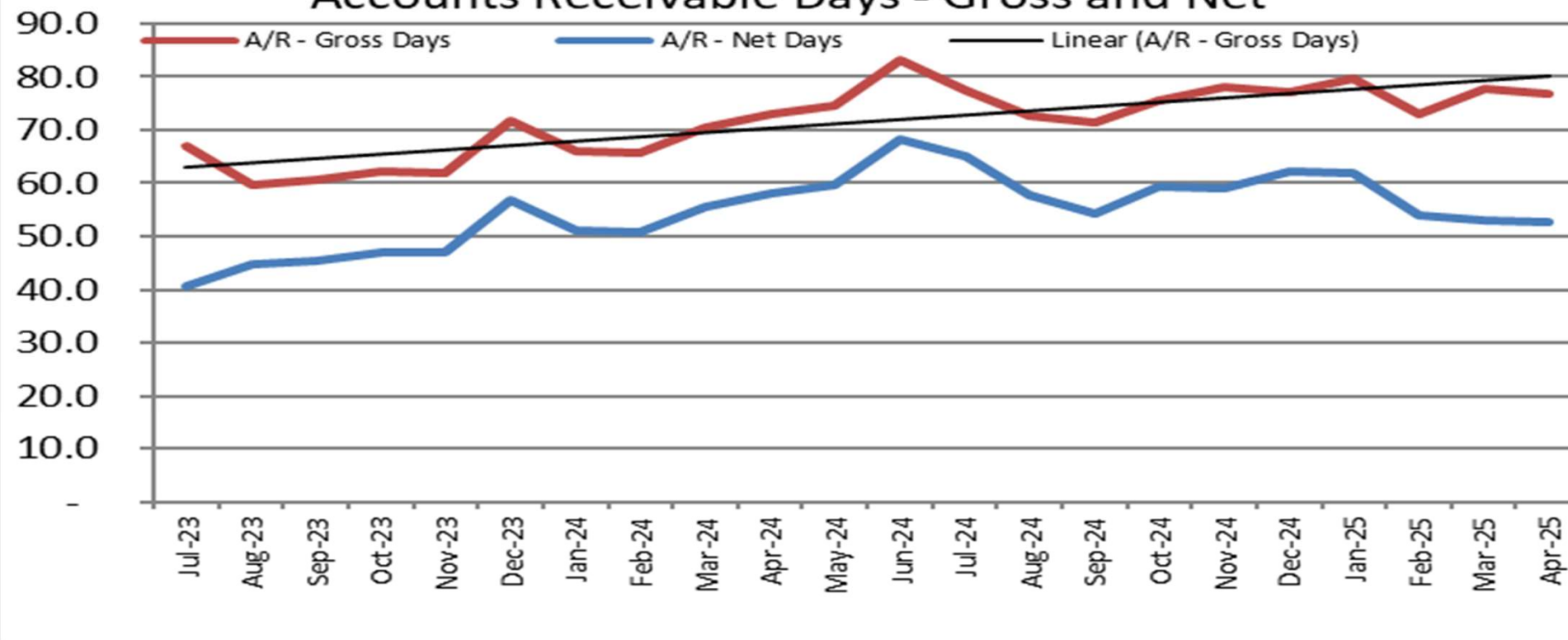
Total Expenses



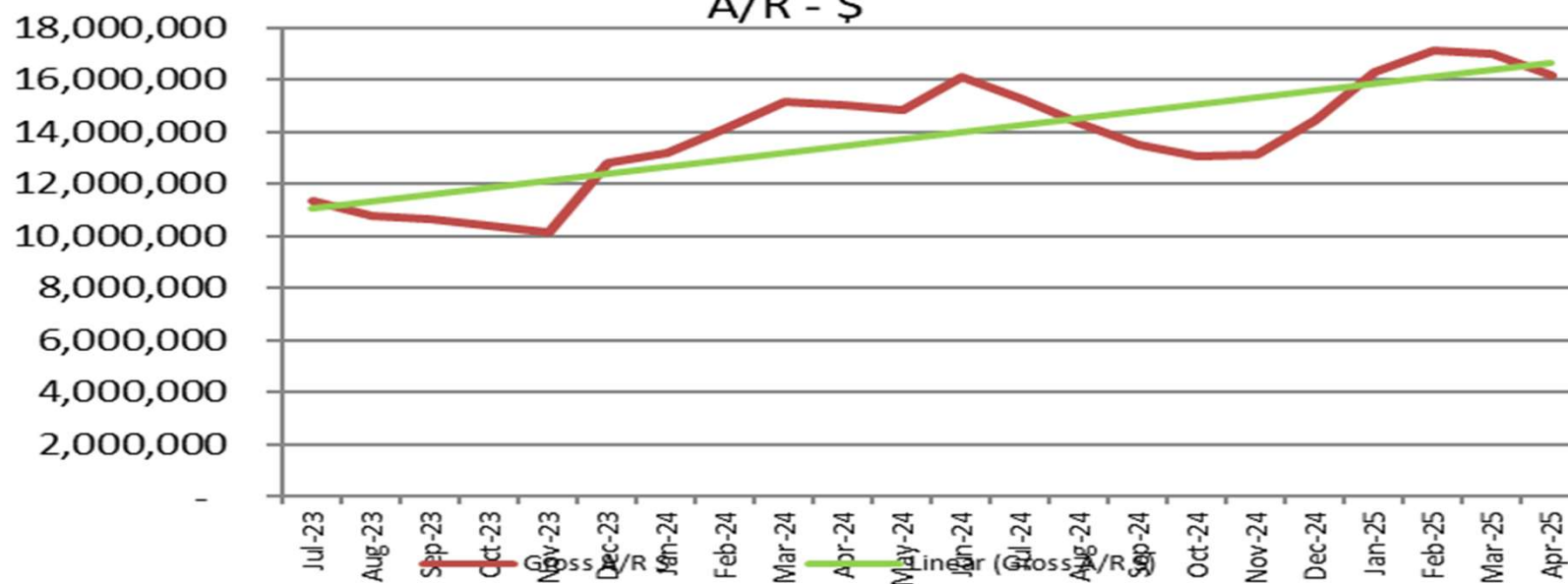
FTE - Total Paid BVCHD Employees



Accounts Receivable Days - Gross and Net



A/R - \$



8

RUN DATE:05/20/25
TIME:15:58

BEAR VALLEY COMMUNITY
CHECK REGISTER
04/01/25 THRU 04/30/25

PAGE 1
GLCKREG

BANK--CHECK-----

CODE	NUMBER	DATE	AMOUNT	PAYEE

FMB *	091695	04/29/25	100.00	CR HALPIN NICOLE M
FMB *	115661	04/21/25	1,050.00	CR ITXTEND LLC
FMB *	116109	04/24/25	248.63	CR MATTHEW BATHGATE
FMB	116468	04/03/25	747.78	MOLINA HEALTHCARE OF CA
FMB	116469	04/03/25	495.62	OVERPAYMENT RECOVERY
FMB	116470	04/03/25	72.57	ABBOTT LABORATORIES
FMB	116471	04/03/25	1,500.00	AHMED EL-BERSHAWI
FMB	116472	04/03/25	50.00	ALL PROTECTION ALARM
FMB	116473	04/03/25	1,621.90	AMAZON CAPITAL SERVICES, INC
FMB	116474	04/03/25	191.45	AMERISOURCEBERGEN
FMB	116475	04/03/25	1,250.00	ANDY WERKING
FMB	116476	04/03/25	921.94	ARIANA FEUVRIER
FMB	116477	04/03/25	508.61	AT&T MOBILITY LLC
FMB	116478	04/03/25	350.19	AWARDS NETWORK
FMB	116479	04/03/25	389.85	BB HOTEL LLC
FMB	116480	04/03/25	416.41	BEAR VALLEY ELECTRIC
FMB	116481	04/03/25	150.00	BELLA NATALIE CERVATES
FMB	116482	04/03/25	203.35	BIG BEAR CITY CSD
FMB	116483	04/03/25	16,130.00	BIG BEAR FAMILY MEDICINE, INC
FMB	116484	04/03/25	1,167.98	BRACCO DIAGNOSTICS INC
FMB	116485	04/03/25	253.65	BUTCHERS BLOCK
FMB	116486	04/03/25	4,633.25	CALIF TOOL & WELDING SUPPLY
FMB	116487	04/03/25	899.00	CALIFORNIA CHAMBER OF COMMERCE
FMB	116488	04/03/25	2,470.00	CALVIN PRAMANN, DC
FMB	116489	04/03/25	4,200.00	CARY STEWART MD INC
FMB	116490	04/03/25	1,125.00	CAW DBA VTECH
FMB	116491	04/03/25	1,145.00	CENTER FOR HEALTHCARE EDUCATIO
FMB	116492	04/03/25	810.34	CHARTER COMMUNICATIONS HOLDING
FMB	116493	04/03/25	1,750.00	CHEROKEE CHEMICAL CO., INC
FMB	116494	04/03/25	2,000.00	CLINICIANS TELEMED MED GROUP
FMB	116495	04/03/25	2,500.00	CYRANO SYSTEMS, LLC
FMB	116496	04/03/25	38,750.00	D CRITEL NURSING ANESTH INC
FMB	116497	04/03/25	18,400.00	DAVID HORNER PC
FMB	116498	04/03/25	1,998.00	DESTINATION BIG BEAR LLC
FMB	116499	04/03/25	336.31	DIY HOME CENTER
FMB	116500	04/03/25	15,000.00	ELEVATE EMERGENCY MEDICINE
FMB	116501	04/03/25	45.00	EVAN RAYNER
FMB	116502	04/03/25	1,068.00	EXTRA SPACE MANAGEMENT INC
FMB	116503	04/03/25	2,301.96	FRONTIER COMMUNICATIONS
FMB	116504	04/03/25	11,964.85	GATEWAY ACCEPTANCE CO.
FMB	116505	04/03/25	135.14	GLOBALSTAR USA
FMB	116506	04/03/25	75.00	GNXCOR USA INC
FMB	116507	04/03/25	617.42	GRAINGER PARTS
FMB	116508	04/03/25	11,570.00	HABEN PROF. CHIROPRACTIC CORP.
FMB	116509	04/03/25	9,625.00	HEARTWORKS, INC
FMB	116510	04/03/25	2,000.00	HIGH DESERT PATHOLOGY MDCL GRP
FMB	116511	04/03/25	400.00	HOLLY JOHNSON
FMB	116512	04/03/25	1,796.55	INDEED, INC.
FMB	116513	04/03/25	20.00	INNOVATIVE CREDIT SOLUTIONS
FMB	116514	04/03/25	1,303.05	IPITOMY COMMUNICATIONS LLC

RUN DATE:05/20/25
TIME:15:58

BEAR VALLEY COMMUNITY
CHECK REGISTER
04/01/25 THRU 04/30/25

PAGE 2
GLCKREG

BANK--CHECK-----

CODE	NUMBER	DATE	AMOUNT	PAYEE
FMB	116515	04/03/25	596.44	J AND J PRODUCE CO
FMB	116516	04/03/25	455.00	JAMES SKOIE
FMB	116517	04/03/25	45.00	JIM SCHLENKER
FMB	116518	04/03/25	1,247.49	JOHNSON CNTRLS FIRE PROT. LP
FMB	116519	04/03/25	331.01	KIMBALL MIDWEST
FMB	116520	04/03/25	1,689.93	KONICA MINOLTA
FMB	116521	04/03/25	930.00	LIFESTREAM
FMB	116522	04/03/25	2,313.30	MATHESON TRI GAS INC.
FMB	116523	04/03/25	82.91	MCKESSON MEDICAL SURGICAL
FMB	116524	04/03/25	3,240.00	MCNEIL, TROPP & BRAUN, LLP
FMB	116525	04/03/25	1,750.80	MEDLINE INDUSTRIES INC
FMB	116526	04/03/25	1,500.00	MICHAEL S CHIN, MD, INC
FMB	116527	04/03/25	102.50	OJ'S DONUT HOUSE
FMB	116528	04/03/25	1,977.25	OLYMPUS AMERICA INC.
FMB	116529	04/03/25	2,490.65	ORTHO-CLINICAL DIAGNOSTICS INC
FMB	116530	04/03/25	2,000.00	PACIFIC HEALTH CARE IMAGING
FMB	116531	04/03/25	15,174.24	PAUL F STEMMER MD
FMB	116532	04/03/25	271.34	PETTY CASH - VICTORIA SHIVELY
FMB	116533	04/03/25	1,070.36	READY REFRESH BY NESTLE
FMB	116534	04/03/25	1,000.00	ROBERT BLAKE RENNIE
FMB	116535	04/03/25	600.00	ROSHAN T MELVANI MD INC
FMB	116536	04/03/25	619.21	SANOFI PASTEUR INC
FMB	116537	04/03/25	166.18	SIEMENS HEALTHCARE DIAGNOSTICS
FMB	116538	04/03/25	2,740.25	SOFTSCRIPT INC
FMB	116539	04/03/25	21,833.00	SOL RADIOLOGY INC
FMB	116540	04/03/25	3,514.66	STAPLES ADVANTAGE
FMB	116541	04/03/25	574.09	STERICYCLE INC
FMB	116542	04/03/25	16,750.00	STEVEN MICHAEL KNAPIK
FMB	116543	04/03/25	2,867.59	SYSKO RIVERSIDE INC
FMB	116544	04/03/25	672.31	TEAMSTERS LOCAL 1932
FMB	116545	04/03/25	2,286.32	TRI RAD INC
FMB	116546	04/03/25	506.97	UNITED NURSES ASSOCIATION
FMB	116547	04/03/25	38.88	UNITED PARCEL SERVICE
FMB	116548	04/03/25	2,742.16	US FOOD SERVICE INC
FMB	116549	04/03/25	7,040.00	US IMPLANT SOLUTIONS, LLC
FMB	116550	04/03/25	12,800.00	V. MADHU ANVEKAR MD, INC.
FMB	116551	04/03/25	818.90	VERATHON INC
FMB	116552	04/03/25	557.30	VISA
FMB	116553	04/03/25	2,000.00	WILLIAM A. GIAMARINO
FMB	116554	04/04/25	300.00	DR ERIC A. SAIDI
FMB	116555	04/10/25	3,348.98	AFLAC
FMB	116556	04/10/25	9,416.13	AGILITI HEALTH, INC.
FMB	116557	04/10/25	41.00	ALCON VISION, LLC
FMB	116558	04/10/25	2,462.54	AMAZON CAPITAL SERVICES, INC
FMB	116559	04/10/25	295.99	AUTOZONE STORES, LLC
FMB	116560	04/10/25	27,750.64	BEAR VALLEY ELECTRIC
FMB	116561	04/10/25	472.60	BENINK & SLAVENS, LLP
FMB	116562	04/10/25	36,949.25	BETA HEALTHCARE GROUP
FMB	116563	04/10/25	31,462.68	BETA HEALTHCARE GROUP
FMB	116564	04/10/25	5,841.61	BIG BEAR DISPOSAL
FMB	116565	04/10/25	1,963.00	BIG BEAR GRIZZLY

RUN DATE:05/20/25
TIME:15:58

BEAR VALLEY COMMUNITY
CHECK REGISTER
04/01/25 THRU 04/30/25

PAGE 3
GLCKREG

BANK--CHECK-----

CODE	NUMBER	DATE	AMOUNT	PAYEE
FMB	116566	04/10/25	1,067.69	CALIF TOOL & WELDING SUPPLY
FMB	116567	04/10/25	2,373.30	CARDINAL HEALTH
FMB	116568	04/10/25	702.53	CDW GOVERNMENT INC
FMB	116569	04/10/25	49,000.00	CENTER FOR ORAL HEALTH
FMB	116570	04/10/25	1,259.27	CHARTER COMMUNICATIONS HOLDING
FMB	116571	04/10/25	237.06	CINTAS COPORATION NO.2
FMB	116572	04/10/25	35,379.04	CLIFFORD MOSS
FMB	116573	04/10/25	4,266.00	CPSI/EVIDENT
FMB	116574	04/10/25	825.00	DR ERIC A. SAIDI
FMB	116575	04/10/25	1,076.70	DWP CITY OF BIG BEAR LAKE
FMB	116576	04/10/25	5,966.65	EMERALD TEXTILES
FMB	116577	04/10/25	2,775.61	FISHER HEALTHCARE
FMB	116578	04/10/25	11,456.72	GATEWAY ACCEPTANCE CO.
FMB	116579	04/10/25	17,037.50	GHA TECHNOLOGIES, INC
FMB	116580	04/10/25	744.44	GLOBO LANGUAGE SOLUTIONS LLC
FMB	116581	04/10/25	489.00	GOLDEN STATE STORAGE
FMB	116582	04/10/25	207.38	HEALTH CARE LOGISTICS
FMB	116583	04/10/25	312.36	HENRY SCHEIN INC
FMB	116584	04/10/25	9,506.75	HOSP ASSOC OF SO CAL
FMB	116585	04/10/25	500.00	HUMAN MEDICAL BILLING
FMB	116586	04/10/25	5,995.00	I2I POPULATION HEALTH
FMB	116587	04/10/25	678.00	INFLUENCE MARKETING SERVICES
FMB	116588	04/10/25	38,632.50	IRIS TELEHEALTH MEDICAL GROUP
FMB	116589	04/10/25	5,013.17	IRON MOUNTAIN INC
FMB	116590	04/10/25	1,050.00	ITXTEND LLC
FMB	116591	04/10/25	557.62	J AND J PRODUCE CO
FMB	116592	04/10/25	745.72	JOANNE MERRILL
FMB	116593	04/10/25	2,579.50	KBHR FM
FMB	116594	04/10/25	796.81	KCI USA INC.
FMB	116595	04/10/25	200.00	KENNY CLIFF
FMB	116596	04/10/25	155.12	KIMBALL MIDWEST
FMB	116597	04/10/25	1,406.79	KONICA MINOLTA BUSINESS SOL
FMB	116598	04/10/25	11,492.92	LABORATORY CORP OF AMERICA
FMB	116599	04/10/25	3,774.37	LEASING ASSOC. BARRINGTON, INC
FMB	116600	04/10/25	556.04	LEILANEE LOBRES
FMB	116601	04/10/25	2,770.00	LIFESTREAM
FMB	116602	04/10/25	77.58	LITTLE GREEN HOUSE FLORIST
FMB	116603	04/10/25	6,835.50	MARSH & MCLENNAN AGENCY LLC
FMB	116604	04/10/25	309.39	MEDI DOSE INC
FMB	116605	04/10/25	3,140.00	MEDICAL DISPATCH
FMB	116606	04/10/25	.00	VOIDED
FMB	116607	04/10/25	20,027.34	MEDLINE INDUSTRIES INC
FMB	116608	04/10/25	350.00	MINDCARE SOLUTIONS GROUP, INC
FMB	116609	04/10/25	545.42	MOONRIDGE FUEL
FMB	116610	04/10/25	37.75	MOUNTAIN WATER CO
FMB	116611	04/10/25	4,830.00	NAVE LAW OFFICE, PC
FMB	116612	04/10/25	2,773.22	OLYMPUS AMERICA INC.
FMB	116613	04/10/25	185.07	PERFORMANCE HEALTH SUPPLY INC.
FMB	116614	04/10/25	243.00	PTS COMMUNICATIONS
FMB	116615	04/10/25	88,653.36	QHR HEALTH, LLC
FMB	116616	04/10/25	1,500.00	QUADIENT FINANCE USA, INC

RUN DATE:05/20/25
TIME:15:58

BEAR VALLEY COMMUNITY
CHECK REGISTER
04/01/25 THRU 04/30/25

PAGE 4
GLCKREG

BANK--CHECK-----

CODE	NUMBER	DATE	AMOUNT	PAYEE
FMB	116617	04/10/25	4,366.00	RAM HEALTHCARE CONSULTING GROU
FMB	116618	04/10/25	93.04	READY REFRESH BY NESTLE
FMB	116619	04/10/25	15,415.00	RED PLANET PROMO
FMB	116620	04/10/25	200.00	REID JACKSON
FMB	116621	04/10/25	1,077.19	RELIAS LLC
FMB	116622	04/10/25	1,000.00	ROBERT BLAKE RENNIE
FMB	116623	04/10/25	14,745.00	RYAN A ZAMAN
FMB	116624	04/10/25	20,442.00	SAN BERNARDINO COUNTY
FMB	116625	04/10/25	595.57	SMILEMAKERS
FMB	116626	04/10/25	210.00	SPECTRA LABORATORIES, INC.
FMB	116627	04/10/25	4,150.41	SYSKO RIVERSIDE INC
FMB	116628	04/10/25	7,044.00	TELE CONNECT THERAPIES
FMB	116629	04/10/25	57.90	UNITED PARCEL SERVICE
FMB	116630	04/10/25	3,839.76	US FOOD SERVICE INC
FMB	116631	04/10/25	311.85	WAGeworks, INC.
FMB	116632	04/10/25	212.05	WAXIE SANITARY SUPPLY
FMB	116633	04/10/25	312.59	WESTFAX, INC
FMB	116634	04/10/25	39,500.00	WILLIAM CANNATA, MD
FMB	116635	04/10/25	8,000.00	WIPPLI CPA & CONSULTANTS
FMB	116636	04/10/25	1,746.23	ZOLL MEDICAL CORP.
FMB *	116637	04/10/25	4,312.54	ZONES INC
FMB	116641	04/17/25	297.29	AIRGAS USA,LLC
FMB	116642	04/17/25	4,313.02	ARTHREX, INC
FMB	116643	04/17/25	7,497.58	BEAR VALLEY ELECTRIC
FMB	116644	04/17/25	150.00	BELLA NATALIE CERVATES
FMB	116645	04/17/25	5,998.67	CHANGE HEALTHCARE LLC
FMB	116646	04/17/25	16,910.00	CPSI/EVIDENT
FMB	116647	04/17/25	256.00	DEPT OF JUSTICE
FMB	116648	04/17/25	6,500.00	EL DORADO BROADCASTERS LLC
FMB	116649	04/17/25	740.14	EXPERIAN HEALTH, INC
FMB	116650	04/17/25	.00	EXPRESS AUTO REGISTRATION SERV
FMB	116651	04/17/25	1,413.40	FRESENIUS KABI LLC
FMB	116652	04/17/25	35.26	GEIGER SUPPLY
FMB	116653	04/17/25	8,824.58	MEDLINE INDUSTRIES INC
FMB	116654	04/17/25	784.44	MINDRAY DS USA INC
FMB	116655	04/17/25	43.87	PERFORMANCE HEALTH SUPPLY INC.
FMB	116656	04/17/25	164,275.84	QHR HEALTH, LLC
FMB	116657	04/17/25	80.00	ROTARY CLUB OF BIG BEAR LAKE
FMB	116658	04/17/25	3,895.00	SIEMENS HEALTHCARE DIAGNOSTICS
FMB	116659	04/17/25	3,464.25	SOFTSCRIPT INC
FMB	116660	04/17/25	3,417.50	STALCUP LANDSCAPE INNOVATIONS
FMB	116661	04/17/25	1,200.00	STANLEY K MATHIS, DPM, INC.
FMB	116662	04/17/25	2,058.57	STAPLES ADVANTAGE
FMB	116663	04/17/25	138.75	STERICYCLE INC
FMB	116664	04/17/25	200.84	TAVOCA INC
FMB	116665	04/17/25	646.27	TEAMSTERS LOCAL 1932
FMB	116666	04/17/25	1,493.37	TELEFLEX LLC
FMB	116667	04/17/25	43.08	TRACY LEWIS
FMB	116668	04/17/25	458.69	UNITED NURSES ASSOCIATION
FMB	116669	04/17/25	12,299.12	ZONES INC
FMB	116670	04/24/25	39.56	OVERPAYMENT RECOVERY

RUN DATE:05/20/25
TIME:15:58

BEAR VALLEY COMMUNITY
CHECK REGISTER
04/01/25 THRU 04/30/25

PAGE 5
GLCKREG

BANK--CHECK-----				
CODE	NUMBER	DATE	AMOUNT	PAYEE
FMB *	116671	04/24/25	2,304.72	REGIONAL BUSINESS MM/IS
FMB	116703	04/24/25	2,150.00	ACIST MEDICAL SYSTEMS, INC
FMB	116704	04/24/25	975.26	AGILITI HEALTH, INC.
FMB	116705	04/24/25	194.12	ALBERTSONS SAFEWAY
FMB	116706	04/24/25	495.00	ALCOR SCIENTIFIC LLC
FMB	116707	04/24/25	3,162.13	AMAZON CAPITAL SERVICES, INC
FMB	116708	04/24/25	1,467.02	AMERISOURCEBERGEN
FMB	116709	04/24/25	2,330.30	ANDY MEADORS BRANDING, INC
FMB	116710	04/24/25	133.93	ANGELA RODRIGUEZ
FMB	116711	04/24/25	275.65	APPRISS HEALTH
FMB	116712	04/24/25	440.70	BB HOTEL LLC
FMB	116713	04/24/25	1,163.53	BEAR VALLEY ELECTRIC
FMB	116714	04/24/25	506.03	BETA HEALTHCARE GROUP
FMB	116715	04/24/25	1,657.00	BREWD COFFEE SYSTEMS
FMB	116716	04/24/25	215,445.12	CALPERS1486578418
FMB	116717	04/24/25	7,391.50	CANON MEDICAL SYSTEMS USA, INC
FMB	116718	04/24/25	694.84	CARDINAL HEALTH
FMB	116719	04/24/25	8,460.78	CAREFUSION SOLUTIONS LLC
FMB	116720	04/24/25	219.02	CRESTPOINT MANAGEMENT LTD
FMB	116721	04/24/25	808.13	CUSTOMER PAYMENT SOLUTIONS
FMB	116722	04/24/25	11,990.19	DELTA DENTAL OF CA
FMB	116723	04/24/25	89.02	DWP CITY OF BIG BEAR LAKE
FMB	116724	04/24/25	2,923.68	EMERALD TEXTILES
FMB	116725	04/24/25	690.00	FIELDMAN, ROLAPP & ASSOCIATES
FMB	116726	04/24/25	74.84	FIRST-CITIZENS BANK & TRUST CO
FMB	116727	04/24/25	14,504.22	FISHER HEALTHCARE
FMB	116728	04/24/25	19,050.91	GATEWAY ACCEPTANCE CO.
FMB	116729	04/24/25	392.02	GRAINGER PARTS
FMB	116730	04/24/25	1,050.00	ITXTEND LLC
FMB	116731	04/24/25	575.08	J AND J PRODUCE CO
FMB	116732	04/24/25	515.38	JENNIFER RICHARDS
FMB	116733	04/24/25	68.71	JEWELS MALTBIE
FMB	116734	04/24/25	319.95	LEIGH OVERTON
FMB	116735	04/24/25	2,500.00	MANIFEST MEDEX
FMB	116736	04/24/25	303.86	MARY NORMAN
FMB	116737	04/24/25	5,490.00	MCNEIL, TROPP & BRAUN, LLP
FMB	116738	04/24/25	28,565.20	MEDELY, INC.
FMB	116739	04/24/25	15,589.12	MEDLINE INDUSTRIES INC
FMB	116740	04/24/25	383.61	MEMORIES UNLIMITED INC
FMB	116741	04/24/25	2,985.10	MFI MEDICAL
FMB	116742	04/24/25	2,305.19	NCS PEARSON, INC
FMB	116743	04/24/25	6,134.92	NRC HEALTH
FMB	116744	04/24/25	20.00	OJ'S DONUT HOUSE
FMB	116745	04/24/25	325.31	OLIVIA BOCKOFF
FMB	116746	04/24/25	1,041.28	RADWORKS LLC
FMB	116747	04/24/25	4,132.50	RAM HEALTHCARE CONSULTING GROU
FMB	116748	04/24/25	252.72	READY REFRESH BY NESTLE
FMB	116749	04/24/25	1,416.00	RONALD EWELL
FMB	116750	04/24/25	24,969.33	SOLVENTUM HEALTH INFORMATION
FMB	116751	04/24/25	13,427.57	SOUTHWEST GAS CORPORATION
FMB	116752	04/24/25	6,411.06	STERIS CORPORATION

RUN DATE:05/20/25
TIME:15:58

BEAR VALLEY COMMUNITY
CHECK REGISTER
04/01/25 THRU 04/30/25

PAGE 6
GLCKREG

BANK--CHECK-----

CODE	NUMBER	DATE	AMOUNT	PAYEE
FMB	116753	04/24/25	5,735.51	SYSKO RIVERSIDE INC
FMB	116754	04/24/25	48.45	TRACY LEWIS
FMB	116755	04/24/25	148.25	UNITED PARCEL SERVICE
FMB	116756	04/24/25	11,115.32	UNUM LIFE INS CO OF AMERICA
FMB	116757	04/24/25	6,923.60	US FOOD SERVICE INC
FMB	116758	04/24/25	34,373.75	WILLIAM CANNATA, MD
TOTALS:			1,604,978.84	