



**BOARD OF DIRECTORS  
FINANCE COMMITTEE MEETING AGENDA  
TUESDAY, JULY 01, 2025**

**1:00 PM – OPEN SESSION – MAIN CONFERENCE ROOM  
41870 GARSTIN DRIVE, BIG BEAR LAKE, CA 92315**

---

Copies of staff reports or other written documentation relating to each item of business referred to on this agenda are on file in the Chief Executive Officer's Office and are available for public inspection or purchase at 10 cents per page with advance written notice. In compliance with the Americans with Disabilities Act and Government Code Section 54954.2, if you need special assistance to participate in a District meeting or other services offered by the District, please contact Administration (909) 878-8214. Notification at least 48 hours prior to the meeting or time when services are needed will assist the District staff in assuring that reasonable arrangements can be made to provide accessibility to the meeting or service. **DOCUMENTS RELATED TO OPEN SESSION AGENDAS (SB 343)** Any public record, relating to an open session agenda item, that is distributed within 72 hours prior to the meeting is available for public inspection at the public counter located in the Administration Office, located at 41870 Garstin Drive, Big Bear Lake, CA 92315. For questions regarding any agenda item, contact Administration at (909) 878-8214.

---

**OPEN SESSION**

1. **CALL TO ORDER** **Peter Boss, 2<sup>nd</sup> Vice President**
2. **ROLL CALL** **Shelly Egerer, Executive Assistant**
3. **ADOPTION OF AGENDA\***
4. **PUBLIC FORUM FOR OPEN SESSION**  
Opportunity for members of the public to address the Committee on Open Session items.  
*(Government Code Section 54954.3, there will be a three (3) minute limit per speaker. Any report or data required at this time must be requested in writing, signed and turned into Administration. Please state your name and city of residence.)*
5. **DIRECTORS' COMMENTS**
6. **APPROVAL OF MINUTES\***  
A. June 03, 2025
7. **OLD BUSINESS\***
  - None
8. **NEW BUSINESS\***
  - A. Discussion and Update on BVCHD Parcel Tax Sources & Uses
  - B. Discussion and Update on Local Agency Special Tax and Bond Accountability Act (SB 165)
9. **PRESENTATION AND REVIEW OF FINANCIAL STATEMENTS\***  
A. May 2025
10. **ADJOURNMENT\*** **\* Denotes Actions Items**



**BOARD OF DIRECTORS  
FINANCE COMMITTEE ROLL CALL ATTENDANCE  
JULY 01, 2025**

- 
- ☒ **Peter Boss, MD**
  - ☒ **Steven Baker**

**BEAR VALLEY COMMUNITY HEALTHCARE DISTRICT  
BOARD OF DIRECTORS  
FINANCE COMMITTEE MEETING MINUTES  
41870 GARSTIN DR., BIG BEAR LAKE, CA 92315  
MAY 06, 2025**

**MEMBERS** Jack Briner, Treasurer Evan Rayner, CEO  
**PRESENT:** Steven Baker, President Shelly Egerer, Executive Assistant  
Jim Schlenker, CFO

**STAFF:** None

**OTHER:** None

**COMMUNITY  
MEMBERS:** None

**ABSENT:** Kerri Jex, CNO

---

**OPEN SESSION**

**1. CALL TO ORDER:**

Board Member Briner called the meeting to order at 1:00 p.m.

**2. ROLL CALL:**

Jack Briner and Steven Baker were present. Also present were Evan Rayner, CEO, Jim Schlenker, CFO and Shelly Egerer, Executive Assistant.

**3. ADOPTION OF AGENDA:**

**President Baker motioned to adopt the June 03, 2025 Finance Committee Meeting Agenda as presented. Second by Board Member Briner to adopt the June 03, 2025 Finance Committee Meeting Agenda as presented. Board Member Briner called for a vote. A vote in favor of the motion was unanimously approved.**

- President Baker - yes
- Board Member Briner - yes

**4. PUBLIC FORUM FOR OPEN SESSION:**

Board Member Briner opened the Hearing Section for Public Comment on Open Session items at 1:00 p.m. Hearing no request to address the Finance Committee, Board Member Briner closed the Hearing Section at 1:00 p.m.

**5. DIRECTOR'S COMMENTS:**

- None

**6. APPROVAL OF MINUTES:**

A. May 06, 2025

**President Baker motioned to approve the May 06, 2025 minutes as presented. Second by Board Member Briner to approve the May 06, 2025 and minutes as presented. Board Member Briner called for a vote. A vote in favor of the motion was unanimously approved.**

- President Baker - yes
- Board Member Briner- yes

**7. OLD BUSINESS:**

- None

**8. NEW BUSINESS\***

- None

**9. PRESENTATION AND REVIEW OF FINANCIAL STATEMENTS\***

**A. April 2025 Finances:**

- Mr. Schlenker reported the following information:
  - Cash on hand \$3083,076
  - Cash collections \$3,154,901; one of the best cash collections
  - Investments \$19,573,172
  - Loss for the month of \$619,445
  - Patient revenue was at budget
  - Total Surplus \$274,189
  - Revenue deductions were at 49% of total revenue
  - Loss in surgery
  - Net patient revenue was 10.1 more than budget
  - Total expenses 7.6% more than budget
  - Contractual allowance3s for the month were below target
  - Total operating revenue exceeded the current months target by \$260K
  - Total expenses exceeded by 2.4%
  - We continue to make progress on Registry; we are making progress
  - Received payments from Molina & BETA
  - 378 days cash on hand

**President Baker motioned to approve the April 2025 Finance Report as presented. Second by Board Member Briner to approve the April 2025 Finance Report as presented. Board Member Briner called for a vote. A vote in favor of the motion was unanimously approved.**

- President Baker - yes
- Board Member Briner- yes

**10. ADJOURNMENT\***

**President Baker motioned to adjourn the meeting at 1:46 p.m. Second by Board Member Briner to adjourn the meeting. Board Member Briner called for a vote. A vote in favor of the motion was unanimously approved.**

- President Baker - yes
- Board Member Briner- yes

**Bear Valley Community Healthcare District**  
**Parcel Tax - Qualified Expenditures Report for Operational Reimbursement**

<b>Capital Expenditure Item</b>	<b>\$ Amount</b>	
Anesthesia Machine	\$ 40,450	
Anesthesia Machine supplies, etc.	\$ 28,297	
Ophthalmic Exam Lane Equipment		
Exam Chair	\$ 3,500	
Exam Stand	\$ 3,500	
Slit Lamp	\$ 2,500	
Optical Manual Phoropter	\$ 2,000	
Digital Visual Acuity System	\$ 500	
Auto Refractor	\$ 3,700	
Lensometer	\$ 2,300	
Eye Stretcher Chair	\$ 8,342	
Argos Biometer Machine	\$ 46,063	
Digital Marker Microscope Kit	\$ 17,369	
Echo Machine	\$ 69,066	
Acute Bed Replacement	\$ 64,503	
Hana Surgical Table plus Accessories	\$ 100,635	
<b>Total Capital Expenditures</b>		<b>\$ 392,725</b>
 Registry Costs (Non-Employed RN staff)		
	Jul-24 \$ 99,973	
	Aug-24 \$ 119,575	
	Sep-24 \$ 93,966	
	Oct-24 \$ 107,449	
	Nov-24 \$ 97,509	
	Dec-24 \$ 126,527	
	Jan-25 \$ 137,842	
	Feb-25 \$ 85,073	
	Mar-25 \$ 80,668	
	Apr-25 \$ 85,836	
	May-25 \$ 52,163	
<b>Total Registry Costs YTD May 2025</b>		<b>\$ 1,086,581</b>
 Physician/Professional Fees		
	Jul-24 \$ 234,004	
	Aug-24 \$ 300,107	
	Sep-24 \$ 257,745	
	Oct-24 \$ 273,757	
	Nov-24 \$ 270,357	
	Dec-24 \$ 253,557	
	Jan-25 \$ 293,646	
	Feb-25 \$ 258,914	
	Mar-25 \$ 325,502	
	Apr-25 \$ 309,363	
	May-25 \$ 261,287	
<b>Total Physican/Professional Fees YTD May 2025</b>		<b>\$ 3,038,239</b>
<b>Total eligible costs YTD May 2025</b>		<b>\$ 4,517,545</b>
 Total Current Parcel Tax Account Balance		<b>\$ 1,020,448</b>
Amount transferred to Operations for Reimbursement of Eligible Expenses		<b>\$ 1,000,000</b>
Balance remaining in Parcel Tax account		<b>\$ 20,448</b>

## Bear Valley Community Healthcare District

FYE	6/30/2025	6/30/2024	6/30/2023	6/30/2022	6/30/2021	6/30/2020	6/30/2019	6/30/2018	6/30/2017	6/30/2016	6/30/2015	TOTAL \$
Professional/Physician Fees	\$3,038,237	\$ 2,926,324	\$ 2,074,903	\$ 1,916,641	\$ 1,963,846	\$ 2,049,493	\$ 2,090,419	\$ 2,014,551	\$ 1,781,433	\$ 1,610,759	\$ 1,179,308	\$ 22,645,914
RN Registry	\$1,086,580	\$ 1,403,667	\$ 1,205,970	\$ 2,050,356	\$ 722,670	\$ 8,250	\$ 136,350	\$ 16,028	\$ 50,825	\$ -	\$ 19,571	\$ 6,700,267
	\$4,124,817	\$ 4,329,991	\$ 3,280,873	\$ 3,966,997	\$ 2,686,516	\$ 2,057,743	\$ 2,226,769	\$ 2,030,579	\$ 1,832,258	\$ 1,610,759	\$ 1,198,879	\$ 29,346,181
Parcel Tax Receipts	\$1,168,032	\$ 1,207,117	\$ 1,206,350	\$ 1,203,846	\$ 1,204,097	\$ 1,202,054	\$ 1,205,240	\$ 1,179,384	\$ 1,205,628	\$ 1,184,306	\$ 1,182,941	\$ 13,148,995



## Local Agency Special Tax and Bond Accountability Act (SB 165)

Senate Bill 165, filed with the Secretary of State on September 19, 2000, enacted the Local Agency Special Tax and Bond Accountability Act. This Act requires that any local special tax/local bond measure subject to voter approval contain a statement indicating the specific purposes of the special tax, requires that the proceeds of the special tax be applied to those purposes, requires the creation of an account into which the proceeds shall be deposited, and requires an annual report containing specified information concerning the use of the proceeds. The Act applies to local bond measures adopted on or after January 1, 2001 in accordance with Section 50075.1 and Section 53410 of the California Government Code.

Some of the requirements of the Act are handled at the formation of the Special Tax District and others are handled through annual reports. This report intends to comply with Section 50075.3 and Section 53411 of the California Government Code that states:

“The chief fiscal officer of the issuing local agency shall file a report with its governing body no later than January 1, 2002, and at least once a year thereafter. The annual report shall contain all of the following:

- (a) The amount of funds collected and expended.
- (b) The status of any project required or authorized to be funded as identified in subdivision (a) of Section 50075.1 or Section 53410.”

The requirements of the Act apply to the Operating Fund for the following District:

### **Bear Valley Community Healthcare District**

#### **Purpose of Special Tax**

##### ***Maintaining Local Hospital and Emergency Healthcare Services Parcel Tax Measure***

To continue maintaining local access to life-saving emergency medical care at Bear Valley Community Hospital, keep hospital medical technology/equipment up-to-date, and ensure the hospital has enough qualified doctors and nurses.

#### **Fiscal Year June 30, 2025 Collections & Expenditures**

Fund	6/30/2024 Balance	Amount Collected	6/30/2025 Balance	Expended Amount	Actual Physician Expense	Actual RN Registry Expenses
<b>Parcel Tax</b>	<b>\$0</b>	<b>\$1,168,032</b>	<b>\$0</b>	<b>\$1,168,032</b>	<b>\$3,038,237</b>	<b>\$1,086,580</b>



Finance Report  
May 2025 Results

## Summary for May 2025

- Cash on hand \$ 3,022,375
- *Cash Collections* \$ 3,025,813
- Investments \$ 20,073,172
- Board Designated Funds \$ 25,000,000
- Days Cash on hand, including investments with LAIF – 406
- Operating **Loss** for the month of \$541,855 vs projected Loss of \$455,045
- Total **Surplus** of \$164,022 (vs a budgeted Surplus of \$240,956)
- Total Patient Revenue was 7.4% Lower than Budget for the month
- Revenue deductions were at 50.2 of total revenue (5.9% lower than budget-See narrative)
- Net Patient Revenue was 8.9% less than budget
- Total Expenses were 0.6% more than budget



## **May 2025 Financial Results**

### **Key Statistics**

Total Patient Days were less than budget (787 vs 855). Our Acute and Swing average daily census was 4.9. Emergency Room visits were below the monthly target (863 vs 938). Surgical procedures were also below the monthly target (10 vs 21). Primary care visits were above their target (2,198 vs 2,118) as were specialty clinic visits (292 vs 271). Both primary care and specialty clinic visits continue to exceed their year-to-date targets by 2,228 and 491 respectively. Lab procedures exceeded budget (7,433 vs 7,418) while Imaging was below its target (combined modalities of 1,282 vs 1,481) and only CT Scan procedures were above its monthly target by 10 procedures.

### **Financial Highlights**

Overall revenues for the month (\$5,492,128 vs \$5,933,272) were below the monthly target with inpatient revenue (by \$165,030), and Emergency Room (by \$433,934). Outpatient Revenue (by \$112,633), Clinic (by \$26,978) and Skilled Nursing (by \$18,210) exceeded their monthly revenue targets.

Total Revenue Deductions were 5.9% below budget for the month (50.2% of gross revenue. Days in accounts receivable decreased from 76.7 to 74.7 with cash collections of \$3,025,813. Bad debt reserves were slightly over budget (by \$7.5K). Denial write offs exceeded budget for the month (by \$89K). Administrative adjustments were \$1.5K more than projected. Charity Care cases were also high (\$50,583 vs \$16,198). Self-pay accounts receivable over 120 days old increased to 2.93 million.

The total accounts receivable over 120 days old increased to \$6,788 million or 42.4% of the total accounts receivable. Continued focus remains on the revenue cycle and collection process as there is a direct impact to our revenue deductions (increased bad debt, charity and denials) and cash flow.

Contractual allowances for the month were below target. Like last month, there was an additional reduction of contractual allowances in the amount of \$500,000 related to a portion of supplemental funding realized.

Total operating revenue exceeded the current month's target by \$203K.



Total Expenses exceeded the current month's target (by \$21K). The main areas of variance included Salaries and Benefits including registry (over by \$61K) Salaries (by \$72K) and benefits (by \$7K) exceeding budget and Registry (by \$18K) below its monthly target, Professional fees (Under by \$34K), Supplies (Under by \$4K), Utilities (Over by \$8K), Repairs and Maintenance (Under by \$11), Purchased Services (Under by \$36K), and Other Expenses (over by \$25K).

Salaries were over our budget projection (by \$72K) while Registry was under (\$52K vs \$70K). The total salaries, benefits and registry costs exceed budget for the year by \$93K with Salaries (by \$46K) and Benefits (by \$132K) under their targets and Registry costs exceeding its year-to-date target (by \$271K). Also, we have been able to spend \$439K less in Registry as compared to the same eleven-month period last year.

Purchased services \$19K in contract labor for our Skilled Nursing Facility, \$27K for transaction fees and \$9K for additional informational mailers.

Utilities continue to be higher due to additional usage due to higher electricity cost as rates increased from Bear Valley Electric.

Other expenses were over budget for the month (by \$25K) and included costs CNA education, Hospital month recognition and a claim settlement (\$51K).

Full Time Equivalent staffing (for BVCHD employed staff) was at 225.1 vs a current month target of 213.5. As a reminder, there are 12.1 ~~fte's~~ related to the "Mom and Dad's" Grant program included in our staffing calculations.

Other non-operating revenue for the month totaled \$705,877 and included county tax revenue (\$229,167), quality payments (\$500K) as well as some rental income, interest expense, rental income and miscellaneous other revenue (copy fees, etc.).

This combination led to a loss from Operations of \$541,855 as compared to an expected loss of \$455,045.

Our Total Surplus for the month was \$164,022 versus an expected surplus of \$240,956.

On a year-to-date basis, we have an overall surplus of \$107,460.

Our Operating Cash and Investments totaled \$48,095,547 with days of cash on hand of 406 and days in accounts receivable of 74.7.

Financial Statements April 2025

Financial Highlights—Hospital  
STATEMENT OF OPERATIONS

		A	B	C	D	E	F	G	H	I	J
			Current Month					Year-to-Date			
		FY 23/24	FY 24/25		VARIANCE		FY 23/24	FY 24/25		VARIANCE	
		Actual	Actual	Budget	Amount	%	Actual	Actual	Budget	Amount	%
1	Total patient revenue	5,984,596	5,492,128	5,933,272	(441,144)	-7.4%	64,058,449	65,385,458	67,046,915	(1,661,457)	-2.5%
2	Total revenue deductions	4,181,419	2,757,261	2,929,740	(172,479)	-5.9%	32,859,364	34,605,030	33,099,451	1,505,579	4.5%
3	% Deductions	70%	50%	49%			51%	53%	49%		
4	Net Patient Revenue	1,803,177	2,734,867	3,003,532	(268,665)	-8.9%	31,199,085	30,780,428	33,947,464	(3,167,036)	-9.3%
5	% Net to Gross	30%	50%	51%			49%	47%	51%		
6	Other Revenue	121,379	291,747	88,612	203,135	229.2%	994,572	1,455,000	971,596	483,404	49.8%
7	Total Operating Revenue	1,924,556	3,026,613	3,092,144	(65,531)	-2.1%	32,193,657	32,235,428	34,919,060	(2,683,632)	-7.7%
8	Total Expenses	3,376,834	3,568,468	3,547,189	21,280	0.6%	36,299,895	39,053,073	38,725,794	327,279	0.8%
9	% Expenses	56%	65%	60%			57%	60%	58%		
10	Surplus (Loss) from Operations	(1,452,278)	(541,855)	(455,045)	(86,810)	-19.1%	(4,106,238)	(6,817,644)	(3,806,734)	(3,010,910)	-79.1%
11	% Operating margin	-24%	-10%	-8%			-6%	-10%	-6%		
12	Total Non-operating	1,125,279	705,877	696,000	9,877	1.4%	5,457,724	6,925,104	7,656,004	(730,899)	-9.5%
13	Surplus/(Loss)	(326,998)	164,022	240,956	(76,934)	31.9%	1,351,486	107,460	3,849,270	(3,741,810)	97.2%
14	% Total margin	-5%	3%	4%			2%	0%	6%		

BALANCE SHEET

		A	B	C	D	E
		May	May	April	VARIANCE	
		FY 23/24	FY 24/25	FY 24/25	Amount	%
15	Gross Accounts Receivables	14,816,522	14,678,117	16,141,098	(1,462,981)	-9.1%
16	Net Accounts Receivables		4,872,153	5,684,709	(812,556)	-14.3%
17	% Net AR to Gross AR	0%	33%	35%		
18	Days Gross AR	75	74.7	76.7	(2.0)	-2.7%
19	Cash Collections	2,919,713	3,025,813	3,154,901	(129,088)	-4.1%
21	Investments and Board Designated Funds	44,779,428	45,073,172	44,573,172	500,000	1.1%
22	Cash on hand	2,360,502	3,022,375	3,083,076	(60,702)	-2.0%
23	Total Cash & Invest	47,139,930	48,095,547	47,656,248	439,298	0.9%
24	Days Cash & Invest	391.9	405.8	377.5	28	7.5%
	Total Cash and Investments	47,139,930	48,095,547	47,656,248		
	Increase Current Year vs. Prior Year		955,617			

Statement of Operations											
		A	B	C	D	E	F	G	H	I	J
		Current Month				Year-to-Date					
		FY 23/24	FY 24/25		VARIANCE		FY 23/24	FY 24/25		VARIANCE	
		Actual	Actual	Budget	Amount	%	Actual	Actual	Budget	Amount	%
Gross Patient Revenue											
1	Inpatient	519,274	466,857	631,887	(165,030)	-26.1%	5,163,086	5,608,798	6,396,989	(788,191)	-12.3%
2	Outpatient	1,162,361	1,146,028	1,033,395	112,633	10.9%	10,991,344	11,328,510	11,135,115	193,395	1.7%
3	Clinic Revenue	364,881	388,395	361,417	26,978	7.5%	3,355,492	3,938,874	3,408,621	530,253	15.6%
4	Emergency Room	3,516,705	3,041,600	3,475,534	(433,934)	-12.5%	39,980,837	40,107,557	41,450,438	(1,342,881)	-3.2%
5	Skilled Nursing Facility	449,248	431,038	431,038	18,210	4.2%	4,567,690	4,401,720	4,655,752	(254,032)	-5.5%
6	Total patient revenue	5,984,596	5,492,128	5,933,272	(441,144)	-7.4%	64,058,449	65,385,458	67,046,915	(1,661,457)	-2.5%
Revenue Deductions											
7	Contractual Allow	3,076,220	2,264,409	2,542,035	(277,625)	-10.9%	28,755,774	29,295,074	28,719,257	575,817	2.0%
8	Contractual Allow PY	-	-	-	-	#DIV/0!	-	-	-	-	#DIV/0!
9	Charity Care	25,247	50,583	16,198	34,385	212.3%	217,496	408,647	182,995	225,652	123.3%
10	Administrative	28,332	17,562	16,038	1,524	9.5%	77,268	444,509	181,195	263,314	145.3%
11	Policy Discount	15,833	9,522	23,839	(14,317)	-60.1%	143,562	133,503	269,326	(135,823)	-50.4%
12	Employee Discount	5,097	3,509	16,264	(12,755)	-78.4%	62,252	59,704	183,751	(124,047)	-67.5%
13	Bad Debts	963,945	244,299	236,747	7,552	3.2%	2,754,169	2,720,661	2,674,703	45,958	1.7%
14	Denials	104,327	167,377	78,620	88,757	112.9%	848,842	1,542,932	888,224	654,708	73.7%
15	Total revenue deductions	4,181,419	2,757,261	2,929,740	(172,479)	-5.9%	32,859,364	34,605,030	33,099,451	1,505,579	4.5%
16	Net Patient Revenue	1,803,177	2,734,867	3,003,532	(268,665)	-8.9%	31,199,085	30,780,428	33,947,464	(3,167,036)	-9.3%
	revenue including Prior Year adjustment	69.9%	50.2%	49.4%	0.8%		51.3%	52.9%	49.4%	3.6%	
										0.0%	
17	Other Revenue	121,379	291,747	88,612	203,135	229.2%	994,572	1,455,000	971,596	483,404	49.8%
18	Total Operating Revenue	1,924,556	3,026,613	3,092,144	(65,531)	-2.1%	32,193,657	32,235,428	34,919,060	(2,683,632)	-7.7%
Expenses											
19	Salaries	1,374,103	1,605,611	1,534,032	71,579	4.7%	14,520,860	16,505,421	16,551,808	(46,387)	-0.3%
20	Employee Benefits	577,374	529,523	522,909	6,614	1.3%	5,015,037	5,547,775	5,679,312	(131,537)	-2.3%
21	Registry	124,930	52,163	69,789	(17,626)	-25.3%	1,525,360	1,086,580	815,610	270,970	33.2%
22	Salaries and Benefits	2,076,407	2,187,297	2,126,730	60,567	2.8%	21,061,257	23,139,776	23,046,730	93,046	0.4%
23	Professional fees	256,066	261,287	295,618	(34,330)	-11.6%	2,671,634	3,038,237	3,168,203	(129,966)	-4.1%
24	Supplies	191,134	208,615	212,266	(3,651)	-1.7%	2,239,615	2,300,070	2,289,653	10,417	0.5%
25	Utilities	45,006	61,457	53,764	7,693	14.3%	585,590	644,224	651,244	(7,020)	-1.1%
26	Repairs and Maintenance	39,360	50,814	62,235	(11,421)	-18.4%	658,582	700,442	682,787	17,655	2.6%
27	Purchased Services	469,550	445,321	480,830	(35,509)	-7.4%	5,409,868	5,778,066	5,410,362	367,704	6.8%
28	Insurance	89,104	105,853	103,607	2,246	2.2%	1,045,067	1,174,060	1,139,677	34,383	3.0%
29	Depreciation	78,149	78,149	67,732	10,417	15.4%	937,789	859,639	745,052	114,587	15.4%
30	Rental and Leases	14,072	20,590	22,689	(2,099)	-9.3%	235,535	262,775	249,579	13,196	5.3%
32	Dues and Subscriptions	19,000	19,506	17,593	1,913	10.9%	204,809	223,287	192,881	30,406	15.8%
33	Other Expense.	98,986	129,580	104,125	25,455	24.4%	1,250,150	932,497	1,149,626	(217,129)	-18.9%
34	Total Expenses	3,376,834	3,568,468	3,547,189	21,280	0.6%	36,299,895	39,053,073	38,725,794	327,279	0.8%
35	Surplus (Loss) from Operations	(1,452,278)	(541,855)	(455,045)	(86,810)	-19.1%	(4,106,238)	(6,817,644)	(3,806,734)	(3,010,910)	-79.1%
36	Non-Operating Income										
37	Tax Revenue	215,833	229,167	229,167	0	0.0%	2,374,163	2,642,522	2,520,833	121,688	4.8%
38	Other non-operating	924,140	525,088	474,167	50,921	10.7%	1,667,079	2,995,443	3,865,833	(870,390)	-22.5%
	Interest Income	382	333	-	333	#DIV/0!	1,496,935	1,406,935	1,350,000	56,935	4.2%
	Interest Expense	(15,076)	(48,710)	(7,333)	(41,377)	564.3%	(80,012)	(119,795)	(80,663)	(39,132)	48.5%
	IGT Expense	-	-	-	-	#DIV/0!	-	-	-	-	#DIV/0!
39	Total Non-operating	1,125,279	705,877	696,000	9,877	1.4%	5,457,724	6,925,104	7,656,004	(730,899)	-9.5%
40	Surplus/(Loss)	(326,998)	164,022	240,956	(76,934)	31.9%	1,351,486	107,460	3,849,270	(3,741,810)	97.2%

Bear Valley Community Healthcare District Financial Statements														
Current Year Trending Statement of Operations														
A Statement of Operations—CURRENT YEAR 2025														8.8%
		1	2	3	4	5	6	7	8	9	10	11	12	
		July	Aug	Sept	Oct	Nov	Dec	Jan	Feb	Mar	Apr	May	June	YTD
Gross Patient Revenue														
1	Inpatient	548,673	501,640	286,439	474,566	545,975	579,035	672,645	445,001	587,809	500,157	466,857		5,608,798
2	Outpatient	1,036,654	1,029,143	969,447	1,132,094	945,399	883,837	995,030	1,001,722	971,145	1,218,011	1,146,028		11,328,510
3	Clinic	369,463	345,846	282,583	379,501	332,839	364,070	365,624	357,944	339,458	413,150	388,395		3,938,874
4	Emergency Room	4,069,032	3,609,764	2,777,653	2,950,438	3,033,121	4,389,623	4,532,984	3,972,969	4,315,383	3,414,989	3,041,600		40,107,557
5	Skilled Nursing Facility	411,287	380,194	360,864	434,209	406,891	381,820	383,810	357,084	404,145	432,167	449,248		4,401,720
6	Total patient revenue	6,435,109	5,866,588	4,676,986	5,370,808	5,264,225	6,598,385	6,950,094	6,134,720	6,617,941	5,978,474	5,492,128	-	65,385,458
Revenue Deductions		C/A	0.49	0.62	0.41	0.51	0.51	0.54	0.31	0.41	0.38	0.37	0.41	#DIV/0!
7	Contractual Allow	3,157,929	3,628,721	1,916,154	2,713,778	2,658,859	3,543,688	2,154,717	2,513,937	2,515,858	2,227,926	2,264,409		29,295,074
8	Contractual Allow PY	-												-
9	Charity Care	-	130,055	19,387	2,654	28,687	36,152	28,013	33,411	50,707	28,999	50,583		408,647
10	Administrative	136,547	30,025	28,806	93,848	10,251	11,430	1,804	593	60,851	52,790	17,562		444,509
11	Policy Discount	10,047	14,347	11,708	12,474	12,072	12,667	12,086	12,633	16,594	9,352	9,522		133,503
12	Employee Discount	7,983	7,545	3,795	6,646	6,142	7,526	2,309	7,474	1,699	5,077	3,509		59,704
13	Bad Debts	179,539	(189,644)	240,226	182,059	227,750	(1,897)	504,023	361,466	472,343	500,498	244,299		2,720,661
14	Denials	186,795	281,494	114,225	73,372	105,869	213,588	144,743	65,883	69,616	119,971	167,377		1,542,932
15	Total revenue deductions	3,677,939	3,902,543	2,334,302	3,084,830	3,049,629	3,823,154	2,847,695	2,995,397	3,187,668	2,944,612	2,757,261	-	34,605,030
16	Net Patient Revenue	2,757,170	1,964,045	2,342,684	2,285,978	2,214,596	2,775,232	4,102,399	3,139,323	3,430,273	3,033,862	2,734,867	-	30,780,428
	net / tot pat rev	42.8%	33.5%	50.1%	42.6%	42.1%	42.1%	59.0%	51.2%	51.8%	50.7%	49.8%	#DIV/0!	47.1%
17	Other Revenue	70,254	73,692	127,255	156,145	213,532	172,373	57,010	164,103	59,710	69,179	291,747		1,455,000
18	Total Operating Revenue	2,827,424	2,037,737	2,469,939	2,442,123	2,428,128	2,947,604	4,159,409	3,303,427	3,489,983	3,103,041	3,026,613	-	32,235,428
Expenses														
19	Salaries	1,201,654	1,668,615	1,255,689	1,526,254	1,427,622	1,583,253	1,486,264	1,493,626	1,665,436	1,591,396	1,605,611		16,505,421
20	Employee Benefits	385,921	582,963	470,237	486,211	467,412	499,616	542,389	505,290	551,017	527,196	529,523		5,547,775
21	Registry	99,973	119,575	93,966	107,449	97,509	126,527	137,842	85,073	80,668	85,836	52,163		1,086,580
22	Salaries and Benefits	1,687,547	2,371,153	1,819,892	2,119,913	1,992,543	2,209,396	2,166,496	2,083,989	2,297,122	2,204,428	2,187,297	-	23,139,776
23	Professional fees	234,004	300,107	257,745	273,757	270,357	253,557	293,646	258,914	325,502	309,363	261,287		3,038,237
24	Supplies	193,404	208,669	224,409	194,220	194,825	202,771	234,014	217,408	211,709	210,027	208,615		2,300,070
25	Utilities	62,144	46,153	58,555	52,093	53,955	59,623	55,653	66,474	58,861	69,257	61,457		644,224
26	Repairs and Maintenance	64,539	75,161	65,547	74,871	63,552	75,441	48,326	61,423	53,049	67,719	50,814		700,442
27	Purchased Services	424,771	399,488	490,040	466,708	463,935	475,399	617,686	882,198	584,674	527,846	445,321		5,778,066
28	Insurance	108,112	106,836	107,206	106,212	105,685	105,685	105,685	111,247	105,685	105,854	105,853		1,174,060
29	Depreciation	78,149	78,149	78,149	78,149	78,149	78,149	78,149	78,149	78,149	78,149	78,149		859,639
30	Rental and Leases	17,135	24,134	24,629	27,651	25,866	20,651	23,946	27,901	26,068	24,204	20,590		262,775
32	Dues and Subscriptions	20,633	20,467	16,363	13,440	24,250	16,450	21,414	21,160	20,097	29,508	19,506		223,287
33	Other Expense.	102,412	70,319	76,057	126,683	47,006	68,472	39,252	89,604	86,982	96,131	129,580		932,497
34	Total Expenses	2,992,850	3,700,637	3,218,590	3,533,697	3,320,120	3,565,594	3,684,267	3,898,467	3,847,896	3,722,486	3,568,468	-	39,053,073
35	Surplus (Loss) from Operations	(165,425)	(1,662,900)	(748,651)	(1,091,574)	(891,992)	(617,989)	475,141	(595,040)	(357,914)	(619,445)	(541,855)	-	(6,817,644)
36	Non-Operating Income													
37	Tax Revenue	350,855	229,167	229,167	229,167	229,167	229,167	229,167	229,167	229,167	229,167	229,167		2,642,522
38	Other non-operating	319,388	9,108	152,556	556,907	5,662	448,411	276,791	20,955	15,695	664,883	525,088		2,995,443
	Interest Income	772	211	484,545	618	407	447,476	1,061	319	464,814	6,377	333		1,406,935
	Interest Expense	(8,418)	(7,243)	(7,083)	(6,957)	(6,831)	(6,712)	(7,087)	(6,965)	(6,996)	(6,792)	(48,710)		(119,795)
	IGT Expense													-
39	Total Non-operating	662,597	231,243	859,185	779,734	228,405	1,118,341	499,932	243,476	702,680	893,634	705,877	-	6,925,104
40	Surplus/(Loss)	497,172	(1,431,657)	110,534	(311,840)	(663,587)	500,352	975,073	(351,564)	344,766	274,189	164,022	-	107,460

2024-2025 Actual BS												
BALANCE SHEET												
	July	Aug	Sept	Oct	Nov	Dec	Jan	Feb	Mar	Apr	May	
ASSETS:												
Current Assets												
Cash and Cash Equivalents (Includes CD's)	3,533,830	1,323,001	2,281,052	1,673,924	2,293,446	3,187,862	2,552,866	1,919,498	2,329,036	3,083,076	3,022,375	
Gross Patient Accounts Receivable	15,292,129	14,332,026	13,484,606	13,051,469	13,113,478	14,450,324	16,308,599	17,116,870	17,001,101	16,141,098	14,678,117	
Less: Reserves for Allowances & Bad Debt	10,438,332	9,896,190	9,217,063	8,787,091	8,662,431	9,519,921	10,200,193	10,675,128	10,703,467	10,456,389	9,805,964	
Net Patient Accounts Receivable	4,853,797	4,435,836	4,267,543	4,264,378	4,451,047	4,930,403	6,108,406	6,441,742	6,297,633	5,684,709	4,872,153	
Tax Revenue Receivable												
Other Receivables	542,125	602,584	565,558	368,577	2,955,502	2,945,966	-3,882,705	-4,840,487	-3,711,304	-4,321,727	-3,969,416	
Inventories	266,291	274,891	288,935	285,184	320,251	322,226	347,549	351,793	360,360	359,079	360,272	
Prepaid Expenses	1,307,868	1,245,576	1,160,868	1,155,960	1,019,379	970,327	884,497	792,371	643,684	587,326	496,140	
Due From Third Party Payers	0	0										
Due From Affiliates/Related Organizations	0	0										
Other Current Assets	2,750,000	2,749,865	2,748,665	2,748,665	2,385,588	1,105,533	1,037,349	1,053,164	881,547	-11,094	-151,751	
Total Current Assets	13,253,911	10,631,752	11,312,621	10,496,688	13,425,213	13,462,318	7,047,963	5,718,081	6,800,957	5,381,370	4,629,774	
Assets Whose Use is Limited												
Investments	40,888,786	40,888,786	40,373,142	15,373,142	11,673,142	12,120,270	18,370,270	18,370,270	17,010,270	19,573,172	20,073,172	
Board Designated Funds	0	0	0	25,000,000	25,000,000	25,000,000	25,000,000	25,000,000	25,000,000	25,000,000	25,000,000	
Other Limited Use Assets	133,608	133,608	133,608	133,608	133,608	133,608	133,608	133,608	133,608	133,608	133,608	
Total Limited Use Assets	41,022,394	41,022,394	40,506,750	40,506,750	36,806,750	37,253,878	43,503,878	43,503,878	42,143,878	44,706,780	45,206,780	
Property, Plant, and Equipment												
Land and Land Improvements	4,216,685	4,201,210	4,216,685	4,216,685	4,216,685	4,216,685	4,216,685	4,216,685	4,216,685	4,216,685	4,216,685	
Building and Building Improvements	9,618,188	9,618,188	9,683,371	9,683,371	9,784,775	9,784,775	9,784,775	9,784,775	9,799,520	9,807,328	9,808,079	
Equipment	15,815,379	18,418,736	18,526,451	18,746,342	18,713,685	18,824,492	18,808,694	18,994,548	19,027,118	19,244,698	19,341,945	
Construction In Progress	4,059,556	1,462,628	1,462,628	1,485,293	1,490,516	1,492,674	1,493,444	1,668,209	1,668,209	1,605,035	1,606,665	
Capitalized Interest												
Gross Property, Plant, and Equipment	33,709,808	33,700,763	33,889,135	34,131,690	34,205,661	34,318,626	34,303,598	34,664,216	34,711,532	34,873,746	34,973,373	
Less: Accumulated Depreciation	20,245,936	20,324,085	20,402,233	20,480,383	20,558,532	20,636,681	20,714,830	20,807,972	20,886,121	20,964,270	21,042,419	
Net Property, Plant, and Equipment	13,463,872	13,376,678	13,486,902	13,651,307	13,647,130	13,681,945	13,588,768	13,856,245	13,825,411	13,909,476	13,930,955	
TOTAL UNRESTRICTED ASSETS	67,740,176	65,030,823	65,306,273	64,654,745	63,879,093	64,398,140	64,140,610	63,078,203	62,770,246	63,997,626	63,767,508	
Restricted Assets	0	0	0	0	0	0	0	0	0	0	0	
TOTAL ASSETS	67,740,176	65,030,823	65,306,273	64,654,745	63,879,093	64,398,140	64,140,610	63,078,203	62,770,246	63,997,626	63,767,508	

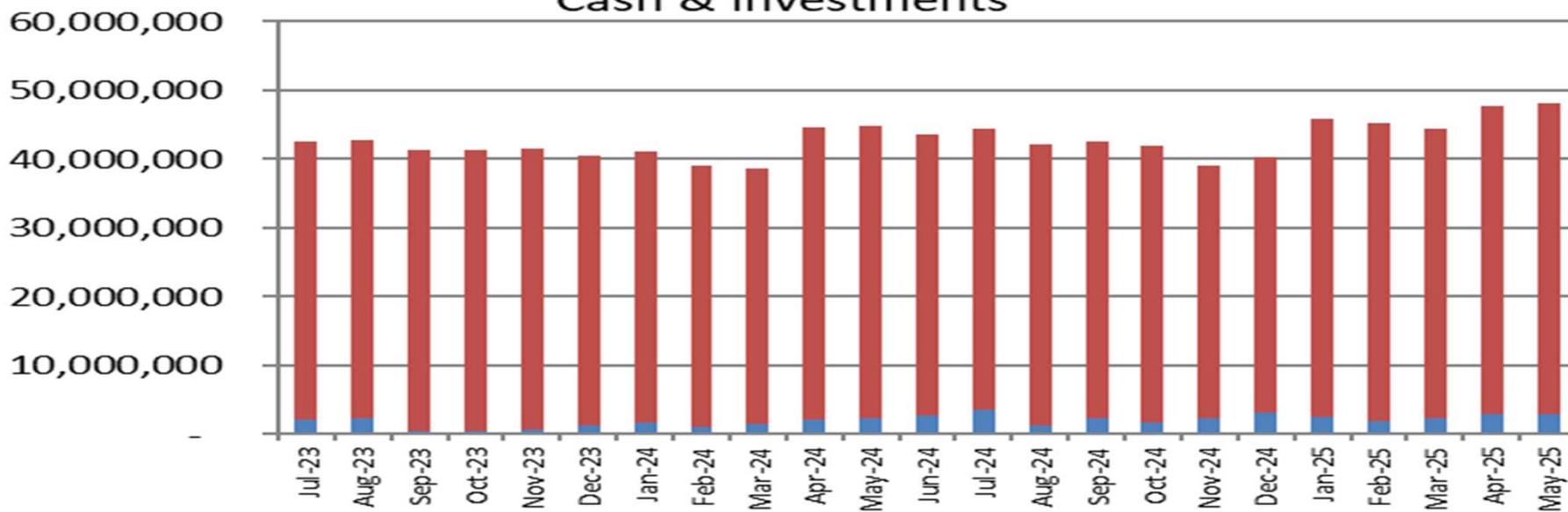
LIABILITIES:	0											
Current Liabilities												
Accounts Payable	1,829,377	784,840	1,107,722	773,316	833,809	831,708	566,115	1,055,656	671,043	1,129,695	742,956	
Notes and Loans Payable												
Accrued Payroll	1,157,795	838,342	810,564	1,080,382	1,204,792	1,437,371	791,087	833,871	1,033,660	1,201,460	1,400,687	
Patient Refunds Payable												
Due to Third Party Payers (Settlements)	3,698,698	3,703,206	3,707,714	3,733,422	3,737,930	3,742,733	3,461,225	1,297,088	1,296,450	1,604,413	1,606,667	
Advances From Third Party Payers												
Current Portion of Def Rev - Txs,	2,750,000	2,520,833	2,291,667	2,062,500	1,833,333	1,604,167	1,375,000	865,407	636,240	407,074	177,907	
Current Portion - LT Debt	45,000	45,000	45,000	45,000	45,000	45,000	45,000	45,000	45,000	45,000	45,000	
Current Portion of AB915												
Other Current Liabilities (Accrued Interest & Accrued Other	174,649	485,603	580,073	508,431	436,122	493,703	683,650	506,373	276,715	533,006	564,369	
Total Current Liabilities	9,655,519	8,377,823	8,542,739	8,203,051	8,090,985	8,154,681	6,922,077	4,603,395	3,959,108	4,920,648	4,537,586	
Long Term Debt												
USDA Loan												
Leases Payable	0	0	0	0	0	0	0	0	0	0	0	
Less: Current Portion Of Long Term Debt	-2,640,000	-2,640,000	-2,640,000	-2,640,000	-2,640,000	-2,595,000	-2,595,000	-2,595,000	-2,595,000	-2,595,000	-2,595,000	
Total Long Term Debt (Net of Current)	2,640,000	2,640,000	2,640,000	2,640,000	2,640,000	2,595,000	2,595,000	2,595,000	2,595,000	2,595,000	2,595,000	
Other Long Term Liabilities												
Deferred Revenue	0	0	0	0	0	0	0	0	0	0	0	
Other	0	0	0	0	0	0						
Total Other Long Term Liabilities	0	0	0	0	0	0	0	0	0	0	0	
TOTAL LIABILITIES	12,295,519	11,017,823	11,182,739	10,843,051	10,730,985	10,749,681	9,517,077	7,198,395	6,554,108	7,515,648	7,132,586	
Fund Balance												
Unrestricted Fund Balance	54,947,486	55,444,657	54,013,000	54,123,535	53,811,694	53,148,107	53,648,459	56,231,373	55,871,371	56,207,789	56,470,900	
Temporarily Restricted Fund Balance		0				0						
Equity Transfer from FRHG	0	0				0						
Net Revenue/(Expenses)	497,172	-1,431,657	110,534	-311,841	-663,587	500,352	975,073	-351,565	344,766	274,189	164,022	
TOTAL FUND BALANCE	55,444,658	54,013,000	54,123,534	53,811,694	53,148,107	53,648,459	54,623,532	55,879,808	56,216,137	56,481,978	56,634,922	
TOTAL LIABILITIES & FUND BALANCE	67,740,177	65,030,823	65,306,273	64,654,745	63,879,092	64,398,141	64,140,609	63,078,203	62,770,245	63,997,626	63,767,508	

Bear Valley Community	Fiscal Year	FYE 6-30-25									
AR by Financial Class	Jul-24	Aug-24	Sep-24	Oct-24	Nov-24	Dec-24	Jan-25	Feb-25	Mar-25	Apr-25	May-25
Medicare	2,334,095	2,121,815	1,456,030	1,760,244	1,294,456	1,526,822	1,857,610	1,851,655	2,163,467	1,971,989	1,632,625
Medicaid	3,266,485	3,655,865	3,789,232	3,648,700	3,777,193	4,699,166	4,472,864	4,750,317	4,671,421	4,300,195	3,823,163
Blue Cross	752,253	748,833	552,966	532,023	675,624	935,292	1,206,075	1,094,260	1,162,045	896,566	648,454
Commercial Insurance	4,884,202	4,567,247	3,989,337	3,767,042	4,220,533	4,567,463	5,319,338	5,753,987	5,319,898	4,915,371	4,674,591
Workers Compensation	0	0	0	0	0	0	0	0	0	0	0
Other Third Party	0	0	0	0	0	0	0	0	0	0	0
Self Pay	5,180,934	4,453,213	4,810,875	4,479,971	4,291,443	3,880,200	4,540,441	4,745,561	4,800,446	5,242,889	5,225,292
Subtotal	16,417,969	15,546,973	14,598,440	14,187,980	14,259,249	15,608,943	17,396,328	18,195,780	18,117,277	17,327,010	16,004,125
Less Credit Balances	(1,129,833)	(1,218,990)	(1,117,877)	(1,140,556)	(1,140,556)	(1,162,662)	(1,091,772)	(1,082,952)	(1,120,220)	(1,189,954)	(1,330,051)
Total AR including credit balances	15,288,136	14,327,983	13,480,563	13,047,424	13,118,693	14,446,281	16,304,556	17,112,828	16,997,057	16,137,056	14,674,074
AR by Age from Discharge											
0-30 Days	5,227,689	4,943,537	4,005,521	4,478,990	4,872,149	5,959,909	6,510,448	6,080,574	5,745,605	5,500,846	4,623,358
31-60 Days	2,279,818	2,205,243	2,032,036	1,447,679	1,788,029	2,023,938	2,928,918	3,323,416	2,773,790	2,588,029	2,438,991
61-90 Days	1,494,024	1,088,095	1,218,613	1,099,205	790,079	989,982	1,291,568	1,705,915	2,085,274	1,382,623	1,213,883
91-120 Days	999,117	1,119,044	803,066	937,770	781,620	586,430	752,100	1,107,088	1,330,931	1,378,414	940,212
121-180 Days	2,096,361	1,657,287	1,629,093	1,488,971	1,405,863	1,321,429	1,130,430	1,150,231	1,476,267	1,722,925	1,906,079
181-365 Days	4,320,959	4,533,767	4,910,110	4,735,367	4,621,509	4,727,255	4,782,864	4,828,556	4,705,410	4,754,173	4,881,602
Over 365 Days	0	0	0	0	0	0	0	0	0	0	0
Total	16,417,969	15,546,973	14,598,440	14,187,980	14,259,249	15,608,943	17,396,328	18,195,780	18,117,277	17,327,010	16,004,125
% Age from Discharge											
0-30 Days	31.8%	31.8%	27.4%	31.6%	34.2%	38.2%	37.4%	33.4%	31.7%	31.7%	28.9%
31-60 Days	13.9%	14.2%	13.9%	10.2%	12.5%	13.0%	16.8%	18.3%	15.3%	14.9%	15.2%
61-90 Days	9.1%	7.0%	8.3%	7.7%	5.5%	6.3%	7.4%	9.4%	11.5%	8.0%	7.6%
91-120 Days	6.1%	7.2%	5.5%	6.6%	5.5%	3.8%	4.3%	6.1%	7.3%	8.0%	5.9%
121-180 Days	12.8%	10.7%	11.2%	10.5%	9.9%	8.5%	6.5%	6.3%	8.1%	9.9%	11.9%
181-365 Days	26.3%	29.2%	33.6%	33.4%	32.4%	30.3%	27.5%	26.5%	26.0%	27.4%	30.5%
Over 365 Days	0.0%	0.0%	0.0%	0.0%	0.0%	0.0%	0.0%	0.0%	0.0%	0.0%	0.0%
Total	100.0%	100.0%	100.0%	100.0%	100.0%	100.0%	100.0%	100.0%	100.0%	100.0%	100.0%
Dollars Over 120 Days	6,417,320	6,191,054	6,539,203	6,224,338	6,027,372	6,048,684	5,913,294	5,978,787	6,181,677	6,477,098	6,787,681
Per Cent over 120 Days	39.1%	39.8%	44.8%	43.9%	42.3%	38.8%	34.0%	32.9%	34.1%	37.4%	42.4%
Average Daily Revenue - prior 3 mo	197,590	197,165	188,652	172,982	168,264	187,320	204,486	234,324	218,919	210,462	196,615
Avg days of Rev in AR - Gross (Net of CB)	77.4	72.7	71.5	75.4	78.0	77.1	79.7	73.0	77.6	76.7	74.6
Avg days of Rev in AR - Gross (No CB)	83.1	78.9	77.4	82.0	84.7	83.3	85.1	77.7	82.8	82.3	81.4

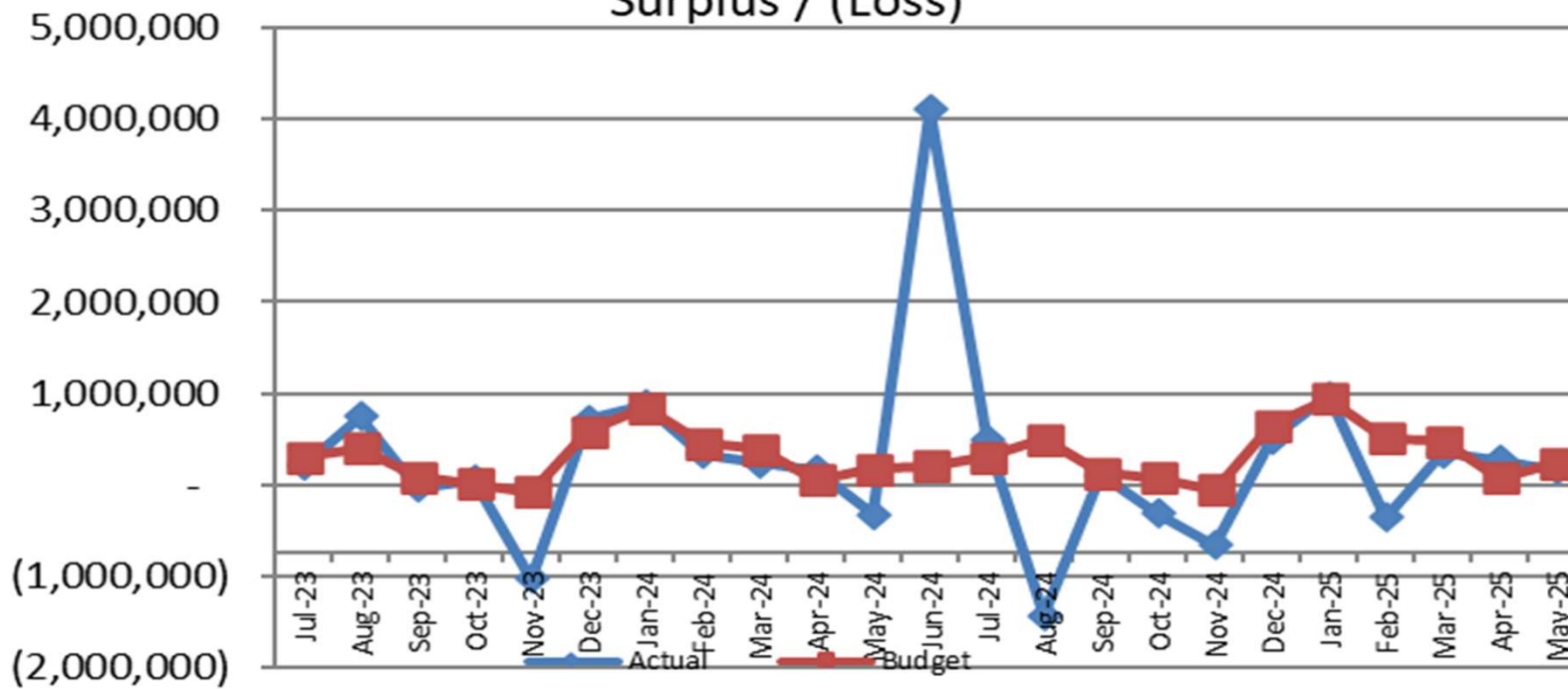
<div>Units of Service</div> <div>For the period ending May 2025</div>													
31		335											
Current Month						Bear Valley Community Hospital			Year-To-Date				
May-25		May-24	Actual	-Budget	Act.-Act.				May-25	May-24	Actual	-Budget	Act.-Act.
Actual	Budget	Actual	Variance	Var %	Var %				Actual	Budget	Actual	Variance	Var %
130	166	117	(36)	-21.5%	11.1%	Med Surg Patient Days			1311	1,536	1,033	(225)	-14.6%
23	78	40	(55)	-70.3%	-42.5%	Swing Patient Days			455	838	647	(383)	-45.7%
634	612	595	22	3.6%	6.6%	SNF Patient Days			6,294	6,535	6,554	(241)	-3.7%
787	855	752	(68)	-8.0%	4.7%	Total Patient Days			8,060	8,908	8,234	(848)	-9.5%
32	30	30	2	8.3%	6.7%	Acute Admissions			345	319	297	26	8.0%
27	29	28	(2)	-6.5%	-3.6%	Acute Discharges			338	312	289	26	8.3%
4.8	5.7	4.2	(1)	-16.0%	15.2%	Acute Average Length of Stay			3.9	4.9	3.6	(1)	-21.2%
0.7	2.5	1.3	(1.76)	-70.3%	-42.5%	Swing Average Daily Census			1.4	2.5	1.9	(1.1)	-45.7%
4.2	5.3	3.8	(1.15)	-21.5%	11.1%	Acute Average Daily Census			3.9	4.6	3.1	(0.7)	-14.6%
20.5	19.7	19.2	0.7	3.6%	6.6%	SNFAvg Daily Census			18.8	19.5	19.6	(0.7)	-3.7%
25.4	27.6	24.3	(2.2)	-8.0%	4.7%	Total Avg. Daily Census			24.1	26.6	24.6	(2.5)	-9.5%
56.4%	61.3%	53.9%	-5%	-8.0%	4.7%	% Occupancy			53.5%	59.1%	54.6%	-6%	-9.5%
31	20	27	11	55.4%	14.8%	Emergency Room Admitted			326	245	266	81	33.1%
832	918	937	(86)	-9.3%	-11.2%	Emergency Room Discharged			10,565	11,268	11,192	(703)	-6.2%
863	938	964	(75)	-7.9%	-10.5%	Emergency Room Total			10,891	11,513	11,458	(622)	-5.4%
28	30	31	(2)	-7.9%	-10.5%	ER visits per calendar day			33	34	34	(2)	-5.4%
96.9%	67.5%	90.0%	22%	32.8%	7.6%	% Admits from ER			94.5%	76.7%	89.6%	32%	41.2%
4	4	6	-	0.0%	-33.3%	Surgical Procedures I/P			34	46	44	(12)	-26.1%
6	17	12	(11)	-64.3%	-50.0%	Surgical Procedures O/P			133	195	133	(62)	-31.8%
10	21	18	(11)	-51.9%	-44.4%	TOTAL Procedures			167	241	177	(74)	-30.7%
658	1,231	1,345	(573)	-46.5%	-51.1%	Surgical/Anes Minutes Total			9,763	13,305	12,435	(3,542)	-26.6%

Units of Service For the period ending May 2025													
Current Month						Bear Valley Community Hospital				Year-To-Date			
May-25		May-24	Actual	-Budget	Act.-Act.			May-25		May-24	Actual	-Budget	Act.-Act.
Actual	Budget	Actual	Variance	Var %	Var %			Actual	Budget	Actual	Variance	Var %	Var %
7,433	7,418	7,182	15	0.2%	3.5%		Lab Procedures	75,925	73,063	72,109	2,862	3.9%	5.3%
669	842	809	(173)	-20.5%	-17.3%		X-Ray Procedures	8,999	9,730	9,660	(731)	-7.5%	-6.8%
403	393	487	10	2.5%	-17.2%		C.T. Scan Procedures	5,232	5,034	4,952	198	3.9%	5.7%
172	189	135	(17)	-9.0%	27.4%		Ultrasound Procedures	1,837	1,790	1,750	47	2.6%	5.0%
38	57	70	(19)	-33.7%	-45.7%		Mammography Procedures	506	620	598	(114)	-18.3%	-15.4%
308	335	335	(27)	-8.1%	-8.1%		EKG Procedures	3,451	3,400	3,400	51	1.5%	1.5%
105	119	113	(14)	-11.8%	-7.1%		Respiratory Procedures	1,251	1,308	1,265	(57)	-4.4%	-1.1%
3,004	2,596	3,179	408	15.7%	-5.5%		Physical Therapy Procedures	27,022	26,849	27,545	173	0.6%	-1.9%
2,198	2,118	1,792	80	3.8%	22.7%		Primary Care Clinic Visits	22,249	20,021	16,728	2,228	11.1%	33.0%
292	271	296	21	7.7%	-1.4%		Specialty Clinic Visits	3,261	2,770	2,953	491	17.7%	10.4%
2,490	2,389	2,088	101	4.2%	19.3%		Clinic	25,510	22,791	19,681	2,719	11.9%	29.6%
80	77	67	3	4.2%	19.3%		Clinic visits per work day	76	68	59	8	11.9%	29.6%
16.0%	15.00%	15.10%	1.00%	6.67%	5.96%		% Medicare Revenue	14.38%	15.00%	14.11%	-0.62%	-4.12%	1.93%
48.30%	37.00%	43.90%	11.30%	30.54%	10.02%		% Medi-Cal Revenue	42.72%	37.00%	39.64%	5.72%	15.45%	7.78%
33.50%	43.00%	37.80%	-9.50%	-22.09%	-11.38%		% Insurance Revenue	39.41%	43.00%	42.56%	-3.59%	-8.35%	-7.41%
2.10%	3.50%	3.20%	-1.40%	-40.00%	-34.38%		% Self-Pay Revenue	3.48%	3.50%	3.95%	-0.02%	-0.52%	-11.95%
203.1	192.2	186.7	11.0	5.7%	8.8%		Productive FTE's	191.1	192.2	180.5	(1.1)	-0.6%	5.9%
225.1	213.5	209.2	11.6	5.5%	7.6%		Total FTE's	214.6	213.5	205.5	1.1	0.5%	4.5%

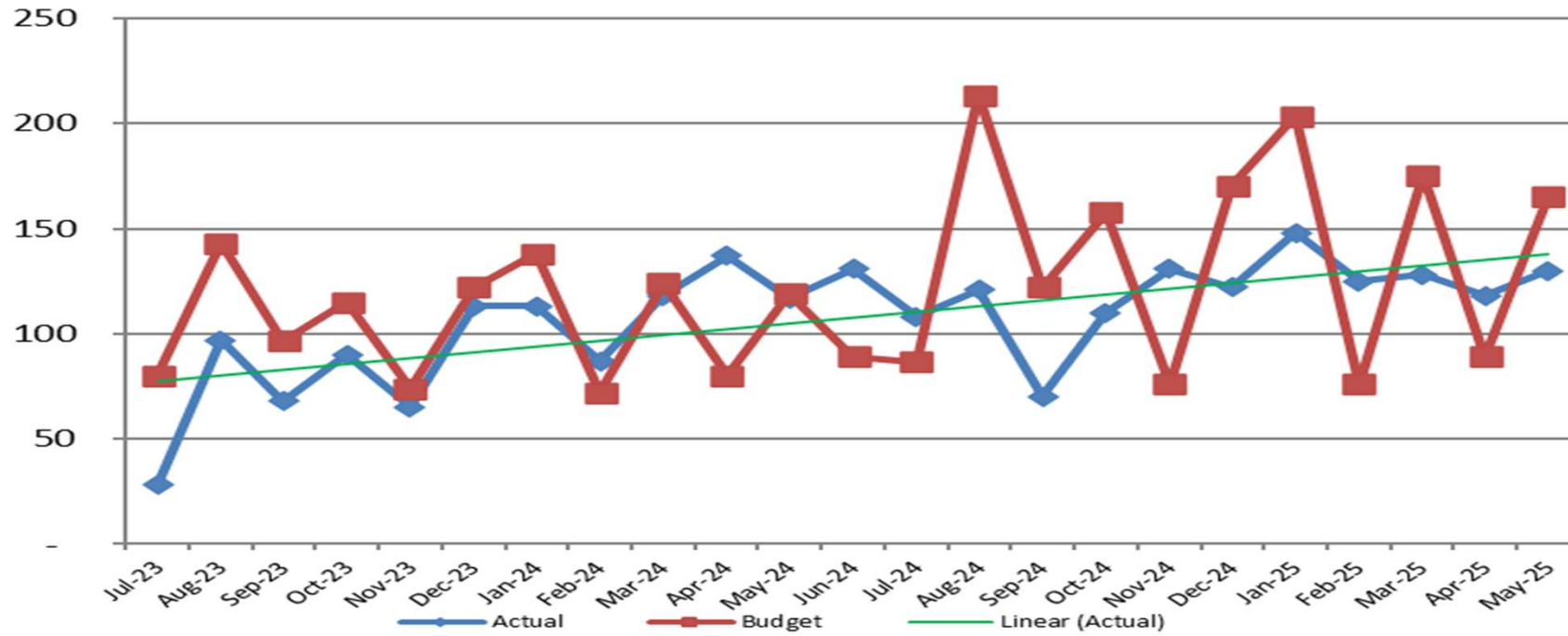
### Cash & Investments



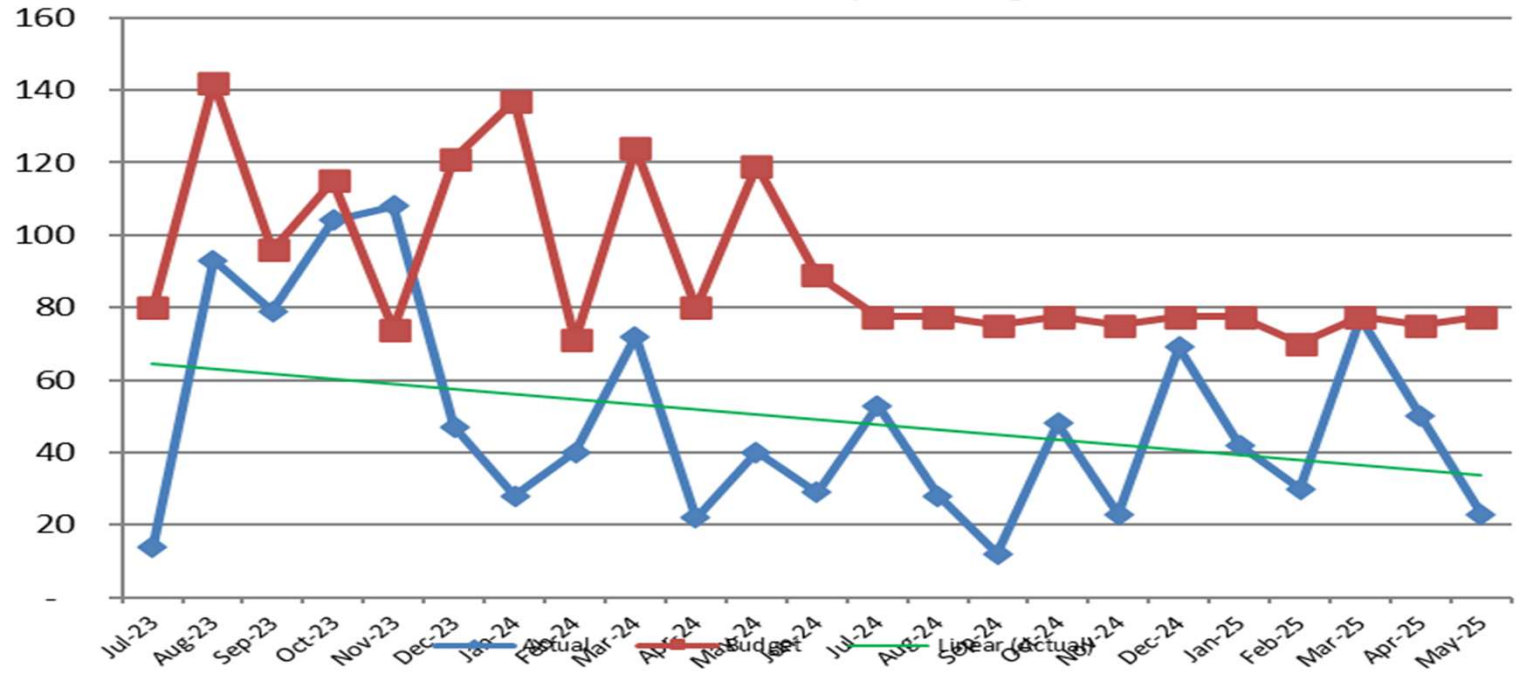
### Surplus / (Loss)



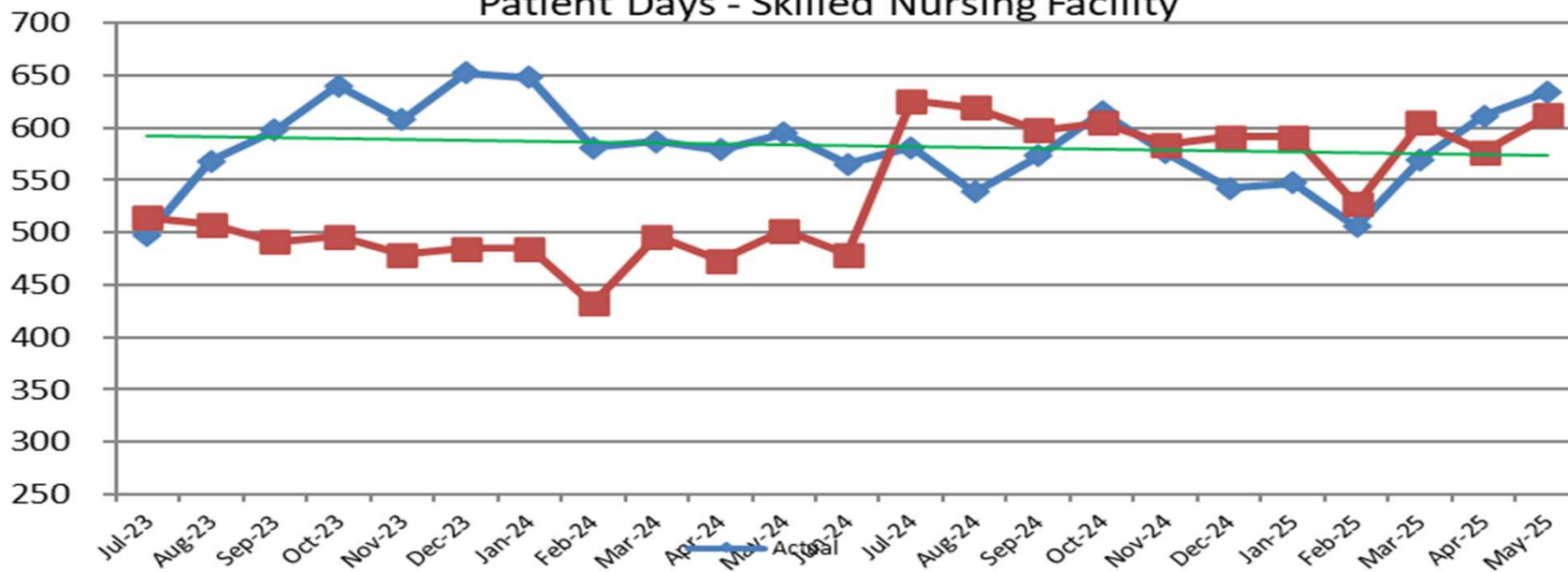
### Patient Days - Acute



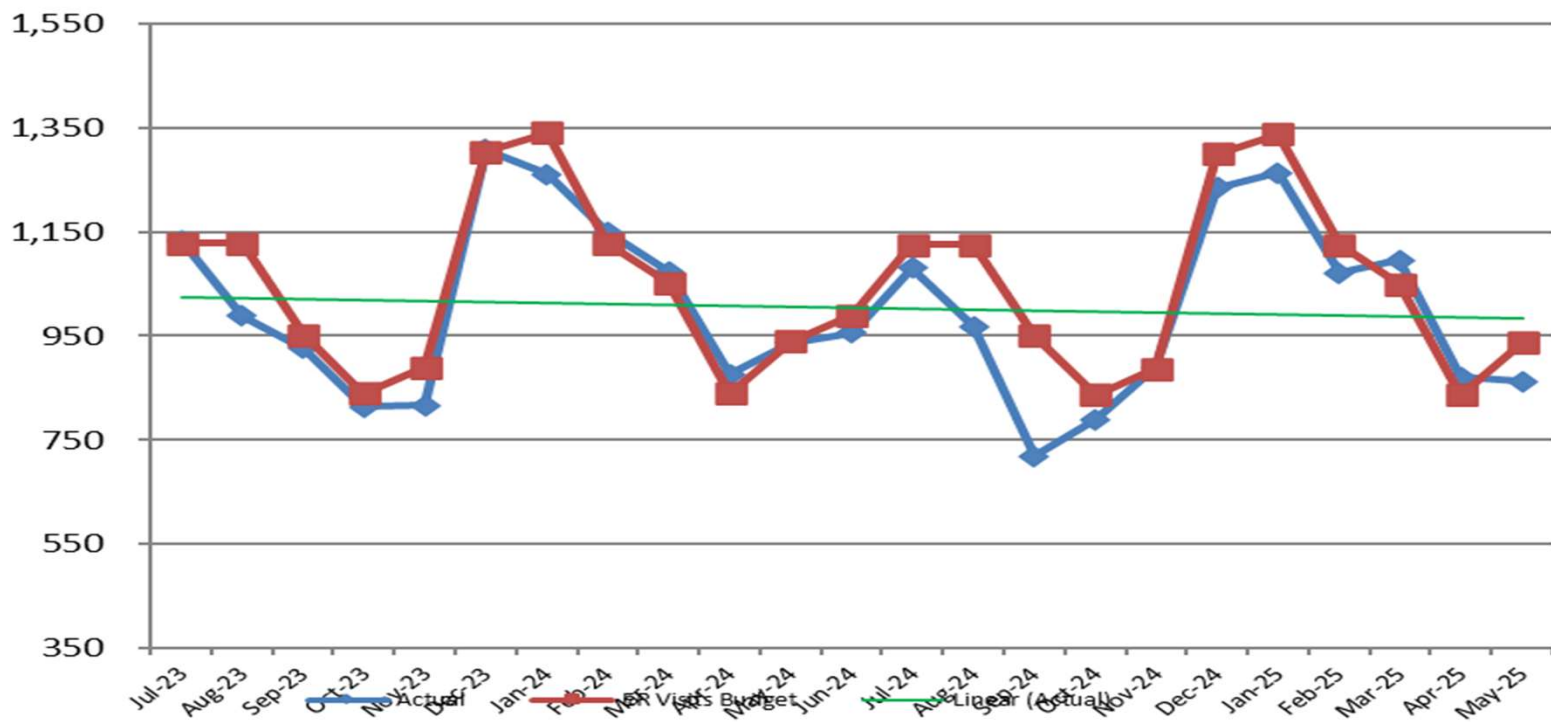
### Patient Days - Swing



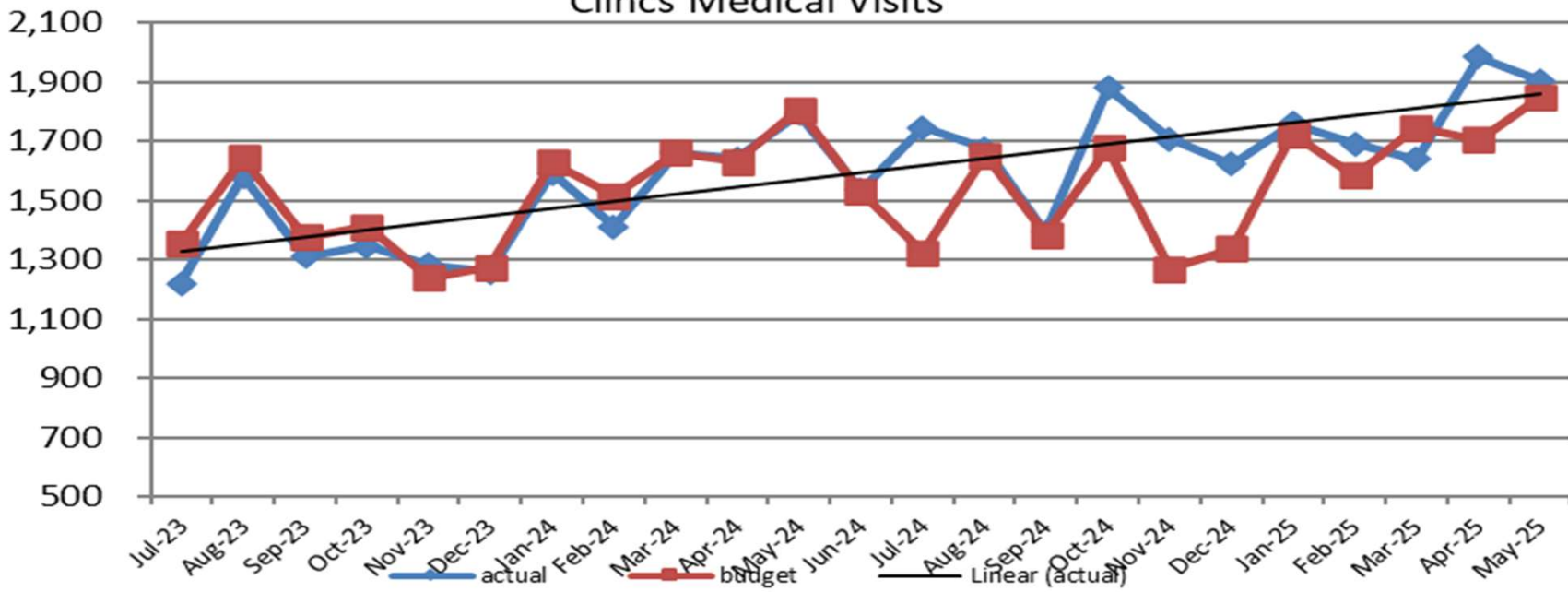
### Patient Days - Skilled Nursing Facility



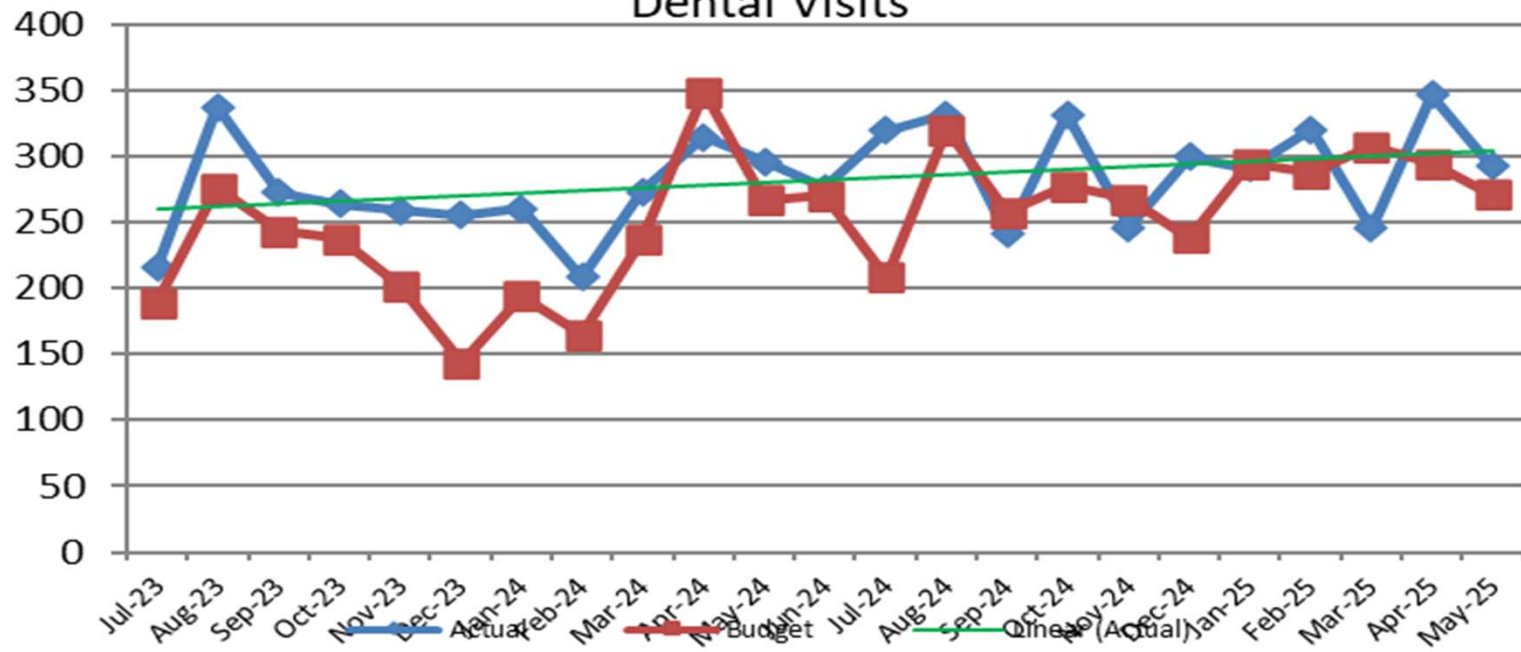
### Emergency Room Visits



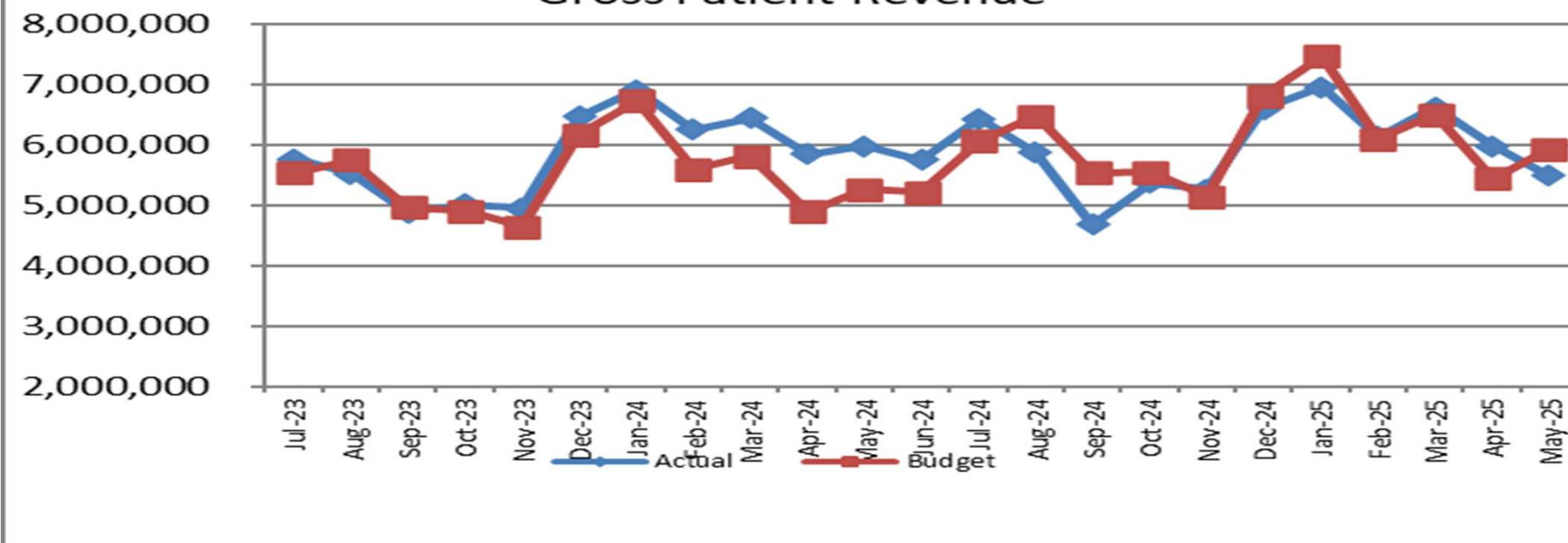
### Clincs Medical Visits



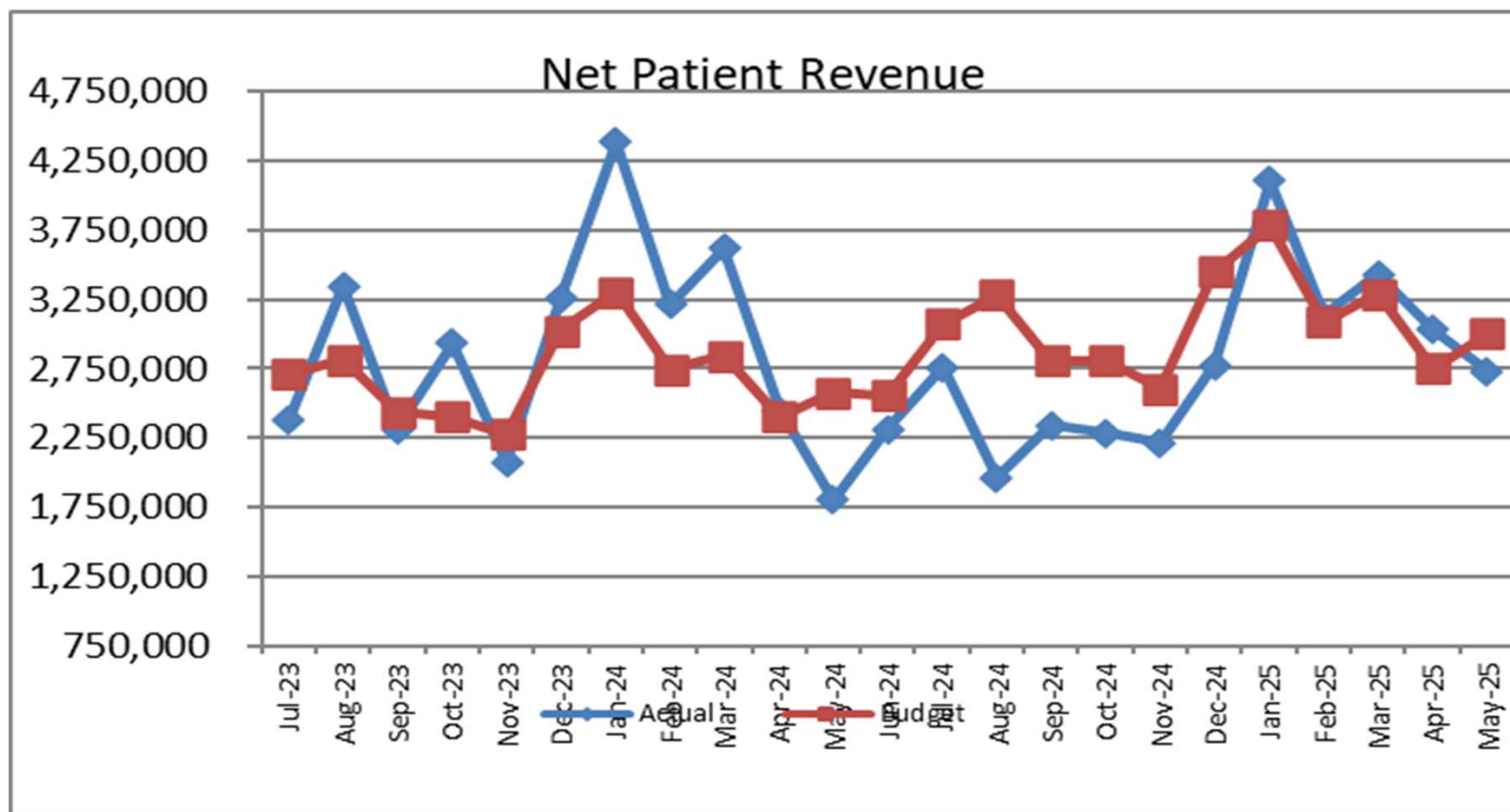
### Dental Visits



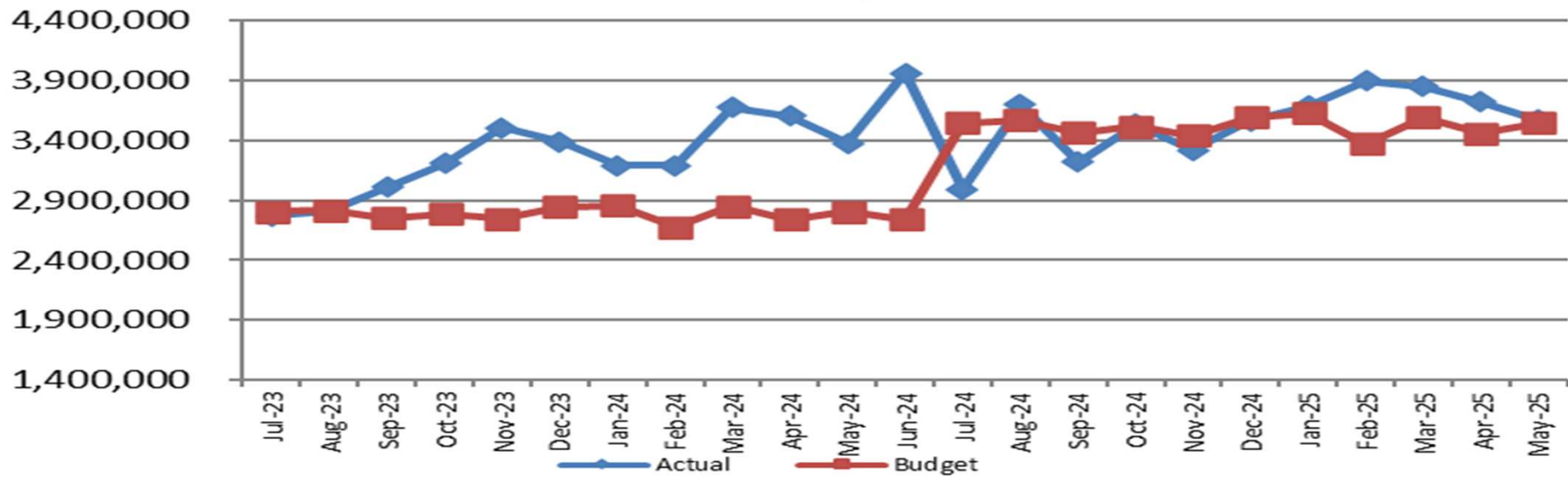
### Gross Patient Revenue



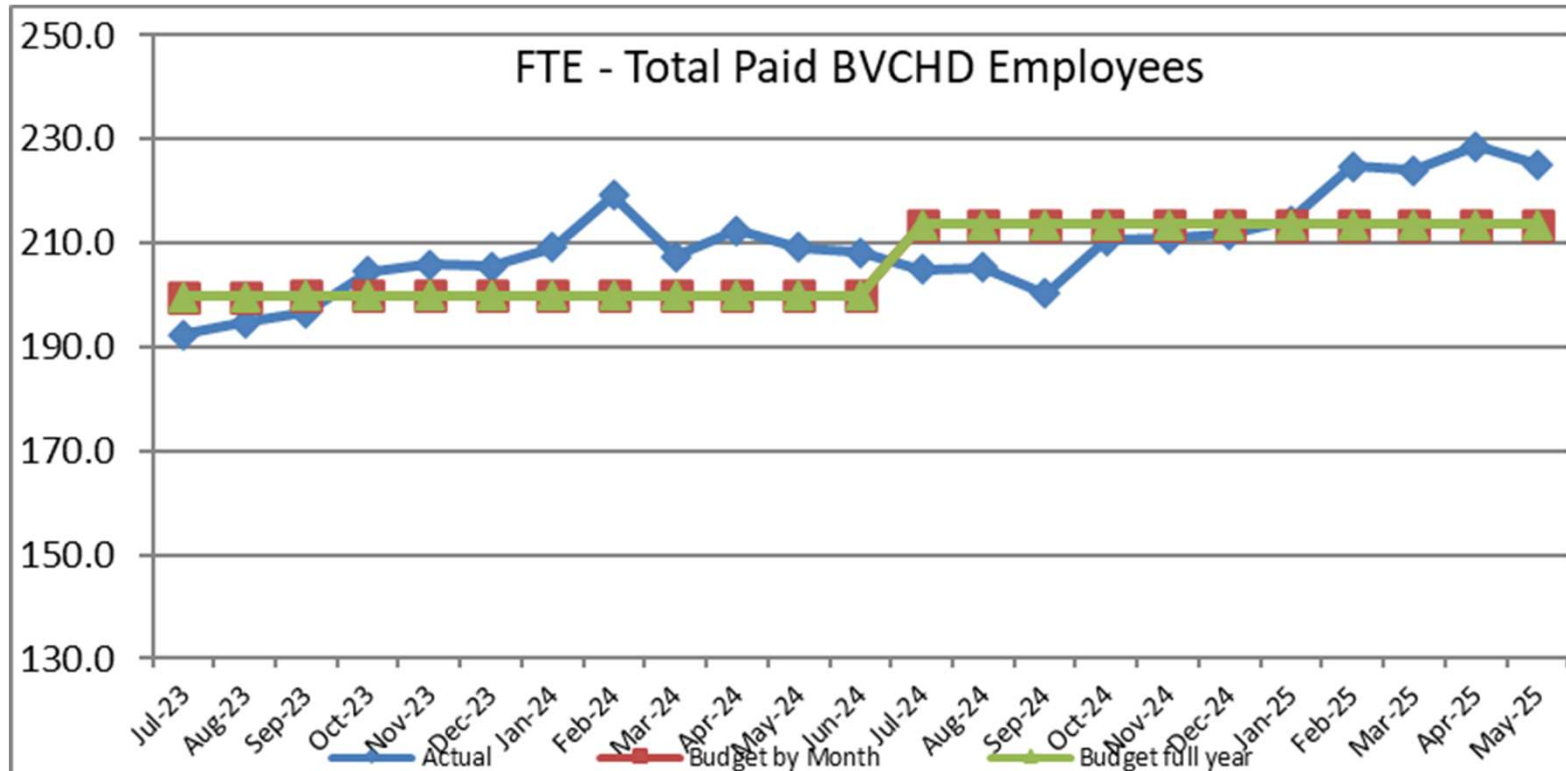
### Net Patient Revenue



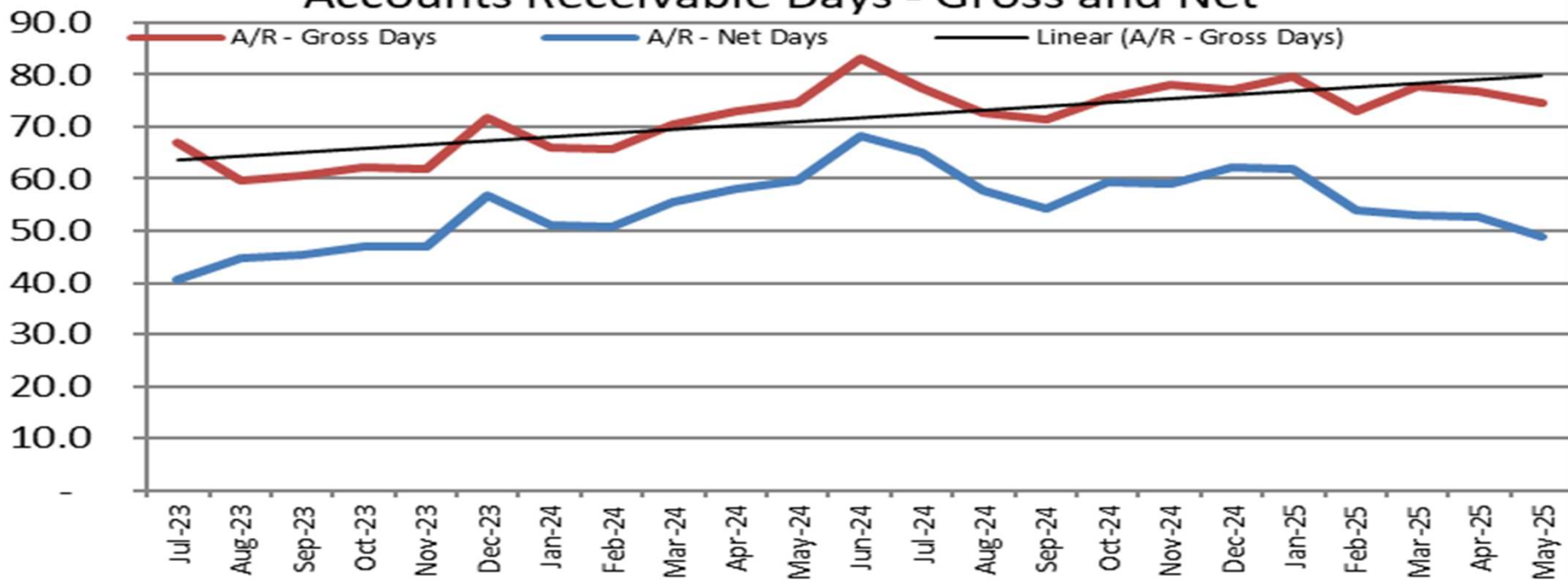
### Total Expenses



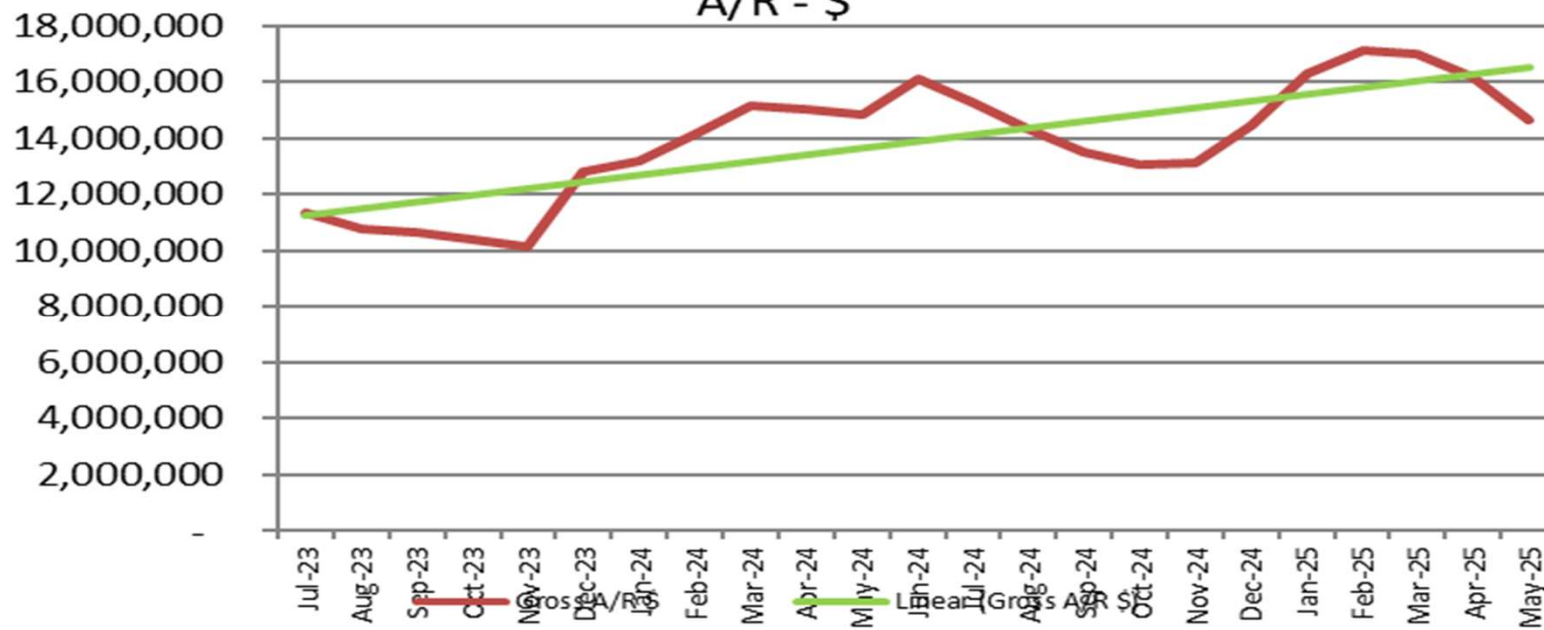
### FTE - Total Paid BVCHD Employees



## Accounts Receivable Days - Gross and Net



## A/R - \$



8

RUN DATE:06/12/25  
TIME:11:51

BEAR VALLEY COMMUNITY  
CHECK REGISTER  
05/01/25 THRU 05/31/25

PAGE 1  
GLCKREG

BANK--CHECK-----

CODE	NUMBER	DATE	AMOUNT	PAYEE
-----				
FMB	*	116440	05/29/25	16,706.10CR GATEWAY ACCEPTANCE CO.
FMB	*	116575	05/13/25	1,076.70CR DWP CITY OF BIG BEAR LAKE
FMB	*	116602	05/15/25	77.58CR LITTLE GREEN HOUSE FLORIST
FMB		116765	05/01/25	100.00 NICOLE HALPIN
FMB		116766	05/01/25	2,667.94 ALCON VISION, LLC
FMB		116767	05/01/25	2,640.61 AMAZON CAPITAL SERVICES, INC
FMB		116768	05/01/25	1,250.00 ANDY WERKING
FMB		116769	05/01/25	1,179.75 ARTHREX, INC
FMB		116770	05/01/25	150.00 ASHE
FMB		116771	05/01/25	508.61 AT&T MOBILITY LLC
FMB		116772	05/01/25	107.76 AWARDS NETWORK
FMB		116773	05/01/25	433.11 BEAR VALLEY ELECTRIC
FMB		116774	05/01/25	125.48 BECKMAN COULTER INC
FMB		116775	05/01/25	2,100.82 BRACCO DIAGNOSTICS INC
FMB		116776	05/01/25	642.00 C&D TERMITE & PEST CONTROL
FMB		116777	05/01/25	180.00 CALIF TELEHEALTH NETWORK
FMB		116778	05/01/25	1,909.86 CALIF TOOL & WELDING SUPPLY
FMB		116779	05/01/25	1,125.00 CAW DBA VTECH
FMB		116780	05/01/25	842.24 CHARTER COMMUNICATIONS HOLDING
FMB		116781	05/01/25	2,224.92 CLIMATEC, LLC
FMB		116782	05/01/25	52.99 COUNTY OF SAN BERNARDINO
FMB		116783	05/01/25	1,340.00 COUTS HEATING & COOLING INC
FMB		116784	05/01/25	1,892.09 CPSI/EVIDENT
FMB		116785	05/01/25	206.63 CT COACHWORKS, LLC
FMB		116786	05/01/25	2,500.00 CYRANO SYSTEMS, LLC
FMB		116787	05/01/25	175.35 ECOLAB
FMB		116788	05/01/25	1,721.44 ENV SERVICES, INC
FMB		116789	05/01/25	8,559.42 FISHER HEALTHCARE
FMB		116790	05/01/25	2,291.98 FRONTIER COMMUNICATIONS
FMB		116791	05/01/25	9,475.71 GATEWAY ACCEPTANCE CO.
FMB		116792	05/01/25	75.00 GNXCOR USA INC
FMB		116793	05/01/25	61.88 HEATHER LOOSE
FMB		116794	05/01/25	1,710.28 INTERFACE REHAB, INC.
FMB		116795	05/01/25	1,177.88 J AND J PRODUCE CO
FMB		116796	05/01/25	1,496.08 JENNIFER RICHARDS
FMB		116797	05/01/25	1,689.93 KONICA MINOLTA
FMB		116798	05/01/25	4,315.00 LIFESTREAM
FMB		116799	05/01/25	6,741.00 MARSH & MCLENNAN AGENCY LLC
FMB		116800	05/01/25	248.63 MATTHEW BATHGATE
FMB		116801	05/01/25	.00 VOIDED
FMB		116802	05/01/25	2,881.20 MEDLINE INDUSTRIES INC
FMB		116803	05/01/25	4,727.76 MEDPRO WASTE DISPOSAL, LLC.
FMB		116804	05/01/25	4,599.00 MURRAYS SALOON AND EATERY
FMB		116805	05/01/25	1,002.96 NICOLE WARD
FMB		116806	05/01/25	14,924.24 PAUL F STEMMER MD
FMB		116807	05/01/25	381.11 REBEKAH BRENDEN
FMB		116808	05/01/25	1,023.00 ROBERT BLAKE RENNIE
FMB		116809	05/01/25	3,750.00 RYAN A ZAMAN
FMB		116810	05/01/25	945.00 SAN BERNARDINO CNTY FIRE DISTR
FMB		116811	05/01/25	639.09 SIEMENS HEALTHCARE DIAGNOSTICS

RUN DATE:06/12/25  
TIME:11:51

BEAR VALLEY COMMUNITY  
CHECK REGISTER  
05/01/25 THRU 05/31/25

PAGE 2  
GLCKREG

BANK--CHECK-----

CODE	NUMBER	DATE	AMOUNT	PAYEE
FMB	116812	05/01/25	400.00	SISTER MY SISTER BAKE SHOP
FMB	116813	05/01/25	496.01	SMILEMAKERS
FMB	116814	05/01/25	53.24	SOUTH COAST AIR QUALITY MGMT
FMB	116815	05/01/25	3,528.08	STAPLES ADVANTAGE
FMB	116816	05/01/25	7,324.35	SYSMEX AMERICA, INC.
FMB	116817	05/01/25	676.65	TEAMSTERS LOCAL 1932
FMB	116818	05/01/25	393.10	TRI ANIM HEALTH SERVICES INC
FMB	116819	05/01/25	8,202.51	TRI RAD INC
FMB	116820	05/01/25	507.48	UNITED NURSES ASSOCIATION
FMB	116821	05/01/25	77.29	UNITED PARCEL SERVICE
FMB	116822	05/01/25	3,297.07	US FOOD SERVICE INC
FMB	116823	05/01/25	3,413.77	US IMPLANT SOLUTIONS, LLC
FMB	116824	05/01/25	954.00	WELLSKY CORP
FMB *	116825	05/01/25	8,762.00	ZOHO CORPORATION
FMB	116827	05/08/25	2,138.65	ANTHEM BLUE CROSS
FMB	116828	05/08/25	2,541.88	ANTHEM BLUE CROSS
FMB	116829	05/08/25	597.59	BLUE SHIELD PROMISE HEA
FMB	116830	05/08/25	4,458.82	OVERPAYMENT RECOVERY
FMB	116831	05/08/25	60.00	SANDOVAL RAMON
FMB	116832	05/08/25	1,652.59	AGILITI HEALTH, INC.
FMB	116833	05/08/25	1,500.00	AHMED EL-BERSHAWI
FMB	116834	05/08/25	4,834.10	AMAZON CAPITAL SERVICES, INC
FMB	116835	05/08/25	419.74	AMERISOURCEBERGEN
FMB	116836	05/08/25	192.80	AUTOZONE STORES, LLC
FMB	116837	05/08/25	150.00	BELLA NATALIE CERVATES
FMB	116838	05/08/25	203.35	BIG BEAR CITY CSD
FMB	116839	05/08/25	14,120.00	BIG BEAR FAMILY MEDICINE, INC
FMB	116840	05/08/25	1,854.50	BIG BEAR GRIZZLY
FMB	116841	05/08/25	99.16	BIG BEAR PAINT CENTER INC
FMB	116842	05/08/25	907.30	BIO RAD LABORATORIES, INC.
FMB	116843	05/08/25	1,172.77	BREWD COFFEE SYSTEMS
FMB	116844	05/08/25	1,062.98	BUTCHERS BLOCK
FMB	116845	05/08/25	113.00	CALIF DEPT OF PUBLIC HEALTH
FMB	116846	05/08/25	180.00	CALIF TELEHEALTH NETWORK
FMB	116847	05/08/25	3,770.00	CALVIN PRAMANN, DC
FMB	116848	05/08/25	1,312.20	CARDINAL HEALTH
FMB	116849	05/08/25	4,200.00	CARY STEWART MD INC
FMB	116850	05/08/25	440.29	CASCO MANUFACTURING SOLUTIONS,
FMB	116851	05/08/25	357.63	CHARTER COMMUNICATIONS HOLDING
FMB	116852	05/08/25	1,750.00	CHEROKEE CHEMICAL CO., INC
FMB	116853	05/08/25	2,000.00	CLINICIANS TELEMED MED GROUP
FMB	116854	05/08/25	55.76	COUNTY OF SAN BERNARDINO
FMB	116855	05/08/25	117.13	CRYSTAL GALLEGOS
FMB	116856	05/08/25	38,750.00	D CRITEL NURSING ANESTH INC
FMB	116857	05/08/25	15,200.00	DAVID HORNER PC
FMB	116858	05/08/25	1,204.76	DIY HOME CENTER
FMB	116859	05/08/25	1,125.00	DR ERIC A. SAIDI
FMB	116860	05/08/25	1,133.85	DWP CITY OF BIG BEAR LAKE
FMB	116861	05/08/25	6,500.00	EL DORADO BROADCASTERS LLC
FMB	116862	05/08/25	17,500.00	ELEVATE EMERGENCY MEDICINE
FMB	116863	05/08/25	6,895.57	EMERALD TEXTILES

RUN DATE:06/12/25  
TIME:11:51

BEAR VALLEY COMMUNITY  
CHECK REGISTER  
05/01/25 THRU 05/31/25

PAGE 3  
GLCKREG

BANK--CHECK-----

CODE	NUMBER	DATE	AMOUNT	PAYEE
FMB	116864	05/08/25	7,795.05	EMPLOYMENT DEVELOPMENT DEPT
FMB	116865	05/08/25	111.75	ERIN WILSON
FMB	116866	05/08/25	45.00	EVAN RAYNER
FMB	116867	05/08/25	1,068.00	EXTRA SPACE MANAGEMENT INC
FMB	116868	05/08/25	13,089.17	FISHER HEALTHCARE
FMB	116869	05/08/25	1,917.10	FRESENIUS KABI LLC
FMB	116870	05/08/25	10,671.30	GATEWAY ACCEPTANCE CO.
FMB	116871	05/08/25	1,907.21	GEIGER SUPPLY
FMB	116872	05/08/25	135.26	GLOBALSTAR USA
FMB	116873	05/08/25	489.00	GOLDEN STATE STORAGE
FMB	116874	05/08/25	1,033.23	GRAINGER PARTS
FMB	116875	05/08/25	12,610.00	HABEN PROF. CHIROPRACTIC CORP.
FMB	116876	05/08/25	9,515.63	HEARTWORKS, INC
FMB	116877	05/08/25	2,000.00	HIGH DESERT PATHOLOGY MDCL GRP
FMB	116878	05/08/25	500.00	HUMAN MEDICAL BILLING
FMB	116879	05/08/25	2,026.49	INDEED, INC.
FMB	116880	05/08/25	20.00	INNOVATIVE CREDIT SOLUTIONS
FMB	116881	05/08/25	1,324.95	IPITOMY COMMUNICATIONS LLC
FMB	116882	05/08/25	37,867.50	IRIS TELEHEALTH MEDICAL GROUP
FMB	116883	05/08/25	585.00	JAMES SKOEN
FMB	116884	05/08/25	208.60	JEFFREY ORR
FMB	116885	05/08/25	1,300.00	JESSICA NEMETH
FMB	116886	05/08/25	45.00	JIM SCHLENKER
FMB	116887	05/08/25	2,900.00	JUANA PAEZ
FMB	116888	05/08/25	332.00	JULIE VELASCO
FMB	116889	05/08/25	1,422.00	KBHR FM
FMB	116890	05/08/25	1,221.89	KERRI JEX
FMB	116891	05/08/25	1,036.74	LEILANEE LOBRES
FMB	116892	05/08/25	54,655.70	LIONAKIS
FMB	116893	05/08/25	596.00	LUDECKES ELECTRIC SVC INC
FMB	116894	05/08/25	20,728.98	MEDLINE INDUSTRIES INC
FMB	116895	05/08/25	4,727.76	MEDPRO WASTE DISPOSAL, LLC.
FMB	116896	05/08/25	1,500.00	MICHAEL S CHIN, MD, INC
FMB	116897	05/08/25	800.00	MOONRIDGE COFFEE COMPANY
FMB	116898	05/08/25	348.48	MOONRIDGE FUEL
FMB	116899	05/08/25	595.00	NATHAN MCCLUSKY
FMB	116900	05/08/25	2,555.00	NAVE LAW OFFICE, PC
FMB	116901	05/08/25	1,193.00	ODYSSEY POWER CORPORATION
FMB	116902	05/08/25	354.48	OLYMPUS AMERICA INC.
FMB	116903	05/08/25	410.85	PETTY CASH - TRACY LEWIS
FMB	116904	05/08/25	2,024.92	PRIMO BRANDS
FMB	116905	05/08/25	243.00	PTS COMMUNICATIONS
FMB	116906	05/08/25	1,200.00	QUADIENT FINANCE USA, INC
FMB	116907	05/08/25	6,270.00	RAM HEALTHCARE CONSULTING GROU
FMB	116908	05/08/25	2,668.00	RED PLANET PROMO
FMB	116909	05/08/25	150.00	ROSHAN T MELVANI MD INC
FMB	116910	05/08/25	3,897.13	SOFTSCRIPT INC
FMB	116911	05/08/25	21,833.00	SOL RADIOLOGY INC
FMB	116912	05/08/25	2,000.00	SONORA CANTINA
FMB	116913	05/08/25	167.47	SOUTH COAST AIR QUALITY MGMT
FMB	116914	05/08/25	1,136.39	STERICYCLE INC

RUN DATE:06/12/25  
TIME:11:51

BEAR VALLEY COMMUNITY  
CHECK REGISTER  
05/01/25 THRU 05/31/25

PAGE 4  
GLCKREG

BANK--CHECK-----			
CODE	NUMBER	DATE	PAYEE
FMB	116915	05/08/25	STEVEN G MIHAYLO BBHS
FMB	116916	05/08/25	STEVEN MICHAEL KNAPIK
FMB	116917	05/08/25	SYSCO RIVERSIDE INC
FMB	116918	05/08/25	T-SYSTEM, INC
FMB	116919	05/08/25	TELE CONNECT THERAPIES
FMB	116920	05/08/25	TRYSPARROW.COM INC
FMB	116921	05/08/25	UNITED PARCEL SERVICE
FMB	116922	05/08/25	US FOOD SERVICE INC
FMB	116923	05/08/25	V. MADHU ANVEKAR MD, INC.
FMB	116924	05/08/25	VISA
FMB	116925	05/08/25	WAGeworks, INC.
FMB	116926	05/08/25	WALLGUARD.COM
FMB	116927	05/08/25	WESTFAX, INC
FMB *	116928	05/08/25	WILLIAM CANNATA, MD
FMB	116930	05/09/25	SPORTS MED & ORTHOPAEDIC INST
FMB	116931	05/15/25	ANTHEM BLUE CROSS
FMB	116932	05/15/25	ANTHEM BLUE CROSS
FMB	116933	05/15/25	ABBOTT LABORATORIES
FMB	116934	05/15/25	ADP SCREENING AND SELECTION SE
FMB	116935	05/15/25	AMERICAN HEART ASSOC. INC.
FMB	116936	05/15/25	ANDY MEADORS BRANDING, INC
FMB	116937	05/15/25	BATTERY MART
FMB	116938	05/15/25	BB HOTEL LLC
FMB	116939	05/15/25	BEAR VALLEY ELECTRIC
FMB	116940	05/15/25	BIG BEAR CITY CSD
FMB	116941	05/15/25	BIG BEAR DISPOSAL
FMB	116942	05/15/25	CALIF TOOL & WELDING SUPPLY
FMB	116943	05/15/25	CENTER FOR ORAL HEALTH
FMB	116944	05/15/25	CHARTER COMMUNICATIONS HOLDING
FMB	116945	05/15/25	CINTAS COPORATION NO.2
FMB	116946	05/15/25	CLIMATEC, LLC
FMB	116947	05/15/25	CPSI/EVIDENT
FMB	116948	05/15/25	DANA ANDREWS
FMB	116949	05/15/25	DWP CITY OF BIG BEAR LAKE
FMB	116950	05/15/25	ECOLAB
FMB	116951	05/15/25	EXPERIAN HEALTH, INC
FMB	116952	05/15/25	FIELDMAN, ROLAPP & ASSOCIATES
FMB	116953	05/15/25	FISHER HEALTHCARE
FMB	116954	05/15/25	FRANK PIROLO
FMB	116955	05/15/25	GATEWAY ACCEPTANCE CO.
FMB	116956	05/15/25	GLOBO LANGUAGE SOLUTIONS LLC
FMB	116957	05/15/25	I2I POPULATION HEALTH
FMB	116958	05/15/25	INFLUENCE MARKETING SERVICES
FMB	116959	05/15/25	INMAR RX SOLUTIONS, INC
FMB	116960	05/15/25	J AND J PRODUCE CO
FMB	116961	05/15/25	KONICA MINOLTA BUSINESS SOL
FMB	116962	05/15/25	LA SIERRA FIRE EQUIPMENT, INC
FMB	116963	05/15/25	LABORATORY CORP OF AMERICA
FMB	116964	05/15/25	LITTLE GREEN HOUSE FLORIST
FMB	116965	05/15/25	MATHESON TRI GAS INC.
FMB	116966	05/15/25	MCNEIL, TROPP & BRAUN, LLP

RUN DATE:06/12/25  
TIME:11:51

BEAR VALLEY COMMUNITY  
CHECK REGISTER  
05/01/25 THRU 05/31/25

PAGE 5  
GLCKREG

BANK--CHECK-----			
CODE	NUMBER	DATE	AMOUNT PAYEE
FMB	116967	05/15/25	38,497.43 MEDELY, INC.
FMB	116968	05/15/25	3,750.00 MEDICAL DISPATCH
FMB	116969	05/15/25	8,663.85 MEDLINE INDUSTRIES INC
FMB	116970	05/15/25	1,400.00 MINDCARE SOLUTIONS GROUP, INC
FMB	116971	05/15/25	3,596.88 MINDRAY DS USA INC
FMB	116972	05/15/25	29.75 MOUNTAIN WATER CO
FMB	116973	05/15/25	4,525.50 MURRAYS SALOON AND EATERY
FMB	116974	05/15/25	1,129.22 NANOSONICS, INC
FMB	116975	05/15/25	660.59 NOVA BIOMEDICAL CORP
FMB	116976	05/15/25	2,615.21 OLYMPUS AMERICA INC.
FMB	116977	05/15/25	18,490.99 ORTHO-CLINICAL DIAGNOSTICS INC
FMB	116978	05/15/25	49.69 PRIMO BRANDS
FMB	116979	05/15/25	91,012.85 QHR HEALTH, LLC
FMB	116980	05/15/25	2,562.50 RED PLANET PROMO
FMB	116981	05/15/25	1,200.00 REJUVENATE AESTHETICS
FMB	116982	05/15/25	320.00 ROTARY CLUB OF BIG BEAR LAKE
FMB	116983	05/15/25	4,090.88 SOFTSCRIPT INC
FMB	116984	05/15/25	1,500.00 STANLEY K MATHIS, DPM, INC.
FMB	116985	05/15/25	194.29 TAVOCA INC
FMB	116986	05/15/25	750.54 TEAMSTERS LOCAL 1932
FMB	116987	05/15/25	1,000.00 THE BIG BEAR THEATRE PROJECT
FMB	116988	05/15/25	487.08 UNITED NURSES ASSOCIATION
FMB	116989	05/15/25	4,040.00 US IMPLANT SOLUTIONS, LLC
FMB	116990	05/15/25	304.50 V. MONTOYA ENTERPRISE INC.
FMB	116991	05/15/25	265.48 WATER AND SANITATION DIVISION
FMB	116992	05/15/25	706.36 WAXIE SANITARY SUPPLY
FMB	116993	05/15/25	1,000.00 WILLIAM A. GIAMARINO
FMB *	116994	05/15/25	1,689.95 ZONES INC
FMB	116996	05/22/25	50.00 REDDING ADRIENE
FMB	116997	05/22/25	3,348.98 AFLAC
FMB	116998	05/22/25	9,053.23 AGILITI HEALTH, INC.
FMB	116999	05/22/25	287.93 AIRGAS USA,LLC
FMB	117000	05/22/25	420.75 ALBERTSONS SAFEWAY
FMB	117001	05/22/25	354.01 ALIMED INC
FMB	117002	05/22/25	2,847.67 AMAZON CAPITAL SERVICES, INC
FMB	117003	05/22/25	94.67 AMERISOURCEBERGEN
FMB	117004	05/22/25	620.00 BELLA NATALIE CERVATES
FMB	117005	05/22/25	25,879.75 BETA HEALTHCARE GROUP
FMB	117006	05/22/25	.00 BUSINESS & BREWS LLC
FMB	117007	05/22/25	211,467.09 CALPERS1486578418
FMB	117008	05/22/25	8,460.78 CAREFUSION SOLUTIONS LLC
FMB	117009	05/22/25	248.00 CLIA LABORATORY PROGRAM
FMB	117010	05/22/25	192,726.65 CPSI/EVIDENT
FMB	117011	05/22/25	808.13 CUSTOMER PAYMENT SOLUTIONS
FMB	117012	05/22/25	11,606.63 DELTA DENTAL OF CA
FMB	117013	05/22/25	93.75 DIRECT SUPPLY HEALTHCARE EQUIP
FMB	117014	05/22/25	7,470.20 EMERALD TEXTILES
FMB	117015	05/22/25	81.20 ERIN WILSON
FMB	117016	05/22/25	1,035.00 FIELDMAN, ROLAPP & ASSOCIATES
FMB	117017	05/22/25	13,898.45 FISHER HEALTHCARE
FMB	117018	05/22/25	12,495.33 GATEWAY ACCEPTANCE CO.

RUN DATE:06/12/25  
TIME:11:51

BEAR VALLEY COMMUNITY  
CHECK REGISTER  
05/01/25 THRU 05/31/25

PAGE 6  
GLCKREG

BANK--CHECK-----			
CODE	NUMBER	DATE	PAYEE
FMB	117019	05/22/25	INSTRUMENTATION LABORATORY
FMB	117020	05/22/25	IRON MOUNTAIN INC
FMB	117021	05/22/25	JAMBOOR MEDICAL CORP
FMB	117022	05/22/25	JESSICA RULE
FMB	117023	05/22/25	LEASING ASSOC. BARRINGTON, INC
FMB	117024	05/22/25	LUCERNE VALLEY FIREWORKS
FMB	117025	05/22/25	MARCELLE LUNA
FMB	117026	05/22/25	MARKETLAB, INC
FMB	117027	05/22/25	MCKALLEN MEDICAL
FMB	117028	05/22/25	MEDLINE INDUSTRIES INC
FMB	117029	05/22/25	MIZUHO ORTHOPEDIC SYSTEMS, INC
FMB	117030	05/22/25	PERFORMANCE HEALTH SUPPLY INC.
FMB	117031	05/22/25	QUADIENT FINANCE USA, INC
FMB	117032	05/22/25	RADWORKS LLC
FMB	117033	05/22/25	RAM HEALTHCARE CONSULTING GROU
FMB	117034	05/22/25	RED PLANET PROMO
FMB	117035	05/22/25	RELIAS LLC
FMB	117036	05/22/25	SMILEMAKERS
FMB	117037	05/22/25	SPECTRA LABORATORIES, INC.
FMB	117038	05/22/25	STAPLES ADVANTAGE
FMB	117039	05/22/25	SYSCO RIVERSIDE INC
FMB	117040	05/22/25	THE FARNSWORTH GROUP, LTD
FMB	117041	05/22/25	TRI ANIM HEALTH SERVICES INC
FMB	117042	05/22/25	UNITED PARCEL SERVICE
FMB	117043	05/22/25	UNUM LIFE INS CO OF AMERICA
FMB	117044	05/22/25	US FOOD SERVICE INC
FMB	117045	05/22/25	WELLSKY CORP
FMB *	117046	05/22/25	WIPFLI CPA & CONSULTANTS
FMB	117048	05/29/25	AMAZON CAPITAL SERVICES, INC
FMB	117049	05/29/25	ANDY MEADORS BRANDING, INC
FMB	117050	05/29/25	ARTHREX, INC
FMB	117051	05/29/25	AT&T MOBILITY LLC
FMB	117052	05/29/25	BEAR VALLEY ELECTRIC
FMB	117053	05/29/25	BEAR VALLEY PRINTING
FMB	117054	05/29/25	BECKMAN COULTER INC
FMB	117055	05/29/25	BIO RAD LABORATORIES, INC.
FMB	117056	05/29/25	BRACCO DIAGNOSTICS INC
FMB	117057	05/29/25	BUSINESS & BREWS LLC
FMB	117058	05/29/25	C&D TERMITE & PEST CONTROL
FMB	117059	05/29/25	CANON MEDICAL SYSTEMS USA, INC
FMB	117060	05/29/25	CARDINAL HEALTH
FMB	117061	05/29/25	CHEROKEE CHEMICAL CO., INC
FMB	117062	05/29/25	CLIFFORD MOSS
FMB	117063	05/29/25	COUNTY OF SAN BERNARDINO
FMB	117064	05/29/25	CYRANO SYSTEMS, LLC
FMB	117065	05/29/25	DEPT OF JUSTICE
FMB	117066	05/29/25	DULUTH HOLDING, INC.
FMB	117067	05/29/25	EAGLE ANALYTICAL SERVICES, INC
FMB	117068	05/29/25	FIRST-CITIZENS BANK & TRUST CO
FMB	117069	05/29/25	FISHER HEALTHCARE
FMB	117070	05/29/25	FRESENIUS KABI LLC

RUN DATE:06/12/25  
TIME:11:51

BEAR VALLEY COMMUNITY  
CHECK REGISTER  
05/01/25 THRU 05/31/25

PAGE 7  
GLCKREG

BANK--CHECK-----

CODE	NUMBER	DATE	AMOUNT	PAYEE
FMB	117071	05/29/25	2,500.48	FRONTIER COMMUNICATIONS
FMB	117072	05/29/25	27,345.50	GATEWAY ACCEPTANCE CO.
FMB	117073	05/29/25	2,160.00	GORDON EQUIPMENT SERVICES
FMB	117074	05/29/25	356.18	HEALTH CARE LOGISTICS
FMB	117075	05/29/25	75.00	INNOVATIVE CREDIT SOLUTIONS
FMB	117076	05/29/25	396.23	J AND J PRODUCE CO
FMB	117077	05/29/25	1,200.00	JAMBOOR MEDICAL CORP
FMB	117078	05/29/25	447.17	JENNIFER RICHARDS
FMB	117079	05/29/25	299.06	LA SIERRA FIRE EQUIPMENT, INC
FMB	117080	05/29/25	626.04	LISA BARQUIN
FMB	117081	05/29/25	49.99	MARCELLE LUNA
FMB	117082	05/29/25	650.00	MARY NORMAN
FMB	117083	05/29/25	17,389.66	MEDELY, INC.
FMB	117084	05/29/25	10,534.07	MEDLINE INDUSTRIES INC
FMB	117085	05/29/25	71.55	PRIMO BRANDS
FMB	117086	05/29/25	3,317.50	RUTAN & TUCKER, LLP
FMB	117087	05/29/25	609.75	SIEMENS HEALTHCARE DIAGNOSTICS
FMB	117088	05/29/25	9,369.41	SOUTHWEST GAS CORPORATION
FMB	117089	05/29/25	3,588.68	STALCUP LANDSCAPE INNOVATIONS
FMB	117090	05/29/25	1,034.07	STERICYCLE INC
FMB	117091	05/29/25	5,684.47	SYSCO RIVERSIDE INC
FMB	117092	05/29/25	5,887.02	SYSMEX AMERICA, INC.
FMB	117093	05/29/25	673.90	TEAMSTERS LOCAL 1932
FMB	117094	05/29/25	255.65	TRONEX INTERNATIONAL, INC
FMB	117095	05/29/25	1,647.23	ULINE
FMB	117096	05/29/25	478.85	UNITED NURSES ASSOCIATION
FMB	117097	05/29/25	96.26	UNITED PARCEL SERVICE
FMB	117098	05/29/25	6,473.46	US FOOD SERVICE INC
FMB	117099	05/29/25	599.40	VERIFY COMPLY
TOTALS:			2,020,057.78	